



Cross-border lifestyles? Daily Mobility in the Trinational Metropolis of Basel

A challenge for sustainable development?



Dr. Yann Dubois

Urban Sociology Lab
EPFL, Switzerland

Basel, 15th September 2017



Plan

■ Introduction

- Borders in the spotlight
- Political and territorial stakes
- Scientific goals and research design

■ Main results

- Daily life in the cross-border metropolis of Basel
- Impacts of the national border : major challenges for the trinational metropolis of Basel

■ Conclusion



Borders in the spotlight

- **Trend towards a «defunctionalisation» for decades**
- **Borders in the spotlight again?**
 - Closure of borders
 - Migrants crisis (since 2010-2015)
 - Questioning of free-trade
 - Donald Trump's program (since 2016-2017)
 - Demonstrations against free-trade agreements (CETA, TAFTA,...) (among others: 2016-2017)
 - Fears about free-movement of persons
 - Brexit (June 2016)
 - Votation in Switzerland against mass immigration (9th February 2014)



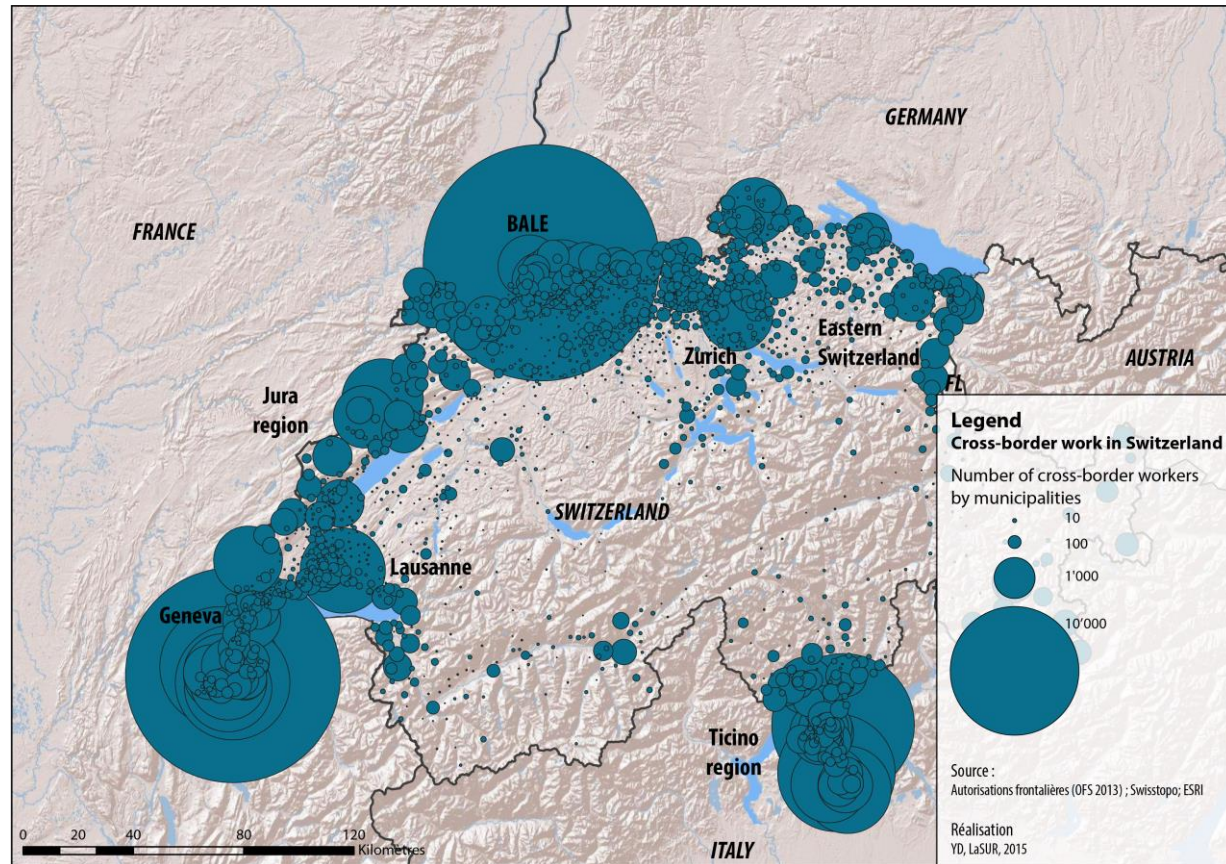
Slovenia-Croatia Border; Photo: David, Kaupp, beyond borders



Cross-border work in Switzerland

- **Particular mobilities emerge with open borders**

- Cross-border work in Switzerland : more than 320 000 cross-border workers in 2017





Impacts on territories : a challenge for sustainable development in cross-border regions

■ Economical impacts

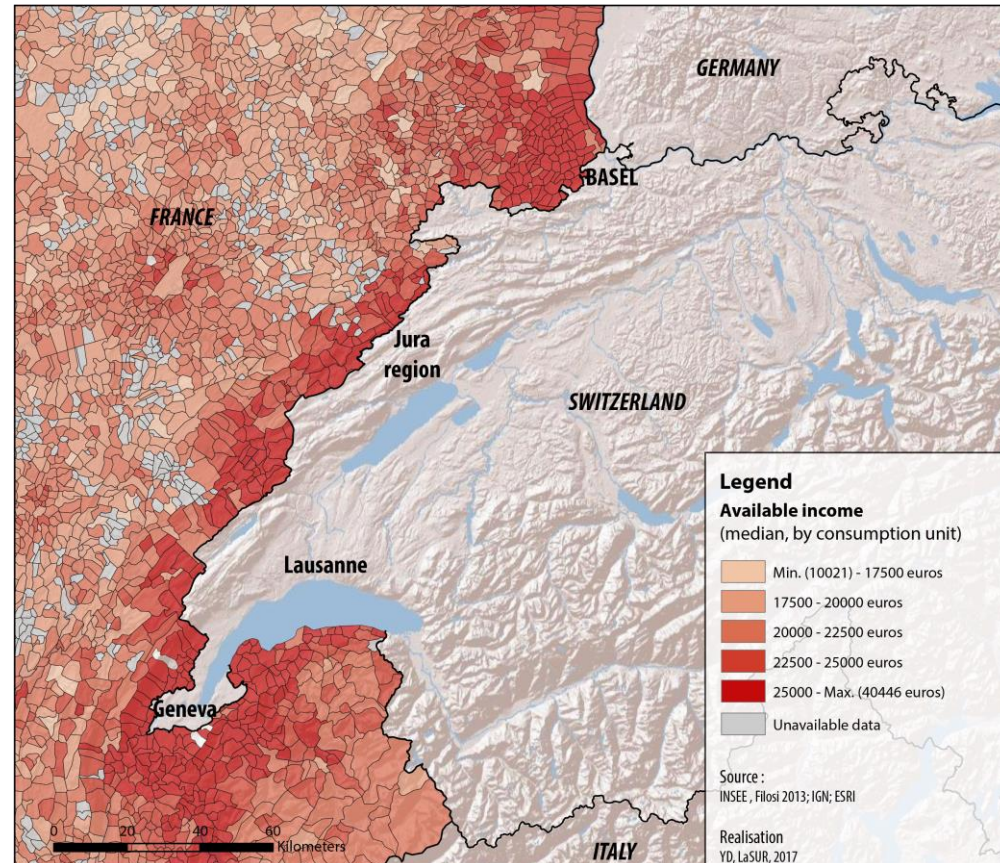
- Price increase in adjacent regions to Switzerland
- (Perceived) pressure on labour market in Switzerland

■ Environmental impacts

- Strong development of urban sprawl
- Motorized traffic

■ Social impacts

- Tensions among the population



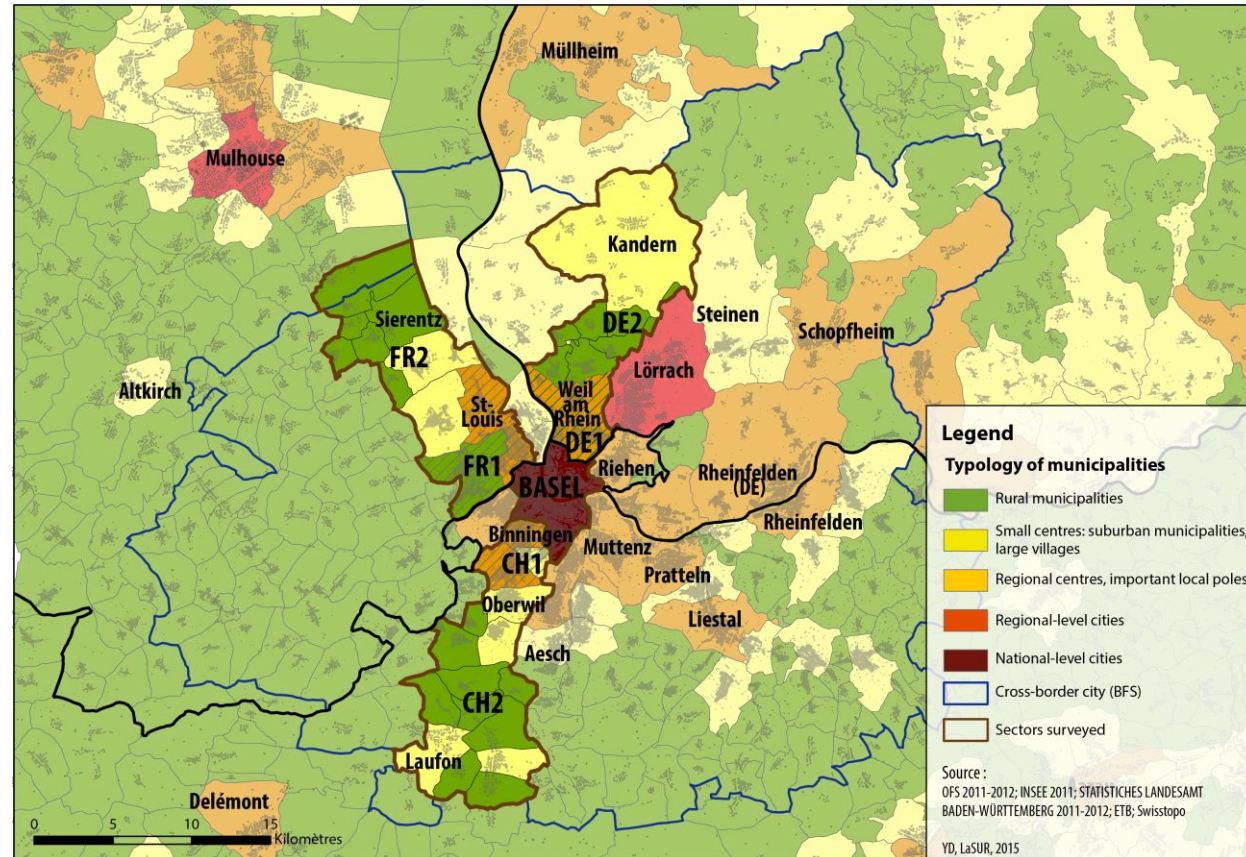


Scientific goals and methodology

- **Main goal : Determining the influence of the national borders on the daily life and daily mobility of the inhabitants of cross-border cities**

- **Basel, as case study**
 - 830 000 inhabitants
 - 3 countries
 - 2 national languages and 3 Germanic dialects

- **Mixed methods**
 - Contextual data (population, economy, employment, mobility, etc.)
 - Interviews (15 in France and in Switzerland)
 - Survey by questionnaires (1615 inhabitants of the cross-border metropolis)



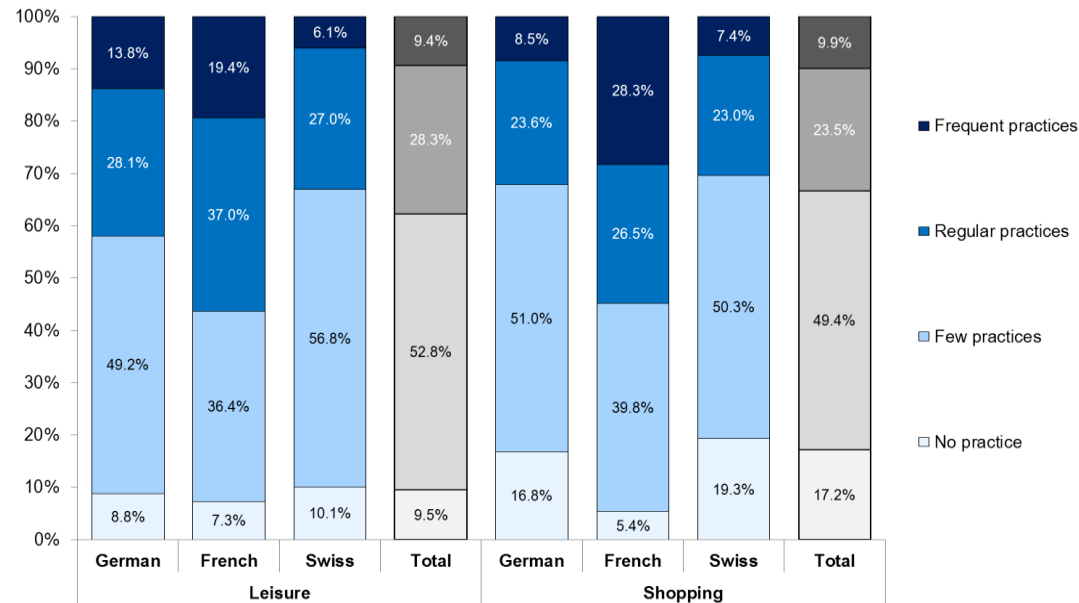


Cross-border lifestyles?

Multi-dimensional approach of daily life

- About 55 000 cross-border workers in the cantons of BS and BL
- 38% of the population cross the borders regularly for leisure motives
- 34% cross the borders regularly to shop
- About 75% of the inhabitants are attached to the trinational metropolis
- Only 14% of the inhabitants have one of their best friends living on the other side of the border

Frequency of cross-border shopping and leisure practices





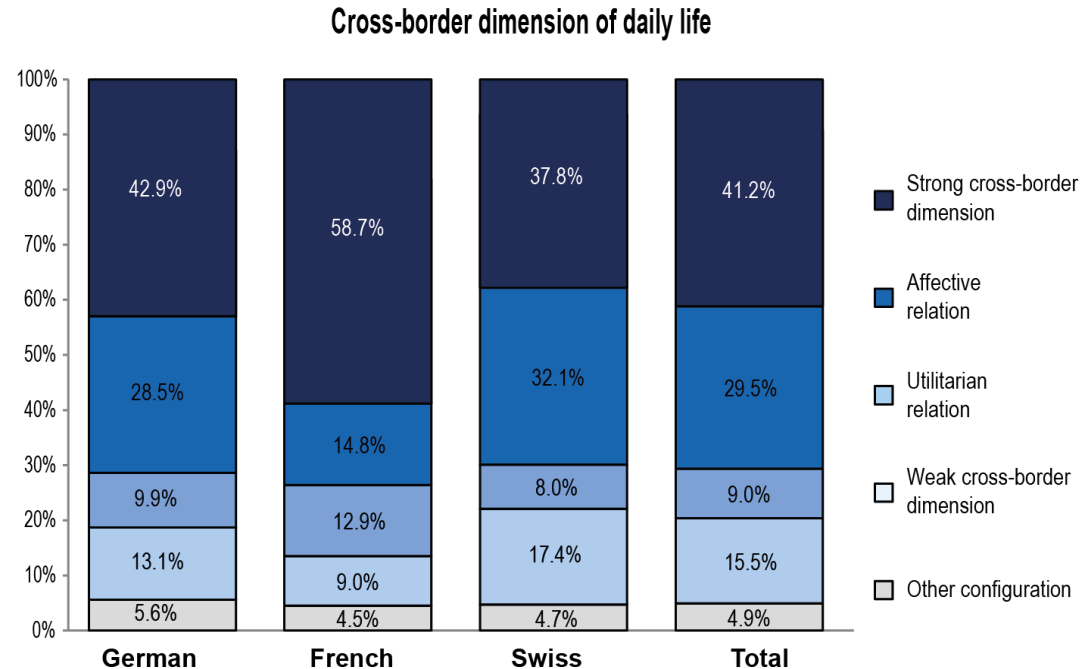
Cross-border lifestyles

▪ Diverse destinations and trip motives

- Germany : cheap products and leisure infrastructure
- Switzerland (Basel) : metropolitan and employment centre

▪ Plurality of relations towards the border depending on the individuals

▪ Relations also based on non-economical logics





Impacts of the border : major challenges

- **The presence of borders has impacts on individuals and territories**

- All individuals and territories do not have the same possibilities to take advantage of this situation

- **Positive situation in the trinational metropolis of Basel**

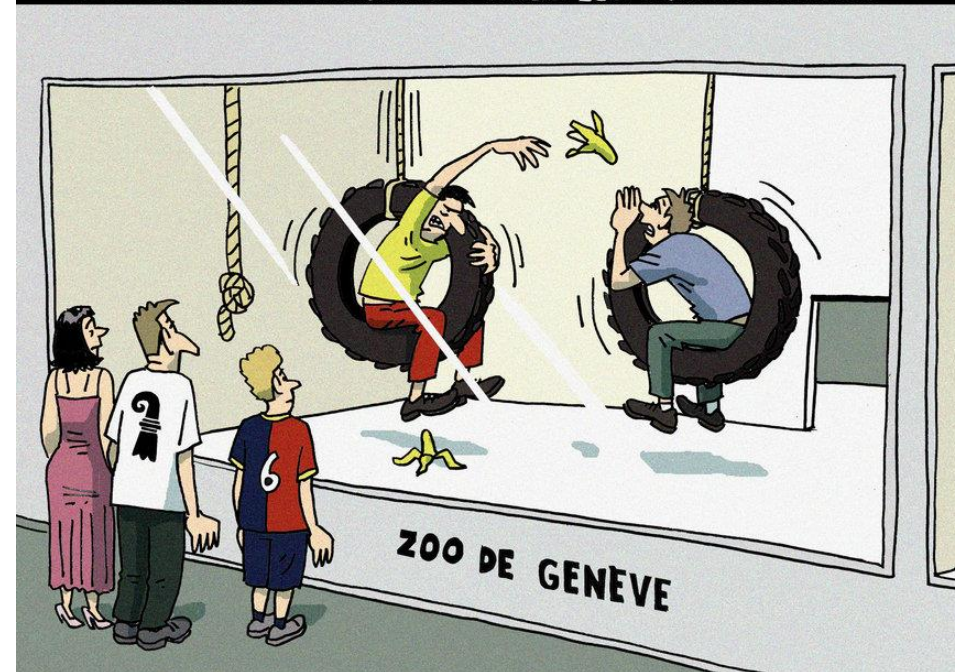
- Relations appear more tense in other Swiss cross-border cities and regions : Geneva, Ticino, Jura region

- **Major challenges for the trinational metropolis of Basel**

- Social cohesion
- Daily Mobility

** In Basel, no tensions with cross-border workers*

A BÂLE, PAS DE TENSIONS AVEC LES FRONTALIERS !



Hermann, TDG, 24.06.2014

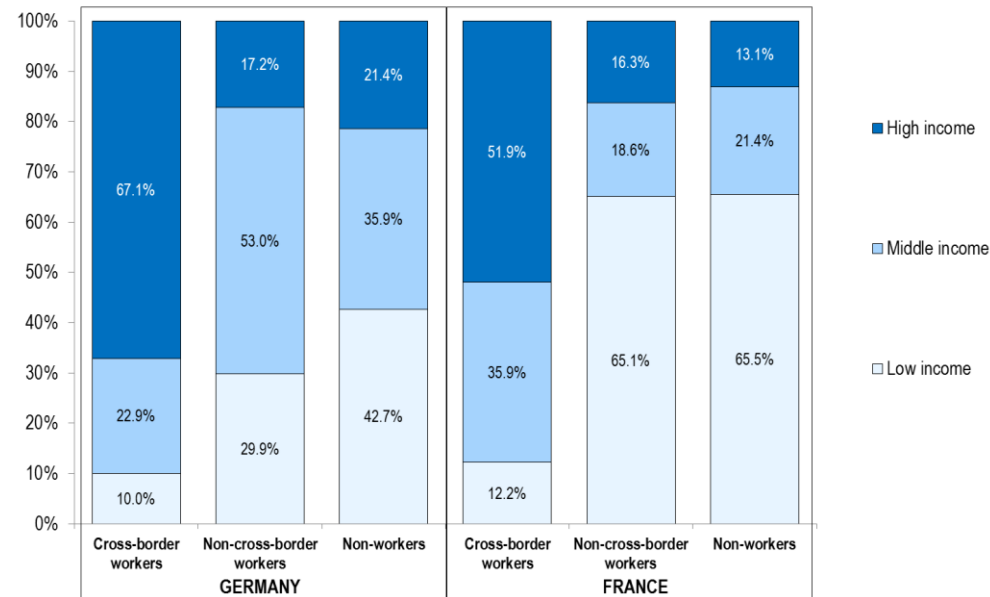


Challenges for the trinational metropolis of Basel

Social cohesion, Inequalities

- **Difficult living conditions for non-cross-border workers (in France)**
 - A kind of jealousy of cross-border workers
- **The possibility of shopping in Germany lowers this problem**
 - Non-cross-border workers and people with low income shop more in Germany
 - What about non-motorized households (especially in France)?
- **Accessibility to Switzerland is becoming more and more difficult for German and French with low income**
- **Cohesion on a linguistic level?**
 - Risk for French cross-border workers and for the whole French part of the metropolis
- **What about the Swiss?**
 - Impacts of cross-border work?

Income: Differences between cross-border workers and non-cross-border workers

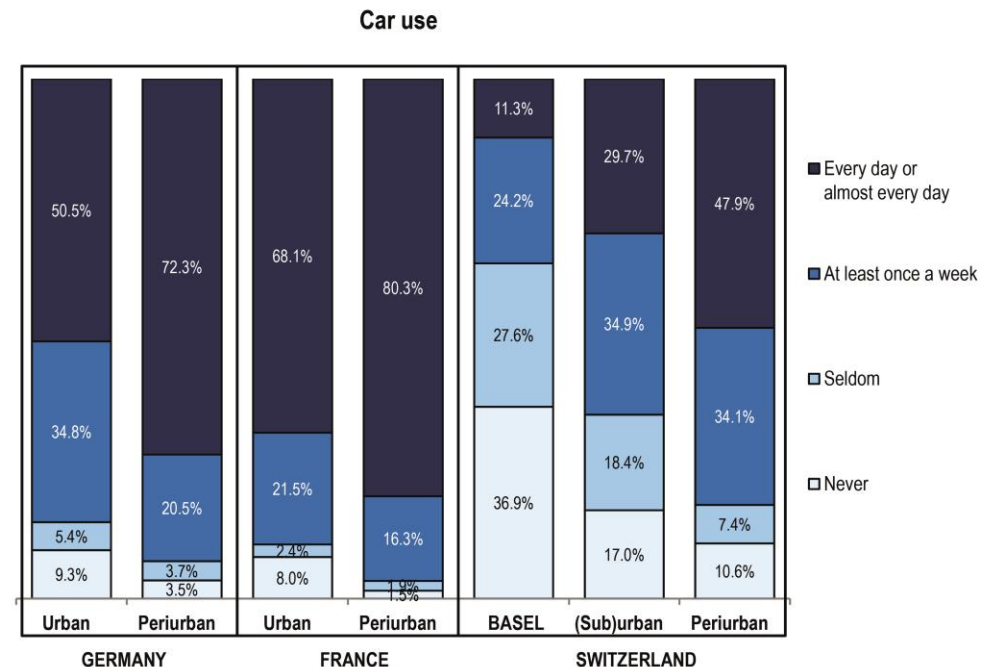
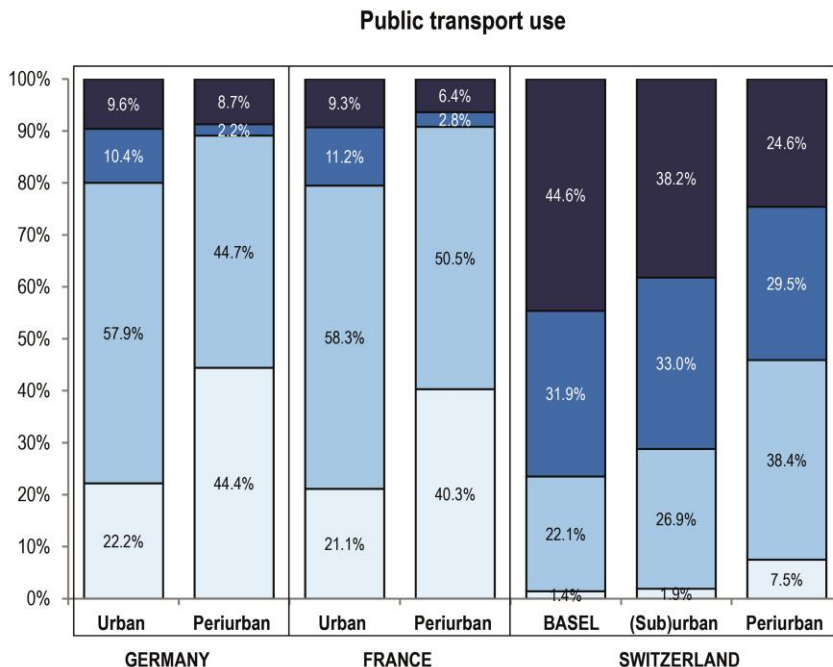




Challenges for the trinational metropolis of Basel

Daily mobility

- **Daily mobility is one of the major sources of tensions**
 - More than 80% of trips coming from France and Germany are made by car
 - Especially problematic when the traffic spills out of major roads : negatively affect the quality of life of the inhabitants of Basel
 - Large differences in the behaviour and expectations in terms of mobility between Swiss on one side, and French and German on the other





Challenges for the trinational metropolis of Basel

Daily mobility

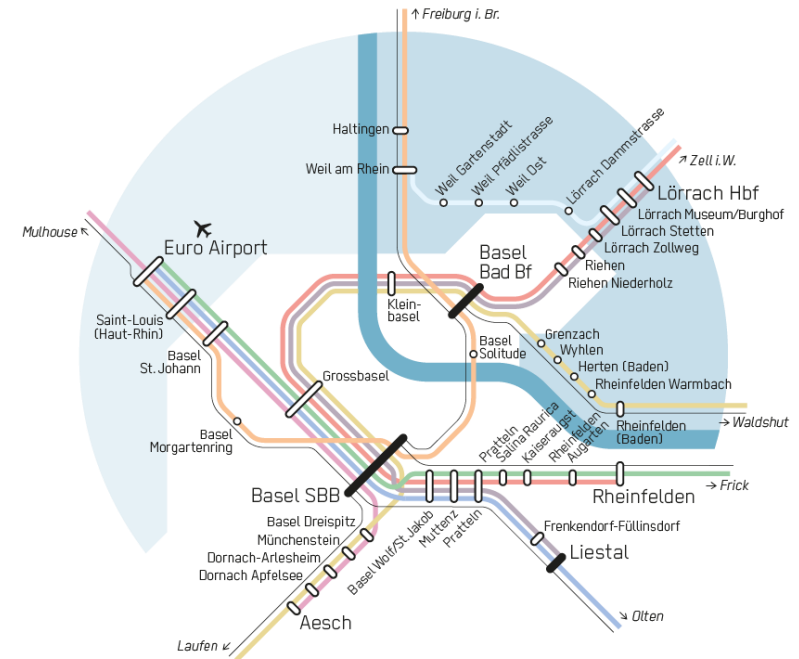
- **However, the situation is less problematic than elsewhere**
 - Geneva region (from France) : 92% of trips are made by car
 - Canton of Neuchâtel (from France) : 95% of trips are made by car
- **Motorized traffic from cross-border workers is a major challenge in most cross-border cities**
 - Need for strong action on daily mobility to improve cross-border relationships
- **In Basel, cross-border transport infrastructure are rather good (train, tram, bus)**
 - Additional measures to set up: cross-border lines accessibility, frequency during off-peak hours, parking, etc.





Conclusion

- **Need for strong measures to preserve the benefits of an «open»-border situation**
 - Housing, working conditions, daily mobility
- **The presence of a national border makes the identification of problem and the setting-up of measures more difficult**
 - Gap between the spatial scope of cross-border relations and the power of states
- **Basel, a model for cross-border (sustainable) development ?**



Projet Herzstück (above) ; Projet 3Land (below)





Thank you for your attention!

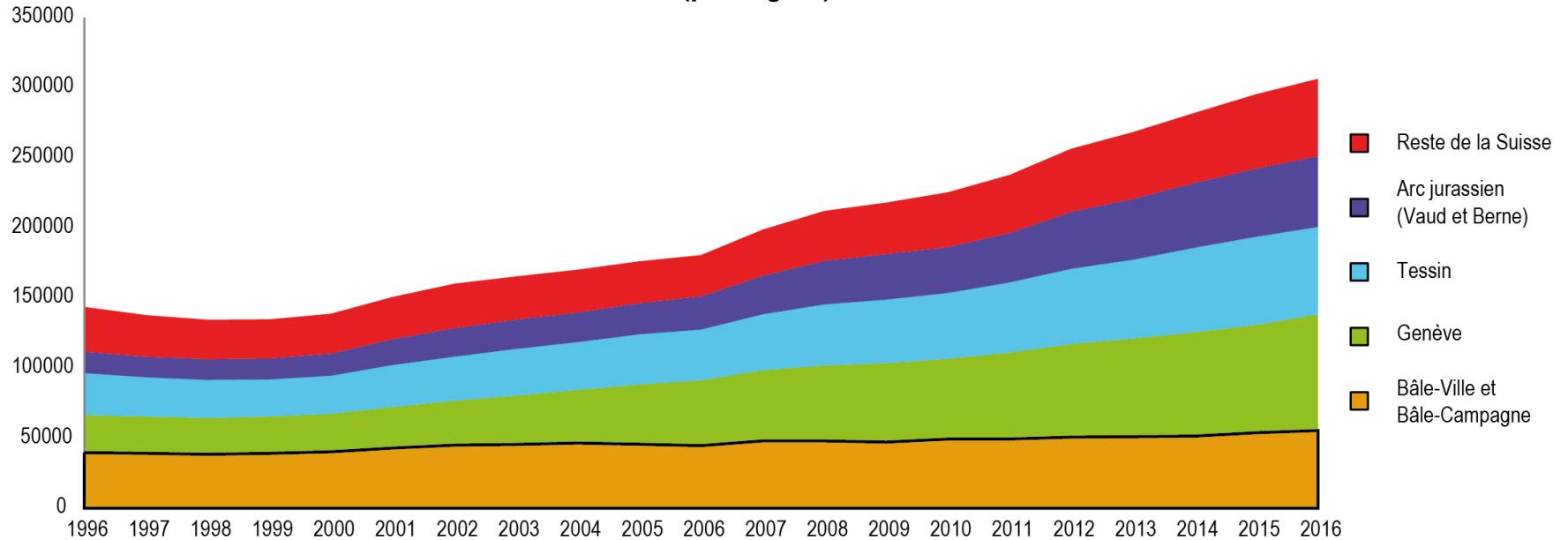


Contact : yann.dubois@epfl.ch

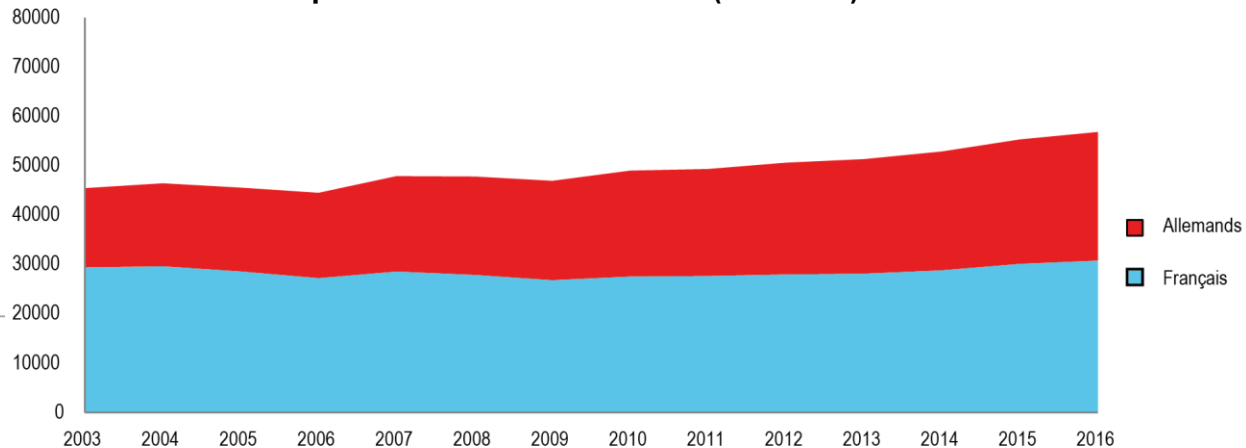


Cross-border workers

Evolution du nombre de frontaliers en Suisse (par région)



Evolution de la provenance des frontaliers (BS et BL)





Cross-border workers

