

Proceedings

Design and Potential Analysis of an Eddy Current Sensor for Inductive Conductivity Measurement in Fluids

Julius Harms^{1,*} and T. A. Kern ¹

¹ Institute for Mechatronics in Mechanics, Hamburg University of Technology

* Correspondence: julius.harms@tuhh.de

Abstract: In the scope of this paper, a first exemplary eddy current sensor for seawater conductivity measurement is developed, based on the derived sensor theory of a previous work. By a high frequency excitation, eddy currents are induced in the fluid and counter-fields measured with a sensing coil. The coils resonance point is used for amplification. The developed prototype is analyzed based on a derived transfer function and FEM-Simulations. The theory is validated using a prototype implementation. With conducted experiments on a sensor test bench, the characteristic were confirmed and disturbances identified. It is shown that frequencies exist, where temperature influence is minimal. This work gives a perspective for a novel sensor to allow seawater conductivity measurement.

Keywords: Salinity; Conductivity; Inductive; Eddy Current; Sensor; Low-Cost; Uncertainty

1. Introduction

Eddy current sensors have the potential to become a cost-effective inductive alternative to the industrial standard of transformer-type conductivity sensors (TICS). TICS are an established solution [1,2], for standard industrial applications up to high precision measurements in the oceanography. Compared to the standard conductivity cells, inductive sensors present a more expensive solution, but allow a housing for protection from corrosion and biofouling. For long-term seawater salinity monitoring, the use of an inductive sensor is unavoidable. The higher prices restrict the quantity of deployed sensors and therefor limit the spatial measurement resolution. In the approach for a cost effective inductive conductivity sensor, the authors of this paper are investigating on the novel inductive eddy current (EC) sensor type [3,4,5]. An EC-Sensor generates an alternating magnetic flux in conductive fluid and measures the effects of the resulting eddy currents. In a previous work, the theory of this sensor, together with a model description was derived and validated based on a sensor prototype and FEM-simulation results [6].

This paper investigates on possible implementations for EC sensors and aims to identify their measurement uncertainties. In the following, an implementation of the sensor is compared to the ideal model representation and FEM-Simulation results to examine temperature influence and possible working points. Since the measured effects of the eddy currents are small in amplitude, the resonance point of the coil is used for natural amplification. It is shown that a strong temperature correlation can be avoided by the selection of the right frequency.

2. Materials and Methods

Various experiments resulted in a sensor design that carries two coils on a ferrite rod. The coupling between both coils is determined by the magnetic field of the excitation coil subtracted by the counter acting magnetic field of the eddy currents:

$$B = \frac{i \cdot w}{A \cdot R_{mag}} - \mu_0 \cdot \left(\sigma \cdot \frac{\delta B}{\delta t} + \epsilon_0 \frac{\delta^2 B}{\delta t^2} \right)$$

To be able to measure this effect, the coupling has to be low while exciting with a high frequency to increase $\delta B/\delta t$. The upper limit for the frequency is given by the resonance point of the coil which was shifted in this experiment by an additional capacitor to keep the measurement frequency below 1MHz. A prototype based on this design was manufactured (Fig. 1b and 1c) and waterproofed by a PU moulded housing.

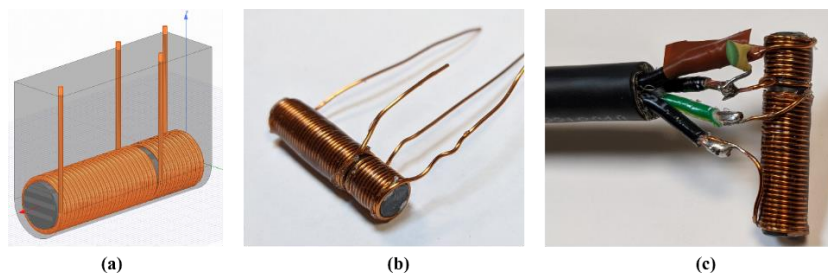


Figure 1: Implementation of the eddy current sensor (a) in the FEM-simulation (b) of the manufactured prototype (c) with soldered capacitor

Besides the implemented prototype, a FEM-Model with the same configuration was designed in Ansys Electronics (Fig 1a). The sensor is used in a test bench environment, where temperature and conductivity can be controlled in a continuously mixing water body. An experiment was conducted with the implemented prototype, where water temperature and conductivity changed over time. In a hysteresis-like progression, the conductivity was reduced from approx. 50mS/cm to approx. 15mS/cm and increased again to above 50mS/cm. During the reduction of conductivity, the temperature was slightly increased from 18.2°C to 19.6°C due to the warmer mixing water. During the increase of conductivity, the temperature was kept almost constant and showed only a slight temperature increase from 19.6°C to 19.7°C. In each cycle 20 measurements were collected to a total of 41 measurement points. For each measurement, a frequency sweep between 750kHz and 1Mhz was collected with a constant excitation current of 10mA.

3. Results

The collected frequency response data in figure 2a shows the secondary coils output voltage for each frequency and measurement. In figure 2b the peak amplitude of the output voltage is plotted together with the changing conductivity and temperature over all measurement points. The results of the experiment primarily indicate a strong and dominating temperature dependency of the sensors voltage output. This is related to the changing copper resistance and the amplification close to the resonance point. The correlation to conductivity can be seen, starting from measurement sample 20, when the temperature remains almost constant but the sensor voltage decreases with rising water conductivity.

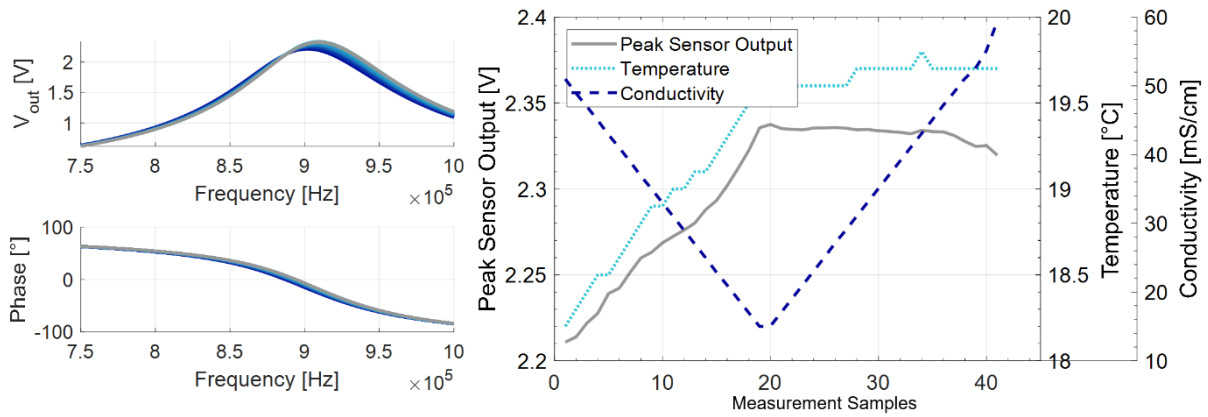


Figure 2: Plot of the maximum voltage output for the characterization test over (a) change in temperature (b) change in conductivity

The correlation between water conductivity and sensor voltage output is also shown by the FEM simulation and TF-model results (figure 3).

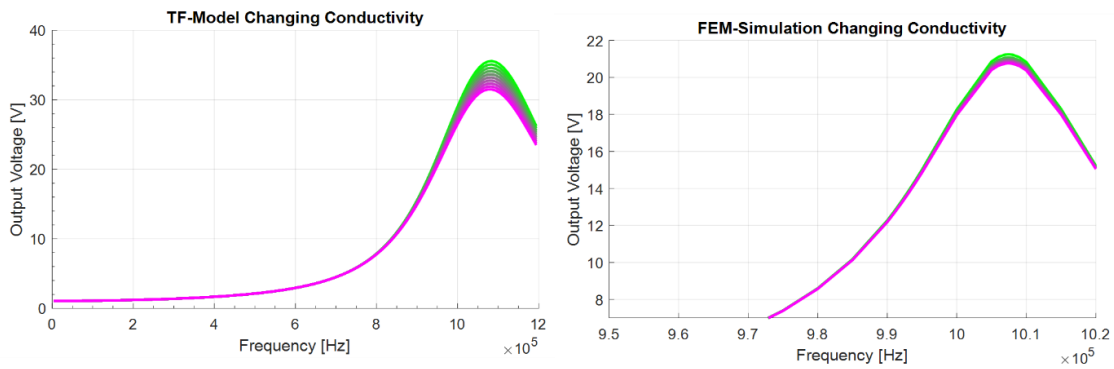


Figure 3: Frequency responses for changing conductivity values of (a) transfer function model and (b) FEM simulation. The water conductivity changes from high (green) to low (purple).

4. Discussion

The equivalent model representation, derived in a previous work, indicates both temperature and conductivity correlation:

$$Z_{ges} = \frac{(R_{cu} + (L + R_{cu} \cdot \mu_0 \cdot \sigma) \cdot s + R_{cu} \cdot \epsilon_0 \cdot \mu_0 \cdot s^2)}{(1 + (C_p \cdot R_{cu} + \mu_0 \cdot \sigma) \cdot s + (\epsilon_0 \cdot \mu_0 + C_p \cdot L + C_p \cdot R_{cu} \cdot \mu_0 \cdot \sigma) \cdot s^2 + C_p \cdot R_{cu} \cdot \epsilon_0 \cdot \mu_0 \cdot s^3)}$$

The frequency response of the transfer function (figure 4a) shows that a point exists where the output voltage is independent of the temperature. In the conducted experiment, this point was found to be at approx. 890kHz. Figure 4b shows the sensor output over water conductivity for the frequency of 890kHz. The colour of the measurement points represent the water temperature from warm (red) to cold (blue). It can be seen, that the output voltage has a linear correlation with the conductivity of the water and water temperature has no obvious influence.

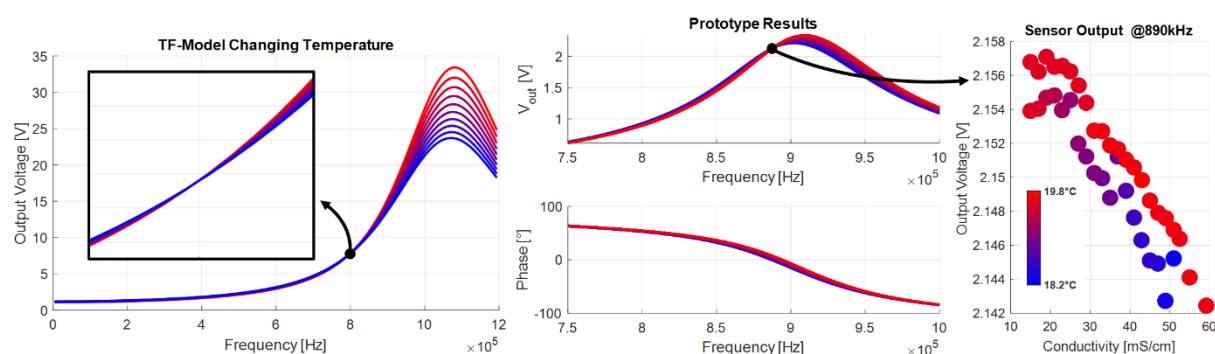


Figure 4: (a) Frequency response of equivalent transfer function model for different temperatures; (b) Experiment results with temperature related colorization; (c) Output voltage at 890kHz over water conductivity

5. Conclusion

The conducted experiment confirms the predicted model behavior and indicates similar results to the FEM-simulation. It was shown, that a very simple and cost effective implementation of an eddy current sensor, allows conductivity measurement to a certain extent. Strong temperature dependencies dominate the measurement result, but it was demonstrated in the experiment as well as in the model that an operating point with very low temperature dependency exists. In this implementation, the sensor uncertainty is still too high for ocean salinity measurement but from manufacturing perspective, the eddy current sensor presents a cost effective alternative to the TICS. However, the high measurement frequency required for the EC-Sensor contributes to greater expense in secondary electronics, which can negatively influence the cost factor. In Summary, further development on eddy current sensors is necessary to develop a commercially viable instrument for salinity measurement. This paper showed the potential of the sensor and gives starting point for future research on eddy current sensors.

References

1. Striggow, K.; Dankert, R. The exact theory of inductive conductivity sensors for oceanographic application, in *IEEE Journal of Oceanic Engineering*, Vol. 10, no. 2, pp. 175-179, April 1985, doi: 10.1109/JOE.1985.1145085.
2. Kang Hui, S.; Jang H.; Kim Gum, C.; Yu Song, C.; Kim Yong, H. A new design of inductive conductivity sensor for measuring electrolyte concentration in industrial field, in *Sensors and Actuators A: Physical*, Vol. 301, 2020, doi: 10.1016/j.sna.2019.111761.
3. Li, W.; Chiang, Y.; Tsou, C. A novel method for inspecting raw milk quality by using dual-coil inductance, *2016 IEEE 29th International Conference on Micro Electro Mechanical Systems (MEMS)*, Shanghai, 2016, pp. 282-285, doi: 10.1109/MEMSYS.2016.7421615.
4. Ding, X.; Chen, X.; Li, N.; Chen, X.; Zhao, X. An inductive salt solution concentration sensor using a planar coil based on a PQCR-L circuit, *Sensors and Actuators A: Physical*, Volume 263, 2017, Pages 246-251, ISSN 0924-4247, doi: 10.1016/j.sna.2017.05.043.
5. Sonehara M.; Van Toai, N.; Sato, T. Fundamental Study of Non-Contact Water Salinity Sensor by Using Electromagnetic Means for Seawater Desalination Plants. *IEEE Transactions on Magnetics* 2016, 52(7), 1–4. <https://doi.org/10.1109/TMAG.2016.2537921>
6. Harms J.; Kern T.A. (in press) Theory and Modeling of Eddy Current Type Inductive Conductivity Sensors. *MDPI Engineering Proceedings* 2020



Copyright: © 2021 by the authors. Submitted for possible open access publication under the terms and conditions of the Creative Commons Attribution (CC BY) license (<http://creativecommons.org/licenses/by/4.0/>).