

Livestock advisors' perception of silvopastoral systems benefits in south Brazil



KAROLINI T.
DE SOUSA



MATHEUS
DENIZ



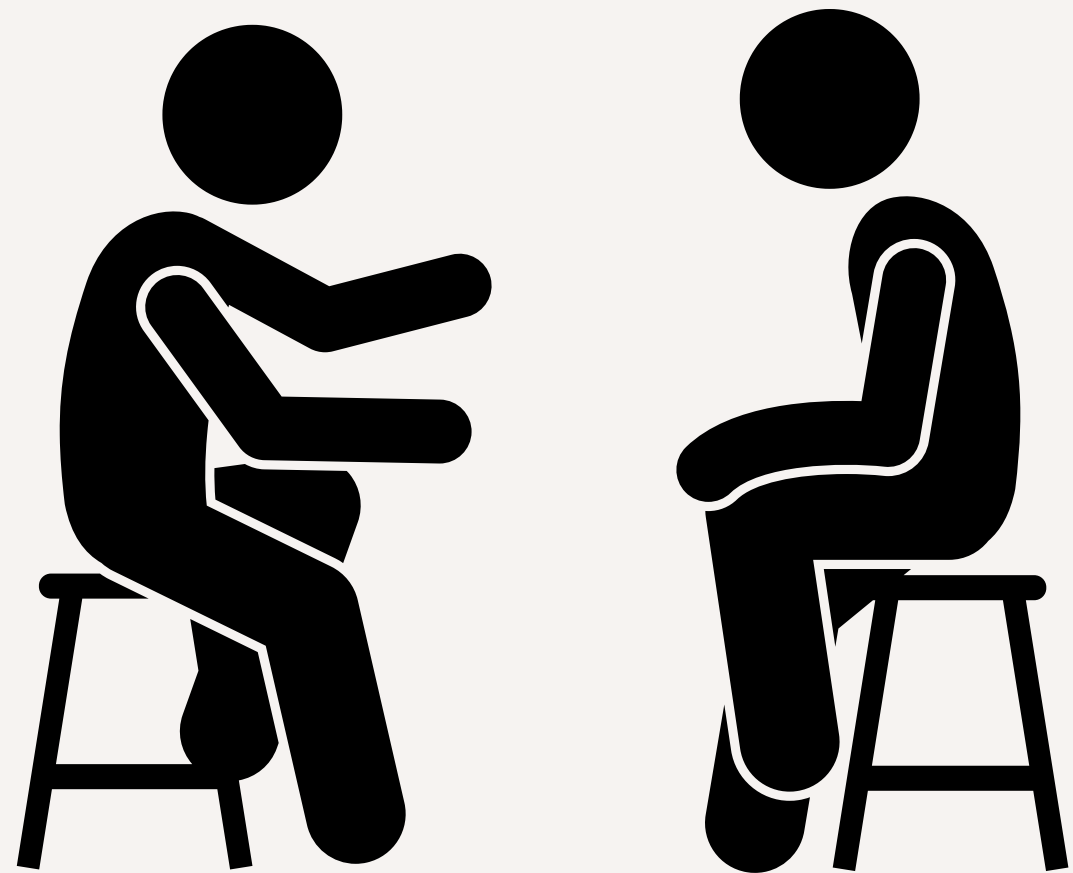
JOÃO R.
DITRICH



JOÃO A. G.
HILL



MARIA J.
HÖTZEL



Livestock advisors are responsible for disseminating knowledge and the concept of the silvopastoral system (SPS) to farmers;

They have an important role in the improvement of livestock sustainability through the mitigation of its impact on climate change.

Objective

In this study we describe livestock advisors' perception regarding the benefits and barriers of the silvopastoral system to the animals and the pasture.



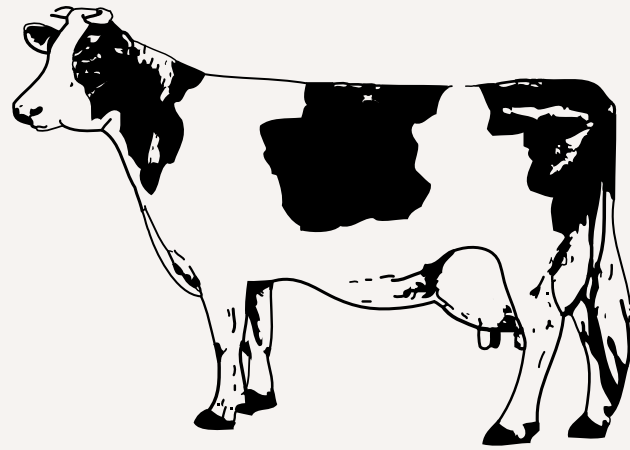
Material and methods



- Livestock advisors (n=228) participated in an online survey.
- The questionnaire (Google Forms) had open-ended, multiple-choice, and 5-point Likert scale questions.
- Participants were more likely to be older (40%, >51 years old), male (84%), agronomist (47%), and 41% had more than 16 years of experience in livestock.

Results

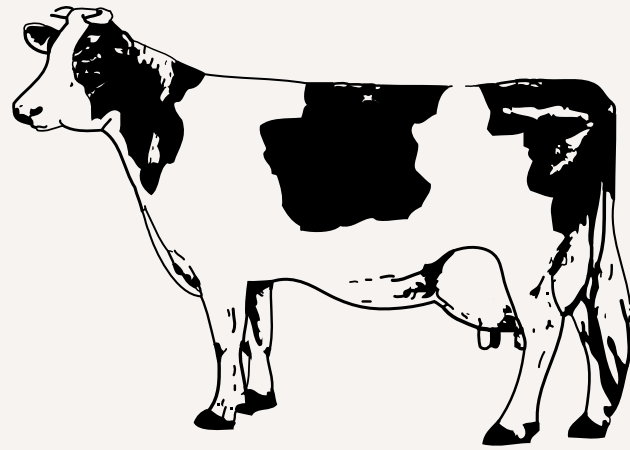
Regards to animals' welfare



99% agree that SPS has
benefits to animal
welfare

Results

Regards to animals' welfare

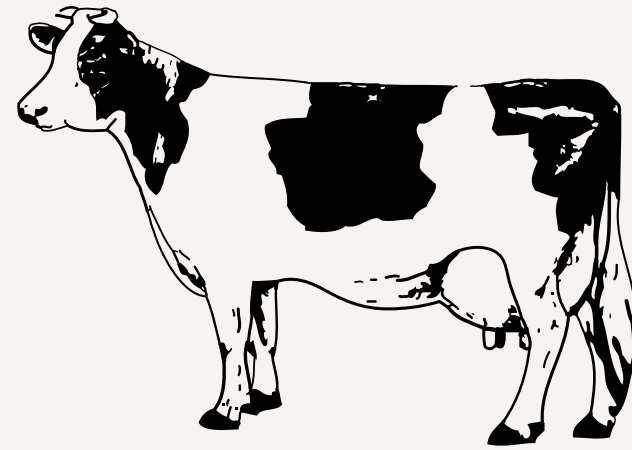


99% agree that SPS has
benefits to animal
welfare

The main benefit
reported was heat
abatement (80%)

Results

Regards to animals' welfare



99% agree that SPS has benefits to animal welfare



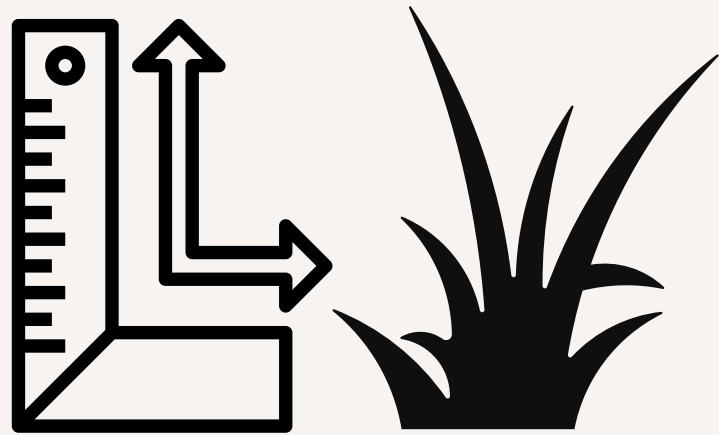
The main benefit reported was heat abatement (80%)



70% associated heat stress with decreasing in milk production

Results

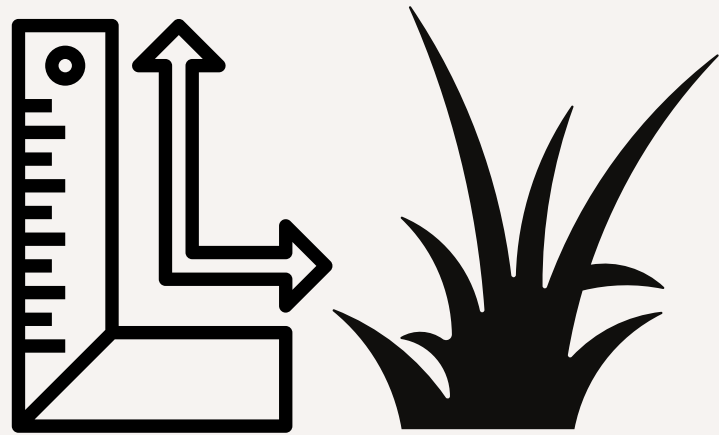
Regards to pasture



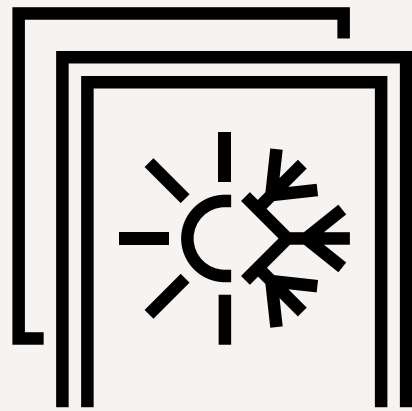
62% believed that the presence of trees brings benefits to the pasture

Results

Regards to pasture



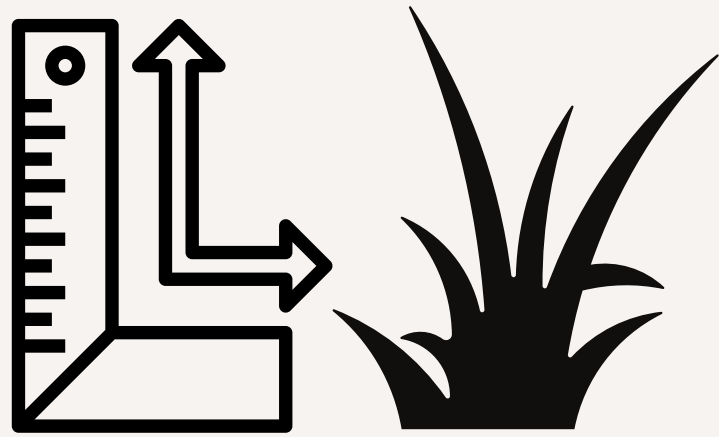
62% believed that the presence of trees brings benefits to the pasture



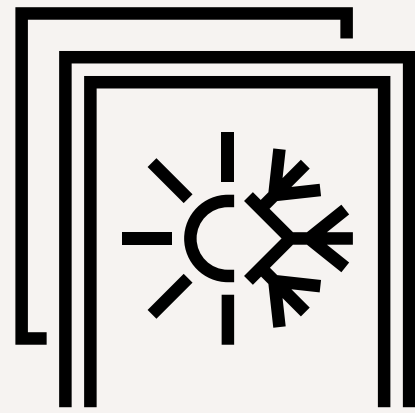
The main benefit was the improvement of microclimate (40%)

Results

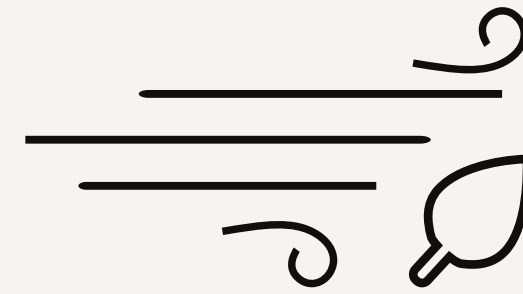
Regards to pasture



62% believed that the presence of trees brings benefits to the pasture



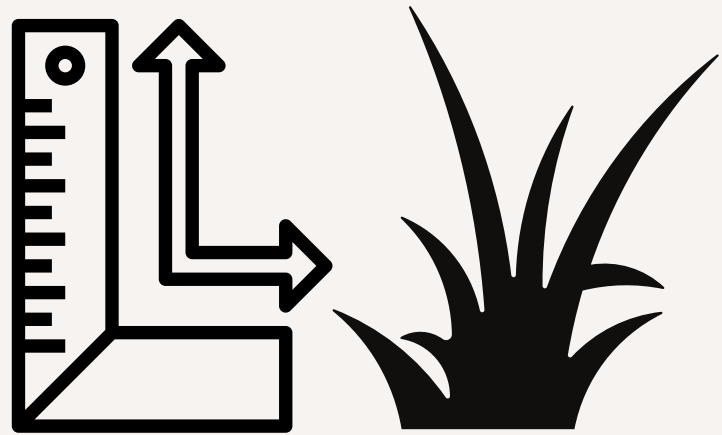
The main benefit was the improvement of microclimate (40%)



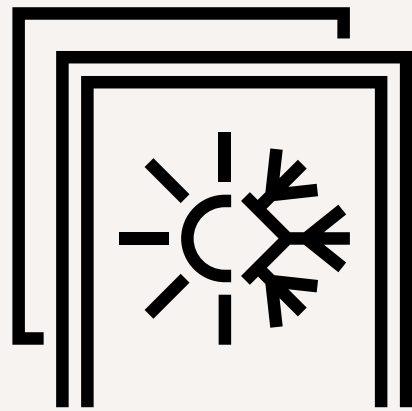
Increased soil humidity (45%)

Results

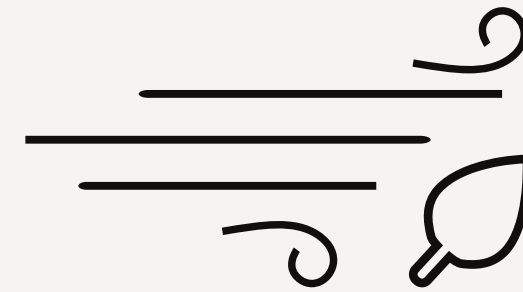
Regards to pasture



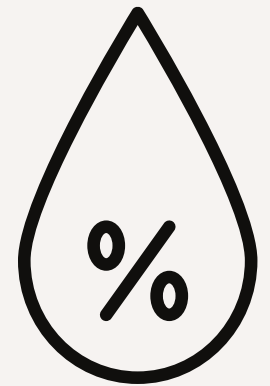
62% believed that the presence of trees brings benefits to the pasture



The main benefit was the improvement of microclimate (40%)

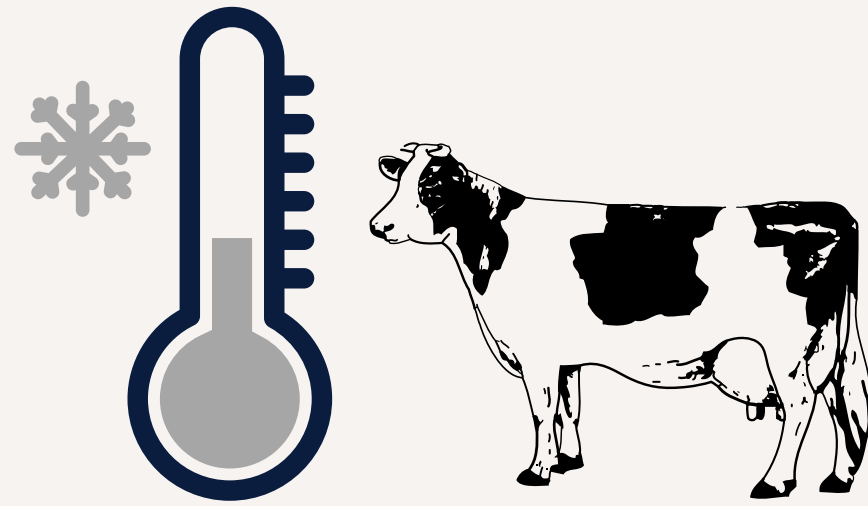


Increased soil humidity (45%)



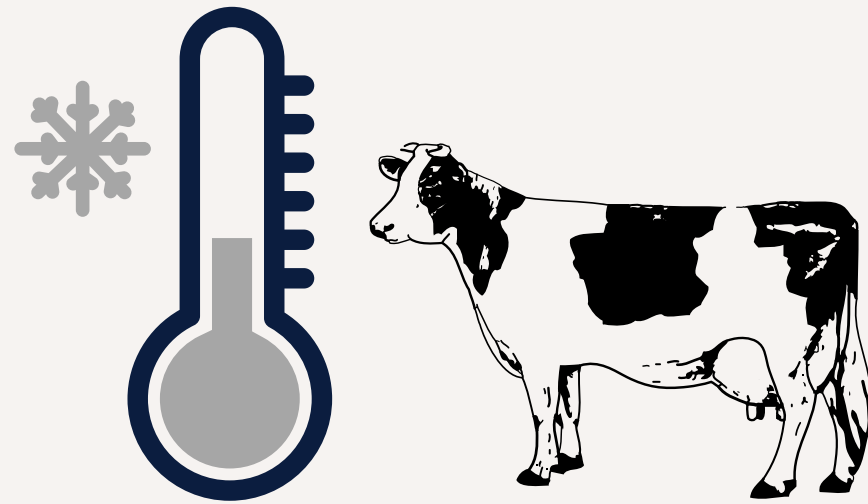
Decreased wind speed (23%)

Results



53% did not consider the SPS as beneficial to animals at low temperatures.

Results



53% did not consider the SPS as beneficial to animals at low temperatures.



15% mentioned that the SPS provides protection from frost for the pasture.

Results

In your opinion, what are the barriers for increase the adoption of the silvopastoral system?



For 60% of the participants the farmers are a barrier for the dissemination SPS

Results

In your opinion, what are the barriers for increase the adoption of the silvopastoral system?



For 60% of the participants the farmers are a barrier for the dissemination SPS



For 20% issues related to system management limited the adoption

Results

In your opinion, what are the barriers for increase the adoption of the silvopastoral system?



For 60% of the participants the farmers are a barrier for the dissemination SPS



For 20% issues related to system management limited the adoption



Lack of trained professionals (14%)

Results

In your opinion, what are the barriers for increase the adoption of the silvopastoral system?



For 60% of the participants the farmers are a barrier for the dissemination SPS



For 20% issues related to system management limited the adoption



Lack of trained professionals (14%)



Insufficient dissemination of information (13%)

Conclusion

Our findings indicate that livestock advisors recognize the silvopastoral system benefits, but this differs between benefits to animal and to pasture; the barriers of SPS dissemination may be minimized by encouraging the training of advisors.





Thank you!

Karolini Tenffen de Sousa
Ph.D. candidate - UFPR

For any questions:

karoltenffen10@hotmail.com

[@karoltenffen](https://www.instagram.com/karoltenffen)

<http://www.agrarias.ufpr.br/portal/litez>

