

Proceeding Paper

# HPLC Screening of Phytoestrogens from Soybeans in Conjunction with Chemometric Data Analysis: A Tool for Selecting the Best Raw Materials for Producing Dietary Supplements for Menopausal Health <sup>†</sup>

Edward Muntean <sup>1,2,\*</sup>, Camelia Urda <sup>2</sup> and Raluca Rezi <sup>2</sup>

<sup>1</sup> University of Agricultural Sciences and Veterinary Medicine, Cluj-Napoca, Romania

<sup>2</sup> Research & Development Station for Agriculture, Turda, Romania

\* Correspondence: edimuntean@yahoo.com

<sup>†</sup> Presented at the 2nd International Electronic Conference on Biomedicines, 1–31 March 2023; Available online: <https://ecb2023.sciforum.net>.

**Abstract:** Soybeans are one of the primary dietary sources of isoflavones—phytoestrogens with numerous benefits on human health, including alleviating the menopausal symptoms, reducing the risk of certain types of cancer and many others. This research provides a combined approach of high performance liquid chromatography and chemometry, able to highlight in a fast way the isoflavones' content of soybean seeds belonging to different genotypes. The proposed approach can be considered not only for quality control assessment purposes, but also for assisting breeding programs targeted to develop new genotypes with the desired isoflavones' content.

**Keywords:** menopausal health; isoflavones; soybeans HPLC

**Citation:** Muntean, E.; Urda, C.; Rezi, R. HPLC Screening of Phytoestrogens from Soybeans in Conjunction with Chemometric Data Analysis: A Tool for Selecting the Best Raw Materials for Producing Dietary Supplements for Menopausal Health. *Med. Sci. Forum* **2023**, *3*, x. <https://doi.org/10.3390/xxxxx>

Published: 1 March 2023



**Copyright:** © 2023 by the authors. Submitted for possible open access publication under the terms and conditions of the Creative Commons Attribution (CC BY) license (<https://creativecommons.org/licenses/by/4.0/>).

## 1. Introduction

Soybeans are extensively cultivated crops with multiple applications, such as human consumption, livestock feed, biofuel production, and the fabrication of various chemicals. They boast a substantial amount of proteins, as well as ample amounts of fiber, vitamins, and minerals, all of these making soybeans a nutritious option [1–3]; as a result of their nutritional profile and health advantages, there is growing interest in breeding soybeans with enhanced protein, fatty acid and isoflavone content.

Soybeans are a leading source of isoflavones—phytoestrogens with numerous health benefits, particularly for women's health; previous studies have shown that these biologically active compounds can alleviate menopausal symptoms, reduce the risk of breast, prostate, and colon cancer, lower cholesterol levels, improve heart health by decreasing inflammation and increasing blood flow, protect against osteoporosis, reduce the risk of depression and anxiety, and even have a positive impact on cognitive function and mental health [4–7]. As a result, isoflavones are increasingly used in the production of dietary supplements over the last decade.

High performance liquid chromatography (HPLC) is currently the preferred method for separating components in mixtures; it is a highly modern, efficient, and versatile technique that is widely used to separate, identify, and quantify analytes, as well as to obtain the chemical profile or fingerprint of a diverse range of analytes from biological samples, hence being used in this study.

The objective of this research is to develop a synergistic approach of HPLC and chemometric techniques, allowing for a swift and convenient evaluation of the isoflavone content in soybean seeds from diverse genotypes, with the aim of selecting the optimal

raw materials for the production of dietary supplements for menopausal health. The targeted isoflavones were genistein, glycitein, daidzein, daidzin, glycitin and genistin.

## 2. Materials and Methods

### 2.1. Biological material

Soybean seeds originating from 20 genotypes were harvested at maturity from the Research & Development Station for Agriculture, Turda – Romania

### 2.2. Sample preparation

Around 100 g seeds were milled and ~1 g from the resulted flour was weighed, then defatted using 10 mL of hexane. Extraction was accomplished using 20 mL ethanol 50% on a magnetic stirrer (350 rpm, 600 °C, 2 h); the resulted suspensions were vacu-um-fil-tered, brought to the volume of 25 mL with 50% ethanol, filtrated through 0.47 µm mem-brane filters then subjected HPLC analysis.

### 2.3. HPLC analysis

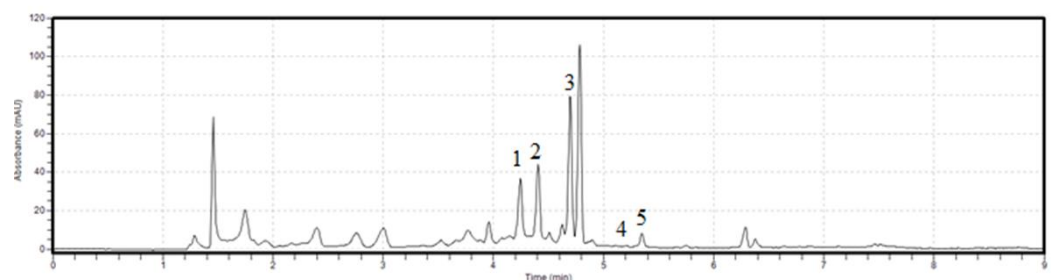
Chromatographic analysis was accomplished using a Flexar system (Perkin Elmer) consisting from two UHPLC pumps, a solvent degasser, an autosampler, a column oven and an UV-VIS detector. Baseline separations were accomplished for daidzin, glycitin, genistin, daidzein, genistein and glycitein using a Kinetex column and gradient elution with acetonitrile and water, both with 0.1% H<sub>3</sub>PO<sub>4</sub>, in a total run time less than 8 min; the flowrate was 1 mL/ min and the injection volume of 5 µL. Quantifications were based on the external standard method.

### 2.4. Data analysis

Chromatographic data analysis was accomplished using Chromera (Perkin Elmer), then chromatographic data were further processed using Excel (Microsoft). Autoscaled preprocessed chromatographic data were further subjected to principal component anal-ysis (PCA) using Matlab (MathWorks Inc., USA.)

## 3. Results and Discussion

The HPLC analysis of soybeans genotype revealed distinct fingerprints of isofla-vones, which were influenced by genetic factors; Figure 1 shows a representative isofla-vone pattern for a genotype having daidzin, glycitin and genistein as major isoflavones.



**Figure 1.** Representative HPLC chromatogram of isoflavones from a soybean genotype containing high amounts of isoflavones. Peak ID's: 1-daidzin, 2-glycitin, 3-genistin, 4-daidzein, 5-glycitein.

The brief descriptive statistics of the obtained data is presented in Table 1, revealing that daidzin and genistin are the major isoflavones from the studied genotypes; in 15% from the analyzed samples, daidzein and genistein were not detected.

**Table 1.** Concentration ranges for isoflavones in the studied genotypes [mg/ 1000 g].

	Daidzin	Glycitin	Genistin	Daidzein	Glycitein	Genistein	Total
Min.	308.76	27.73	349.57	0.00	4.23	0.00	829.20
Max.	777.98	84.76	935.96	14.38	28.39	16.85	1732.59
Average	567.48	62.93	596.40	7.29	15.17	8.59	1257.86

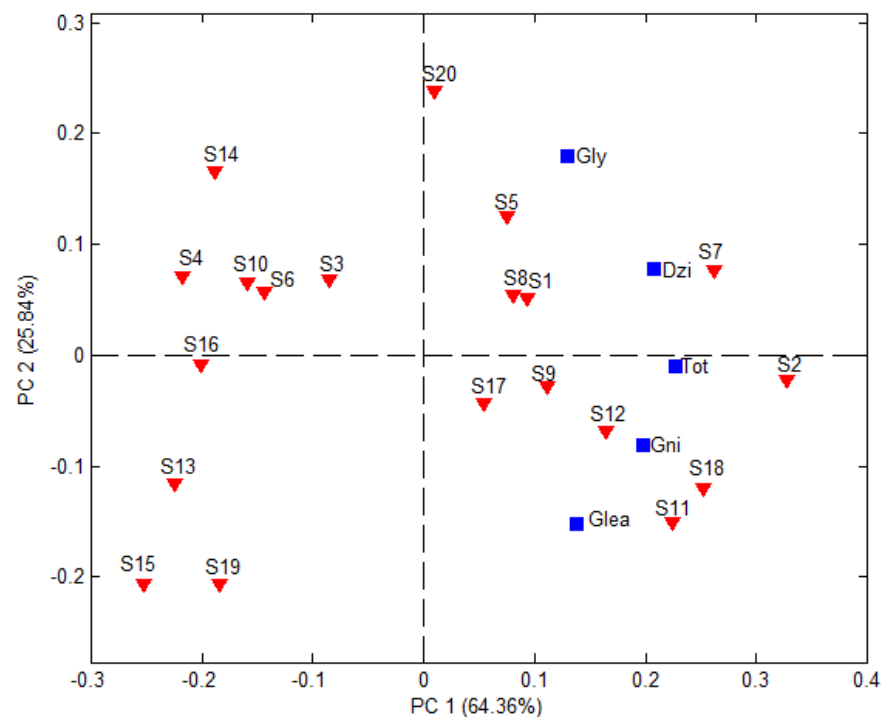
PCA was accomplished on the experimental dataset using five variables (concentrations of glycitin, daidzin, genistin, glycitein and total isoflavones), leading to a model in which the first two principal components explained 90.19% variance.

The biplot from Figure 2 emphasizes the soybeans genotypes with the highest:

- total content of isoflavones (S2, S7, S18);
- content of glycitin (S20);
- content of daidzin (S7);
- content of genistin (S11);

As well as genotypes with similar isoflavone profiles (S8–S1, S10–S6).

Hence, the biplot can be a useful tool in assisting decision-making for selecting a certain genotype as raw material for the production of food supplements designed for menopausal health.



**Figure 2.** Biplot diagram obtained from the principal component analysis; here, the concentration of glycitin—Gly/ daidzin—Dzi/ genistin—Gni/ glycitein—Glea/ total isoflavones—Tot.

#### 4. Conclusions

- The developed HPLC method proved to be fast (under 8 min run-time for the separation of the targeted isoflavones), sensitive, reproducible, accurate and suitable for the analysis of soybean seeds.
- The obtained results extended the current knowledge, providing the content of isoflavones in the studied genotypes.
- The reported values can support future nutrition studies involving isoflavones from plant sources, as well as their use in different functional products.

- Overall, the proposed approach can be considered an efficient tool for both quality control assessment purposes and for assisting breeding programs targeted at developing new genotypes with the desired isoflavones' profile.

**Author Contributions:** Conceptualization, E.M.; methodology, E.M.; field experiments, C.U. and R.R.; sampling and sample processing, C.U. and R.R.; data processing, E.M.; validation, E.M.; C.U. and R.R.; investigation, E.M.; writing—original draft preparation, E.M.; writing—review and editing, E.M.; C.U. and R.R. All authors have read and agreed to the published version of the manuscript.

**Funding:** This research received no external funding.

**Institutional Review Board Statement:** Not applicable.

**Informed Consent Statement:** Not applicable.

**Data Availability Statement:** Not applicable.

**Conflicts of Interest:** The authors declare no conflict of interest.

## References

1. Hartman, G.L.; West, E.D.; Herman, T.K. Crops that feed the World 2. Soybean—Worldwide production, use, and constraints caused by pathogens and pests. *Food Secur.* **2011**, *3*, 5–17. <https://doi.org/10.1007/s12571-010-0108-x>.
2. Medic, J.; Atkinson, C.; Hurburgh, C.R. Current knowledge in soybean composition. *J. Am. Oil Chem. Soc.* **2014**, *91*, 363–384.
3. Rizzo, G.; Baroni, L. Soy, Soy Foods and Their Role in Vegetarian Diets. *Nutrients* **2018**, *10*, 43. <https://doi.org/10.3390/nu10010043>.
4. He, F.J.; Chen, J.Q. Consumption of soybean, soy foods, soy isoflavones and breast cancer incidence: Differences between Chinese women and women in Western countries and possible mechanisms. *Food Sci. Hum. Wellness* **2013**, *2*, 146–161.
5. Pabich, M.; Materska, M. Biological effect of soy isoflavones in the prevention of civilization diseases. *Nutrients* **2019**, *11*, 1660.
6. Poluzzi, E.; Piccinni, C.; Raschi, E.; Rampa, A.; Recanatini, M.; Ponti, F. Phytoestrogens in Postmenopause: The State of the Art from a Chemical, Pharmacological and Regulatory Perspective. *Curr. Med. Chem.* **2014**, *21*, 417–436. <https://doi.org/10.2174/09298673113206660297>.
7. Wang, Y.; Liu, L.; Ji, F.; Jiang, J.; Yu, Y.; Sheng, S.; Li, H. Soybean (*Glycine max*) prevents the progression of breast cancer cells by downregulating the level of histone demethylase JMJD5. *J. Cancer Res. Ther.* **2018**, *14*, 609.

**Disclaimer/Publisher's Note:** The statements, opinions and data contained in all publications are solely those of the individual author(s) and contributor(s) and not of MDPI and/or the editor(s). MDPI and/or the editor(s) disclaim responsibility for any injury to people or property resulting from any ideas, methods, instructions or products referred to in the content.