

Proceeding Paper

Hesitant Intuitionistic Fuzzy Approach in Optimal Irrigation Planning in India [†]

S. V. Pawar ¹, P. L. Patel ² and A. B. Mirajkar ³

¹ Sardar Vallabhbhai National Institute of Technology, Surat 395007, India; sangita.pawar23@gmail.com; Tel.: +91-9561838080

² Professor, Sardar Vallabhbhai National Institute of Technology, Surat 395007, India, plpatel@ced.svnit.ac.in; Tel.: +91-9904003857

³ Associate Professor, Visvesvaraya National Institute of Technology, Nagpur 440010, India; ashmirajkar@gmail.com; Tel.: +91-9850837937

* Correspondence: email1@email.com

[†] Presented at the 7th International Electronic Conference on Water Sciences, 15–30 March 2023; Available online: <https://ecws-7.sciforum.net>.

Abstract: The hesitant intuitionistic fuzzy optimization method optimizes multi-objective optimization problems under uncertainty and hesitation; and reflects the practical aspects of better decision-making. Hesitant intuitionistic fuzzy optimization (HIFO), a new optimization technique, has been suggested in the current study to find the best cropping pattern in the Kakrapar Right Bank Main Canal (KRBMC) command area of Ukai-Kakrapar Water Resources Project in India. The HIFO multi-objective fuzzy linear programming (HIFO MOFLP) result includes three number of objectives, as; maximization of net irrigation benefits (NIB), maximization of employment generation (EG) and minimization of cost of cultivation (CC), along with the appropriate constraints set. The performance of the aforesaid model is evaluated based on irrigation intensity, degree of acceptance (α^r), degree of rejection (β^r) for inflows corresponding to 75% exceedance probability. The irrigation intensity from the study HIFO MOFLP model has been found to be 82.05%, while NIB, EG and CC from the proposed model are 5572.31 million Rs, 14,287.27 thousand-man days and 3429.99 million Rs, respectively. The proposed HIFO MOFLP model has been compared with IFO MOFLP approach for the same command area and found to give improved results in the form of the irrigation intensity of command area and objective function values. The current study demonstrates that, how hesitant fuzzy membership function and non-membership function can be applied to deal with uncertainty and hesitation for a real-world problem.

Keywords Hesitation and Uncertainty; Hesitant Intuitionistic fuzzy optimization; Kakrapar Right Bank Main Canal; Intuitionistic fuzzy optimization

Citation: Pawar, S.V.; Patel, P.L.; Mirajkar, A.B. Hesitant Intuitionistic Fuzzy Approach in Optimal Irrigation Planning in India. *Environ. Sci. Proc.* **2023**, *5*, x. <https://doi.org/10.3390/xxxxx>

Academic Editor(s):

Published: 15 March 2023



Copyright: © 2023 by the authors. Submitted for possible open access publication under the terms and conditions of the Creative Commons Attribution (CC BY) license (<https://creativecommons.org/licenses/by/4.0/>).

1. Introduction

Water resource planning and management has grown extremely complex as a result of competing and conflicting user needs. Further, estimation of irrigation demand, availability of labour, crop prices, and reservoir inflows are imprecise and uncertain in nature in water resource management and planning. In these situations, fuzzy optimization is the best suited to cope up uncertainty and impreciseness in the system. For the best irrigation planning for the Kakrapar right bank main canal (KRBMC) command area in India, Mirajkar and Patel (2011) used Multiobjective Linear Programming with Fuzzy Decision Set. They took into account three objectives and provided a compromise result with a degree of satisfaction (λ) of 0.503. Crisp linear programming was utilized by Mirajkar and Patel (2012) to resolve three no. of conflicting objectives, including maximization of net

irrigation benefit, employment creation, and minimization of cultivation costs. Such problem was solved concurrently to find multi-objective fuzzy solution with maximum-minimum operators. Two-phase and fuzzy compromised techniques were used to improve the solution using maximum-minimum operator. These algorithms were validated for the KRBMC in the Ukai command area of India. Chan et al. (2022) introduced a new fuzzy robust control method for linear parameter varying systems. Results from the proposed model revealed that the methodology has good efficiency and performance. The generalization of fuzzy sets by Atanassov (1986) included the hesitation margin, which is equal to 1 minus (membership degree plus non-membership degree). The use of IFO in multi-objective linear programming was examined by Bharati and Singh (2014), who also investigated the effects of linear and non-linear membership functions on optimization. Non-linear membership as well as non-membership functions outscored linear membership and non-membership functions in the IFO technique. Angelov (1997) found that membership degree which is objective functions degree of acceptance is not complimentary to non-membership or rejection. The study demonstrated that intuitionistic fuzzy optimization (IFO) solutions outperformed the traditional fuzzy and crisp optimization methods. Sahoo et al. (2006) solved an MOFLP problem for the development and implementation of land-water-crop system of the Mahanadi-Kathajodi Delta in Eastern India. A unique compromise ratio technique for multiple criterion decision-making in the water resources management was introduced by Hashemi et al. (2013) based on Atanassov's intuitionistic fuzzy sets idea. Garai and Roy (2013) developed the idea of the hesitation index for the optimization of a fictitious mathematical problem where the objective functions included maximization of the degree of acceptance, minimization of the degree of rejection, and hesitation. In order to assist policymakers in reducing water shortages, Li et al. (2017) developed an intuitionistic fuzzy (IF) multiobjective non-linear programming (IFMONLP) method for allocating water for irrigation purposes in both dry and rainy circumstances. An ambiguous transportation issue was studied by Ebrahimnejad and Verdegay (2018). Intuitionistic fuzzy multi-objective geometric programming was proposed by Jafarian et al. (2018) as a solution to multi-objective nonlinear programming issues. In order to establish the cropping pattern in the KRBMC command area of the Ukai-Kakrapar water resources project in India, Pawar et al. (2022-a) adopted the IFO methodology as a new optimization method. Other uncertainty characteristics, such as the degree of acceptance, rejection, and hesitation, were also presented in addition to the best cropping pattern. To maximize net irrigation benefit, create jobs, and minimize cultivation costs, Pawar et al. (2022-b) applied the IFO MOFLP model to optimize crop allocation in the Ukai-Kakrapar water resources project. For the multiobjective optimization issue, Bharati (2022) provided a hesitant intuitionistic fuzzy approach, and an exemplary example demonstrated the superiority of the suggested model.

2. Description of Study Area

One of the biggest multipurpose projects in India is the Ukai water resources project, which is situated on the Tapi River. The Kakrapar weir is situated 29 kilometres downstream of the Ukai Dam at latitude 21°22' N and longitude 73°16' E. The Kakrapar weir consists of two major canals for irrigation the crops on both sides of the weir, namely, KRBMC and the Kakrapar Left Bank Main Canal (KLBM), having 1,13,123 hectares and 1,45,335 hectares of culturable command areas, respectively. Pawar et al. (2022-a) included the index map of the KRBMC inside the Ukai-Kakrapar project.

3. Methodology and Model Development

In this study, the best cropping pattern for the KRBMC command area is determined by maximizing net benefits, creating jobs, and minimizing cultivation costs under a specific set of constraints namely, available water resource and land. Mirajkar and Patel

(2016) give outline of each objective and constraint (2016) while Pawar et al. (2022-a) describe objective functions and constraints briefly.

3.1. Objective Functions and Constraints

In this study, three no. of objective functions i.e., maximizing net irrigation benefits (Z_1), employment generation (Z_2), and minimizing cultivation costs (Z_3) are taken into account along with constraints on planting area, affinity, and water allocation. Section 4 describes the formulation of Hesitant intuitionistic fuzzy optimization while using optimal solutions of individual objective functions.

3.2. Hesitant Intuitionistic Fuzzy Optimization (HIFO)

KRBMC has been taken into account in this study when using the HIFO approach. In Figure 1, a flow chart describing the details of HIFO implementation for the KRBMC area is shown. Using Equations (1) and (2), the hesitant membership and non-membership functions for the maximization type objective function are briefly described.

$$\mu_m^{Er}(x) = \delta^r \begin{cases} 0 & \text{if } Z_m(x) \leq L_m^\mu \\ \frac{Z_m(x) - L_m^\mu}{U_m^\mu - L_m^\mu} & \text{if } L_m^\mu \leq Z_m(x) \leq U_m^\mu \\ 1 & \text{if } Z_m(x) \geq U_m^\mu \end{cases} \quad (1)$$

$$\nu_m^{Er}(x) = \delta^r \begin{cases} 0 & \text{if } Z_m(x) \geq U_m^\nu \\ \frac{U_m^\nu - Z_m(x)}{U_m^\nu - L_m^\nu} & \text{if } L_m^\nu \leq Z_m(x) \leq U_m^\nu \\ 1 & \text{if } Z_m(x) \leq L_m^\nu \end{cases} \quad (2)$$

Here, $\mu_m^{Er}(x)$ is hesitant membership and, $\nu_m^{Er}(x)$ are hesitant membership and non-membership function for m th objective function, $Z_m(x)$ is the value of objective function, $U_m^\mu = \max(Z_m(x))$, $L_m^\mu = \min(Z_m(x))$, $L_m^\nu = L_m^\mu$, $U_m^\nu = \emptyset \times U_m^\mu$, $\emptyset \in [1, 3]$. Here, $m = 1, 2$ and 3 are number of objective functions, \emptyset is a hesitant parameter and δ^r is a multiplication factor with $0 \leq \delta^r \leq 1$ wherein $r = 1, 2, \dots, 9$.

- (a) The membership and non-membership functions were formed with the Equations (3) and (4) in order to minimize the objective function.

$$\mu_m^{Er}(x) = \delta^r \begin{cases} 0 & \text{if } Z_m(x) \geq U_m^\mu \\ \frac{U_m^\mu - Z_m(x)}{U_m^\mu - L_m^\mu} & \text{if } L_m^\mu \leq Z_m(x) \leq U_m^\mu \\ 1 & \text{if } Z_m(x) \leq L_m^\mu \end{cases} \quad (3)$$

$$\nu_m^{Er}(x) = \delta^r \begin{cases} 0 & \text{if } Z_m(x) \leq L_m^\nu \\ \frac{Z_m(x) - L_m^\nu}{U_m^\nu - L_m^\nu} & \text{if } L_m^\nu \leq Z_m(x) \leq U_m^\nu \\ 1 & \text{if } Z_m(x) \geq U_m^\mu \end{cases} \quad (4)$$

Here, $U_m^\mu = \max(Z_m(x))$, $L_m^\mu = \min(Z_m(x))$, $L_m^\nu = L_m^\mu$, $U_m^\nu = \emptyset \times U_m^\mu$, $\emptyset \in [1, 3]$. Here, $m = 1, 2$ and 3 . Where, $0 \leq \delta^r \leq 1$, Here, $r = 1, 2, \dots, 9$.

- (b) With the use of linear membership and non-membership excluding the hesitation index, the multi-objective fuzzy linear optimization problem (MOFLP) for objectives subject to constraints set can be described using Equations (5)–(11) (Bharti, 2022)

$$\text{Maximiz } \sum (\alpha^r - \beta^r) \tag{5}$$

$$\text{Subjectto } \alpha^r \leq \mu_m^{E^r}(x), \tag{6}$$

$$\beta^r \geq v_m^{E^r}(x), \tag{7}$$

$$\alpha^r + \beta^r \leq 1, \tag{8}$$

$$\alpha^r \geq \beta^r, \tag{9}$$

$$\beta^r \geq 0, \tag{10}$$

$$g_j(x) \leq b_j, x \geq 0, \tag{11}$$

$$m = 1, 2, \dots, p; j = 1, 2, \dots, q$$

Here, α^r signifies degree of acceptance of objective functions, and β^r indicates the degree of rejection of objective functions under sets of constraints.

The objective functions, expressed using Equation (5), under constraints set, were solved using modified simplex method.

The application of the HIFO MOFLP approach for the KRBMC command area resulted in the effective solutions for each of the objective function, along with the crop areas for that command area. The three objectives considered are maximization of NIB, maximization of EG, and minimization of CC. In addition to the suggested optimization technique, it provided the better performance parameters like degree of acceptance and degree of rejection. Table 1 implies the Pay-off Matrix for three objective functions derived from individual LP solutions.

Table 1. Pay-off Matrix from LP solutions for three objective functions.

Type of Objective Function	Objective Function	Net Benefit	Employment Generation	Cost of Cultivation
Maximum	Net benefit, in million Rs	5593.77 ^U	5559.32	1552.55 ^L
Maximum	Employment generation, in 1000 man-days	14,631.25	14,824.02 ^U	5499.49 ^L
Minimum	Cost of cultivation, in million Rs	3457.54 ^L	3454.37	1076.75 ^U

Note: ^U and ^L are the upper and lower values of an objective function.

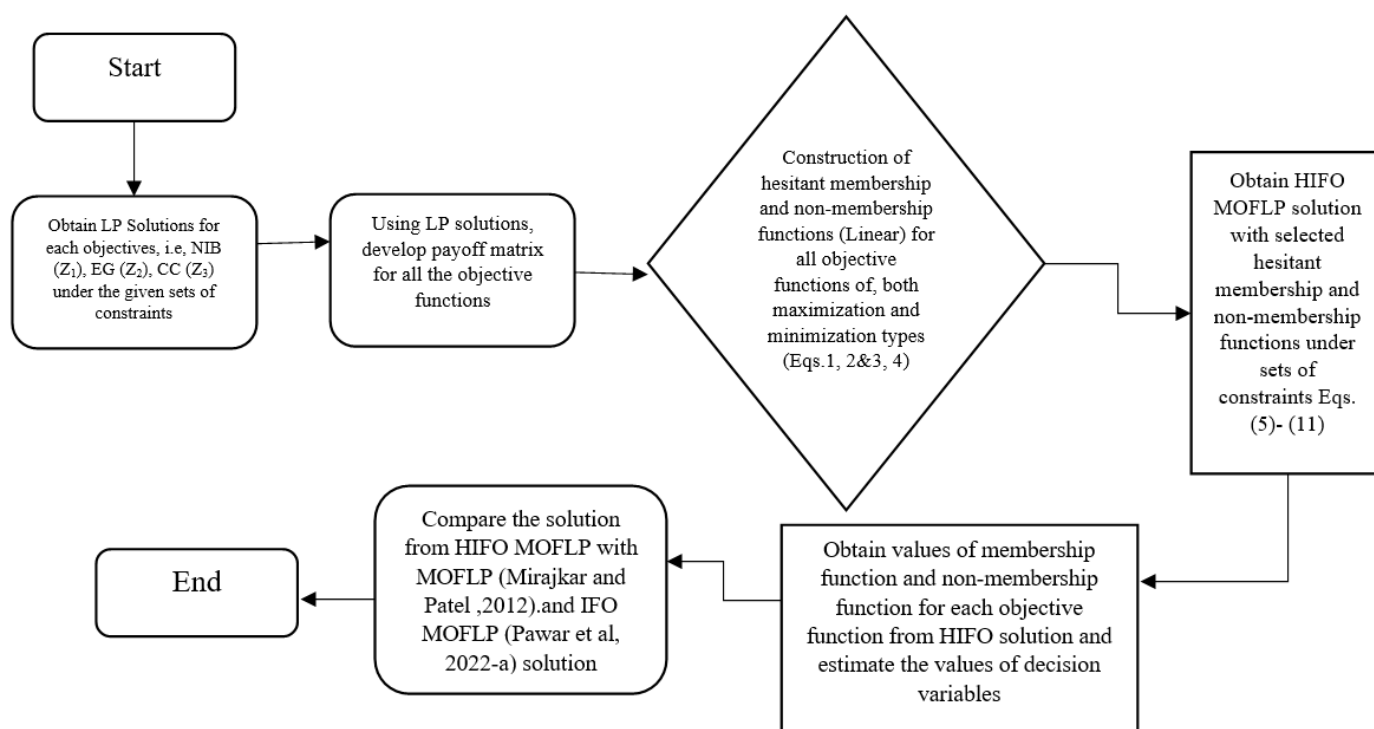


Figure 1. Methodology for development of HIFO MOFLP solution.

4. Results and Discussion

For the selected study region, HIFO techniques from Bharati (2022) have been applied. The performance of the HIFO MOFLP with MOFLP technique, as well as the ideal values for each of the objective functions and the appropriate crop pattern for the command area (Mirajkar and Patel, 2012) and IFO MOFLP approach (Pawar et al. (2022-a), are described in following paragraphs: -

4.1. Sensitivity of δ^r on Hesitant Membership and Non-Membership Function

The values of δ^r , determining the membership and non-membership function, range from 0 to 1.0. The HIFO MOFLP for KRBMC area have been optimized using Equations (5)–(11) for different values of δ^r and equivalent values of α^r and β^r were obtained. The values of α^r and β^r have been estimated to be $\alpha_1 = 0.97, \alpha_2 = 0.98, \alpha_3 = 0.99, \alpha_4 = 0.05, \alpha_5 = 0.03, \alpha_6 = 0.02, \alpha_7 = 0.01, \alpha_8 = 0.01, \alpha_9 = 0.01, \beta_1 = 0.01, \beta_2 = 0.01, \beta_3 = 0.01, \beta_4 = 0.95, \beta_5 = 0.97, \beta_6 = 0.98, \beta_7 = 0.00, \beta_8 = 0.00, \beta_9 = 0.00$. The decision maker must select the value of δ^r for its execution in the command area based on the level of certainty.

4.2. Optimal Cropping Pattern

Here, corresponding to \emptyset (hesitant parameter) = 1, for $\delta^1, \delta^2, \delta^3, \delta^4, \delta^5, \delta^6, \delta^7, \delta^8$ and δ^9 , 0.96, 0.98, 1, 0.96, 0.98, 1, 0.96, 0.98 and 1 respectively, the optimal values of objective functions were found. The recommended modeling approach, suggested by Bharati (2022) resulted the values of NIB, EG and CC as 5572.31 million Rs, 14,287.27 thousand-man days and 3429.99 million Rs. respectively. The consequent values of an individual objective functions with MOFLP and IFO MOFLP were 3585.05 million Rs, 10,189.21 thousand-man days, and 2260.13 million Rs. respectively.

It should be emphasized that HIFO MOFLP shows the higher values of NIB, EG and CC vis-à-vis MOFLP and IFO MOFLP approaches. Hence, HIFO MOFLP solution can be used more reliably with respect to MOFLP and IFO MOFLP approaches.

The optimal values of cropping pattern obtained from HIFO MOFLP model, with $\emptyset = 1$, are included in Table 2, which can be applied in KRBMC command area with greater

degree of certainty. Table 2 indicates areas allocated by the various optimization models used in the current study. The irrigation intensity for the same command area corresponding to aforementioned condition has been found to be 82.05%.

Table 2 shows the optimal cropping pattern values from HIFO MOFLP model for $\emptyset = 1$, which may be implemented in the KRBMC command region with a higher degree of reliability.

Table 2. Areas allocated to different crops (in ha) by HIFO MOFLP model.

Solutions Obtained from Various Models							
Crop No. (i)	Crops	Crisp Linear Programming Individual Solutions			IFO MOFLP	MOFLP	Hesitant Intuitionistic Algorithm
		Net benefit	Employment Generation	Cost of Cultivation	$\alpha = 0.503, \beta = 0.282, \pi = 0.215, S_f = 0.3$	$\lambda = 0.503$	$\alpha_1 = 0.97, \alpha_2 = 0.98, \alpha_3 = 0.99, \alpha_4 = 0.05, \alpha_5 = 0.03, \alpha_6 = 0.02, \alpha_7 = 0.01, \alpha_8 = 0.01, \alpha_9 = 0.01, \beta_1 = 0.01, \beta_2 = 0.01, \beta_3 = 0.01, \beta_4 = 0.95, \beta_5 = 0.97, \beta_6 = 0.98, \beta_7 = 0.00, \beta_8 = 0.00, \beta_9 = 0.00$
Crop areas allocated in ha							
1	Paddy (k)	13,100	16,965	13,100	13,386.38	13,386.38	13,100
2	Juwar/Bajra (k)	11,310	11,310	8100	11,310	11,310	11,310
3	Vegetables (k)	1131	1131	690	1131	1131	1131
4	Wheat (r)	3654	3654	3654	16,965	16,965	3654
5	Vegetables (r)	1120	1120	1120	1120	1120	1120
6	Juwar/ Bajra (r)	10,091	10,091	10,091	10,091	10,091	10,091
7	Paddy (hw)	8145	8145	8145	8145	8145	8145
8	Groundnut (hw)	192	192	192	192	192	192
9	Cotton (ts)	860	860	860	860	860	860
10	Vegetables (ts)	5655	5655	1335	5655	5655	3077.996
11	Sugarcane (p)	38,337.21	37,350.34	4998	17,529.92	17,529.92	39,503
12	Banana (p)	633	633	633	633	633	633
Total		94,228.21	97,106.34	52,918	87,018.3	87,018.3	97,106.34
Irrigation Intensity %		83.30	85.84	46.78	76.92	76.92	82.05
Maximum	Net benefit, in million Rs	5593.77	5559.32	1552.55	3585.05	3585.05	5572.31
Maximum	Employment generation, in 1000 man-days	14,631.25	14,824.02	5499.49	10,189.21	10,189.21	14,287.27
Minimum	Cost of cultivation, in million Rs	3457.54	3454.37	1076.75	2260.13	2260.13	3429.99

Note: hw = hot weather; k = kharif; p = perennial; r = rabi; ts = two-season.

5. Conclusions

The hesitant intuitionistic fuzzy optimization with Multiobjective fuzzy linear programming (HIFO MOFLP) has been implemented for KRBMC of Ukai-kakrapar irrigation project. HIFO approach, given by Bharati (2022), have been used for the selected study area. Finally, the outcomes of HIFO MOFLP were compared with those of MOFLP and IFO MOFLP for the same research area, same sets of constraints and objective functions. The primary conclusions from the current research are as follows: -

- (a) The HIFO MOFLP model, recommended by Bharati (2022), has been applied over KRBMC with compromised optimal values of NIB, EG and CC as 5572.31 million Rs., 14287.27 thousand man-days and 3429.99 million Rs. respectively.
- (b) The optimal cropping pattern, determined by HIFO MOFLP, is shown in Table 2 with an irrigation intensity 82.05%.
- (c) The results obtained from proposed model gives improved results in terms of irrigation intensity and objective function values as compared with Mirajkar and Patel, (2012) and Pawar et al. (2022-a) for the same study area and objective functions.
- (d) The proposed methodology can be applied to whole Ukai-Kakrapar command area while giving due consideration to more number of objectives and corresponding constraints like inflows, outflows of the reservoir, evaporation losses from reservoir etc., which are uncertain in nature. The Hesitant Intuitionistic fuzzy optimization approach can be discovered further when membership function and non-membership functions are non-linear nature.

References

1. Angelov, P.P. Optimization in an intuitionistic fuzzy environment. *Fuzzy Sets Syst.* **1997**, *86*, 299–306. [https://doi.org/10.1016/s0165-0114\(96\)00009-7](https://doi.org/10.1016/s0165-0114(96)00009-7).
2. Atanassov, K.T. Intuitionistic fuzzy sets. *Fuzzy Sets Syst.* **1986**, *20*, 87–96. [https://doi.org/10.1016/s0165-0114\(86\)80034-3](https://doi.org/10.1016/s0165-0114(86)80034-3).
3. Bharati, S.K.; Singh, S.R. Solving Multi Objective Linear Programming Problems Using Intuitionistic Fuzzy Optimization Method: A Comparative Study. *Model. Optim.* **2014**, *4*, 10–15. <https://doi.org/10.7763/ijmo.2014.v4.339>.
4. Bharati, S.K. Hesitant intuitionistic fuzzy algorithm for multiobjective optimization problem. *Oper. Res.* **2022**, *22*, 3521–3547. <https://doi.org/10.1007/s12351-021-00685-8>.
5. Chen, F.; Qiu, X.; Alattas, K.A.; Mohammadzadeh, A.; Ghaderpour, E. A New Fuzzy Robust Control for Linear Parameter-Varying Systems. *Mathematics* **2022**, *10*, 3319. <https://doi.org/10.3390/math10183319>.
6. Ebrahimnejad, A.; Verdegay, J.L. A new approach for solving fully intuitionistic fuzzy transportation problems. *Fuzzy Optim. Decis. Mak.* **2018**, *17*, 447–474. <https://doi.org/10.1007/s10700-017-9280-1>.
7. Garai, A.; Roy, T.K. Intuitionistic fuzzy optimization: Usage of hesitation index. *NIFS* **2013**, *19*, 60–68. <https://doi.org/10.24297/ijct.v10i4.3248>.
8. Hashemi, H.; Bazargan, J.; Mousavi, S.M. A Compromise Ratio Method with an Application to Water Resources Management: An Intuitionistic Fuzzy Set. *Water Resour. Manag.* **2013**, *27*, 2029–2051. <https://doi.org/10.1007/s11269-013-0271-x>.
9. Jafarian, E.; Razmi, J.; Baki, M. A flexible programming approach based on intuitionistic fuzzy optimization and geometric programming for solving multi-objective nonlinear programming for solving multi-objective nonlinear programming problems. *Expert Syst. Appl. Int. J.* **2018**, *93*, 245–256. <https://doi.org/10.1016/j.eswa.2017.10.030>.
10. Li, M.; Fu, Q.; Singh, V.P.; Ma, M.; Liu, X. An intuitionistic fuzzy multi-objective non-linear programming model for sustainable irrigation water allocation under the combination of dry and wet conditions. *J. Hydrol.* **2017**, *555*, 80–94. <https://doi.org/10.1016/j.jhydrol.2017.09.055>.
11. Mirajkar, A.B.; Patel, P.L. A fuzzy based optimal irrigation planning for kakrapar right bank canal command area, gujarat, india. *ISH J. Hydraul. Eng.* **2011**, *17*, 43–50. <https://doi.org/10.1080/09715010.2011.10515059>.
12. Mirajkar, A.; Patel, P. Optimal irrigation planning using multi-objective fuzzy linear programming models. *ISH J. Hydraul. Eng.* **2012**, *18*, 232–240. <https://doi.org/10.1080/09715010.2012.721661>.
13. Mirajkar, A.B.; Patel, P.L. (2016). Multi-objective Two-Phase Fuzzy Optimization Approaches in Management of Water Resources. *J. Water Resour. Plan. Manag.* **2016**, *142*, 1–16. [https://doi.org/10.1061/\(ASCE\)WR.1943-5452.0000682](https://doi.org/10.1061/(ASCE)WR.1943-5452.0000682).
14. Pawar, S.V.; Patel, P.L.; Mirajkar, A.B. Intuitionistic fuzzy approach in multi-objective optimization for KRBMC irrigation system, India. *ISH J. Hydraul. Eng.* **2022**, *28*, 463–470. <https://doi.org/10.1080/09715010.2020.1781700>.
15. Pawar, S.; Patel, P.L.; Mirajkar, A. Intuitionistic fuzzy optimization approach in optimal irrigation planning of Ukai-Kakrapar irrigation project, India. *ISH J. Hydraul. Eng.* **2022**, *Early View*. <https://doi.org/10.1080/09715010.2022.2052988>.
16. Sahoo, B.; Lohani, A.K.; Sahu, R.K. Fuzzy Multiobjective and Linear Programming Based Management Models for Optimal Land-Water-Crop System Planning. *Water Resour. Manag.* **2006**, *20*, 931–948. <https://doi.org/10.1007/s11269-005-9015-x>.

Disclaimer/Publisher's Note: The statements, opinions and data contained in all publications are solely those of the individual author(s) and contributor(s) and not of MDPI and/or the editor(s). MDPI and/or the editor(s) disclaim responsibility for any injury to people or property resulting from any ideas, methods, instructions or products referred to in the content.