

ECWS-7
2023

7th International Electronic Conference on Water Sciences
Adaptive Water Resources Management in an Era of Changing Climatic,
Environmental and Social Conditions



“Bridging the gap between science and policy: a prerequisite for effective water governance”

Karasani M., Latinopoulos D., Ioannidou N., Spiliotis M. & Kagalou I.

Department of Civil Engineering, Democritus University of Thrace (Greece)

15–30 Mar 2023

Research aim

“Intensive multi-stakeholder consultations required for effective, equitable and sustainable water governance”



Reflected in Eu Water Policies (WFD 2000/60/EC)

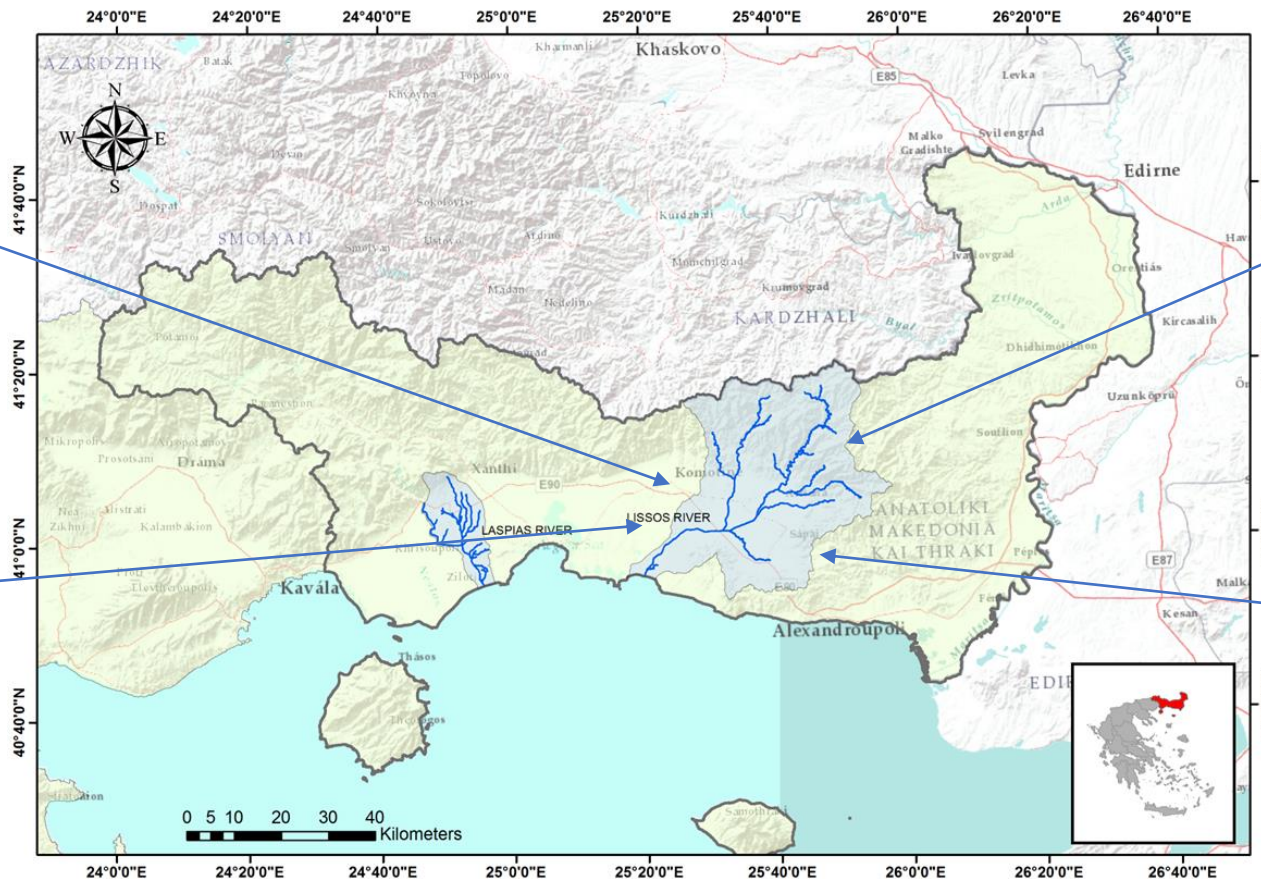
Greek River Basins lack of participatory management (!)

Aim of the paper : to outline the participatory bottom-up approach for Lissos* river basin’s management, having as supreme goal the bridging between science and policy.

**To our knowledge, this is the first participatory assessment of local river basin being applied in this basin.*

Materials & Method

Study area: Lissos River Basin (Rhodope, Thrace, Greece)



as a lesser
researched
river

several
anthropogenic
pressures

of primary
importance
for the local
community

of higher
trophic state
in segmented
hydrological
network

(Bakalakov et al., 2022)

Materials & Method

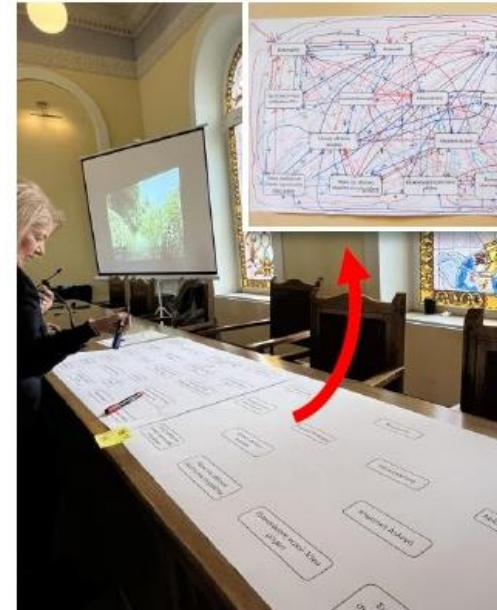
Methodology stages

- **Stakeholder mapping** (criteria of equal representation & the gender equality)
 - ✓ list of stakeholders
 - ✓ three groups invited : 1) farmers 2) practitioners & 3) experts
- **Questionnaires development**
 - ✓ based on a SWOT-PEST analysis & monitoring results
 - ✓ set of 12 questions on the water uses, the river pressures, the water governance & possible solutions
- **Workshop process**
 - ✓ Two sessions:
 - A. A formal briefing of the monitoring findings
 - B. Stakeholders participate in two exercises in a free and open manner

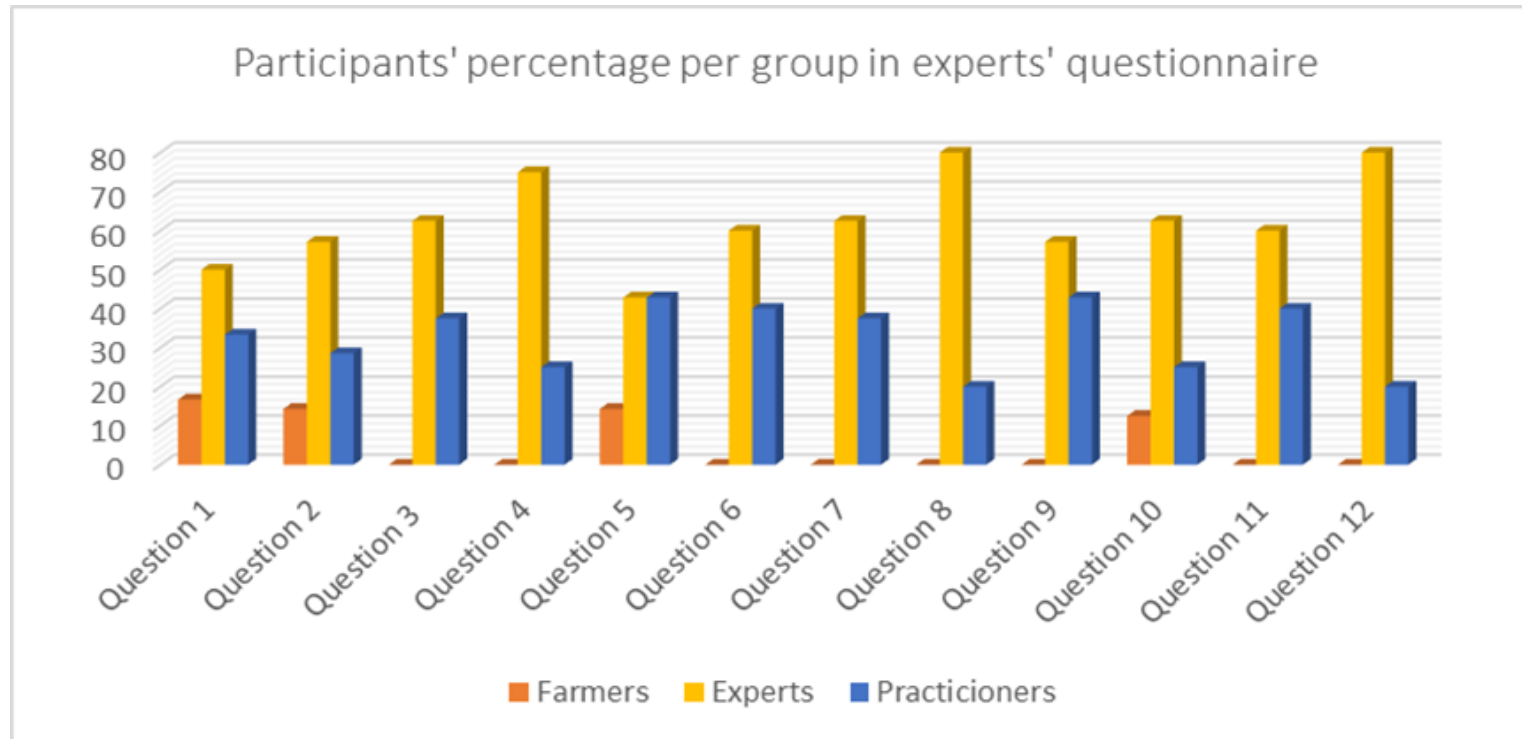
Materials & Method

Methodology stages

- **Workshop process**
 - ✓ Exercise 1: Stakeholders answered questions by placing a post-it in 3 big panels
 - ✓ Exercise 2: Stakeholders were asked willingly to answer the questions of the other 2 groups
- **Material analysis**
 - ✓ Post-it from panels were transferred to a database with the qualitative details (discussion notes)
- **Follow-up**

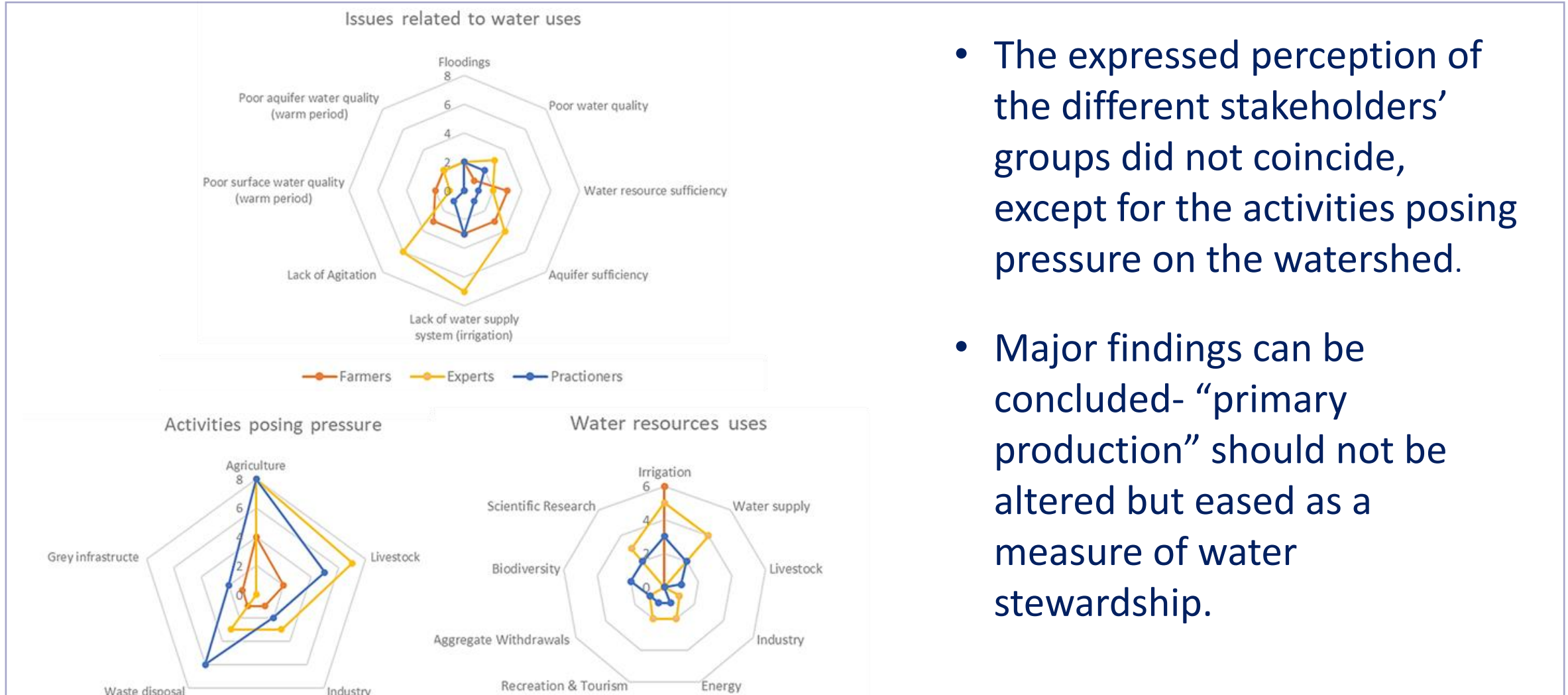


Preliminary Results



Given answer per group in experts' questionnaire, indicative of participation and interaction among stakeholder groups (Exercise 2)

Preliminary Results



- The expressed perception of the different stakeholders' groups did not coincide, except for the activities posing pressure on the watershed.
- Major findings can be concluded- “primary production” should not be altered but eased as a measure of water stewardship.

Discussion

- This workshop aiming to bridge the gap between science and policy, successfully managed to take a “snapshot” of stakeholders’ perspective on the management of Lissos basin.
- The findings seem to be applicable in decision-making for strategic design and measures implementation, incorporating information, based also on local knowledge of great value that could not be gained otherwise.



Join us

“Science should be open to public”

www.eye4water.com



Produced for Eye4Water project, MIS 5047246, implemented under the action: "Support for Re-search Infrastructure and Innovation" by the Operational Program "Competitiveness, Entrepreneurship and Innovation" in the framework of the Co-financed by Greece and the European Union-European Regional Development Fund.

<p>European Union European Structural and Investment Funds</p>	<p>HELLENIC REPUBLIC MINISTRY OF DEVELOPMENT AND INVESTMENTS SPECIAL SECRETARIAT FOR ERDF & CF PROGRAMMES MANAGING AUTHORITY OF "COMPETITIVENESS" PROGRAMME</p>	<p>ΕΡΑΝΕΚ 2014-2020 OPERATIONAL PROGRAMME COMPETITIVENESS ENTREPRENEURSHIP INNOVATION</p>	<p>ΕΣΠΑ 2014-2020 ανάπτυξη - εργασία - αλληλεγγύη Partnership Agreement 2014 - 2020</p>
Co-financed by Greece and the European Union			