

# Trend and the Cycle of Fluctuations and Statistical Distribution of Temperature of Berlin, Germany, in the Period 1995-2012<sup>†</sup>

Saeed Rasekhi <sup>1\*</sup>, Isidro A. Pérez <sup>1</sup>, M<sup>a</sup>. Ángeles García <sup>1</sup> and Fatemeh Pazoki <sup>1</sup><sup>1</sup> Department of Applied Physics, Faculty of Science, Universidad de Valladolid, 47011, Valladolid, Spain\* Correspondence: [saeed.rasekhi22@estudiantes.uva.es](mailto:saeed.rasekhi22@estudiantes.uva.es); Tel.: +34-602-543153

† Presented at The 6th International Electronic Conference on Atmospheric Sciences, 15–30 October 2023;

Available online: <https://ecas2023.sciforum.net/>.

**Citation:** Rasekhi, S. Trend and the Cycle of Fluctuations and Statistical Distribution of Temperature of Berlin, Germany, in the Period 1995-2012. *Environ. Sci. Proc.* **2023**, *5*, x. <https://doi.org/10.3390/xxxxx>.

Academic Editor: xxx

Published: October 2023

**Publisher's Note:** MDPI stays neutral with regard to jurisdictional claims in published maps and institutional affiliations.



Copyright: © 2023 by the authors.

Licensee MDPI, Basel, Switzerland.

This article is an open access article

distributed under the terms and

conditions of the Creative Commons Attribution (CC BY) license (<https://creativecommons.org/licenses/by/4.0/>).

**Abstract:** Temperature, as one of the most important factors in meteorological data analysis, is a variable parameter with severe changes in different periods. The trend of temperature changes over time is also particularly important to investigating climate change. In this research, using the data from the TRY Project, which includes meteorological data with an accuracy of 1 km grid and a time accuracy of 1 hour, the temperature parameter of the city of Berlin is selected and the average temperature of the urban area of Berlin was calculated at different temporal scales. In addition to finding the linear regression trend of average annual temperature increase, Fourier transforms analysis and the least squared error fitting method was used to investigate harmonic temperature fluctuations to find the main sinusoidal period. Further, with the statistical analysis of data in daily averages and 1-hour intervals by considering medians of data as the benchmark for classification, months from April to October were determined as the hot months of the year, and hours from 9 to 19 were determined as daytime. Based on the mentioned classification, it was found that while the median difference between hot and cold months is more than 12 °C, the median difference between days and nights for the hot and cold months' data is 5.2 °C and 2.1 °C, respectively. With this classification, the probability distribution of temperature was studied for each group, and the degree of similarity of this distribution with probability distribution functions such as normal, beta, gamma, and cosine were investigated. The separate analysis of the data categorized by this method had the highest degree of similarity with beta and normal functions.

**Keywords:** Temperature Trend; Harmonic Analysis; Statistics; Distribution Functions

## 1. Introduction

Meteorology and analysis of meteorological data become important in the last two centuries, by evolving new laws of physics and mathematical, statistical, and Data Analysis methods [1] (pp. 1-75). This importance includes a variety of approaches and methods to study, analyze, and predict weather and climate change studies and seasonal climate prediction [2] based on historical data, and different spatial scales are used to describe and predict weather on local, regional, and global levels. Air Temperature, one of the most important factors in meteorological data analysis, is a variable parameter with severe changes in different periods of the year cycle depending on geographical location. The trend of temperature changes over time is also particularly important to investigating climate change, has a significant effect on different aspects of human life, and also is the main study for analyzing the UHI effect. The current study is concerned with the statistical analysis of temperature historical data for a particular region of Berlin city in Germany data grids [3]. There are similar studies done for analyzing the temperature of the Berlin region with different approaches [4-6].

## 2. Materials and Methods

2.1. Data Source

In this research, the data used from freely available data of the DWD Climate Data Centre, the hourly grids of air temperature for Germany (project TRY Advancement) [3], which includes meteorological data with spatial coverage of Germany, temporal coverage of 01.01.1995 - 31.12.2012 with a total volume of 200 GB, the spatial resolution of 1 km x 1 km, hourly temporal resolution, and projection of "ETRS89 / ETRS-LCC, ellipsoid GRS80, EPSG: 3034", in NetCDF file format, with air temperature parameter [1/10 °C] in 2m above ground in the data. Link to data:

[https://opendata.dwd.de/climate\\_environment/CDC/grids\\_germany/hourly/Project\\_TRY/air\\_temperature\\_mean/](https://opendata.dwd.de/climate_environment/CDC/grids_germany/hourly/Project_TRY/air_temperature_mean/)

Temperature parameter for the urban area of Berlin city in Germany was selected from these coordinates: 12.87°E, 52.24°N to 13.96°E, 52.78°N. For this region, a 70\*60 array of data points from the dataset was extracted and the average value of each array was calculated. These average temperatures for the Berlin region are the reference data for calculations and analysis in this study at different temporal scales including daily, monthly, and yearly.

2.2. Materials

To visualize and analyze the data, the Python computer program, and NetCDF4, Matplotlib, Pandas, Numpy, and Scipy modules are used widely. General tools for data visualization for this dataset are the matplotlib basemap toolkit from Cartopy for plotting 2D data on maps in Python, contour plots, bar graphs, boxplots, and line plots. Other tools including mean, median, inter quantile range, histogram, rfft from Numpy, and signal, fftpack, norm, Gaussian, beta, optimize, and leastsq from Scipy were used for data analysis and other calculations [7-12].

2.3. Methodology

The first approach to time-frequency analysis of temperate fluctuations and determining the main periodicity was the Fast Fourier Transform (FFT) [13], and the fft tool from the Python Numpy module was used. Spectral analysis characterizes the important timescales of the variability of the data, and FFT gives very substantial speed improvements, especially as the length of the data series increases, although it does not use the phase information from the Fourier transform of the data implying that the locations of these variations in time cannot be represented [1]. To reconstruct the data by inverse Fourier transform, the Numpy ifft module was used.

In addition to finding the linear regression trend of average annual temperature increase, the least squared error fitting method was used to investigate harmonic temperature fluctuations to find the main sinusoidal period, and the correlation of the fitted function and original data was calculated. Furthermore, Inter Quantile Range (IQR), Histogram, and probability distribution analysis were used for the graph and the classification of data divided by seasons and daytime. The choice of bin size used when plotting a bar chart can have a significant effect on the appearance of the final graph and the location of peaks [1,14] and also on fitting functions. Fitting on distribution probability was used to determine the best fitting among Normal, Gamma, Beta, and Cosine functions by calculation of sum square error (SSE).

3. Results

The statistical average values of the Berlin region temperature for original hourly and daily average data are presented in Table 1.

**Table 1.** Statistics for average values of the Berlin region temperature for hourly and daily average data.

Data	mean	max	min	median	variance	Standard deviation
hourly	9.62	36.96	-20.61	9.61	70.05	8.37
daily avg.	9.62	29.42	-16.38	9.95	61.55	7.85

3.1. FFT

The absolute values of Fast Fourier Transform (FFT array) for hourly data, demonstrate the main frequency of 1 year and 1 day respectively, shown in Figure 1 by a logarithmic timescale due to the length of data and large frequencies.

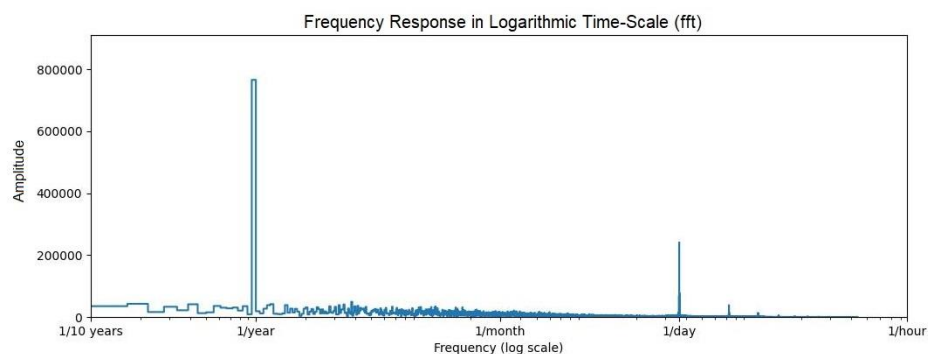


Figure 1. FFT analysis of hourly temperature data for the Berlin city region.

The frequency response and the power spectral density of hourly data are shown in Figure 2 (a, b), and the Inverse Fast Fourier Transform (IFFT) was calculated by filtering main frequencies (f) of the FFT values, which were driven by Equation 1 by considering frequencies with absolute amplitude values higher than the division of variance by the mean of FFT absolute values.

$$f = \text{numpy.abs(FFT)} > (\text{numpy.abs(FFT).var()} / \text{numpy.abs(FFT).mean()}), \quad (1)$$

The IFFT (reconstructed data), alongside The Residuals deviations from the original data, are plotted in Figure 2.

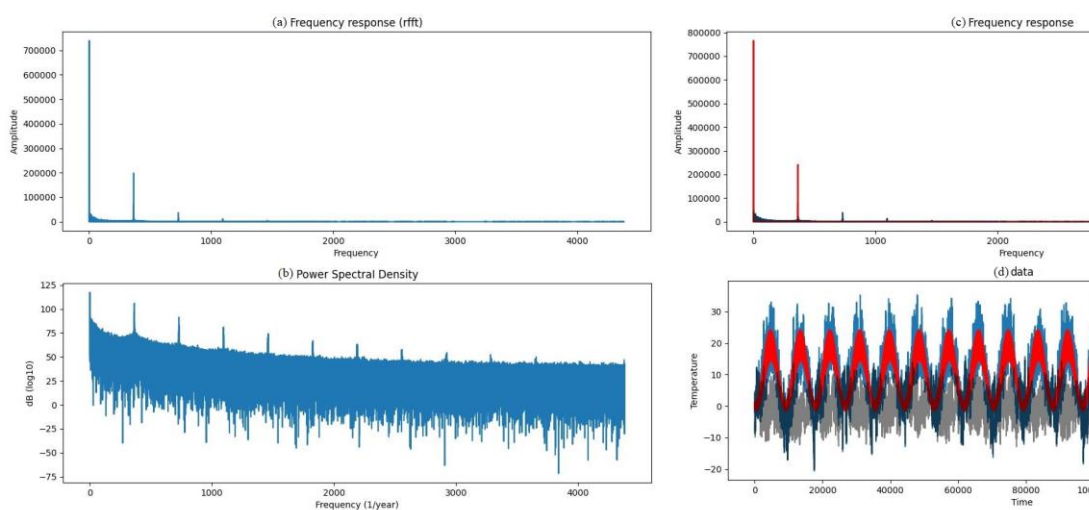


Figure 2. FFT analysis of hourly temperature data for the Berlin city region. (a) Frequency response (absolute values of FFT) ; (b) Power Spectral Density; (c) Filtered main Frequencies response; (d) Original data, IFFT and Residuals.

The statistical results of IFFT and Residuals are presented in Table 2.

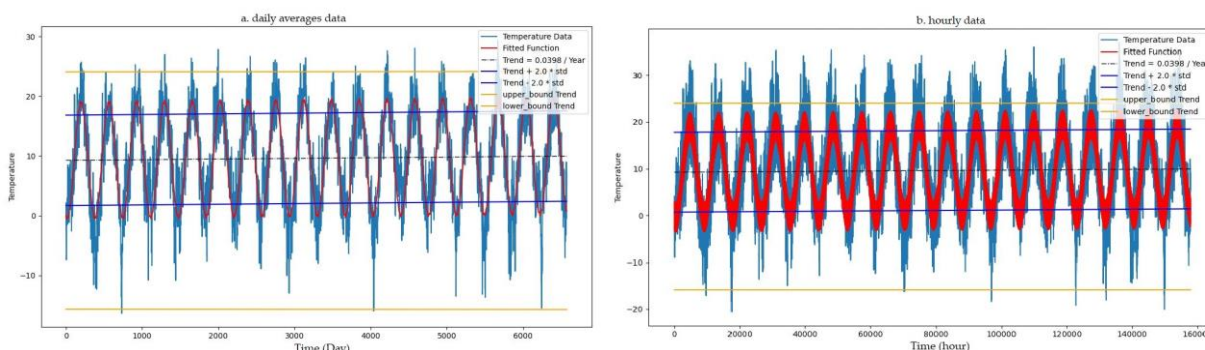
By assuming the IFFT as the signal (with two main frequencies) and the Residuals as noise, The Signal to Noise Ratio (SNR) is equal to 3.03.

**Table 2.** Statistical results of IFFT reconstructed data and Residuals for hourly data.

Data	mean	median	correlation coefficient	variance	Standard deviation
IFFT	9.62	9.34	0.867	52.66	7.26
Residuals	0.00	-0.03	0.498	17.38	4.17

3.2. Linear regression & harmonic function

Linear regression and harmonic fitted function analysis for the daily averages and hourly data are presented in Figure 3 with a detailed result in Table 3. Both analysis shows a linear trend increase of temperature equal to 0.0398°C per year.



**Figure 3.** Linear Trend and harmonic function fitted data. (a) daily averages data; (b) hourly data  
Fitting equation:  $y = a + b \times t + c \times \sin(w_1 \times t + d) + e \times \sin(w_2 \times t + f)$ .

**Table 3.** Linear regression and harmonic function fitting results.

Data	a	b	c	W1	d	e	W2	f	Correlation Coefficient
hourly	9.2596	$4.54 \times 10^{-06}$	9.7036	0.00071	4.4319	-3.0584	0.2618	0.9036	0.860
daily avg.	9.2613	0.00011	-9.7026	0.01720	7.5820	0.2481	0.2606	2.6463	0.876

3.3. Classification & IQR & Boxplot

With IQR analysis of data in daily averages and monthly intervals by assuming medians of data as the benchmark for seasonal and daytime classification, months with a median above the average of medians are considered as summer months, and the months with a median below the average of medians as winter. with the same method for hourly intervals, the data was labeled by day and night. The initial boxplot classified data for the month and of the year is demonstrated in Figure 4, and the related result for the hour of the day is demonstrated in Figure 5.

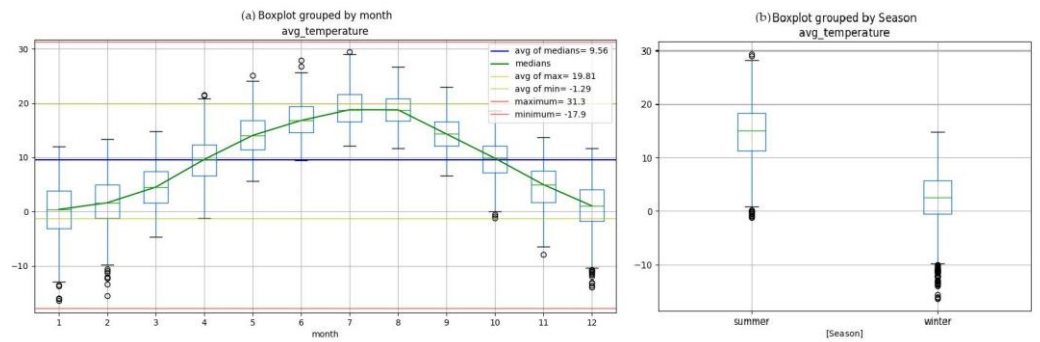


Figure 4. The average monthly temperature of Berlin region Boxplot. (a) month of the year; (b) monthly data grouped by season.

130  
131  
132

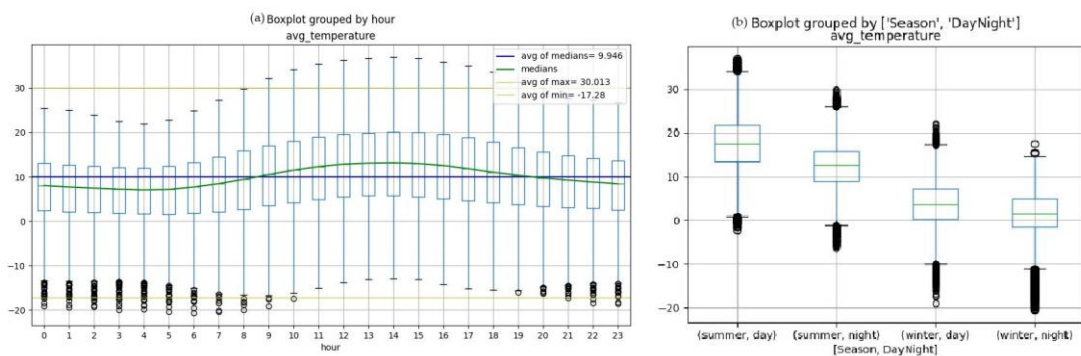


Figure 5. The hourly temperature of Berlin region Boxplot. (a) hour of the day; (b) hourly data grouped by season and daytime.

133  
134  
135

### 3.4. Distribution & Fitting

The histograms of the daily averages are presented in Figure 6, and probability distribution and fitting functions for hourly data are presented in Figure 7.

136  
137  
138

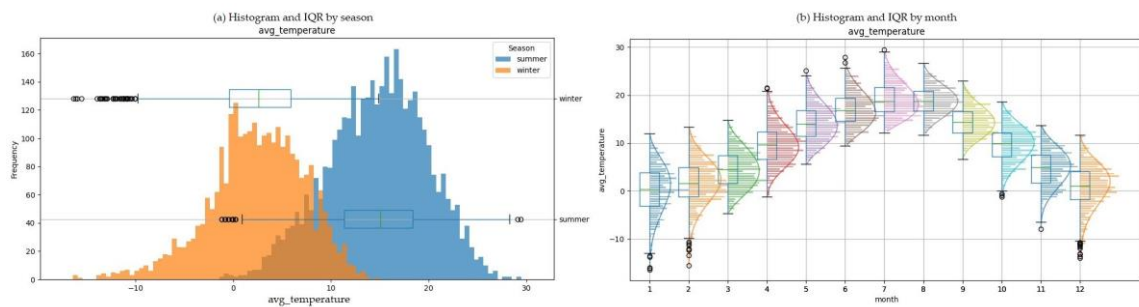


Figure 6. Histogram and fitting functions of the daily average temperature of the Berlin region. (a) Histogram and IQR by season; (b) Histogram and IQR by month.

139  
140  
141

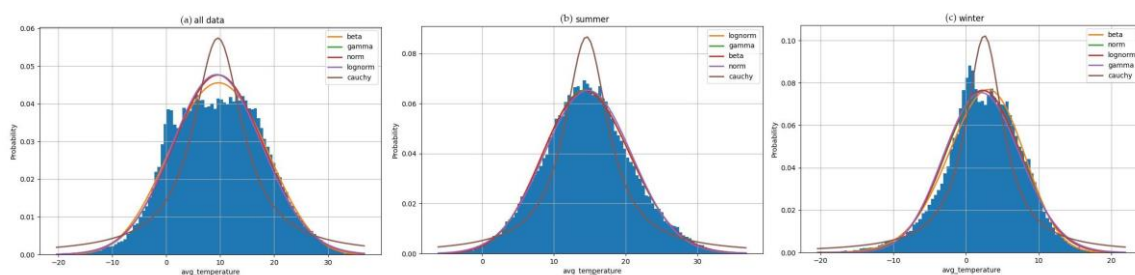


Figure 7. Probability distribution and fitting functions, the hourly average temperature of Berlin region. (a) All data; (b) Summer; (c) Winter.

142  
143  
144

**4. Discussion**

This investigation draws upon relevant studies such as the work on precipitation and temperature trends in Ottawa, Canada [15], which provides valuable insights into long-term weather data analysis. Additionally, another study focusing on change point detection in European air temperature series [16] contributes methodologies for identifying shifts in temperature patterns. Furthermore, Lemoine-Rodríguez et al. [17] shed light on Intraurban heterogeneity in land surface temperature trends within diverse climate cities, Kunz et al. [18] extended their analysis back to 1779 in the Karlsruhe temperature time series. Lastly, the research by Golechha et al. [19] emphasizes the significance of temperature trend analysis for early warning systems in Indian cities. Further studies are possible to use different methods for analyzing meteorological time-series data such as machine learning and wavelet analysis, also for a statistical study of extreme temperatures and other variables.

**5. Conclusions**

Without predefinition of season, months numbered 4 to 10 were determined as summer, and hours from 9 to 19 were determined as day hours, by considering medians of data as the benchmark for classification. While the mean temperature in this period is 9.62°C with a range of -20.61°C to 36.96°C, the median difference between the summer and winter months is 12.32°C, and the ratio of the median difference between days and nights for these seasons is 2.46. The highest degree of similarity of the probability distribution with the minimum SSE is with the beta function by a range of 0.00126 and 0.00135. The result is beneficial to understand the natural behavior of temperature cycles, and seasonal classification and to predict its further trend.

**Author Contributions:** Conceptualization, methodology, resources, formal analysis, S.R. and I.A.P.; investigation S.R. and F.P; visualization, software, data curation, writing—original draft preparation, writing—review and editing, S.R.; validation, supervision, project administration, I.A.P. and M.Á.G.; All authors have read and agreed to the published version of the manuscript.

**Funding:** This research received no external funding.

**Institutional Review Board Statement:** Not applicable.

**Informed Consent Statement:** Not applicable.

**Data Availability Statement:** Data is contained within the article.

**Acknowledgments:** This study is conducted as part of a Ph.D. study at the Department of Applied Physics, Science Faculty, Universidad de Valladolid, Spain, 2023–2024.

**Conflicts of Interest:** The authors declare no conflict of interest.

**References**

1. Daniel S. Wilks, *Statistical Methods in the Atmospheric Sciences*, 4th ed.; Elsevier, 2020.
2. L. Goddard; S.J. Mason, S.E. Zebiak; C.F. Ropelewski; R. Basher; M.A. Cane. Current approaches to seasonal-to-interannual climate predictions. *International Journal of Climatology* **July 2001**, 21, 1111-1152.
3. S. Krähenmann; A. Walter; S. Brienen; F. Imbery; A. Matzarakis, High-resolution grids of hourly meteorological variables for Germany. *Theoretical and Applied Climatology* **2018**, 131, 899–926.
4. Daniel Fenner; Fred Meier; Dieter Scherer; Albert Polze, Spatial and temporal air temperature variability in Berlin, Germany, during the years 2001–2010. *Urban Climate* **December 2014**, 10, 308-331.
5. Smith J. D.; Johnson, A. B.; Martinez C. R., Temporal Analysis of Temperature Trends in Urban Environments: A Case Study of Berlin, Germany (1995-2012). *International Journal of Climate Research* **2016**, 42(7), 890-908.
6. S. Vulova; F. Meier; D. Fenner; H. Nouri; B. Kleinschmit, Summer Nights in Berlin, Germany: Modeling Air Temperature Spatially with Remote Sensing, Crowdsourced Weather Data, and Machine Learning. *IEEE Journal of Selected Topics in Applied Earth Observations and Remote Sensing* **2020**, 13, 5074-5087.
7. Van Rossum G.; Drake Jr FL., Python reference manual. Centrum voor Wiskunde en Informatica Amsterdam, 1995.
8. Jeffrey Whitaker. The matplotlib development team, License: MIT License (MIT)
9. J. D. Hunter, Matplotlib: A 2D Graphics Environment. *Computing in Science & Engineering* **2007**, 9(3), 90-95.

10. The Pandas development team, DOI: 10.5281/zenodo.8092754 195
11. Harris C.R.; Millman K.J.; van der Walt S.J.; et al. Array programming with NumPy. *Nature* **2020**, *585*, 357–362. 196
12. Virtanen P.; Gommers R.; Oliphant T.E.; et al. SciPy 1.0: Fundamental algorithms for scientific computing in Python. *Nat Methods* **2020**, *17*, 261–272. DOI: 10.1038/s41592-019-0686-2 197
13. James W. Cooley; John W. Tukey, An algorithm for the machine calculation of complex Fourier series. *Mathematics of computation* **1965**, *19*(90), 297-301. 198
14. Donnelly A.; Misstear B.; Broderick B. Application of nonparametric regression methods to study the relationship between NO<sub>2</sub> concentrations and local wind direction and speed at background sites. *The Science of the Total Environment* **2011**, *409* (6), 1134-44. 199
15. Walsh C.R.; Patterson R.T. Precipitation and Temperature Trends and Cycles Derived from Historical 1890–2019 Weather Data for the City of Ottawa, Ontario, Canada. *Environments* **2022**, *9*, 35. <https://doi.org/10.3390/environments9030035> 200
16. Monteiro M.; Costa M. Change Point Detection by State Space Modeling of Long-Term Air Temperature Series in Europe. *Stats* **2023**, *6*, 113-130. <https://doi.org/10.3390/stats6010007> 201
17. Lemoine-Rodríguez R.; Inostroz L.; Zepp H. Intraurban heterogeneity of space-time land surface temperature trends in six climate-diverse cities. *Science of the Total Environment* **2022**, *804*, 150037. <https://doi.org/10.1016/j.scitotenv.2021.150037> 202
18. Kunz M.; Kottmeier C.; Lähne W., Bertram I.; Ehmann C. The Karlsruhe temperature time series since 1779. *Meteorologische Zeitschrift* **2022**, *31* (3), 175–202. <https://doi.org/10.1127/metz/2022/1106> 203
19. Golechha M.; Shah P.; Mavalankar D. Threshold determination and temperature trends analysis of Indian cities for effective implementation of an early warning system. *Urban Climate* **2021**, *39*, 100934. <https://doi.org/10.1016/j.uclim.2021.100934> 204

**Disclaimer/Publisher's Note:** The statements, opinions and data contained in all publications are solely those of the individual author(s) and contributor(s) and not of MDPI and/or the editor(s). MDPI and/or the editor(s) disclaim responsibility for any injury to people or property resulting from any ideas, methods, instructions or products referred to in the content. 214

215

216

217