

Evaluation of the Hypolipidemic Properties of Cocoa Shell after Simulated Digestion Using In Vitro Techniques and a Cell Culture Model of Non-Alcoholic Fatty Liver Disease [†]

Cheyenne Braojos ^{1,2,*}, Vanesa Benitez ^{1,2}, Miguel Rebollo-Hernanz ^{1,2,*}, Silvia Cañas ^{1,2}, Yolanda Aguilera ^{1,2}, Silvia M. Arribas ³ and Maria A. Martin-Cabrejas ^{1,2}

¹ Department of Agricultural Chemistry and Food Science, Universidad Autónoma de Madrid, 28049 Madrid, Spain; email (V.B.); email (S.C.); email (Y.A.); email (M.A.M.-C.)

² Institute of Food Science Research, CIAL (UAM-CSIC), 28049 Madrid, Spain

³ Department of Physiology, Universidad Autónoma de Madrid, 28029 Madrid, Spain; email

* Correspondence: cheyenne.braojos@uam.es (C.B.); miguel.rebollo@uam.es (M.R.-H.)

[†] Presented at the 1st International Electronic Conference on Food Science and Functional Foods, 10–25 November 2020. Available online: https://foods_2020.sciforum.net/.

Submitted: date; Accepted: date; Published: date

Abstract: Obesity is closely associated with the increasing prevalence of non-alcoholic fatty liver disease (NAFLD). Due to the lack of proper pharmacological treatments for NAFLD, finding novel ingredients is necessary to reduce its incidence. Cocoa shell is a cocoa by-product verified as a safe ingredient and a potential source of health-promoting compounds. Hence, this study's main objective was to evaluate, after an in vitro simulated digestion, the hypolipidemic properties of the residual fraction of cocoa shell flour and the biological activity of the digested fractions of cocoa shell flour and extract in HepG2 cells. An in vitro static digestion (INFOGEST) of cocoa shell flour was used to establish the residual fraction's capacity to bind cholesterol and bile salts and inhibit lipase. The results showed that digestion promoted the ability to bind cholesterol and bile salts of residual fraction from cocoa shell up to 65.2% and 90.5%. Moreover, digestion improved (1.6-fold, $p < 0.05$) the ability to inhibit lipase activity. The digested fractions of the flour and extract from the cocoa shell (50–250 $\mu\text{g/mL}$) significantly ($p < 0.05$) reduced the accumulation of fat (17–42%), triglycerides (9–38%), and cholesterol (11–54%) in HepG2 cells after NAFLD induction with palmitic acid (500 μM). In conclusion, digestion positively impacted the hypolipidemic properties of cocoa shells in vitro and enhanced its biological activity in cell culture models. Since cocoa shells might be used as a safe novel ingredient to prevent hyperlipidemia and regulate lipid metabolism, future animal and clinical investigations will be necessary to confirm the effects observed.

Keywords: cocoa by-products; cocoa shell; gastrointestinal digestion; hypolipidemic; hypocholesterolemic; non-alcoholic fatty liver disease

1. Introduction

Obesity is defined as an excessive accumulation of adipose tissue. It is closely associated with multiple metabolic risk factors for cardiovascular disease, including insulin resistance, diabetes, dyslipidemia, and a spectrum of liver abnormalities, known as non-alcoholic fatty liver disease (NAFLD) [1]. NAFLD has become one of the leading causes of chronic liver disease, representing the hepatic manifestation of the metabolic syndrome, ranging from simple steatosis (i.e., fat accumulation in more than 5% of the hepatocytes) to necroinflammation and fibrosis, leading to non-alcoholic steatohepatitis (NASH), which often results in progression to cirrhosis, liver failure and

hepatocellular carcinoma [2,3]. Many pharmacological treatments have been proposed for the management of NAFLD. However, none of them has been approved in clinical use currently [4]. Due to the lack of proper pharmacological treatments for NAFLD, modifying the diet to prevent obesity and its comorbidities is the principal candidate. In this context, finding novel ingredients that may help us to reduce the incidence of these disorders is necessary.

During cocoa bean processing, approximately 90% is discarded as cocoa by-products, which have a high potential for developing new products. The cocoa shell is the tegument that covers the cocoa shell. It is obtained during the cocoa bean roasting process, constituting about 10–17% of the total cocoa bean weight [5]. Cocoa shell is a rich source of carbohydrates (62%) and protein (10–27%), as well as dietary fiber (DF) (59%) and valuable bioactive compounds (theobromine, caffeine, phenolic compounds, etc.), which could be used as an ingredient in the food industry among other industries [6,7]. Furthermore, cocoa shell has been recently validated as a potential safe ingredient. It is a potential source of nutrients and health-promoting compounds used as nutraceuticals to manage chronic diseases [7]. Phytochemicals from cocoa shells have been associated with the regulation of biomarkers of metabolic syndrome (lipid accumulation, inflammation, oxidative stress, and insulin resistance) [8]. Therefore, this study's main objective was to evaluate, after an *in vitro* simulated digestion, the hypolipidemic properties of the residual fraction of cocoa shell flour and the biological activity of the digested fractions of cocoa shell flour and extract in HepG2 cells.

2. Materials and Methods

2.1. Materials

Dulbecco's Modified Eagle Medium low glucose (1000 mg/mL) (DMEM) and 0.25% trypsin-EDTA were purchased from GE Healthcare Life Sciences. *o*-Phthalaldehyde, furfural, bile salts, lipase, Tween® 20, Bovine Serum Albumin (BSA), Palmitic Acid (PA), 2',7'-Dichlorofluorescein diacetate (DCFDA), and Oil Red O were purchased from Sigma-Aldrich. All other chemicals and reagents were obtained from Panreac unless otherwise specified.

2.2. Cocoa Flour and Aqueous Extracts Preparation

The cocoa shell was provided by AORA Health (Spain). Cocoa shell flour was obtained after milling and cocoa shell aqueous extracts described by Rebollo-Hernanz et al. [9].

2.3. INFOGEST Static *In Vitro* Simulation Digestion

Digestions were carried out based on preliminary and optimized protocols described by Brodkorb et al. [10]

2.4. Cholesterol Binding Capacity

For the measure of the residue's cholesterol-binding capacity, fresh egg yolks were diluted 1:10 (*v/w*), and the dilution was emulsified, divided, and adjusted to pH 2.0 and pH 7.0. Samples (0.1 g) were mixed with the diluted egg yolk (2 mL) and incubated with agitation (2 h, 37 °C), followed by an 800 g centrifugation (15 min). Consecutively, samples supernatants (0.1 mL) were mixed with 0.6 mL of pure acetic acid, 0.2 mL of H₂SO₄ (96%), and 0.1 mL of *o*-phthalaldehyde (0.6 mg/mL) and incubated while mixing for color development (30 min, 60 °C). Finally, triplicate measured absorbance at 550 nm using a microplate reader (Cytation 5, Biotek).

2.5. Bile Salts Binding Capacity

A mixture of NaCl (15 M, pH 7.0) and sodium cholate (4.65 mM) was added to 0.1 g of the residual fraction of gastric and intestinal flour digestion. The samples were incubated for 3 h at 37 °C while mixing, followed by an 800 g 15 min centrifugation. Hereafter, 0.6 mL of HCl (45%) and 0.1 mL of furfural (0.3%) were added to 0.1 mL of the supernatant. The samples were incubated with

oscillations for color development (30 min, 65 °C). Absorbance was measured by triplicate at 620 nm using a microplate reader.

2.6. Inhibitory Activity against Pancreatic Lipase

To determine the inhibitory activity against pancreatic lipase, a mixture consisting of olive oil (2 mL), lipase (2 mL, 0.75 mg/mL), bile salts (5 mL), and PBS 10× (5 mL, pH 7.2), was added to 0.1 g of the residual fraction of each flour digestion. Controls were carried with or without each compound (including residual fraction). Samples were incubated (37 °C, 1 h). The reaction was stopped in the cold for 5 min, followed by centrifugation (800 g, 15 min). Hereafter, Tween® 20 (0.2 mL) was added to the supernatant of those samples that contained olive oil to emulsify the fats. Finally, each sample's lipase activity was measured using an acid-base titration with NaOH (0.02 M) and phenolphthalein.

2.7. Treatment Preparation for HepG2 Cells

The digested fractions of cocoa shell flour (CSF) and extract (CSE) were diluted in DMEM free and filtered with 0.45 µm cellulose acetate filters.

2.8. Cell Culture Method

HepG2 cells were obtained from ATCC, (Rockville, MD, USA). Cells were cultured in DMEM (1000 g/mL glucose) supplemented with 10% FBS and 1% penicillin/streptomycin at 37 °C in a humidified atmosphere.

2.8.1. Cell Viability

HepG2 cells were seeded at 5×10^5 cells/mL in 96 well culture plates and incubated for 24 h. On day 2, cells were treated with CSF and CSE (50–250 mg/mL) for 24 h at 37 °C in a humidified atmosphere. On day 3, cell viability assay was performed with the CellTiter 96® AQueous MTS Reagent Powder (Promega Corporation) according to the manufacturer's instructions.

2.8.2. NAFLD Induction in HepG2 Cells

HepG2 were seeded at 10^5 cells/cm² in 96 well culture plates and incubated for 24 h. On day 2, NAFLD was induced in HepG2 cells with PA (500 µM), and they were treated with CSF or CSE (100 µg/mL) for 24 h at 37 °C in a humidified atmosphere. To prepare the PA solution, PA was conjugated with DMEM containing 1% BSA. Control cells were treated with 1% BSA only.

2.8.3. Reactive Oxygen Species Formation in HepG2 Cells

After 24 h incubation with treatments, NAFLD induction was determined by measuring the intracellular reactive oxygen species (ROS) formation by adding DCFDA (25 µM). Fluorescence intensity was detected using a fluorescence microplate reader at an excitation/emission wavelength at 485 nm/530 nm, respectively. DCFDA was prepared according to the manufacturer's instructions.

2.8.4. Biological Hypolipidemic Activity

The accumulation of total lipids and intracellular triglycerides were performed as previously described by Rebollo-Hernanz et al. [9] using Oil Red O and a colorimetric triglycerides assay kit (Spinreact), respectively, according to manufacturer's instructions. Cholesterol accumulation was measured as previously described by Ryu et al. [11] using a colorimetric cholesterol assay kit (Spinreact) according to the manufacturer's instructions.

2.9. Statistical Analysis

All experiments were carried out by triplicate. Results are expressed as the mean ± standard deviation (SD) ($n = 3$) and were assessed statistically by one-way analysis of variance (ANOVA) and

post hoc Tukey test. Differences were defined as statistically significant for values of $p < 0.05$. All analyses were performed using SPSS 24.0.

3. Results

3.1. Simulated In Vitro Digestion Enhanced the Hypolipidemic Properties of Cocoa Shell

As observed in Figure 1A the digestion process affected cholesterol-binding capacity in the cocoa shell. Simulating physiological parameters, gastric digestion residues at pH 2, and gastrointestinal phase at pH 7 reduced cholesterol-binding capacity. However, it improved during colonic digestion at both pHs. On the other hand, the digestion of cocoa shell significantly ($p < 0.05$) improved bile salts-binding capacity during all digestion phases. (Figure 1B). Furthermore, cocoa shell digestion positively enhanced lipase inhibition during gastric and gastrointestinal phases with or without bile salts addition (Figure 1C).

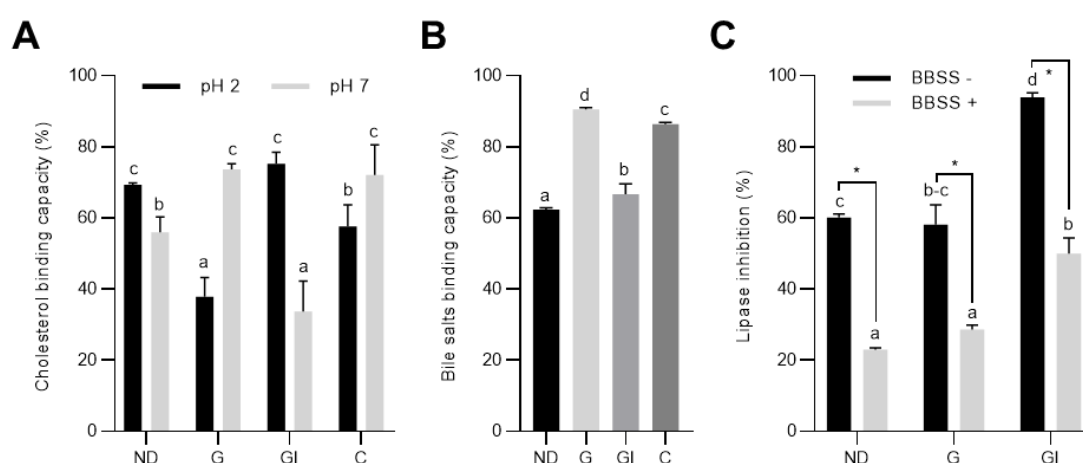


Figure 1. Effect of digestion on cocoa shell hypolipidemic properties. (A) Cholesterol binding capacity of cocoa shell digested residual fractions at pH 2.0 and pH 7.0; (B) Bile salts binding capacity of cocoa shell digested residual fractions; (C) In vitro lipase inhibition capacity of cocoa shell digested residual fractions without bile salts (BBSS-) and containing them (BBSS+). The results are expressed as mean \pm SD. Bars with different letters significantly ($p < 0.05$) differ according to ANOVA and Tukey's multiple range test. Statistically significant ($p < 0.05$) differences between paired samples according to the *T*-test are represented by an asterisk (*). ND: Non-digested flour; G: Gastric residual fraction; GI: Intestinal residual fraction; C: Colonic residual fraction.

3.2. Cocoa Shell Was Not Toxic and Regulated PA-Stimulated ROS Formation and Lipid Accumulation

To simulate NAFLD model on cell cultures, HepG2 cells were incubated for 24 h with PA (500 μ M) and ROS levels were measured to study NAFLD induction. MTS assay was carried out to determine the effect of different concentrations of CSE and CSF (50–250 μ g/mL) on HepG2 proliferation, and the findings indicated that all the concentrations used were no cytotoxic and significantly ($p < 0.05$) reduced the toxic effects of PA. The results showed that PA significantly ($p < 0.05$) induced ROS formation. Moreover, HepG2 cell morphology changed after incubation with PA, favoring the formation of lipid drops (Figure 2). CSE and CSF (50–250 μ g/mL) significantly ($p < 0.05$) reduced the accumulation of fat (17–42%), and modulated triglycerides and cholesterol levels, lowering them by about 9–38% and 11–54% ($p < 0.05$), respectively, after the induction of NAFLD with PA.

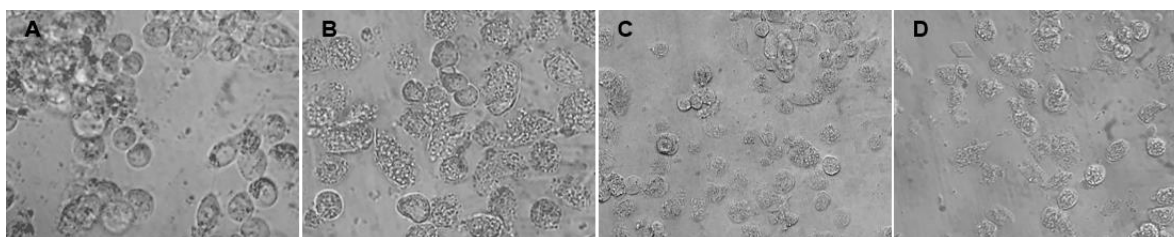


Figure 2. Illustrative representation of HepG2 morphologies after incubation in different conditions (A) Cells cultured in DMEM-BSA 1%; (B) cells cultured in DMEM-BSA 1% with PA (500 μ M); (C) cells cultured in DMEM-BSA 1% with PA (500 μ M) treated with gastric CSE (100 μ g/mL); (D) cells cultured in DMEM-BSA 1% with PA (500 μ M) treated with gastric CSE (200 μ g/mL).

4. Discussion

Cocoa has been reported to have benefits for health [12]. Cocoa shell composition has been described to be similar to that of cocoa beans. It also presents hypolipidemic and hypoglycemic properties *in vitro*, which may be explained because of its chemical composition [5,7]. Cocoa shell is a rich source of DF [7]. DF is not absorbed nor digested during the human gastrointestinal digestion process but could be wholly or partially fermented [13]. DF has been reported to mediate lipid metabolism and cholesterol absorption. Previous studies have demonstrated that most NAFLD patients follow a diet poor in DF [14,15]. The residual fraction of the simulated gastric and gastrointestinal digestion of cocoa shell flour showed less cholesterol-binding capacity at physiological pHs (2.0 and 7.0, respectively) than non-digested flour. Besides, the residual fraction of every phase simulated digestion improved the bile salts-binding capacity. Previous studies have demonstrated that DF possesses bile salts-binding ability and modulates the accumulation of circulating triglycerides by inhibiting bile-salts' surfactant activity, which reduces micelles formation during intestinal digestion, and therefore, intestinal lipid absorption [16]. Likewise, DF can reduce cholesterol absorption. The residual fraction of every simulated digestion of cocoa shell flour showed higher pancreatic lipase inhibition than non-digested flour. DF's bile salts-binding capacity reduces micelles formation, explaining the decrease in lipase activity because of a reduction in lipid accessibility. It could also explain why bile salts added to the lipase inhibition method reduced the lipase inhibition capacity of cocoa shell flour [16]. Similarly, DF can entrap the enzyme (lipase) or the substrate (triglycerides) and reduce its activity [17]. These results suggest that cocoa shell digestion could enhance its hypolipidemic properties, which could play an essential role in treating or preventing chronic diseases associated with hyperlipidemia such as NAFLD.

Studies in HepG2 cells showed that CSE and CSF reduced lipid, cholesterol, and triglycerides accumulation after the induction of simulated NAFLD and could significantly reduce ROS levels, probably due to the antioxidant properties of the cocoa shell polyphenols [18]. Some authors have suggested that oxidative stress and mitochondrial dysfunction could be critical factors during NAFLD progression [19]. Previous studies in our group proved the effects of cocoa shell phytochemicals on protecting mitochondrial function and regulating metabolism in hepatocytes [20]. The results obtained suggest the potential role of the cocoa shell to prevent this disease. From this perspective, and based on the high DF and phenolic compounds content of cocoa shell, evaluating the effects of its digestion on hypolipidemic properties and biological activity is necessary to revalorize them as novel ingredients, which could have health benefits in some diseases like NAFLD and will also have a positive impact on the environment. Further investigations on the bioaccessible and the non-digestible fractions of the cocoa shell and their *in vivo* functional properties will be completed to confirm its health properties.

5. Conclusions

Digestion positively impacted the cocoa shell's hypolipidemic properties, leading to enhanced biological activity *in vitro* and in cell culture models. Since the cocoa shell might be used as a safe

novel ingredient to prevent hyperlipidemia and regulate lipid metabolism, future animal and clinical investigations will be necessary to confirm the effects observed in vitro.

Author Contributions: Conceptualization, M.R.-H., V.B., Y.A., and M.A.M.-C; formal analysis, C.B. and M.R.-H.; investigation, C.B.; data curation, C.B. and S.C.; writing—original draft preparation, C.B., M.R.-H., and V.B.; writing—review and editing, C.B., M.R.-H., and V.B.; supervision, V.B. and M.A.M.-C; funding acquisition, S.M.A. and M.A.M.-C. All authors have read and agreed to the published version of the manuscript.

Funding: This research was funded by the COCARDIOLAC project from the Spanish Ministry of Science and Innovation (RTI 2018–097504-B-I00). M. Rebollo-Hernanz received funding from the FPU program of the Ministry of Science, Innovation, and Universities for his predoctoral fellowship (FPU15/04238).

Conflicts of Interest: The authors declare no conflict of interest.

References

1. Fabbrini, E.; Sullivan, S.; Klein, S. Obesity and nonalcoholic fatty liver disease: Biochemical, metabolic, and clinical implications. *Hepatology* **2010**, *51*, 679–689, doi:10.1002/hep.23280.
2. Demir, M.; Lang, S.; Steffen, H.M. Nonalcoholic fatty liver disease—Current status and future directions. *J. Dig. Dis.* **2015**, *16*, 541–557, doi:10.1111/1751–2980.12291.
3. Matteoni, C.A.; Younossi, Z.M.; Gramlich, T.; Boparai, N.; Yao Chang Liu; McCullough, A.J. Nonalcoholic fatty liver disease: A spectrum of clinical and pathological severity. *Gastroenterology* **1999**, *116*, 1413–1419, doi:10.1016/S0016–5085(99)70506–8.
4. Lau, L.H.S.; Wong, S.H. Microbiota, obesity and NAFLD. *Adv. Exp. Med. Biol.* **2018**, *1061*, 111–125, doi:10.1007/978–981-10-8684-7_9.
5. Rojo-Poveda, O.; Barbosa-Pereira, L.; Zeppa, G.; Stévigny, C. Cocoa bean shell—A by-product with nutritional properties and biofunctional potential. *Nutrients* **2020**, *12*, 1–29, doi:10.3390/nu12041123.
6. Panak Balentić, J.; Ačkar, Đ.; Jokić, S.; Jozinović, A.; Babić, J.; Miličević, B.; Šubarić, D.; Pavlović, N. Cocoa Shell: A By-Product with Great Potential for Wide Application. *Molecules* **2018**, *23*, 1–14, doi:10.3390/molecules23061404.
7. Rebollo-Hernanz, M.; Cañas, S.; Aguilera, Y.; Benitez, V.; Gila-Díaz, A.; Rodriguez-Rodriguez, P.; Cobeta, I.M.; de Pablo, A.L.L.; Gonzalez, M.C.; Arribas, S.M.; et al. Validation of Cocoa Shell as a Novel Antioxidant Dietary Fiber Food Ingredient: Nutritional Value, Functional Properties, and Safety. *Curr. Dev. Nutr.* **2020**, *4*, 773–773, doi:10.1093/cdn/nzaa052_042.
8. Rebollo-Hernanz, M.; Zhang, Q.; Aguilera, Y.; Martín-Cabrejas, M.A.; Gonzalez de Mejia, E. Phenolic compounds from coffee by-products modulate adipogenesis-related inflammation, mitochondrial dysfunction, and insulin resistance in adipocytes, via insulin/PI3K/AKT signaling pathways. *Food Chem. Toxicol.* **2019**, *132*, 110672, doi:10.1016/j.fct.2019.110672.
9. Brodkorb, A.; Egger, L.; Alming, M.; Alvito, P.; Assunção, R.; Ballance, S.; Bohn, T.; Bourlieu-Lacanal, C.; Boutrou, R.; Carrière, F.; et al. INFOGEST static in vitro simulation of gastrointestinal food digestion. *Nat. Protoc.* **2019**, *14*, 991–1014, doi:10.1038/s41596–018-0119–1.
10. Ryu, H.M.; Kim, Y.J.; Oh, E.J.; Oh, S.H.; Choi, J.Y.; Cho, J.H.; Kim, C.D.; Park, S.H.; Kim, Y.L. Hypoxanthine induces cholesterol accumulation and incites atherosclerosis in apolipoprotein E-deficient mice and cells. *J. Cell. Mol. Med.* **2016**, *20*, 2160–2172, doi:10.1111/jcmm.12916.
11. Badrie, N.; Bekele, F.; Sikora, E.; Sikora, M. Cocoa Agronomy, Quality, Nutritional, and Health Aspects. *Crit. Rev. Food Sci. Nutr.* **2015**, *55*, 620–659, doi:10.1080/10408398.2012.669428.
12. Macagnan, F.T.; da Silva, L.P.; Hecktheuer, L.H. Dietary fibre: The scientific search for an ideal definition and methodology of analysis, and its physiological importance as a carrier of bioactive compounds. *Food Res. Int.* **2016**, *85*, 144–154, doi:10.1016/j.foodres.2016.04.032.
13. Hong, Y.; Zi-jun, W.; Jian, X.; Ying-jie, D.; Fang, M. Development of the dietary fiber functional food and studies on its toxicological and physiologic properties. *Food Chem. Toxicol.* **2012**, *50*, 3367–3374, doi:10.1016/j.fct.2012.05.011.
14. Eslamparast, T.; Tandon, P.; Raman, M. Dietary Composition Independent of Weight Loss in the Management of Non-Alcoholic Fatty Liver Disease. *Nutrients* **2017**, *9*, 800, doi:10.3390/nu9080800.

15. Capuano, E. The behavior of dietary fiber in the gastrointestinal tract determines its physiological effect. *Crit. Rev. Food Sci. Nutr.* **2017**, *57*, 3543–3564, doi:10.1080/10408398.2016.1180501.
16. Fontes, A.; Alemany-Pagès, M.; Oliveira, P.J.; Ramalho-Santos, J.; Zischka, H.; Azul, A.M. Antioxidant versus pro-apoptotic effects of mushroom-enriched diets on mitochondria in liver disease. *Int. J. Mol. Sci.* **2019**, *20*, doi:10.3390/ijms20163987.



© 2020 by the authors; licensee MDPI, Basel, Switzerland. This article is an open access article distributed under the terms and conditions of the Creative Commons by Attribution (CC-BY) license (<http://creativecommons.org/licenses/by/4.0/>).