

Spatio-temporal variability in glacier melt contribution in Bhagirathi river discharge in the headwater region of Himalaya

Suneel Kumar Joshi (Research Scientist C),

Suhas D. Khobragade and Sudhir Kumar

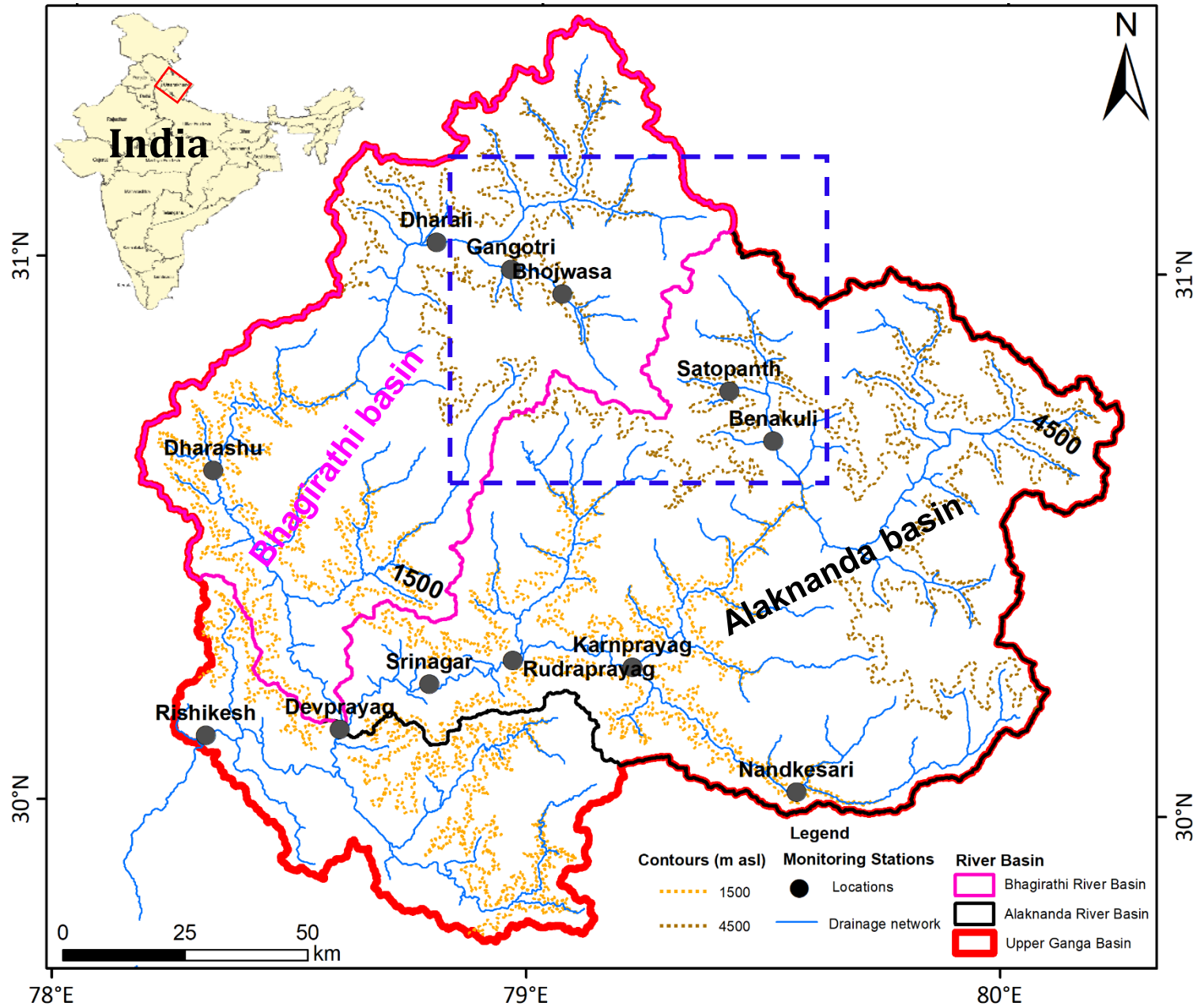


**National Institute of Hydrology, Roorkee,
Uttarakhand, India**

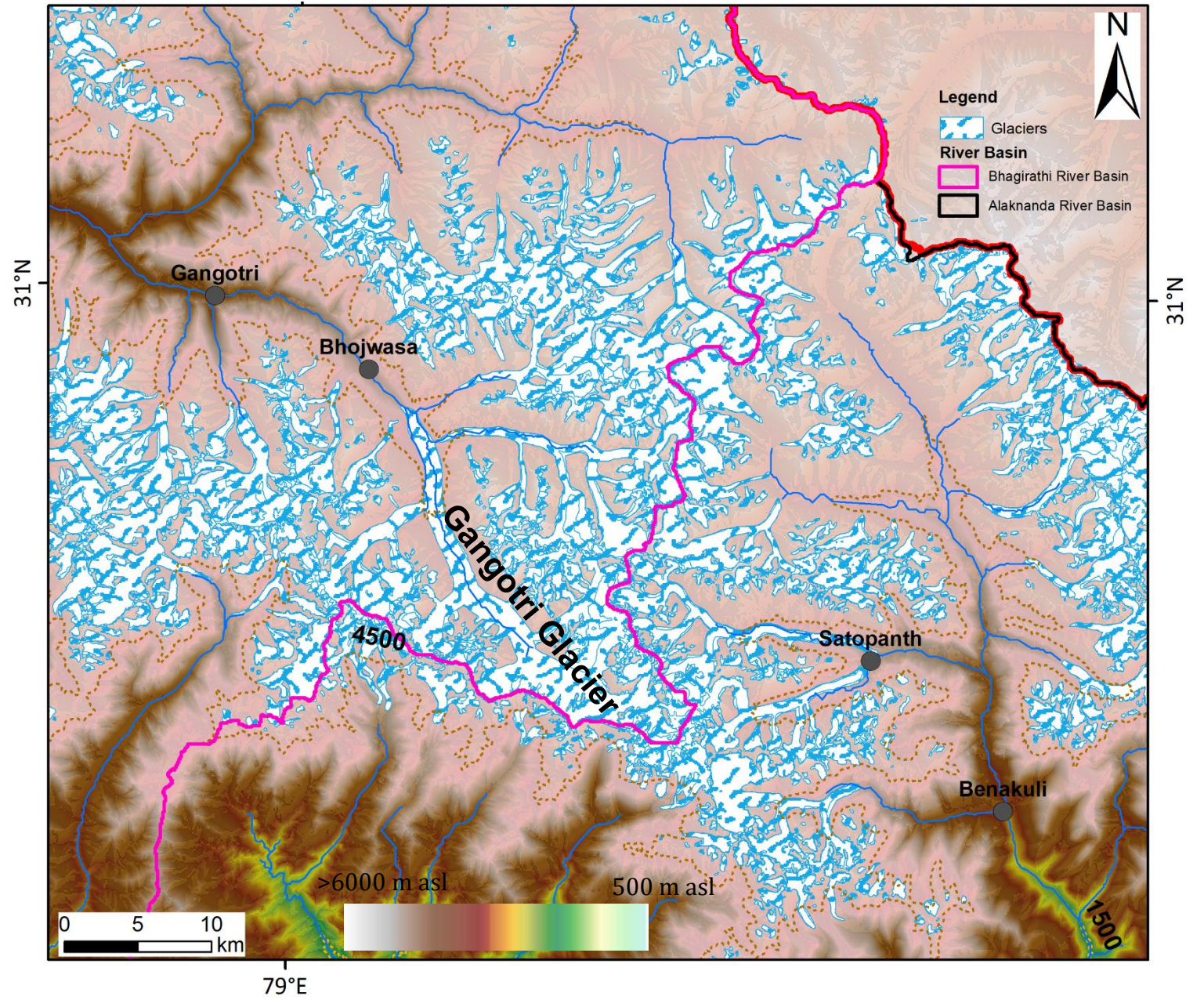
Session: Water Resources Management and the Ecosphere Resilience and Adaptation

5th International Electronic Conference on Water Sciences

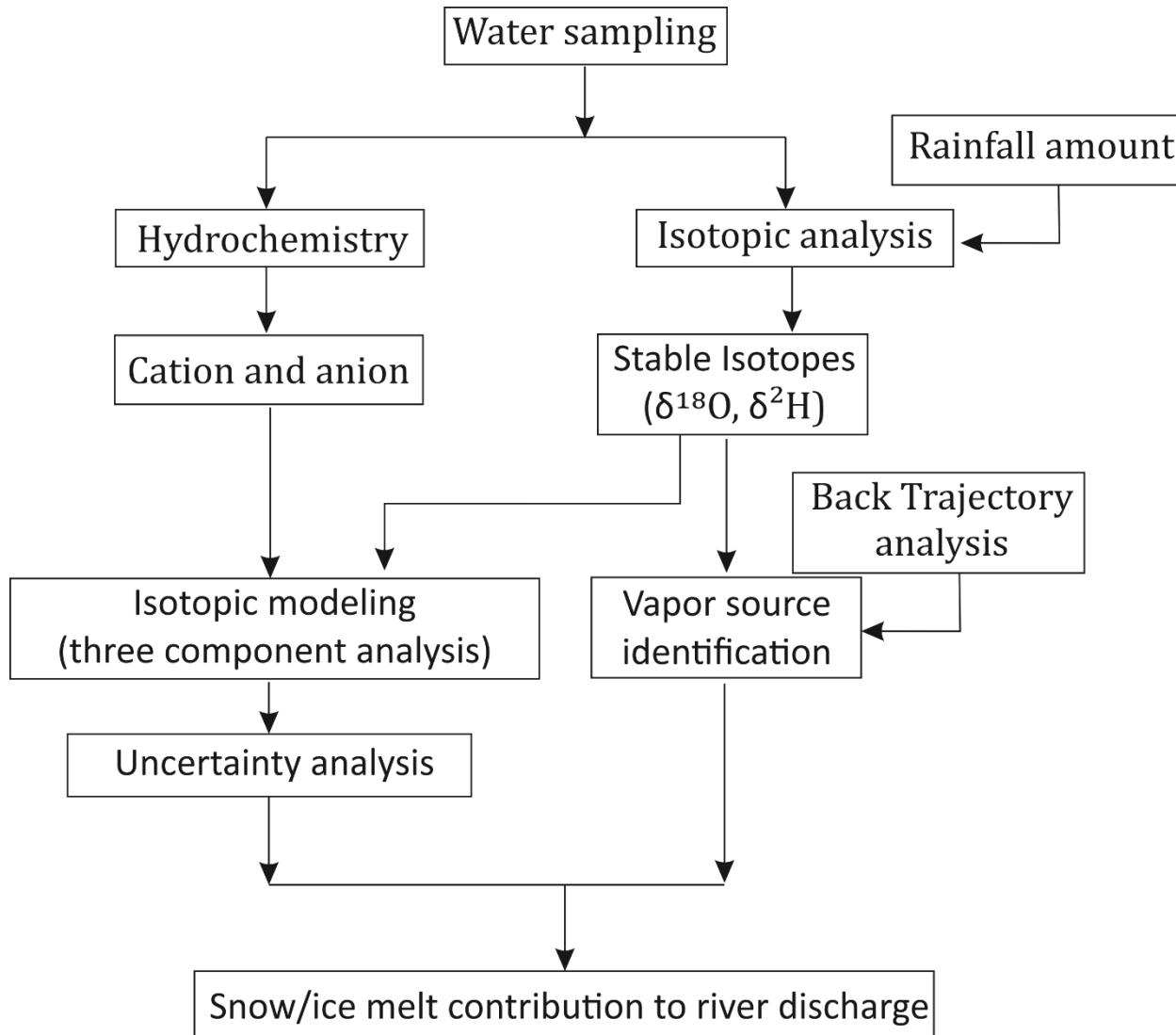
Upper Ganga basin up to Rishikesh



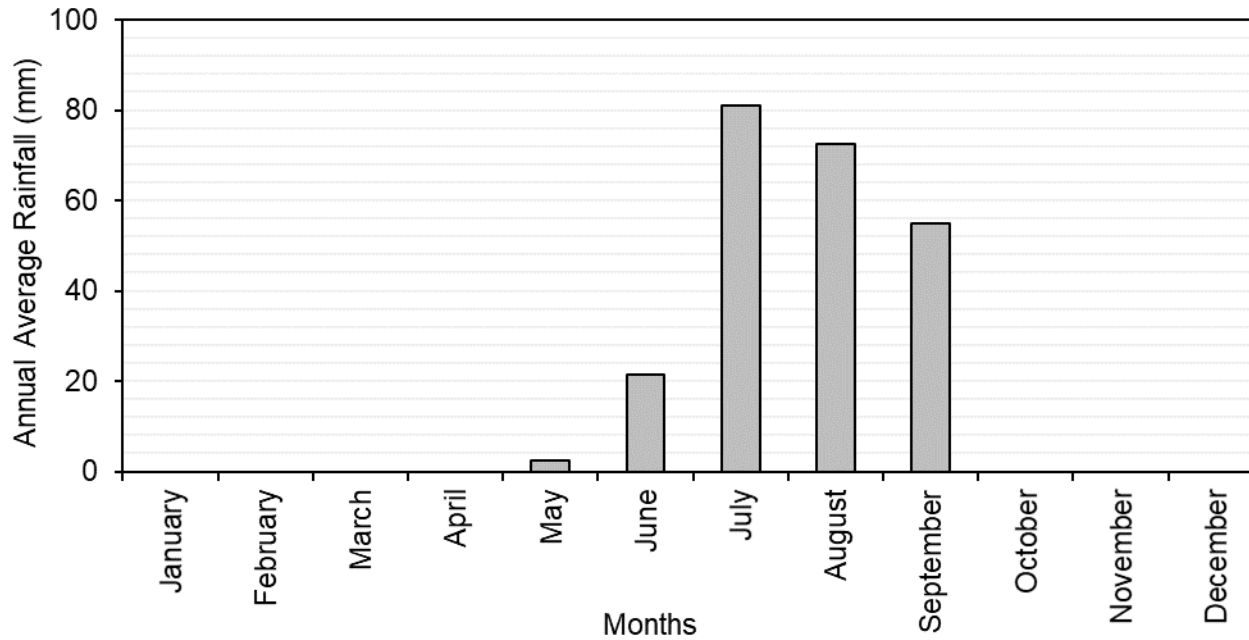
Study area: Gangotri glacier



Approach

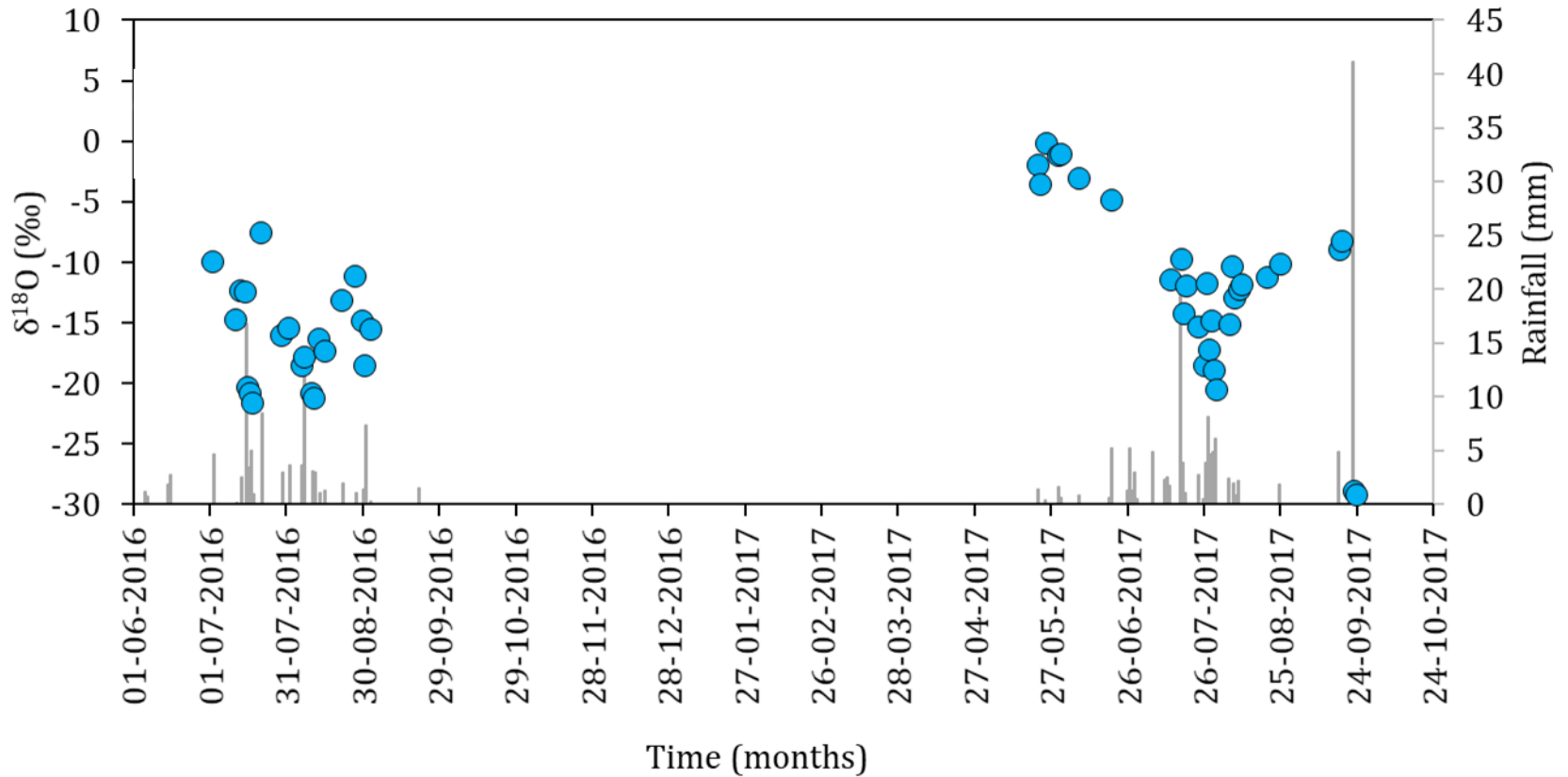


Annual Average Rainfall (mm)

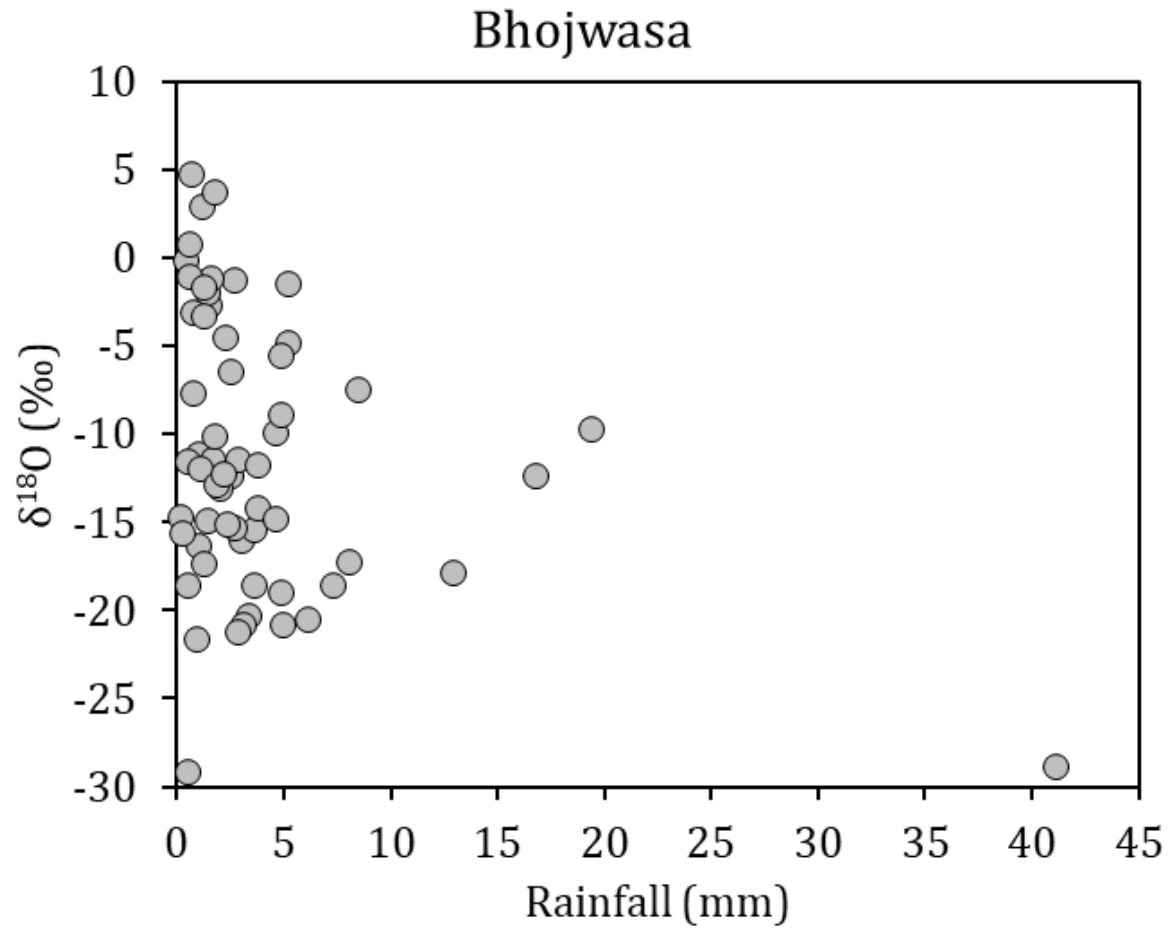


Temporal variation of $\delta^{18}\text{O}$ and rainfall amount

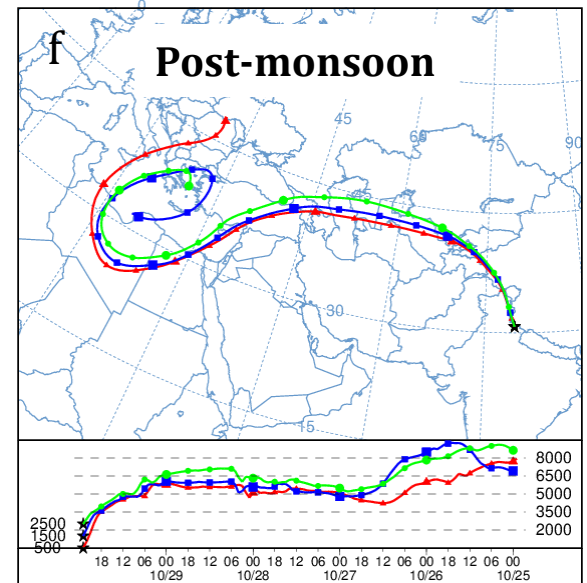
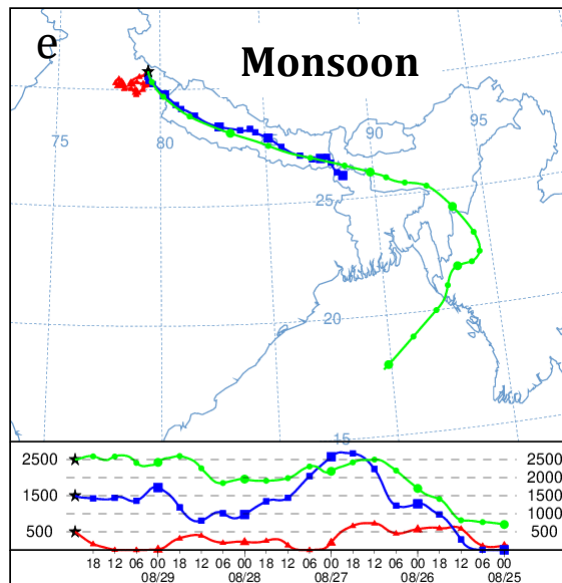
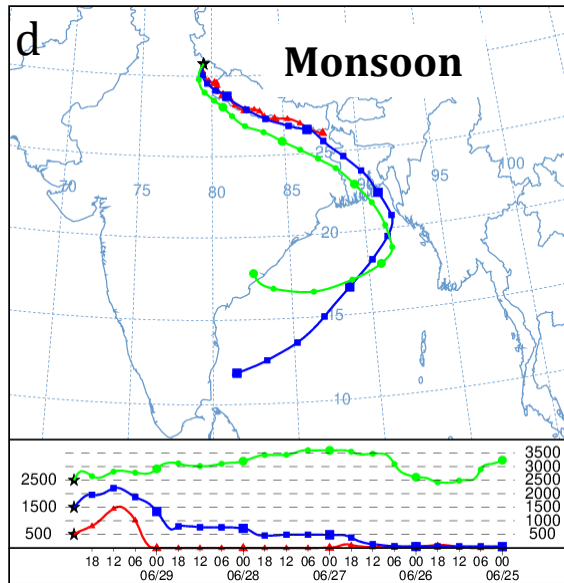
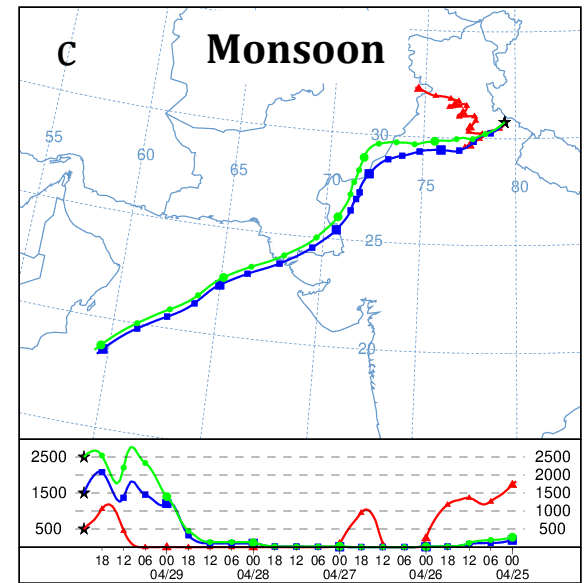
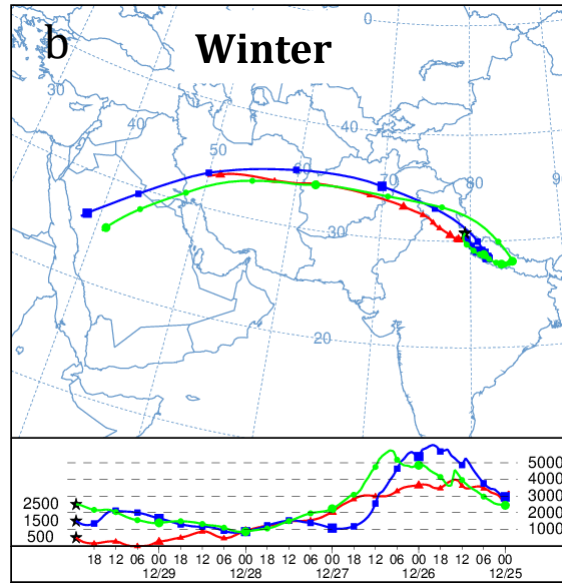
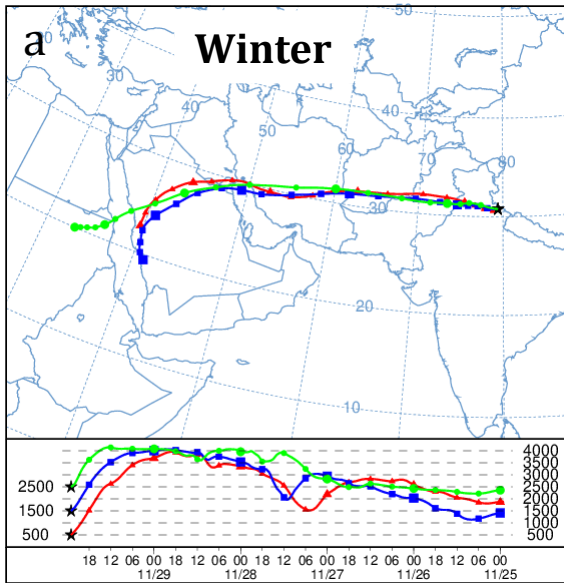
Bhojwasa



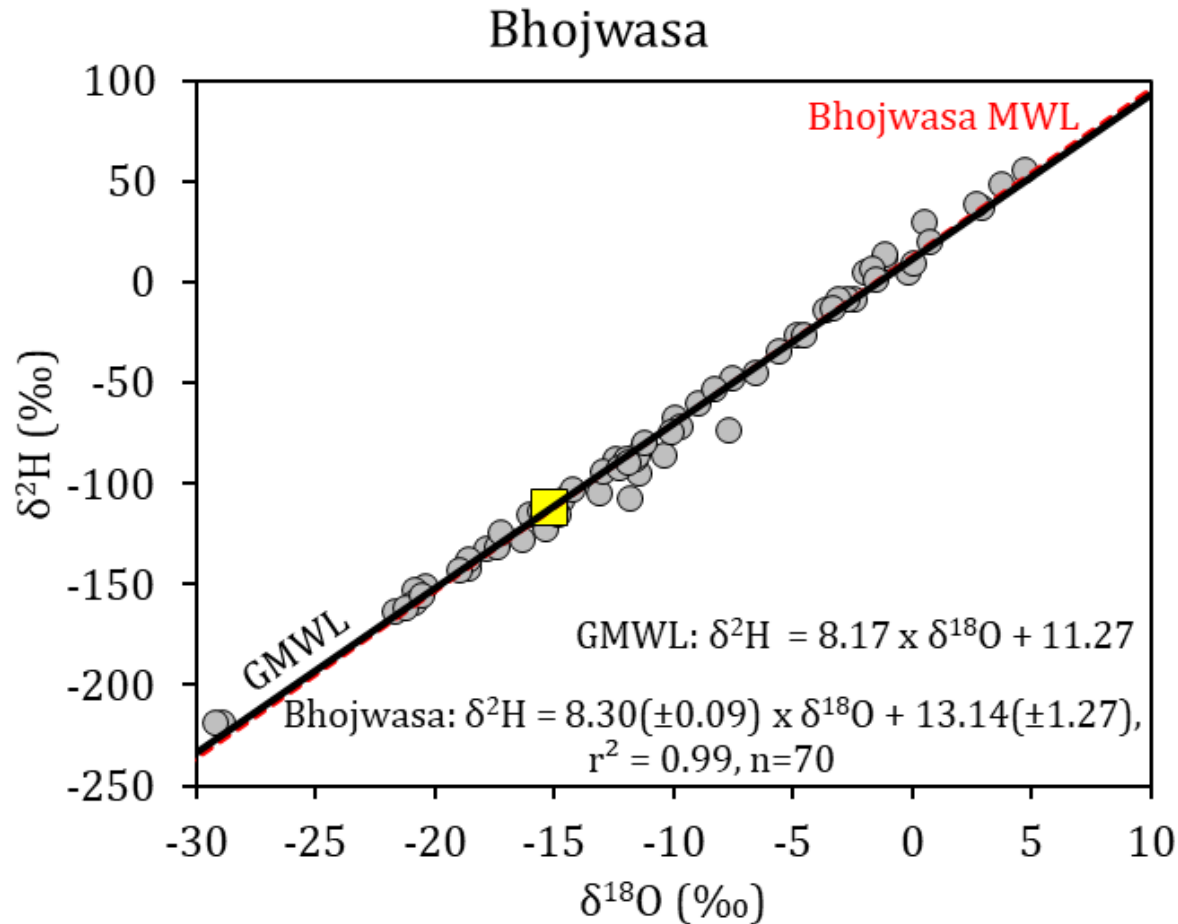
Rainfall amount vs. $\delta^{18}\text{O}$



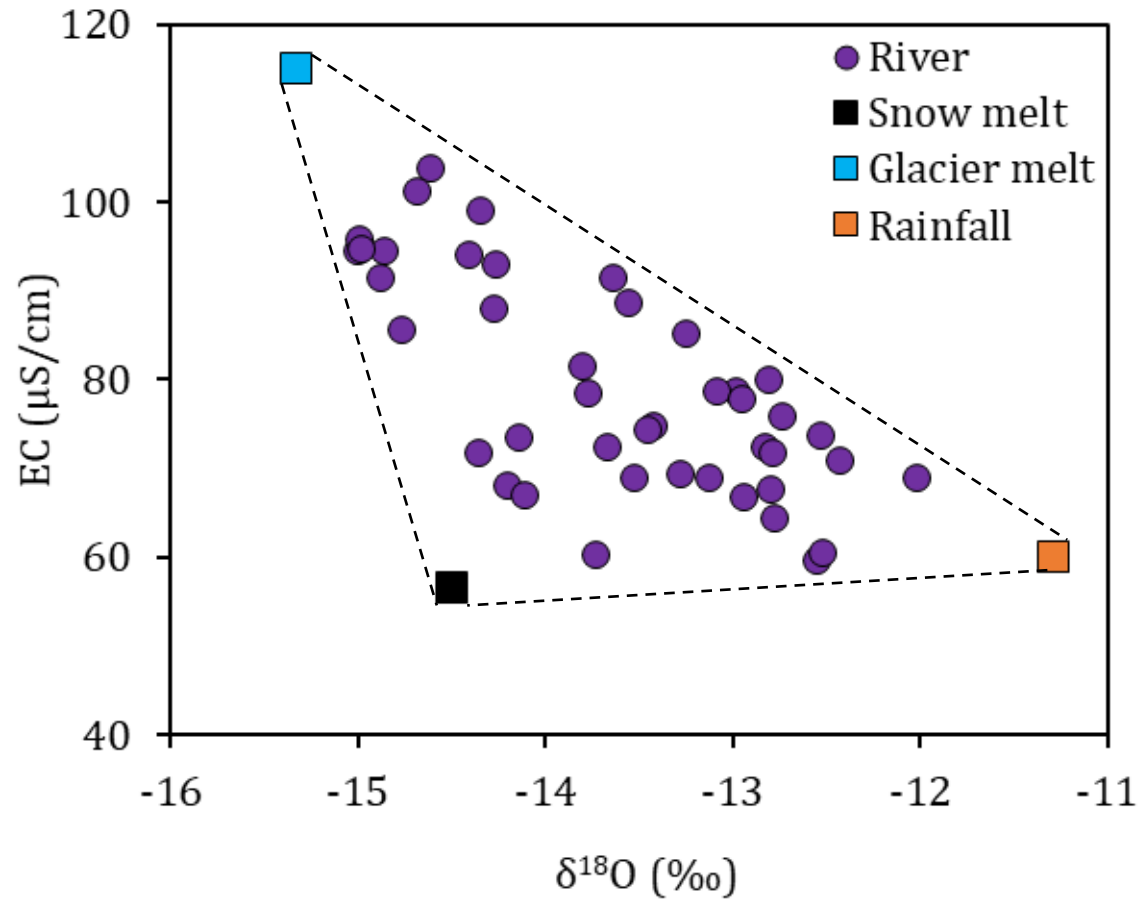
Moisture source for precipitation



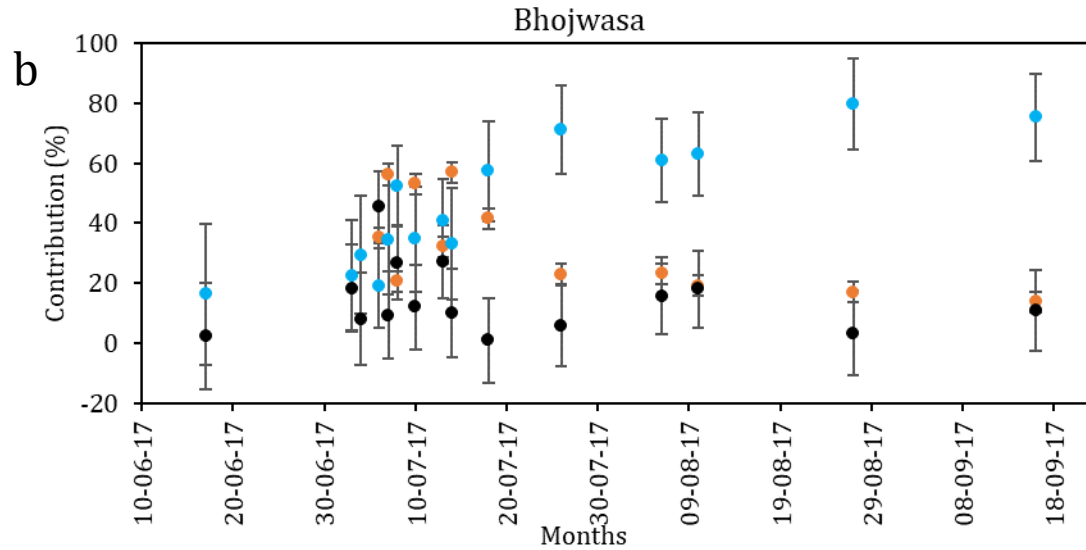
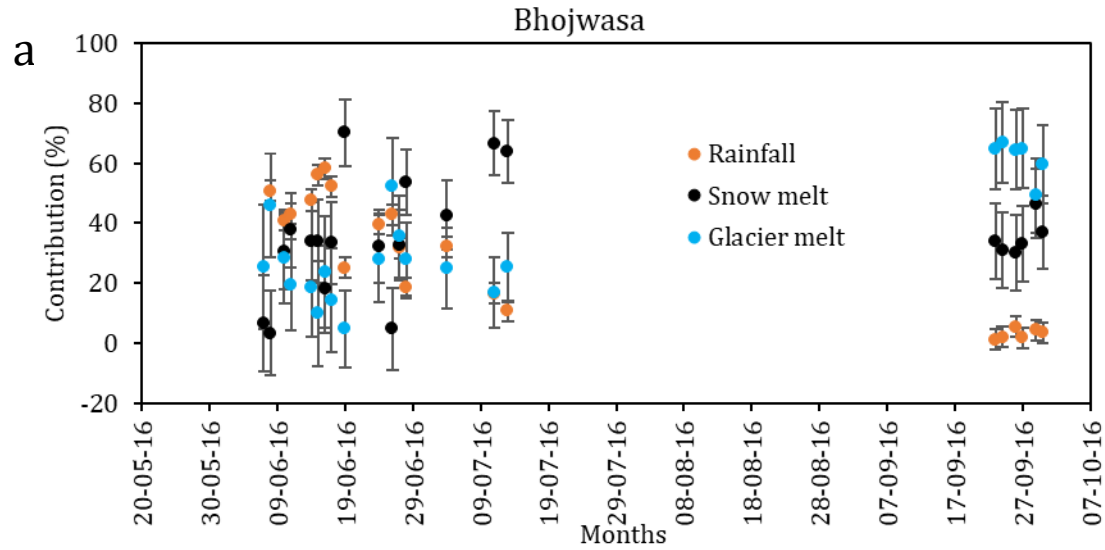
Isotopic composition of rainfall at Bhojwasa



End-member mixing diagram



Relative contribution at Bhojwasa





Thank you...

Suneel Kumar Joshi,
Email: joshisuneelkumar@gmail.com
Mobile: +91 9453047196