

Estimation of Direct Fire Emissions from Forests Burning in Siberia

Evgenii Ponomarev ^{1,2*}

¹ Federal Research Center "Krasnoyarsk Science Center, Siberian Branch, Russian Academy of Sciences", Krasnoyarsk 660036, Russia; evg@ksc.krasn.ru (E.P.)

² Siberian Federal University, Krasnoyarsk 660041, Russia; evg@ksc.krasn.ru

* Correspondence: evg@ksc.krasn.ru; Tel.: +7-391-249-4092 (E.P.)

Abstract: Using a database on wildfires recorded by remote sensing for 1996–2020, we assessed the seasonal variation of direct carbon emissions from the burning in Siberian forests. We have implemented an approach that takes into account the combustion parameters and the changing intensity of the fire (in terms of Fire Radiative Power, FRP), which affects the accuracy of the emission estimate. For the last two decades, the range of direct carbon emissions from wildfires was 20–250 Tg C per year. Sporadic maxima were fixed in 2003 (> 150 Tg C/yr), in 2012 (> 220 Tg C/yr), and in 2019 (> 190 Tg C/yr). Preliminary estimation of emissions for 2020 (on 30th of September) was ~180 Tg/year. Fires in the larch forests of the flat-mountainous taiga region (Central Siberia) made the greatest contribution (>50%) to the budget of direct fire emission, affecting the quality of the atmosphere in vast territories during summer period. According to the temperature rising and forest burning trend in Siberia, the fire emissions of carbon may double (220 Tg C/yr) or even increase by an order of magnitude (>2000 Tg C/yr) at the end of the 21st century, which was evaluated depending on IPCC scenario.

Keywords: wildfire; larch forests; Siberia; emissions; fire radiative power; remote sensing

1. Introduction

Direct emissions from Siberian wildfires are the significant factor affecting the quality of the atmosphere in vast territories during the season of active burning in forests (March–September). Smoke plumes can be transported several thousand kilometers from the zone of active wildfires depending on the fire numbers, areas and duration of burning and current meteorological conditions as well [1–3]. In recent decades, wildfires of the boreal zone (60–70° N; 90–130° E) of Siberia annually cause an increase in concentration of smoke over Siberia in summertime. Smoke reaches the main cities of the central part and south of Siberia (Novosibirsk, Krasnoyarsk, Yakutsk, and Irkutsk etc.) regularly. In some years the smoke from Siberia was transferred to the European part of Russia (in 2012, 2016), or to Far Eastern part of Russia (in 2003), as well as to the Arctic (in 2019) [3–5].

Estimates of carbon emissions in Siberia are discussed for a long time [6–8]. However, there are some limitations in the accuracy of emission estimates. It is necessary to take into account the differences in burning intensity, and therefore to calculate differentially the emissions from each part of burnt area, which could be characterized with variety of burning characteristics [1,2,9]. Using satellite data [1,10] it is possible to obtain accurate estimates on wildfire area, forest burnt plots and the intensity of combustion for different parts of the wildfire. It was shown [11], that the biomass combustion rate is linearly related to Fire Radiative Power (FRP), which could be evaluated from satellite imagery of 4- μ m band. To use it, a remote sensing approach for wildfire's energy estimate

could be used [12,13]. Thus, a refinement of the combusted biomass and carbon emissions estimates requires to be performed by accounting for variations in the combustion characteristics within each fire polygon.

The extreme estimates for the direct fire emissions from the fires in Siberia are >500 Tg C/yr [6], which seems to be overestimated, comparing to data for Canada (>300 Tg C/yr) [14] as well as to averaged data for Siberia (120–140 Tg/year) [8]. Although, taking into account climatic changes, this indicator in Siberia is predicted to be up to 240 Tg/year in the second half of the 21st century [15]. Currently, the problem of quantitative estimates of fire emissions is not completely solved.

The aim of this study was to estimate long-term variety of direct fire emission of carbon based on the satellite data on wildfires and Fire Radiative Power (FRP) measurements.

2. Experiments

2.1. Study area

The territory of Siberia ($50\text{--}70^\circ$ N and $60\text{--}150^\circ$ E) encompasses about 9.7×10^6 km² (Fig. 1). The forested area of Siberia is estimated at 6.0×10^6 km². The majority of Russian forests ($\sim 70\%$, including sparse stands) located in Siberia. The major Siberian forest types are formed by larch (*Larix sibirica*, *L. gmelinii*, and *L. cajanderi*), Scots pine (*Pinus sylvestris*), dark needled conifers (*Pinus sibirica*, *Abies sibirica*, *Picea obovata*), birch (*Betula spp.*), and aspen (*Populus tremula*) species. Forests dominated (based on data from Vega-service, <http://pro-vega.ru/maps/> [16]) by larch range over an area of $2.7\text{--}3.0 \times 10^6$ km²; an area of Scots pine stands extends over 1.2×10^6 km², dark coniferous stands occupy 1.0×10^6 km², and mixed forest covers about 7.7×10^6 km².

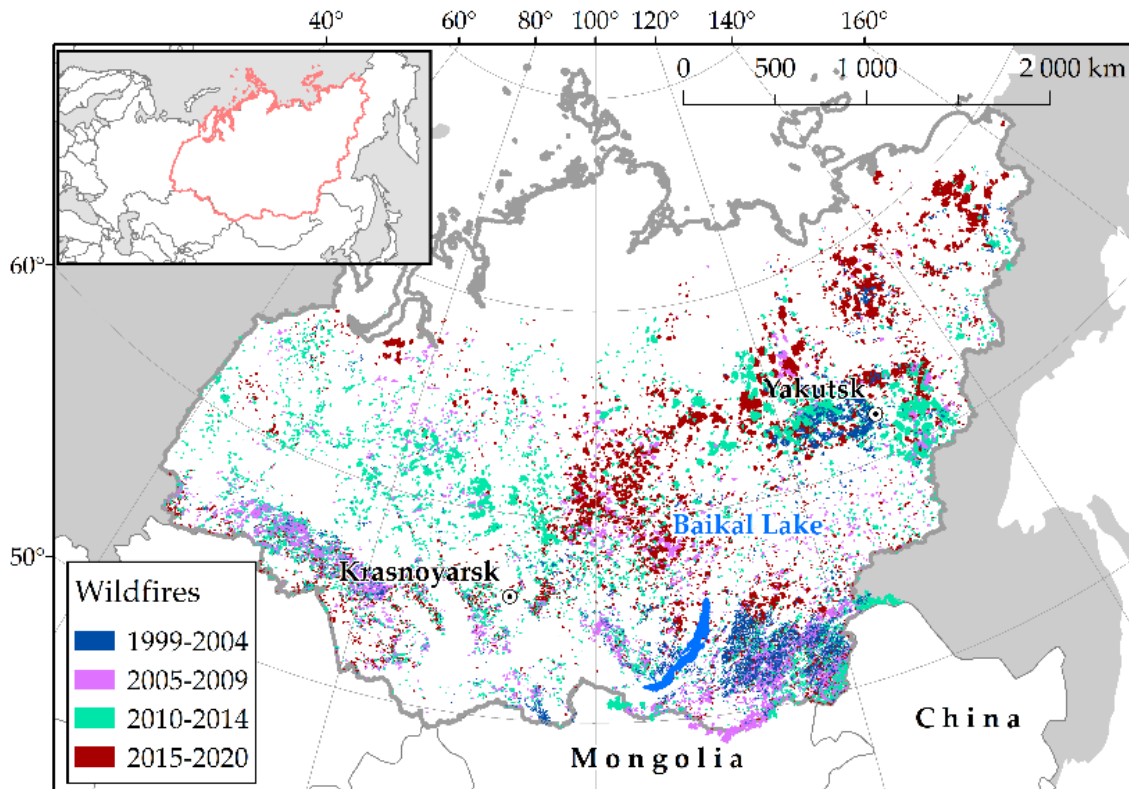


Figure 1. Territory of Siberia and spatial distribution of wildfires (burned area >2000 ha) in 1996–2020.

2.2. Data on wildfires

We considered all forest fires detected by remote sensing technology over the territory of Siberia (Fig. 1). But since we used FRP data from Terra/MODIS, we could evaluate emission estimates for the 2002–2020 only. We used our own wildfires attributive data collected using Terra and Aqua/MODIS imagery in the V.N. Sukachev Institute of Forest of Federal Research Center “Krasnoyarsk Science Center, Siberian Branch, Russian Academy of Sciences” (Krasnoyarsk, Russia) [17]. Active fire products of MODIS data for fire detection (MOD14/MYD14) with estimates of fire radiative power (FRP) were acquired from the Level-1 and Atmosphere Archive & Distribution System (LAADS) Distributed Active Archive Center (DAAC) website (<https://ladsweb.modaps.eosdis.nasa.gov/>).

2.3. Methods

We linked each record from the wildfire database to forest type available for Siberia from the VEGA geoinformation resource [16] using GIS procedure of intersection of vector layers. Forest types characteristics and pre-fire fuel loads were summarized from field obtained data [1,6,7,18,19].

Next, we classified the fire pixels into three categories of FRP using thresholds, which were calculated on statistics of fire radiative power distribution (FRP mean and Standard Deviation) under the conditions of burning in forests of Siberia. Three categories of fire pixels were separated: fires of low FRP ($FRP < FRP_{mean} - \sigma$), fires of medium FRP ($FRP_{mean} - \sigma < FRP < FRP_{mean} + \sigma$), and fires of high FRP ($FRP > FRP_{mean} + \sigma$) [20]. We distinguished areas of fires corresponding to low, medium, and high FRP. Thus, the parameter of burned area (A , m^2) was represented as the sum of the areas having various FRP values:

$$A = \sum_i A_i(FRP_i), \quad (1)$$

The combusted biomass and carbon emissions were calculated using method of [21], taking into account the burned area (A , m^2), the combusted biomass (kg), the combustion completeness coefficient (β), the pre-fire fuel load (kg/m^2), and the emission factor (g/kg). The pre-fire fuel loads ($B = 1.38\text{--}5.4\text{ kg/m}^2$) for the sub-regions of Siberia were obtained from published data [7,18,19]. We used generalized data on on-ground fuels in forests with prevalence of larch, pine, dark coniferous, and deciduous stands as the input parameter. The value of β for each fire part was determined according to the FRP category $\beta = \beta_i(FRP_i) = 0.35\text{--}0.60$. The coefficient β was selected as 0.35–0.40 for low FRP, 0.40–0.45 for medium FRP, and 0.45–0.60 for high FRP. We considered also various empirical estimates [1,6,7] of forest fuels combusted during wildfires of various intensities: 0.11–0.97 kg/m^2 , 0.86–2.15 kg/m^2 , and 2.25–5.36 kg/m^2 , respectively, for low-, medium-, and high-intensity fires.

3. Results and discussion

3.1. Ratio of burned areas in forests of Siberia

Most of the MODIS fire pixels (up to 88% of the total) had FRP values below 50 MW/km^2 . The mean FRP value at the 95% confidence level was 37.4 MW/km^2 ($\sigma = 17.1\text{ MW/km}^2$). Two threshold values were defined to separate fire pixels by FRP categories: 20.3 MW/km^2 and 54.5 MW/km^2 [22]. According to the FRP categories, the proportion of low, medium, and high intensity of burning was classified for different forests of Siberia in terms of dominant tree species. Currently we obtained ratio of burned area of low-, moderate-, and high-intensity fires in Siberia as 47.0±13.6%, 42.5±10.5%, and 10.5±6.9% correspondingly [20,23]. An instrumental-based estimation of the areas burned by fires of various intensities in Siberia was performed for the first time. In previous studies, empirically obtained data indicated that the burned areas corresponded to 22%, 38.5%, and 38.5% for low-, medium-, and high-intensity fires, respectively [6]. Previously, we estimated [23] high-intensity crown fires part as 8.5% of the total burned forested area in Siberia.

Wildfires are the most important and permanent driver of forest dynamics in Siberia, but their impacts vary significantly in different forest types. Maximal burning rate was observed within larch-

dominated and Scots pine stands, while the lowest rates occur in dark needle coniferous stands (Table 1).

Table 1. The percentage of total fire occurrences and burned area by Siberian forest types.

Dominated tree stand	Fire number, % of total	Burned area, % of total
Larch (<i>Larix sibirica</i> , <i>L. dahurica</i> , <i>L. cajanderi</i>)	41.2	65.15
Scots pine (<i>Pinus sylvestris</i>)	26.17	17.95
Deciduous (<i>Populus tremula</i> and <i>Betula spp.</i>)	22.26	10.15
Dark needle coniferous (<i>Pinus sibirica</i> , <i>Abies sibirica</i> , <i>Picea obovata</i>)	7.97	5.68
Other types/Tundra	2.48	1.07

This assessments made using satellite data are similar to published data for burned areas in larch forests (up to 50% of the total), dark coniferous (about 5%), light coniferous, and deciduous (18% and 19%, respectively) [6,19].

Fires in the larch forests of the flat-mountainous taiga region (Central Siberia) made the greatest contribution (more than 65%) to the total annual burned area. It is reason for the highest value of direct emission will obtained further from burning in larch forests (see Table 2).

3.2. Direct carbon emissions

Our estimate (Fig. 2, Table 2) of carbon emissions from wildfires of Siberia was 85 ± 20 Tg/year. Between 2002 and 2020, direct fire emissions varied from the minimum values of 20–40 Tg/year (low fire danger scenarios of 2004, 2005, 2007, 2009, 2010) to a maxima of ~200 Tg/year in the extreme fire danger seasons (2012 and 2019). We obtained also preliminary estimation of emissions for 2020 (on 30th of September) which is ~180 Tg/year, although there are still some active burning in eastern part of Siberia in the end of September.

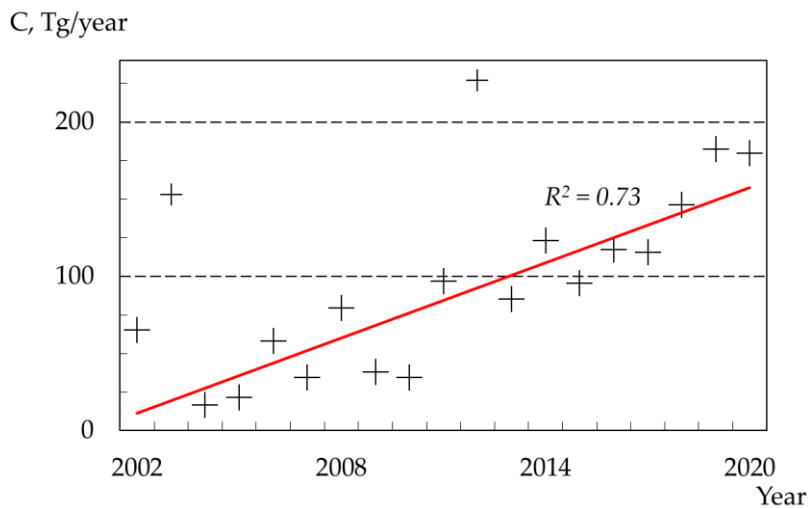


Figure 2. Annual direct carbon emission estimates for 2002–2020 and linear trend of rising ($R^2=0.73$) for the territory of Siberia.

Table 2. Carbon emission estimates per year (Tg C/year) and per ha (ton C/ha) in Siberia (range for moderate and extreme fire seasons).

Tree stand type	Tg C/year	t C/ha	% of annual emission (min–max)
Larch	43.0–52.0	15.5–18.8	51.6–62.4
Pine	11.0–12.0	16.7–18.0	13.2–14.2
Dark coniferous	1.9–3.1	12.7–20.4	2.3–3.7
Deciduous/mixed	3.8–5.0	13.7–17.5	4.5–5.7

Our estimates are significantly lower than the previous extreme assessments for Siberian fires, which were from 116 Tg C/yr in 1999 up to >500 Tg C/yr in 2002, obtained by Soja et al. (2004) [6]. However, the long-term dynamics of carbon emissions shows a positive trend corresponding to rising of forest burning in Siberia [24,25]. Thus, under conditions of air temperature rising [26], we should expect a correlation between the fire emissions and climate change. Current relation [27] was used for forecasting of emission level under available climate scenarios [28]. In case of RCP2.6 scenario the average air temperature increasing by 0.3–1.7°C; in case of “harsh” scenario (RCP8.5) the temperature rising by 2.6–4.8°C [28]. Thus according to current trends (Fig. 1, b), the fire emissions in Siberia may reach 220–700 Tg C/yr at the end of 21st century. While extreme value of 2300 Tg C/yr was evaluated for the conditions of “harsh” scenario [15,24,27].

4. Conclusions

Proposed improvement of method for the burned area accounting allowed to evaluate the range of direct fire emissions as 20–250 Tg C/yr. However, according to the current temperature trend as well as to the current forest burning trend in Siberia, the carbon emissions from fires may double (220 Tg C/yr) or even increase by an order of magnitude (>2000 Tg C/yr) at the end of the 21st century, which is depended from IPCC (The Intergovernmental Panel on Climate Change) scenario. Thus, the impact of fire emissions on air quality in Siberia is likely to become more significant in the short term.

Funding: This research was funded by the Russian Foundation for Basic Research, Government of the Krasnoyarsk region, Krasnoyarsk Regional Science Fund, grant number 17-41-240475, 18-41-242003.

Acknowledgments: Equipment was used of the Laboratory of Space Systems and Technologies and the Center of Collective Use, Federal Research Center “Krasnoyarsk Science Center SB RAS” (Krasnoyarsk, Russia).

Conflicts of Interest: The author declare no conflict of interest.

References

1. Conard, S.G.; Sukhinin, A.I.; Stocks, B.J.; Cahoon, D.R.; Davidenko, E.P.; Ivanova, G.A. Determining effects of area burned and fire severity on carbon cycling and emissions in Siberia. *Climatic Change* **2002**, *55* (1–2), 197–211.
2. McRae, D. J.; Conard, S. G.; Baker, S. P.; Samsonov, Yu. N.; Ivanova, G. A. Fire emissions in central Siberia. *The Canadian Smoke Newsletter*. Fall **2009**, 9–13.
3. Bondur, V.; Gordo, K.A.; Kladov, V.L. Spacetime Distributions of Wildfire Areas and Emissions of Carbon-Containing Gases and Aerosols in Northern Eurasia according to Satellite-Monitoring Data. *Izvestiya, Atmospheric and Oceanic Physics* **2017**, *53*, 859–874.
4. Ponomarev, E.I.; Shvetsov, E.G.; Kharuk V.I. The Intensity of Wildfires in Fire Emissions Estimates. *Russian Journal of Ecology* **2018**, *49*, 6. 492–499. doi: 10.1134/S1067413618060097.
5. Panov, A.V.; Prokushkin, A.S.; Bryukhanov, A.V.; Korets, M.A.; Ponomarev, E.I.; Sidenko, N.V.; Zrazhevskaya, G.K.; Timokhina, A.V. A Complex Approach for the Estimation of Carbonaceous Emissions from Wildfires in Siberia. *Russian Meteorology and Hydrology* **2018**, *43*, 5, 295–301. doi: 10.3103/S1068373918050035.
6. Soja, A.J.; Cofer, W.R.; Shugart, H.H.; Sukhinin, A.I.; Stackhouse, Jr. P.W.; McRae, D.J.; Conard, S.G. Estimating fire emissions and disparities in boreal Siberia (1998–2002). *J. Geophys. Res.* **2004**, *109*, D14S06. doi: 10.1029/2004JD004570.

7. Ivanova, G.A.; Ivanov, V.A.; Kukavskaya, E.A.; Conard, S.G.; McRae, D.J. Effect of Fires on Carbon Emission in the Pine Forests of Middle Siberia. *Sib. J. Ecol.* **2007**, *14*, 885–895. (In Russian).
8. Shvidenko, A.Z.; Shchepashchenko, D.G.; Vaganov, E.A.; Sukhinin, A.I.; Maksyutov, S.; McCallum, I.; Lakyda, I.P. Impact of wildfire in Russia between 1998–2010 on ecosystems and the global carbon budget. *Dokl. Earth Sci.* **2011**, *441*, 1678–1682, doi:10.1134/S1028334X11120075.
9. Kukavskaya, E.; Soja, A.; Petkov, A.; Ponomarev, E.; Ivanova, G.; Conard, S. Fire Emissions Estimates in Siberia: Evaluation of Uncertainties in Area Burned, Land Cover, and Fuel Consumption. *Can. J. For. Res.* **2013**, *43*, 493–506, doi:10.1139/cjfr-2012-0367.
10. Bartalev, S.A.; Stytsenko, F.V.; Egorov, V.A.; Loupian, E.A. Satellite assessment of fire-caused forest mortality in Russia. *Forestry (Lesovedenie)* **2015**, *2*, 83–94. (In Russian).
11. Wooster, M.J.; Roberts, G.; Perry, G.L.W.; Kaufman, Y.J. Retrieval of biomass combustion rates and totals from fire radiative power observations: FRP derivation and calibration relationships between biomass consumption and fire radiative energy release. *J. Geophys. Res.* **2005**, *110*, D24311. doi: 10.1029/2005JD006318.
12. Ichoku, C.; Kaufman, Y.J. A method to derive smoke emission rates from MODIS fire radiative energy measurements. *IEEE Trans. Geosci. Remote Sens.* **2005**, *43*, 2636–2649.
13. Vermote, E.; Ellicott, E.; Dubovik, O.; Lapyonok, T.; Chin, M.; Giglio, L.; Roberts, G.J. An approach to estimate global biomass burning emissions of organic and black carbon from MODIS fire radiative power. *J. Geophys. Res.* **2009**, *114*, 1–22, doi:10.1029/2008JD011188.
14. Amiro, B.; Cantin, A.; Flannigan, M.; de Groot, W. Future Emissions from Canadian boreal forest fires. *Can. J. For. Res.* **2009**, *39*, 383–395. doi: 10.1139/X08-154.
15. Zamolodchikov, D.G.; Grabovskii, V.I.; Kraev, G.N. Dynamics of Carbon Budget in Forests of Russia for Last Twenty Years. *Forestry* **2011**, *6*, 16–28. (In Russian).
16. Balashov, I.; Bartalev, S.; Burtsev, M.; Vorushilov, I.; Egorov, V.; Kashnitskii, A.; Khovratovich, T.; Khvostikov, S.A.; Kobets, D.; Loupian, E.; Saigin, I.; Senko, K.; Stytsenko, F.V.; Sychugov, I.; Zharko, V. Vega-Les Information System. Actual Features and Future Evolution. *IOP Conference Series: Earth and Environmental Science* **2020**, *507*, 012002. doi:10.1088/1755-1315/507/1/012002.
17. Ponomarev, E.I.; Shvetsov, E.G. Satellite detection of forest fires and geoinformation methods for calibrating of the result. *Issledovanie Zemli iz Kosmosa (Remote Sens.)* **2015**, *1*, 84–91, doi:10.7868/S0205961415010054. (In Russian).
18. Tsvetkov, P.A. Adaptation of Larix gmelinii to Fires in the Northern Taiga of Central Siberia. *Sib. J. Ecol.* **2005**, *1*, 117–129. (In Russian).
19. de Groot, W.J.; Cantin, A.S.; Flannigan, M.D.; Soja, A.J.; Gowman, L.M.; Newbery, A. A comparison of Canadian and Russian boreal forest fire regimes. *For. Ecol. Manag.* **2013**, *294*, 23–34. doi:10.1016/j.foreco.2012.07.033.
20. Ponomarev, E.I.; Shvetsov, E.G.; Litvintsev, K.Yu. Calibration of Estimates on Direct Wildfire Emissions from Remote Sensing Data. *Izvestiya, Atmospheric and Oceanic Physics* **2019**, *55*, 9, 1065–1072. doi:10.1134/S0001433819090408.
21. Seiler, W.; Crutzen, P.J. Estimates of gross and net fluxes of carbon between the biosphere and atmosphere from biomass burning. *Clim. Change.* **1980**, *2*, 207–247. <https://doi.org/10.1007/BF00137988>.
22. Shvetsov, E.G.; Ponomarev, E.I. Postfire Effects in Siberian Larch Stands on Multispectral Satellite Data. *Contemporary Problems of Ecology* **2020**, *13*, 1, 104–112. doi: 10.1134/S1995425520010096.
23. Ponomarev, E.I.; Shvetsov, E.G.; Usataya Y.O. Determination of the Energy Properties of Wildfires in Siberia by Remote Sensing. *Izvestiya, Atmospheric and Oceanic Physics* **2018**, *54*, 9, 979–985. doi: 10.1134/S000143381809030X.
24. Shvidenko, A.Z.; Schepaschenko, D.G. Climate Change and Wildfires in Russia. *Contemporary Problems of Ecology* **2013**, *6*: 50–61. doi: 10.1134/S199542551307010X.
25. Ponomarev, E.I.; Kharuk, V.I.; Ranson, J. K. Wildfires Dynamics in Siberian Larch Forests. *Forests* **2016**, *7*, 125, 1–9. doi:10.3390/f7060125.
26. Ponomarev, E.I.; Kharuk, V.I. Wildfire Occurrence in Forests of the Altai–Sayan Region under Current Climate Changes. *Contemporary Problems of Ecology* **2016**, *9*, 1, 29–36. doi: 10.1134/S199542551601011X.
27. Ponomarev, E.I.; Shvetsov, E.G.; Kharuk V.I. The Intensity of Wildfires in Fire Emissions Estimates. *Russian Journal of Ecology* **2018**, *49*, 6. 492–499. doi: 10.1134/S1067413618060097.

28. IPCC, 2014: Climate Change 2014: Impacts, Adaptation, and Vulnerability. Summaries, Frequently Asked Questions, and Cross-Chapter Boxes. Report of the Intergovernmental Panel on Climate Change; Eds. Field C.B., Barros V., Dokken D.J. et al.; World Meteorological Organization: Geneva, 2014.



© 2020 by the authors. Submitted for possible open access publication under the terms and conditions of the Creative Commons Attribution (CC BY) license (<http://creativecommons.org/licenses/by/4.0/>).