

# IMPLEMENTATION OF CONTENT-BASED IMAGE RETRIEVAL USING ARTIFICIAL NEURAL NETWORKS

Sarath Chandra Yenigalla <sup>1</sup>, Srinivas Rao K <sup>2</sup> and Phalguni Singh Ngangbam<sup>2</sup>

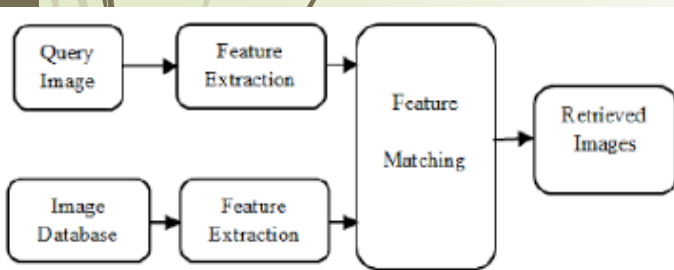
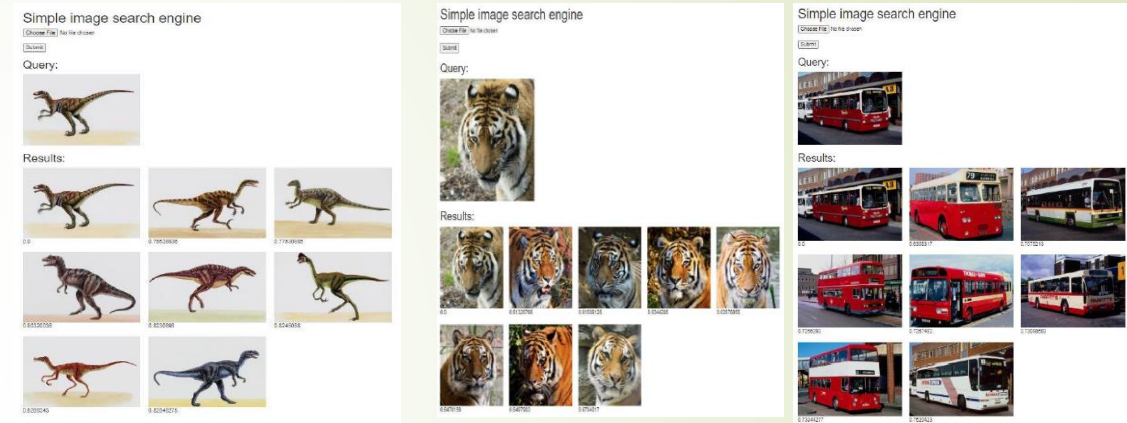
K L Deemed to be University <sup>1,2</sup>

## Introduction

- Image retrieval systems enable the browsing, searching, and retrieval of 26 images from a large database of digital images.
- Image retrieval include 27 the addition of metadata such as captioning, keywords, titles, or descriptions to images, which 28 can be used for retrieval.
- CBIR utilizes computer vision to retrieve images based on similarities in their contents, such as textures, colors, and shapes, to a user-supplied query image or user-specified image features, thereby avoiding the use of textual descriptions.
- Content-based image retrieval (CBIR) is the application of computer vision techniques to the 5 image retrieval problem, which is the challenge of searching for digital images in large 6 databases.
- CBIR is also known as query by image content (QBIC).
- CBIR is opposed to 7 traditional concept-based approaches that rely on metadata such as keywords, tags, or 8 descriptions associated with the image.

## Results and discussion

Retrieved images with Euclidean distance



CBIR Architecture

Table: accuracy of algorithms

Algorithm	Corel 1k	Animal	Dinosaur
KNN	60%	60%	60%
CNN	50%	50%	50%
SVM	80%	80%	80%

Accuracy outputs of SVM,CNN,KNN

```

[INFO] describing images...
[INFO] evaluating raw pixel accuracy...
[INFO] raw pixel accuracy: 80.00%
[INFO] evaluating histogram accuracy...
[INFO] histogram accuracy: 80.00%
  
```

```

[INFO] describing images...
[INFO] evaluating raw pixel accuracy...
[INFO] raw pixel accuracy: 50.00%
[INFO] evaluating histogram accuracy...
[INFO] histogram accuracy: 80.00%
>>> |
  
```

```

[INFO] describing images...
[INFO] evaluating raw pixel accuracy...
[INFO] raw pixel accuracy: 60.00%
[INFO] evaluating histogram accuracy...
[INFO] histogram accuracy: 80.00%
  
```

## Contact

Sarath Chndra Y, Research Scholar, ECE Department, Koneru Lakshmaiah Education Foundation (K L Deemed to be University), Andhra Pradesh; sarathcy2000@gmail.com , Ph.no:8978057647