

# Creating a Comprehensive Landslides Inventory Using Remote Sensing Techniques and Open Access Data

Constantinos Nefros \* and Constantinos Loupasakis

Laboratory of Engineering Geology and Hydrogeology, School of Mining and Metallurgical Engineering, National Technical University of Athens, 9 Heroon Polytechniou St., 15780, Zografou, Athens, Greece; cloupasakis@metal.ntua.gr

\* Correspondence: kostasnefros@central.ntua.gr

**Abstract:** Landslides are natural disasters with a high socio-economic impact on human societies due to the considerable number of fatalities and the destruction of infrastructure that they cause. A comprehensive landslides inventory is vital for reducing this impact, as it can be used in landslides susceptibility studies for the identification of the most prone to landslides subregions of an area, for the evaluation of the landslide precipitation activation thresholds, and subsequently for the determination of the most suitable precautionary measures. Nowadays, remote sensing techniques are widely used by scientists for creating landslides inventories, as they can be rapidly applied to identify landslides along with their spatial characteristics. Nevertheless, besides these characteristics, a comprehensive inventory must also include the time of their activation and the factors that led to their activation. These elements can be quite difficult to specify, especially in areas where official landslide data do not exist, such as in countries that do not have a published national landslides inventory. The objective of this research study is to provide a framework for the creation of a comprehensive landslides inventory by combining open-access or publicly available data with remote-sensing data and techniques. The Chania regional unit in the western part of Crete Island, Greece, was selected as the study area. Our study presents how a complete landslides inventory, consisting of 236 landslides, was established based on differential interferometry synthetic aperture radar (DInSAR) techniques and open-access or publicly available data. This framework can significantly contribute to scientific research on landslide susceptibility in countries that lack a comprehensive landslides inventory. Moreover, it highlights the potential of remote-sensing techniques and open-access data in improving our understanding of landslide activation mechanisms.

**Keywords:** remote sensing; DInSAR; landslides; precipitation; open-access data; landslides inventory

**Citation:** To be added by editorial staff during production.

Academic Editor: Firstname Last-name

Received: date

Revised: date

Accepted: date

Published: date



**Copyright:** © 2023 by the authors. Submitted for possible open access publication under the terms and conditions of the Creative Commons Attribution (CC BY) license (<http://creativecommons.org/licenses/by/4.0/>).

## 1. Introduction

Landslides are complex geological phenomena whose activation mechanisms differ significantly from region to region and over time [1]. Their complexity, coupled with their typically devastating consequences, has stimulated scientific interest in developing accurate and reliable techniques for rapidly identifying and assessing the most vulnerable subregions facing the highest landslide risk. This assessment is crucial as it enables stakeholders to apply efficient and spatially focused protective measures, thus reducing the impact of landslides in case of potential activation.

Many scientific research studies employ multi-criteria decision analysis methods (MCDA) [2–4] to identify the most susceptible subregions within an area due to their efficiency and rapid applicability [5]. In these studies, the availability of a comprehensive landslides inventory is essential, as it can be used either during the application of the method or during the evaluation of its effectiveness. More specifically, in a MCDA method, a landslides inventory is usually used for the identification of the most critical

causal factors and the evaluation of their relative contribution (weight) (e.g., during the frequency ratio (FR) method). In such cases, the inventory must include the maximum possible of the landslides occurred in the Area of Interest (AOI), as this parameter directly impacts the efficacy of the applied method.

Moreover, a complete landslides inventory is crucial in studies that evaluate the intensity duration (ID) precipitation activation thresholds of an area [6]. Evaluating these thresholds requires information about the temporal characteristics of the landslides, besides their spatial characteristics. This includes details such as the exact date of their activation and the duration of the accumulated precipitation that led to these activations [7].

In some countries, a national landslides inventory does not exist, despite the frequent occurrence of intense landslides that result in many fatalities and the destruction of critical infrastructure [8]. In such cases, scientists often attempt to create a landslides inventory based on open-access landslides geodatabases, such as the Global Landslide Catalogue (GLC) [9], and remote sensing techniques, such as the differential interferometry synthetic aperture radar (DInSAR) methods [10]. However, the level of detail and completeness of these inventories is often low due to two main reasons. Firstly, some geodatabases are spatially based, primarily containing landslides activated close to residential areas and critical infrastructure, including only a small number of landslides activated in remote or difficult-to-access areas [10]. Secondly, using remote sensing techniques alone does not automatically lead to a complete landslides inventory. It additionally requires supplementary data on other landslide characteristics such as the exact date of activation and the prevailing causal factors.

The object of this study is to develop a framework that integrates a DInSAR method with existing methodologies and open-access data to establish a comprehensive landslides inventory. The proposed framework was applied in the Chania regional unit, in western Crete, Greece, which was selected as a case study area.

## 2. Data and Methods

The methodological framework proposed by this study is depicted in Figure 1. As shown, in order to create a complete landslides inventory, the spatial and temporal characteristics of the landslides were combined with the prevailing factors that triggered their activation. The framework consists of three main steps.

In the first step, the spatial characteristics of the landslides, such as their location, orientation, and extent, are determined by employing the Parallelized Persistent Scatterer Interferometry (P-PSI) method, which can speed up the whole process by a factor of five [11]. A detailed analysis of the processing of Sentinel 1 images with the P-PSI method for landslide evaluation and monitoring is provided by [11,12]. The results from the P-PSI method are then further combined with open-access data, specifically focusing on each identified landslide. These data sources include true-color satellite images, open-access geodatabases, street view images, landslide data from national services, in situ investigations, and other sources, such as studies, technical reports, newspapers, and social media.

Besides the identification and verification of the landslides, open-access data also contributes to the estimation of the approximate time of the landslides' activation. However, the exact date is determined in the second step, as shown in Figure 1, by using the precipitation records from a dense network of meteorological stations. These data are used to evaluate the precise date of activation of each landslide.

In the third step, an MCDA method is applied using the identified location of each recorded landslide and the geomorphological characteristics of the AOI in a GIS environment. Thus, the causal factors for each landslide are evaluated and integrated into the resulting landslides inventory.

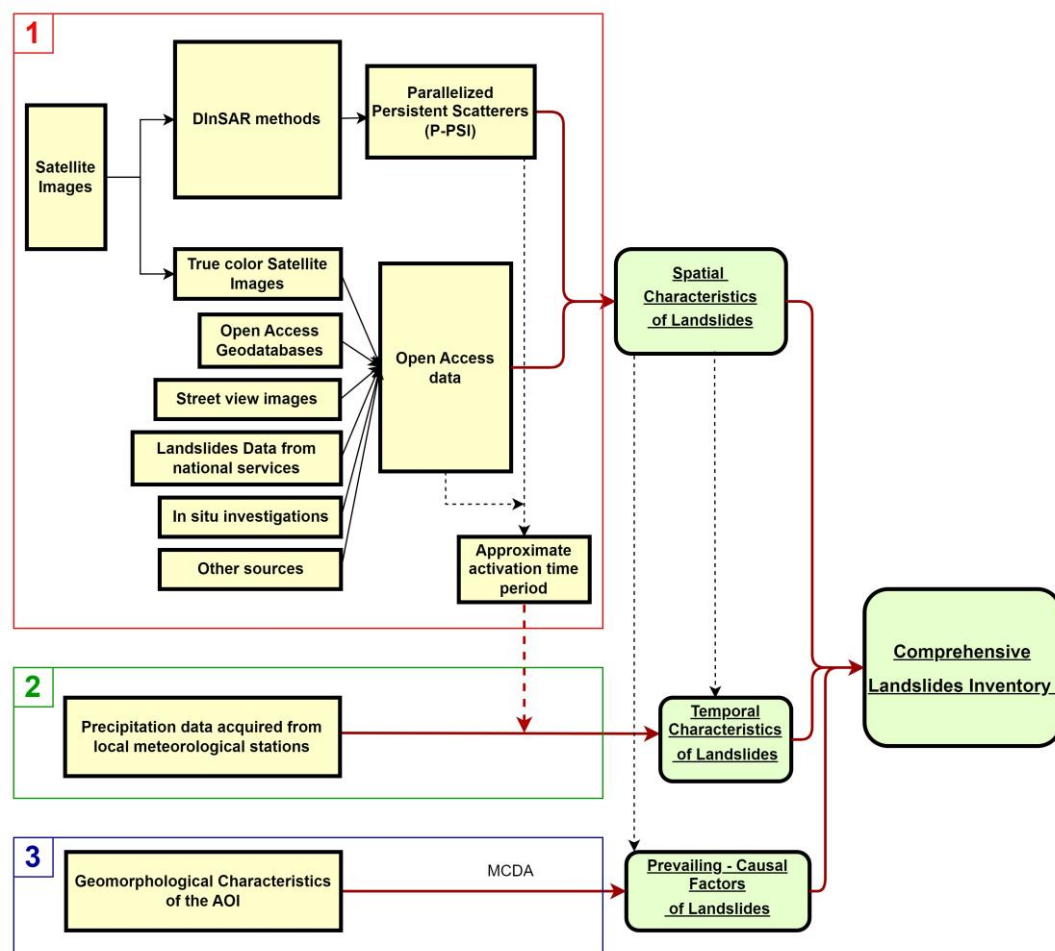


Figure 1. Outline of the proposed framework.

### 3. Results

The proposed framework was applied to the Chania regional unit, Crete Island, Greece, to analytically present each individual step and highlight its applicability. The outcomes of each step are analyzed in the following paragraphs.

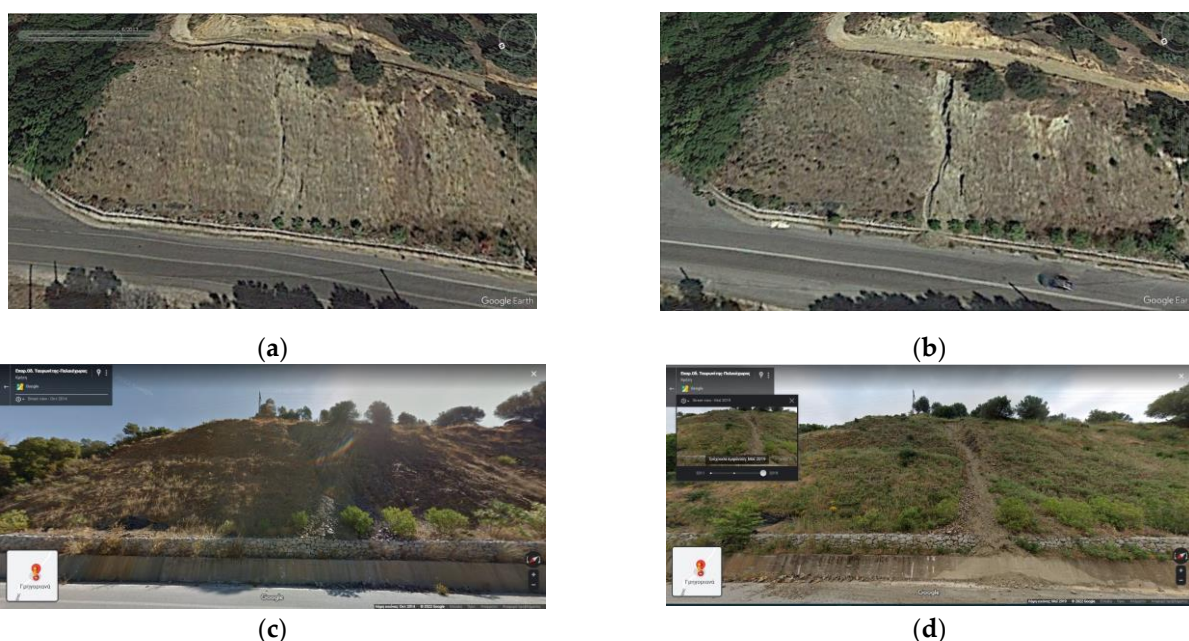
#### 3.1. Spatial Characteristics of the Landslides

By using Sentinel 1 satellite images and the P-PSI technique, 290.000 Persistent Scatterers (PS) were identified for the ascending orbit and 380.000 PS for the descending orbit, in the AOI. Based on the resulting PS Line of Sight (LOS) displacements and the visual data acquired for these locations, 236 new landslides were identified. For instance, as illustrated in Figure 2, based on LOS displacements in the Kandanos region, a landslide was initially identified. Subsequently, as shown in Figure 3, the landslide was verified using Google Earth historical images and street view images. Additionally, an approximate time range for the landslide’s activation was established.

Figure 2 provides an example in which satellite images were combined with visual data to identify and document a landslide along the road network connecting Kandanos village with Grigoriana village, within the AOI.



**Figure 2.** Identifying a landslide using P-PSI method



**Figure 3.** Identifying a landslide in Kandanos region, in the Chania regional unit, Crete-Island, Greece. Images (a) and (b) were taken from the Google Earth satellite view in 2013 and 2019 respectively. Visual data were provided by google street view in 2014 for (c) and 2019 for (d). [12]

### 3.2. Temporal Characteristics of the Landslides

After assessing the approximate time frame of a landslide’s activation, the determination of the exact date ensues. In the examined landslide depicted in Figures 2 and 3, technical reports from the Hellenic Survey of Geology and Mineral Exploration (HSGME) and the precipitation values from the meteorological stations of the National Observatory of Athens (NOA) were used to determine that this landslide was activated on 24-26 February 2019.

### 3.3. Assessment of the Prevailing – Causal Factors of the Landslides

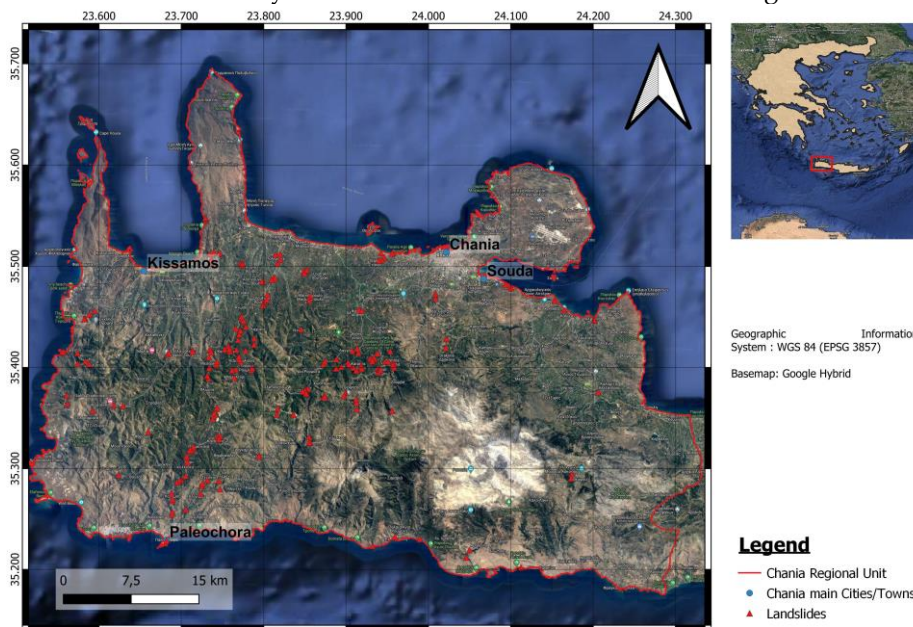
As illustrated in Figure 1, after the geographic location of a landslide event has been determined using the procedure described in the previous step, an MCDA method must be applied to assess the geomorphological factors that led to the activation of the landslide. In our case, the Analytical Hierarchy Process (AHP) method was applied, and we identified the following as the most critical causal factors: mean annual precipitation, lithology,



land use/land cover (LU/LC), distance from road network, distance from stream network, slope angle, slope aspect, and relative relief.

#### 4. Discussion

As demonstrated, the proposed framework has proven to be highly effective, as it has led to the creation of a comprehensive landslides inventory, which includes 236 landslides in the AOI. The newly identified landslides are illustrated in Figure 3.



**Figure 3.** Creating a Comprehensive Landslides’ Inventory for the Chania regional unit.

This is very significant, especially in countries like Greece, where a landslides inventory does not exist. Furthermore, this inventory can lead to a rapid assessment of the landslide susceptibility of the AOI, as it also includes the application of an MCDA method as the last step of the process. Based on the identified landslides and the landslide susceptibility derived by applying the proposed framework, stakeholders can make well-informed decisions regarding the adoption and implementation of appropriate measures in the subregions that face the highest landslide susceptibility. Furthermore, the evaluation of the geomorphological characteristics that activated the landslides helps scientists determine the kind of measures required to mitigate their impact.

#### 5. Conclusions

Creating a comprehensive landslides inventory can be a rather difficult and demanding procedure. The recommended framework provides a guide that can facilitate and standardize the whole process, as it can lead to the rapid and efficient identification of the spatial and temporal characteristics of landslides in the AOI, along with their causal factors. Thus, it contributes to the establishment of a complete landslide inventory, even on extended and difficult to reach areas. The application of the framework to the Chania regional unit highlighted its effectiveness, resulting in the identification of 236 new landslides.

**Author Contributions:** Conceptualization, C.N. and C.L.; methodology, C.N.; software, C.N.; validation, C.N. and C.L.; formal analysis, C.N.; investigation, C.N.; resources, C.N.; data curation, C.N.; writing—original draft preparation, C.N.; writing—review and editing, C.N. and C.L.; visualization, C.L.; supervision, C.L.; project administration, C.N. All authors have read and agreed to the published version of the manuscript.

**Funding:** This research received no external funding.

**Data Availability Statement:** The data used to support the findings of this study are available from the corresponding author upon reasonable request.

**Acknowledgments:** Sentinel-1 images were processed with the P-PSI processing chain in the Operational Unit Center for Earth Observation Research and Satellite Remote Sensing BEYOND of the Institute of Astronomy and Astrophysics, Space Applications and Remote Sensing of the National Observatory of Athens (BEYOND).

**Conflicts of Interest:** The authors declare no conflicts of interest.

## References

1. van Westen, C.J.; van Asch, T.W.J.; Soeters, R. Landslide Hazard and Risk Zonation—Why Is It Still so Difficult? *Bulletin of Engineering Geology and the Environment* **2006**, *65*, 167–184, doi:10.1007/s10064-005-0023-0.
2. Zhao, H.; Yao, L.; Mei, G.; Liu, T.; Ning, Y. A Fuzzy Comprehensive Evaluation Method Based on AHP and Entropy for a Landslide Susceptibility Map. *Entropy* **2017**, *19*, 396, doi:10.3390/e19080396.
3. Psomiadis, E.; Papazachariou, A.; Soulis, K.; Alexiou, D.-S.; Charalampopoulos, I. Landslide Mapping and Susceptibility Assessment Using Geospatial Analysis and Earth Observation Data. *Land (Basel)* **2020**, *9*, 133, doi:10.3390/land9050133.
4. Tavoularis, N.; Papathanassiou, G.; Ganas, A.; Argyrakis, P. Development of the Landslide Susceptibility Map of Attica Region, Greece, Based on the Method of Rock Engineering System. *Land (Basel)* **2021**, *10*, 148, doi:10.3390/land10020148.
5. Psomiadis, E.; Charizopoulos, N.; Efthimiou, N.; Soulis, K.X.; Charalampopoulos, I. Earth Observation and GIS-Based Analysis for Landslide Susceptibility and Risk Assessment. *ISPRS Int J Geoinf* **2020**, *9*, 552, doi:10.3390/ijgi9090552.
6. Nefros, C.; Tsagkas, D.S.; Kitsara, G.; Loupasakis, C.; Giannakopoulos, C. Landslide Susceptibility Mapping under the Climate Change Impact in the Chania Regional Unit, West Crete, Greece. *Land (Basel)* **2023**, *12*, 154, doi:10.3390/land12010154.
7. Nefros Constantinos; Loupasakis Constantinos; Kitsara Gianna Evaluating Landslides' Triggering Precipitation Thresholds, in Regions Affected by Wildfires, Using Public and Open Access Data. The Case of North Peloponnese, Greece. *IOP Conf Ser Earth Environ Sci* **2022**, *1123*, 012008, doi:10.1088/1755-1315/1123/1/012008.
8. Nefros, C.; Loupasakis, C. Introducing a Geospatial Database and GIS Techniques as a Decision-Making Tool for Multicriteria Decision Analysis Methods in Landslides Susceptibility Assessment. *Bulletin of the Geological Society of Greece* **2022**, *59*, 68–103, doi:10.12681/bgsg.29038.
9. Kirschbaum, D.; Stanley, T.; Zhou, Y. Spatial and Temporal Analysis of a Global Landslide Catalog. *Geomorphology* **2015**, *249*, 4–15, doi:10.1016/j.geomorph.2015.03.016.
10. Nefros, C.; Alatza, S.; Loupasakis, C.; Kontoes, Ch. Persistent Scatterer Interferometry (PSI) Analysis for Landslide Detection and Mapping. The Case of Chania Prefecture, Crete Island, Greece 2022. In Proceedings of the 16th International Congress of the Geological Society of Greece; Special Publication BGSG No 10, p.778: Patra, Greece, 2022.
11. Papoutsis, I.; Kontoes, C.; Alatza, S.; Apostolakis, A.; Loupasakis, C. InSAR Greece with Parallelized Persistent Scatterer Interferometry: A National Ground Motion Service for Big Copernicus Sentinel-1 Data. *Remote Sens (Basel)* **2020**, *12*, 3207, doi:10.3390/rs12193207.
12. Nefros, C.; Alatza, S.; Loupasakis, C.; Kontoes, C. Persistent Scatterer Interferometry (PSI) Technique for the Identification and Monitoring of Critical Landslide Areas in a Regional and Mountainous Road Network. *Remote Sens (Basel)* **2023**, *15*, 1550, doi:10.3390/rs15061550
13. Google (n.d.). [Google Street View, Regional Road from Tavronitis to Paleochora, October 2014]. Available online: <https://maps.app.goo.gl/eXVw9e8CniC93xXs7>

**Disclaimer/Publisher's Note:** The statements, opinions and data contained in all publications are solely those of the individual author(s) and contributor(s) and not of MDPI and/or the editor(s). MDPI and/or the editor(s) disclaim responsibility for any injury to people or property resulting from any ideas, methods, instructions or products referred to in the content.