

**Nudia Aufia**  
**Institut Teknologi Bandung**

The diagram illustrates the concept of "Environmental destruction as the central of interlinked issue" within a broader framework.

**Left Panel: Visual Evidence**

- Top left: A photograph of a forest fire with thick smoke.
- Top right: A photograph of a deforested landscape with an excavator and a tree stump.
- Bottom left: A photograph of a flooded area with people in the foreground.
- Bottom right: A photograph of a flooded agricultural field.

**Central Panel: Issue Context and Environmental Destruction**

- A circular flow diagram connects two boxes:
  - issue context** (represented by green and orange squares).
  - Environmental destruction as the central of interlinked issue** (represented by blue and brown squares).

**Right Panel: Framework Diagram**

- A Venn diagram showing three overlapping circles representing different issues:
  - Issue 2 (ECONOMY)** (light blue circle).
  - Issue 1 (SOCIAL)** (light orange circle).
  - Issue 3 (CULTURE)** (light brown circle).
- The central intersection of all three circles is labeled **Main Issue** and **ENVIRONMENT**, with the formula  $v = \frac{S}{t}$ .
- Arrows indicate interactions between the issues and the central environment.
- The diagram is titled **Framework ?**.

[illegible]

**PERCEPT OF BIOLOGICAL DESIGN (INTERACTION)**

**Land timeframe + principle**

**[P1]**  
The Living World is the Matrix for all design

**[P2]**  
Design Should Follow, not Oppose the Laws of Life

**[P3]**  
Biological Equity must Determine Design

**[P4]**  
Design must Reflect Bioregenerality

**[P5]**  
Project Should be Based on Renewable Energy Sources

**[P6]**  
Design Should be Sustainable through the Integration of Living System

**[P7]**  
Design Should be Coevolutionary with the Natural World

**[P8]**  
Building and design Should Heal the Planet

**[P9]**  
Design Should Follow a Sacred Ecology

**Percept of Biological Design**

**ADAPTATION**

**DIVERSIFICATION**

**SUCCESSION**

SETTING IDEATION: THE DESIGN PRINCIPLE

PERCEPT OF BIOLOGICAL DESIGN  
[TODD, 1984]

PERCEPT OF BIOLOGICAL DESIGN

P1 The Living World is the Matrix For All Design	P4 Design must Reflect Bioregionality	P7 Design Should be Cosevolutionary with the Natural World
P2 Design Should Follow, not Oppose the Laws of Life	P5 Project Should be Based on Renewable Energy Sources	P8 Building and Design Should help Heal the Planet
P3 Biological Equity Must Determine Design	P6 Design Should be Sustainable through the Integration of Living System	P9 Design Should Follow a Sacred Ecology

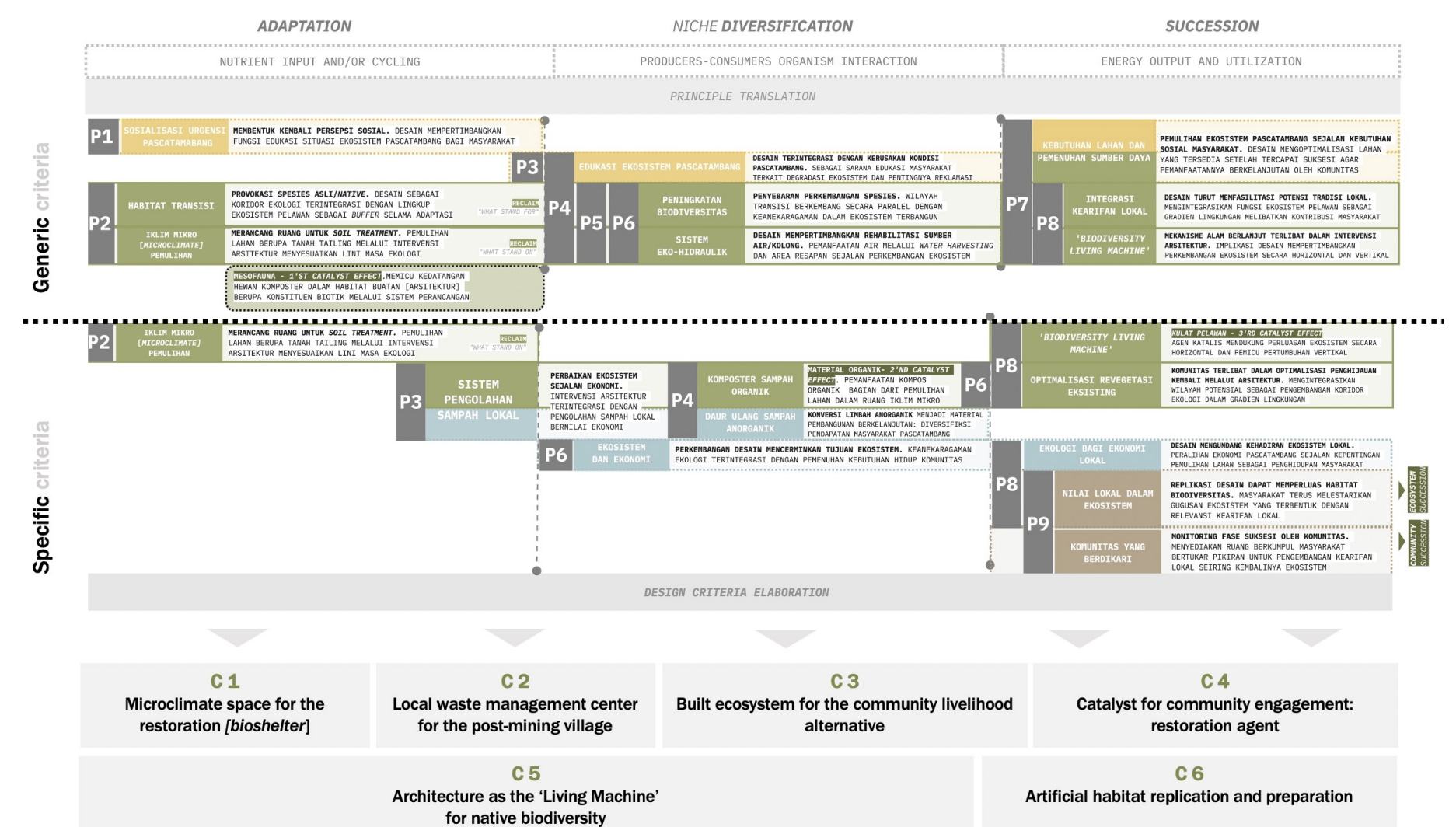
PRINCIPLE EXTRACTION

4 P1 [P1] Foundation to understand a phenomena conditions with the Larger Life	2 3 P3 [P3] Biological design could not be divorced from issues of social justice and social integrity of a given area	1 [P7] Organic world are gaining credibility on the community level can't be done without life only through the process of living
1 P2 [P2] Biology context is the model that mimics closely the working of nature	4 P4 [P4] Architecture has reflecting intelligent organisms and resource criteria	P7 [P7] Obligation to provide enough food for present generations
2 P3 [P3] The entropy progression towards the full extension of place is dependent on soil factors	5 P5 [P5] Nature system diversity applied to building energy resources	P8 [P8] Part of the habitat of organism must be observed. Design triggers a new ecologically complex construction cycle
6 P6 [P6] Biological equity - balanced distribution across of basic resources for poor people	P4 [P4] Small scale issue cause less environmental degradation	4 P8 [P8] In assembly of biotechnologies can serve society directly in evolutionary process of planetary healing
7 P7 [P7] Between the basis of dynamic process which has critically no control	P4 [P4] Biological design must consider values of the needs of the inhabitants for sustainable development	P9 [P9] Assemblage of biotechnologies can serve society directly in evolutionary process of planetary healing
1 P8 [P8] Between the basis of dynamic process which has critically no control	P4 [P4] Community undertaking to diversify the employment base of the area	P9 [P9] Profoundly religious interpreted of human destiny as multifacility in the material development environment prelateness
2 P6 [P6] Trust partnership between people and land bring long lived integration of diversified	P4 [P4] Community undertaking to diversify the employment base of the area	P9 [P9] Community in regard to a vision played up the commitment to a sacred ecology. Movement through the transformative process of evolution, into spirit.

SETTING FOR THE IMPLEMENTATION

[illegible]

The implementation of the principles formulated in the ecological timeline is the initial framework for determining the priorities and capabilities of the community to pursue reclamation based on site design. There are two overview of what would happen if the general design criteria (C) were applied: specific and generic. This classification is expected to help the community in mapping resources more coherently with the context of post-mining conditions, adjusting the potential according to their respective regions.



Understand the desertification caused by the post-mining aftermath are linked within the other aspect that might be vary from one place to another, this framework try to provide an approach which could track the void. Restoration failure due involving different background of culture would be possible to handle as long as still following how the phase of land to heal itself. The intervention is build on default of nature.

[1] Boughey, A. S. (1971): *Man and the Environment: An Introduction to Human Ecology and Evolution*, The Macmillan Company, New York, 1-18. [2] Todd, John, Todd, N. (1984): *Bioshelters, Ocean Arks, City Farming: Ecology as the Basis of Design*. Sierra Club Books. San Francisco. 19-79.