

IMPACT OF MASS TREATMENT WITH PRAZIQUANTEL AMONG STUDENTS OF TSANGAYA SCHOOLS IN KURA LOCAL GOVERNMENT, KANO STATE

Sharif Alhassan Abdullahi, Hauwa'u Barde Abdullahi, Abdulsalami Yayo Manu, Maryam Lawal Faragai, Na'ima Abubakar Adam, Zainab Ali Adamu, Mansur Aliyu, Muhammad Ibrahim Getso, Al-Mukhtar Yahuza Adamu, Iman Maikano Khalid, Hannatu Salisu Ladan

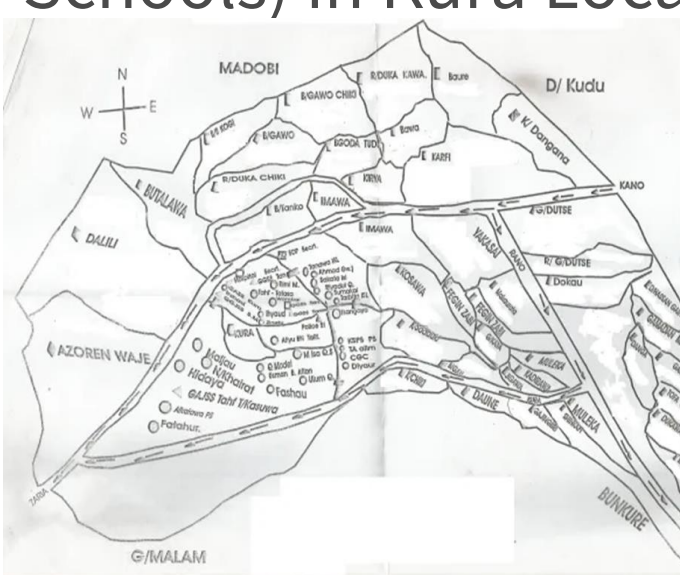
Department of Medical Microbiology and Parasitology, Faculty of Basic Clinical Sciences, College of Health Sciences, Bayero University Kano, Kano P.M.B. 3011, Nigeria

INTRODUCTION & AIM

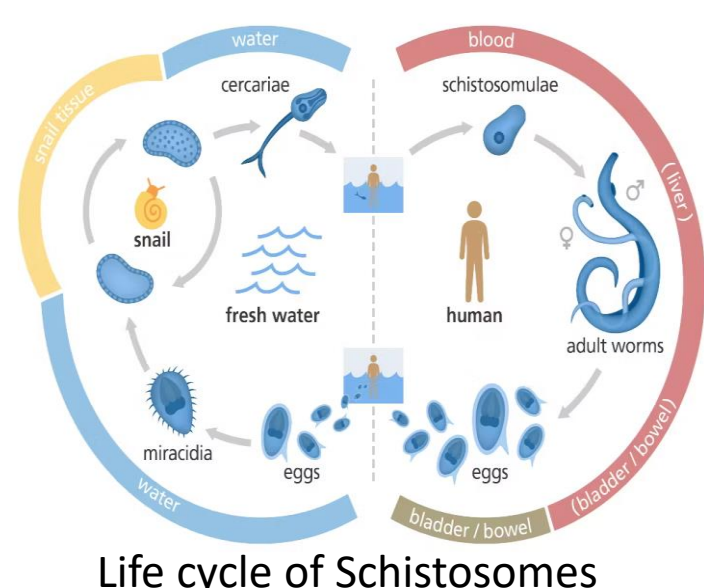
Schistosomiasis is reported to be one of the most important worm infestations of mankind and is widely distributed over three continents, affecting more than 200 million people.

Mass administration of praziquantel has taken place in many centers focusing only on children attending public schools, thus neglecting Almajiri pupils engaged mainly in religious education.

The purpose of this study was to assess the impact of mass treatment with praziquantel among students of Tsangaya School (Almajiri Schools) in Kura Local Government, Kano State, Nigeria.



Map of Kura Local Government



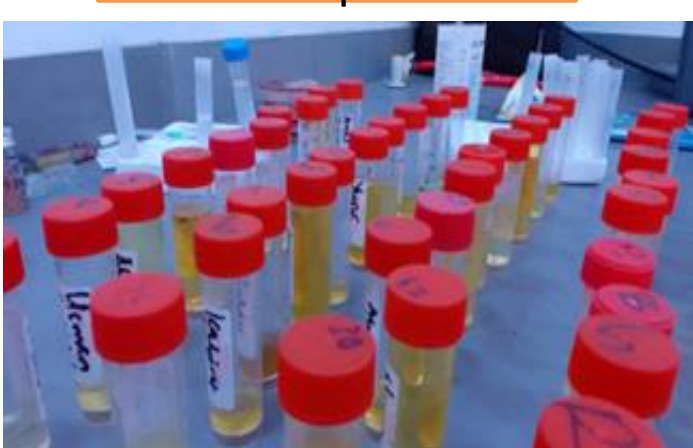
Life cycle of Schistosomes



Almajiri at Tsangaya School

METHOD

Collection of Urine samples



Urinalysis

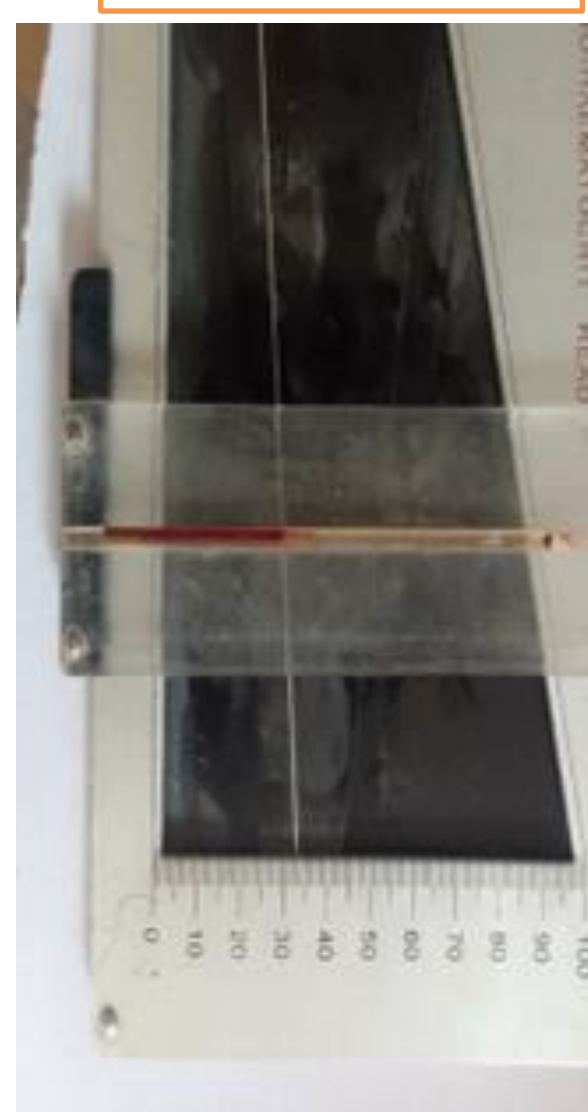


Administration of Praziquantel to Almajiri Students that are Positive to Schistosoma eggs



Recruitment of Almajiri Student

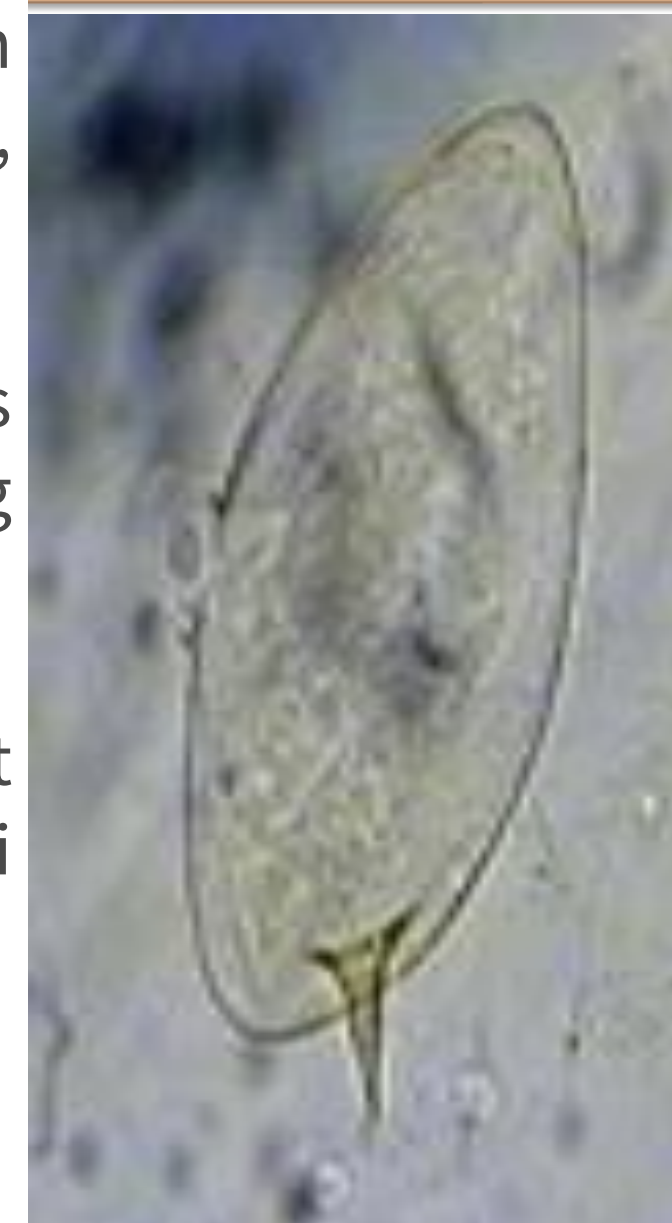
Packed Cell Volume



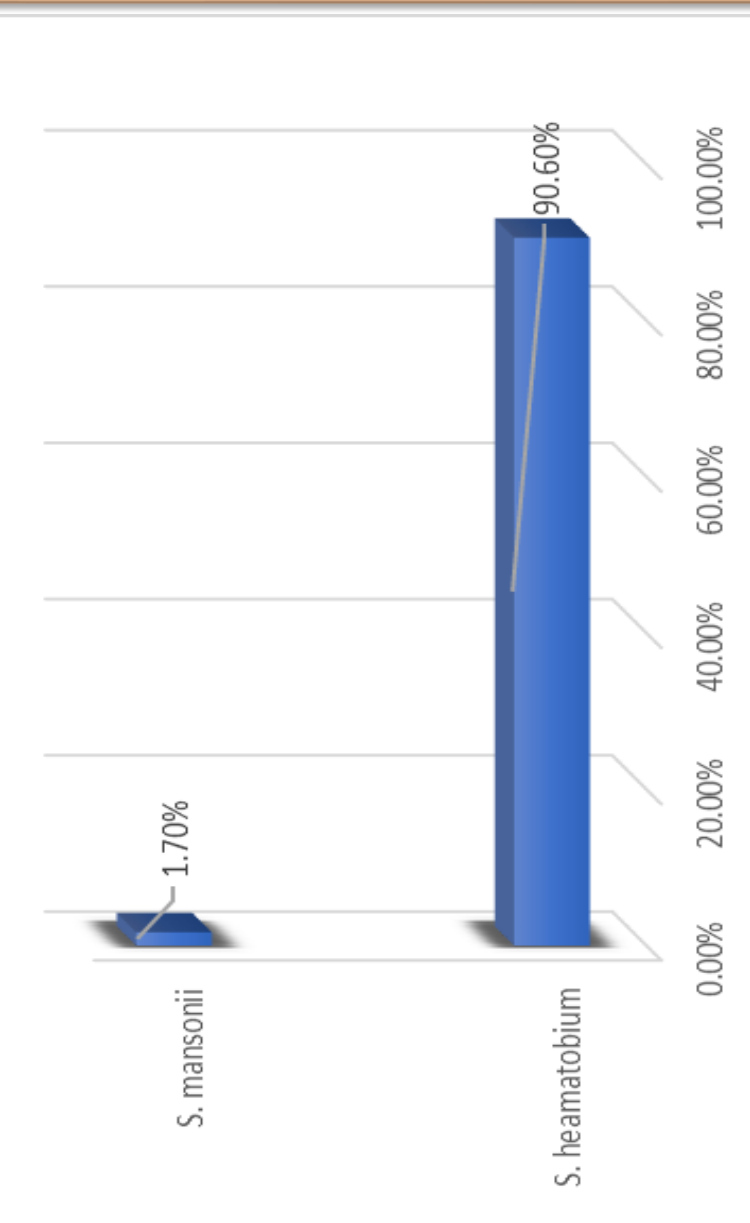
Microscopy



RESULTS & DISCUSSION



S. mansoni



Prevalence of Schistosoma eggs



S. haematobium

Schools	Infection status before intervention			Infection status after intervention		
	Number examined n(%)	Negative n(%)	Positive n(%)	Number treated n(%)	Negative n(%)	Positive n(%)
Tsangaya A	60(33.2)	5(2.7)	55(30.4)	55(33.5)	44(26.8)	11(6.7)
Tsangaya B	51(28.2)	6(3.3)	45(24.9)	45(27.4)	40(24.4)	5(3.1)
Tsangaya C	40(22.0)	3(1.7)	37(20.4)	37(22.6)	32(19.5)	5(3.1)
Tsangaya D	30(16.6)	3(1.7)	27(14.9)	27(16.5)	25(15.2)	2(1.2)
Total	181(100)	17(9.4)	164(90.6)	164(100)	141(85.9)	23(14.1)

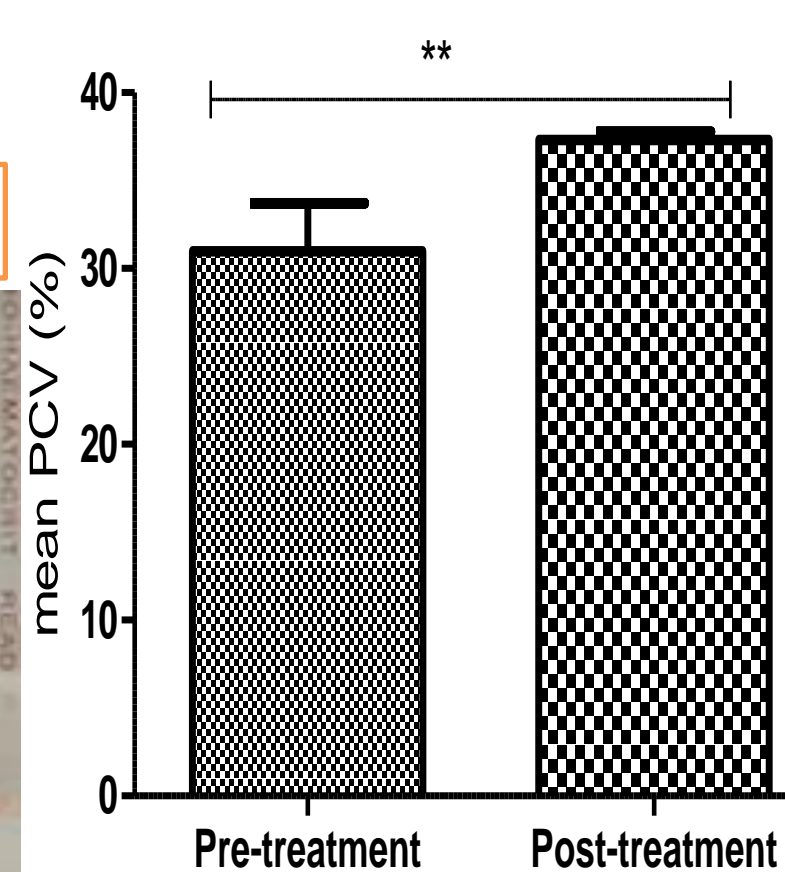


Fig. 1: Mean PCV comparison between pre-and post-tr there is significant difference in the mean PCV at P=0

Duration of Stay	B	S.E(B)	p-value	Exp (B) [95% CI]
Constant	-21.203			
≤1 year	0.965	0.801	0.028	2.65 [0.54-12.61]
2-10 year	18.245	58.750	0.032	8.39 [0.43-11.43]
>10 year	0.488	0.995	0.014	1.63 [0.23-11.45]

CONCLUSION

This study showed that urinary schistosomiasis was prevalent among students of Tsangaya schools and that praziquantel is effective.

There is a need for health education in this community.

FUTURE WORK / REFERENCES

Ahmad, A. G. and Bagwai, M. A. (2024). Prevalence of Urinary Schistosomiasis among Primary School Pupils in Riverine Community of Garko Local Government Area, Kano State, Nigeria. *Sahel Journal of Life Sciences FUDMA*, 2(1): 143-149.

Anosike, J. C., Oguwuike, U. T., Nwoke, B. E., Asor, J. E., Ikpeama, C. A., Nwosu, D. C., and Ogbusu, F. I. (2006). Studies on vesical schistosomiasis among rural Ezza farmers in the southwestern border of Ebonyi State, Nigeria. *Annals of Agricultural and Environmental Medicine*, 13(1).