

Proceedings

Design of Cellulose Interfaces through Self-Assembly of Adhesive Peptides with Intrinsic Stress Sensitive Properties [†]

Pieter Samyn

Institute for Materials Research (IMO-IMOMEC), Applied and Analytical Chemistry, University of Hasselt, 3500 Hasselt, Belgium; pieter.samyn@uhasselt.be; Tel.: +32-11-26-84-95

[†] Presented at the First International Conference on “Green” Polymer Materials 2020, 5–25 November 2020; Available online: <https://cgpm2020.sciforum.net/>.

Published: 3 November 2020

Abstract: The design of interfaces in green polymer composites is a crucial factor in ensuring mechanical strength in composite materials. While cellulose fibers have high intrinsic mechanical strength, their reinforcing effect in polymer composite materials highly relies on the creation of a tight interface with the surrounding polymer matrix. In parallel, the hydrophilicity of the cellulose has to be compatibilized with often more hydrophobic polymer matrixes. In this study, the cellulose interface has been modified by the self-assembly of polymer-peptide nanoparticles regulating the adhesive strength in the interface. The incorporation of catecholic groups allows physical adsorption at the cellulose surface in parallel with the mimicking of mussel-inspired adhesion in presence of dopamine groups. In this study, the cellulose surface modification has been performed with different concentrations of the adhesive nanoparticles, observing interesting trends in adhesive forces at macroscale length. The macroscale adhesion was characterized by single-fiber pull out tests indicating an optimum concentration of nanoparticles at the surface to provide high adhesive interface strength. In addition, the nanoparticles show colorimetric and fluorescent response to mechanical shear stresses providing an evaluation tool to explore the interface phenomena upon failure.

Keywords: cellulose; interphase; adhesion; sensing

1. Introduction

A main hurdle in regulating the performance of green polymer composites and/or fibrous non-woven materials consists of the control of interactions at the level of fiber/matrix or fiber/fiber interface. The chemical interactions between both the continuous matrix phase and the dispersed reinforcing phase are regulated in polymer composites through the interphase compatibilization after chemical modification of the fiber. In particular, the strong hydrophilic properties of natural cellulose fibers owing to the intrinsic abundance of hydroxyl groups at the fiber surface provides reactive sites for easy access of chemical modification. The modification of cellulose fibers are often done by traditional chemical grafting reactions, including a variety of chemicals. In view of not interfering with the bio-based content of “green materials” as filler or matrix, innovative ways for controlling the interface are needed. The examples for control of adhesive properties are found in natural environments such as mussels, where the attachment of a mussel byssal thread to different surfaces is controlled by the secretion of peptides including high concentrations of dihydroxy-phenyl alanine (dopa) [1]. The mechanisms for strong adhesion of catechol groups have been widely studied in latest latest years [2], and the reactivity of cellulose surfaces towards the catechol groups was demonstrated

through grafting reactions [3]: after modification of cellulose surfaces with dopamine functional groups, it was used in various applications of adhesives, or biomedically compatible surfaces.

In order to get further insight in the performance and failure prediction of interfaces, the localization of shear stresses should be narrowly controlled with a homogeneous distribution over the fiber surface. However, it is often difficult to have access to the internal shear stresses at the fiber/matrix or fiber/fiber interfaces and therefore, intrinsic stress sensitivity can bring local access. Many chemical functionalities may provide stress-sensitive functional groups, in particular due to the reorganization of the electronic structure within conjugated chemical bonds. In green materials such as lipid-like linear chains with conjugated triple bonds (e.g., diacetylenic chains), the structure is known to be sensitive to color change and/or fluorescence [4], depending on the conformation of the triple bonds that is influenced by external chemical and/or biological environment, temperature, pH or mechanical stress. Therefore, the coupling of adhesive groups to diacetylenic chains may result in the formation of a polymer-peptide conjugate with both adhesive and stress sensitive properties.

In this paper, we build further on the previously synthesized polymer-peptide amphiphiles with adhesive head groups and their organization into nanoscale polymer vesicles [5]. In future applications they can be interestingly applied as a “green” interface mediator in cellulose-based composite materials. Therefore, the feasibility and mechanical performance of different interface designs is evaluated through the variation of the conformation of the single amphiphiles and/or composition and morphology of the polymer vesicles. It seems that the concentration of dopa-groups significantly affect the interface morphology and hence adhesive properties. Therefore, an extensive screening study has been done on systematically varying the concentration of adhesive groups at the cellulose fiber surface. In addition, the failed adhesive interfaces are characterized and seems to show fluorescence at the surface corresponding to localized shear stresses, indicative for premature failure.

2. Experimental Details

2.1. Materials

In first step, the polymer-peptides (TDA-DOPA, i.e., tricosadiynoic acid – dihydrox-phenylalanine) with adhesive functional group were manually synthesized according to a previously established protocol [5]. The dopamine moieties were incorporated into a polymer-peptide amphiphile with dopamine-like headgroup (hydrophilic part) and diacetylene fatty acid tail (hydrophobic part). The adhesive amphiphiles (Figure 1a, structure (i)) were obtained by manual solid-phase peptide synthesis with Fmoc protecting groups starting from 10,12-tricosadiynoic acid (TDA) and Fmoc-protected (L-3,4-di-hydroxy-phenylalanine) (acetimid)-OH. An intermediate spacer of Fmoc-NH-(PEG)₂-OH was inserted between the head group and peptide ligand head group.

In second step, the polymer-peptides (TDA-CH₃, i.e. tricosadiynoic acid–methyl) with neutral methylated head-group were manually synthesized through the coupling of 10,12-tricosadiynoic acid with a glycine methyl ester (H-Gly-OMe₃HCl), as before [5]. The neutral amphiphiles (Figure 1a, structure (ii)) were synthesized in a dimethyl formamide solution from dissolved 10,12-tricosadiynoic acid, modifying the carboxylic head group into a methyl ester group.

The both amphiphiles were combined into vesicular structures through self-assembly mechanism (Figure 1a, structure (iii)), including the different ratios of both amphiphiles. Therefore, various molar ratios of the TDA-DOPA and TDA-CH₃ amphiphiles were combined by dissolving them in chloroform and removal of the solvent by drying under vacuum conditions. The materials were consequently swollen by adding de-ionized water into the vials and heating near the melting temperature of the amphiphiles of about 70 °C. The heated mixtures were treated with a tip-sonicator and after a cooling period of 6 h at 4 °C, the arranged amphiphiles were polymerized into vesicular structures under UV irradiation at a wavelength of 250 nm for 90 s. The polymerization reaction induces the 1,4-addition reaction between the unsaturated triple bonds in the TDA groups, and causes the morphological stabilization of the vesicular structures with a diameter of around 100 nm. As such, the stable vesicles were made with following composition, containing a variation in molar ratio of constituting amphiphiles TDA-DOPA/TDA-CH₃ = 0/100, 10/90, 20/80, 35/65 and 100/0. In this

series, the content of adhesive catechol groups steadily increases. The aqueous stock solutions with different concentrations of vesicles were prepared by consequent dilution with de-ionized water towards vesicle concentrations of $c = 0.015, 0.03, 0.06, 0.125$ and 0.25 mg/mL.

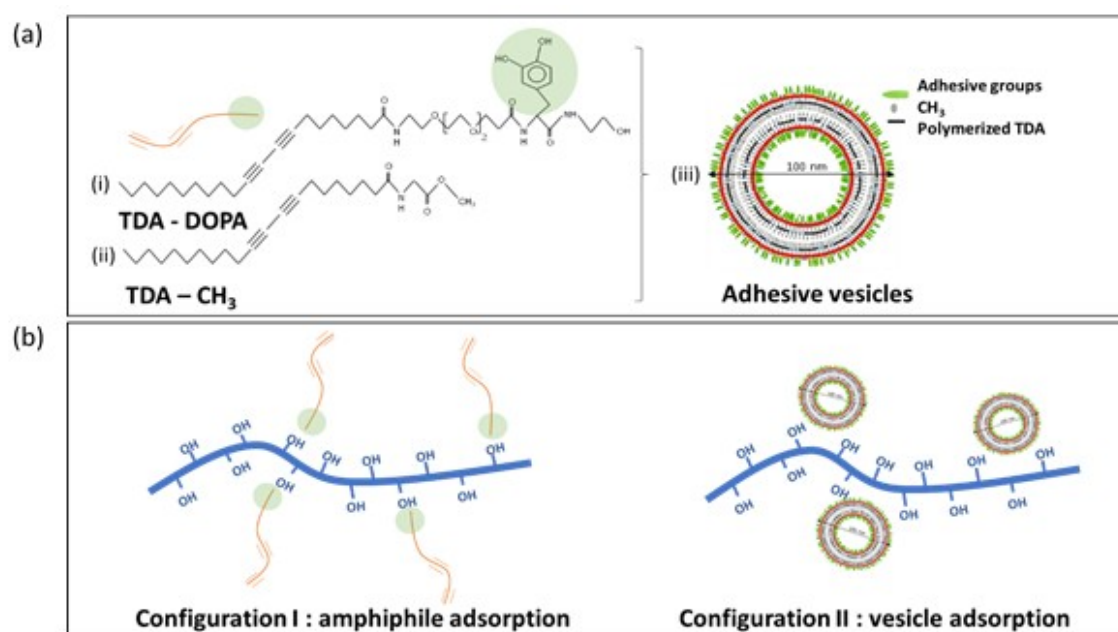


Figure 1. Synthesis of adhesive and sensitive interfaces at cellulose fibers, (a) chemical structure of adhesive vesicles with self-organization of synthesized amphiphiles, (b) surface modification of cellulose fibers with single amphiphiles or vesicles.

2.2. Cellulose Fiber Modification

The bleached softwood kraft pulp fibers were obtained from Sappi (Lanaken, Belgium) and modified into two configurations (Figure 1b), including (i) the adsorption of single adhesive amphiphiles, and (ii) the adsorption of vesicular structures with adhesive groups.

The cellulose fibers in configuration I were made by soaking the single cellulose fibers for a time of 1 hour an aqueous solution of individual TDA-DOPA adhesive amphiphiles (i.e., structure (i) in Figure 1a before the amphiphiles were organized into vesicular structures), resulting in the spontaneous adsorption of the amphiphiles at the cellulose surface. The individual cellulose fibers were soaked in the aqueous solutions with different concentration of TDA-DOPA adhesive amphiphiles similar to the mentioned vesicle concentrations, followed by drawing the modified fibers from the solution and drying them under ambient conditions for one week. The application of different concentrations of the amphiphile solutions consequently resulted in a various degree of surface modification of the cellulose fibers through adsorption of the TDA-DOPA amphiphiles.

The cellulose fibers in configuration II were created by soaking the cellulose fibers for 1 h in the prepared aqueous solutions vesicular with different concentrations of vesicles (i.e., structure (iii) in Figure 1a after the TDA-DOPA and TDA-CH₃ amphiphiles were combined into vesicles with different molar ratio of both amphiphiles. The aqueous solutions contained different concentrations of the vesicles, resulting in a different degree of vesicle deposits at the fiber surface. The modified fibers were dried under ambient conditions for one week.

2.3. Composite Formulation

In order to evaluate the effect of surface modification of the cellulose fibers on the interfacial strength in a polymer composite, the fibers were embedded into a film with PMMA polymer matrix by means of solution casting from toluene. The samples were prepared for subsequent single-fiber-

pull-out tests (SFPT) by casting the films with embedded fibers in a designed casting mould (Figure 2a).

The selected single cellulose fibers were organized in between a stretching device with two supporting clamps to have them straight and parallel oriented. After casting the PMMA films into the mould, the films formed after evaporation of the solvent and with a polymer concentration of 20 % (w/v), the composite films with a thickness of 1 mm were formed. The samples were subsequently cut along the indicated paths, having close control on the embedment depth of the fiber.

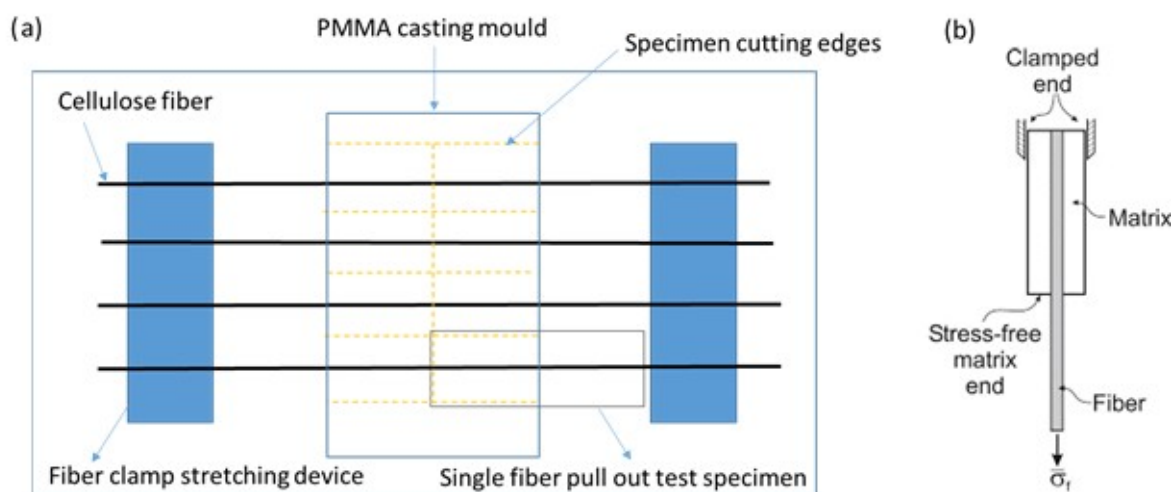


Figure 2. Formulation method of polymer composites with embedded fibers for the creation of test specimen, (a) organization of cellulose fibers and casting mould for PMMA films with embedded fibers and making test pieces, (b) single-fiber pull out tests (SFPT) in universal tensile tester.

2.4. Analytical Testing Methods

The failure strength at the interface was determined during a single-fiber pull out test (SFPT), using a universal tensile tester of Instron (Norwood, MA, USA) while attaching the embedded fiber in the upper clamp and the free end of the fiber in the lower clamp (Figure 2b). The clamps were moved with a velocity of 0.5 mm/min until fracture of the fiber at the interface from the matrix. The embedding length L was chosen after preliminary testing of single cellulose fibers, in order to not exceed the intrinsic tensile strength of the fiber, but rather inducing failure at the fiber/matrix interface. The maximum strength was determined from the maximum force at break as indicated from the force-displacement curves.

The wettability of the fibers was determined from contact angle measurements with sessile water drops on a GBX equipment (Bourg-de-Peage, France). A droplet of 0.5 μL was deposited on the cellulose fibers and the shape was fitted with an elliptical geometry to determine the average contact angle.

The optical and fluorescence microscopy on single fiber surfaces after the pull-out test was done on a BX51 microscope (Olympus, Düsseldorf, Germany), representing the fluorescent images as black-white pictures.

3. Results and Discussion

3.1. Cellulose Fiber Surface Properties

The surface properties of the cellulose fibers modified according to the configuration I, or configuration II, were first analysed by water contact angles, in order to illustrate the variations in hydrophilic properties of the native cellulose fibers. The results for water contact angles were repeated over five measurements per fiber sample, resulting in a statistical variation of $\pm 2^\circ$ on the reported values. Therefore, significant trends can be noticed in water contact angles depending on

the configuration or concentration of surface modification (Figures 3 and 4). Where the initial cellulose fibers are hydrophilic with a characteristic water contact angle of 60° , the surface modified fibers show significantly higher water contact angles.

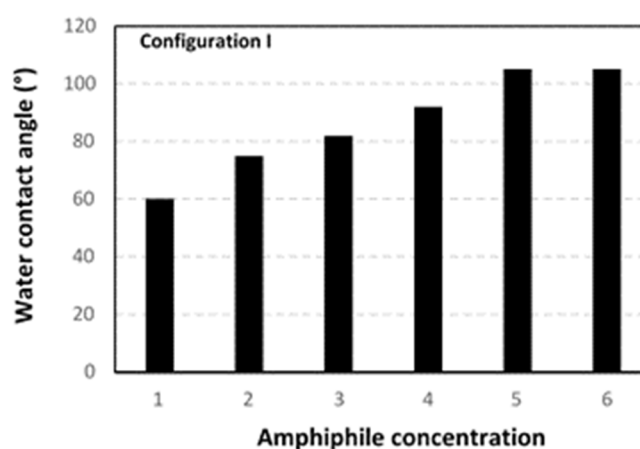


Figure 3. Water contact angle measurements representing hydrophobicity of surface-modified cellulose fibers, according to configuration I, for different concentrations (mg/ml) $c = 0.00$ (1), 0.015 (2), 0.03 (3), 0.06 (4), 0.125 (5), 0.25 (6).

For configuration I (Figure 3), contact angles increase up to a maximum of 105° at a concentration of 0.125 mg/mL. The high water contact angles prove a successful surface modification with adsorption of the TDA-DOPA amphiphiles at the cellulose surface. Moreover, the transition from hydrophilic into hydrophobic surface properties of the cellulose fibers confirm the assumption for self-assembly of the amphiphiles at the cellulose surface. The amphiphiles are characterized by presence of a hydrophobic tail (TDA) and a hydrophilic head-group (DOPA), which allows for the spontaneous self-assembly of the amphiphiles at the cellulose fiber surface. The hydrophilic TDA-part of the amphiphiles likely interacts with the hydroxyl groups at the cellulose surface and is consequently oriented towards the cellulose surface, while the hydrophobic DOPA-part of the amphiphiles is likely opposite oriented towards the outer side of the modified fibers. The interactions between the DOPA catechol groups and the cellulose hydroxyl groups are preferentially established through hydrophilic surface interactions and attractive hydrogen bonding. The latter seems to be relatively strong and stable due to the abundance in hydroxyl groups both at the cellulose surface and the amphiphilic structures. The intrinsic hydrophobic (fatty-acid like) properties of the TDA tails are successfully reflected in a hydrophobic surface modification of the cellulose fiber. At highest concentrations, however, there seems to be an upper level for hydrophobic modification that can be related to the efficiency for surface modification by assembly of the amphiphiles at the cellulose surface. At the higher concentrations, surface confinement may hinder the access of additional catechol groups to the cellulose surface and/or counteracting hydrophobic interactions at the strongly modified cellulose fibers may hinder the further efficiency for surface modification. However, the increase in contact angle from 60 to 105° by the presentation of fatty-acid like chemical structures at the outer surface side represents a significant improvement in hydrophobicity.

For configuration II (Figure 4), the variation in contact angle strongly depends on the concentration of TDA-DOPA amphiphiles, with a maximum up to 118° for the vesicles with 20 mol-% TDA-DOPA and concentration $c = 0.125$ mg/mL. Depending on the vesicle composition, indeed the absence of DOPA groups and/or low concentrations of DOPA groups obviously did not result in favourable adsorption of the vesicles to the cellulose structure due to lack of sufficient interaction between the catechol groups in the vesicles and the hydroxyl groups at the cellulose surface. The surface of the cellulose fibers was consequently hardly modified with vesicles containing 100 mol-% TDA-CH₃ amphiphiles, while there is noticed a progressive increase in contact angles and number of deposits for vesicles with 10 and 20 mol-% TDA-DOPA amphiphiles. For the vesicles with 35, 50 and

100 mol.-% TDA-DOPA amphiphiles, there were noticed sufficient deposits at the fiber surface; however, the hydrophilic properties of the DOPA-groups become more dominating above the hydrophobic properties of the CH₃ groups in the number of amphiphiles. Considering the variation in vesicle concentration, a maximum in water contact angles is noticeable at $c = 0.125$ mg/mL, which is likely a result in combination with the variations in nanoscale surface roughness effects. The deposition of multilayer nanoparticle layers at high concentrations, rather than single nanoparticle deposits at lower concentrations, may result in a decrease in particle interaction with the cellulose surface and smoothening of the nanoscale roughness caused by single nanoparticle deposits. As a result, an optimum for highest hydrophobicity of modified cellulose fibers is observed under specific conditions of vesicle composition and concentration.

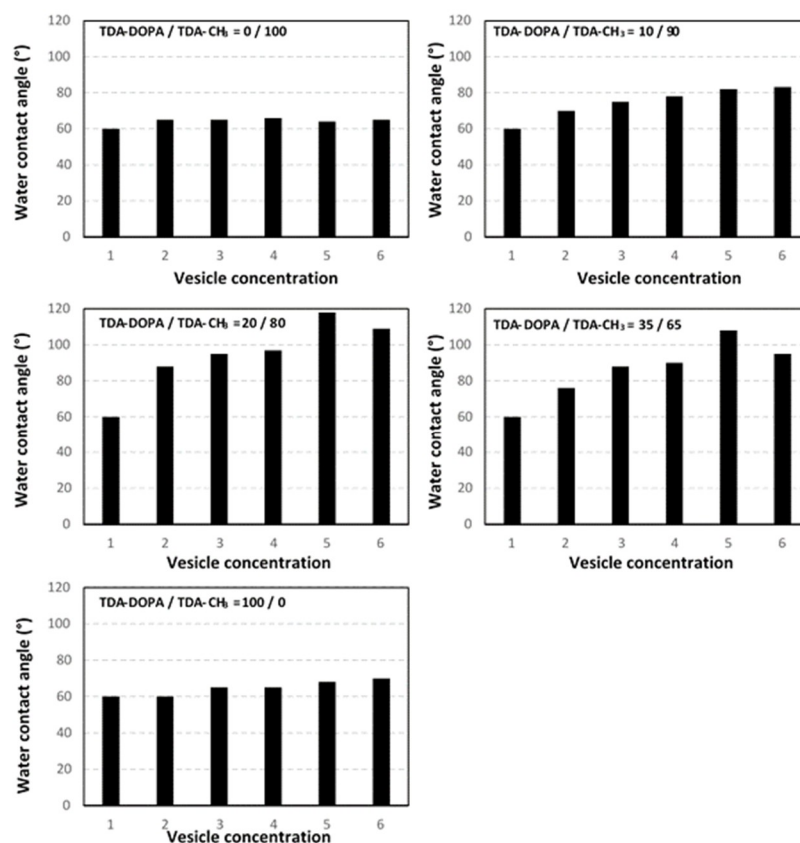


Figure 4. Water contact angle measurements representing hydrophobicity of surface-modified cellulose fibers, according to configuration II including different vesicle compositions indicated in the figures, for different concentrations (mg/mL) $c = 0.00$ (1), 0.015 (2), 0.03 (3), 0.06 (4), 0.125 (5), 0.25 (6).

3.2. Single Fiber Pull-Out Tests

The average results from SFPT tests are reported as the maximum pull-out force, representing the loosening of the fiber from the matrix as a measure for the interfacial strength (Figure 5). The values are represented as pull-out forces and are comparable for the similar geometries of the used fibers with a statistical variation of ± 0.10 N.

The improvement of interfacial strength occurs at an optimum composition of the vesicles with 20 mol.-% TDA-DOPA amphiphiles at corresponding concentration $c = 0.125$ mg/mL, comparable to the observations for surface hydrophobicity of the fibers. Besides the improvement in the adhesive interaction between fibers and matrix observed in presence of DOPA for the configuration II samples, also the hydrophobic interactions between the fiber and the PMMA matrix may improve the interface strength for the configuration I samples. However, the latter may become better visualized in a better dispersion of the cellulose fibers within a hydrophobic polymer matrix. In this research, only a better wettability between the fibers and the PMMA matrix was measured. An evaluation of the surface

morphology of cellulose fibers with 20 mol-% TDA-DOPA amphiphiles after shear failure at the interface shows local color transition from blue into red associated with fluorescence corresponding to the locations of maximum shear stress at the fiber surface (Figure 6).

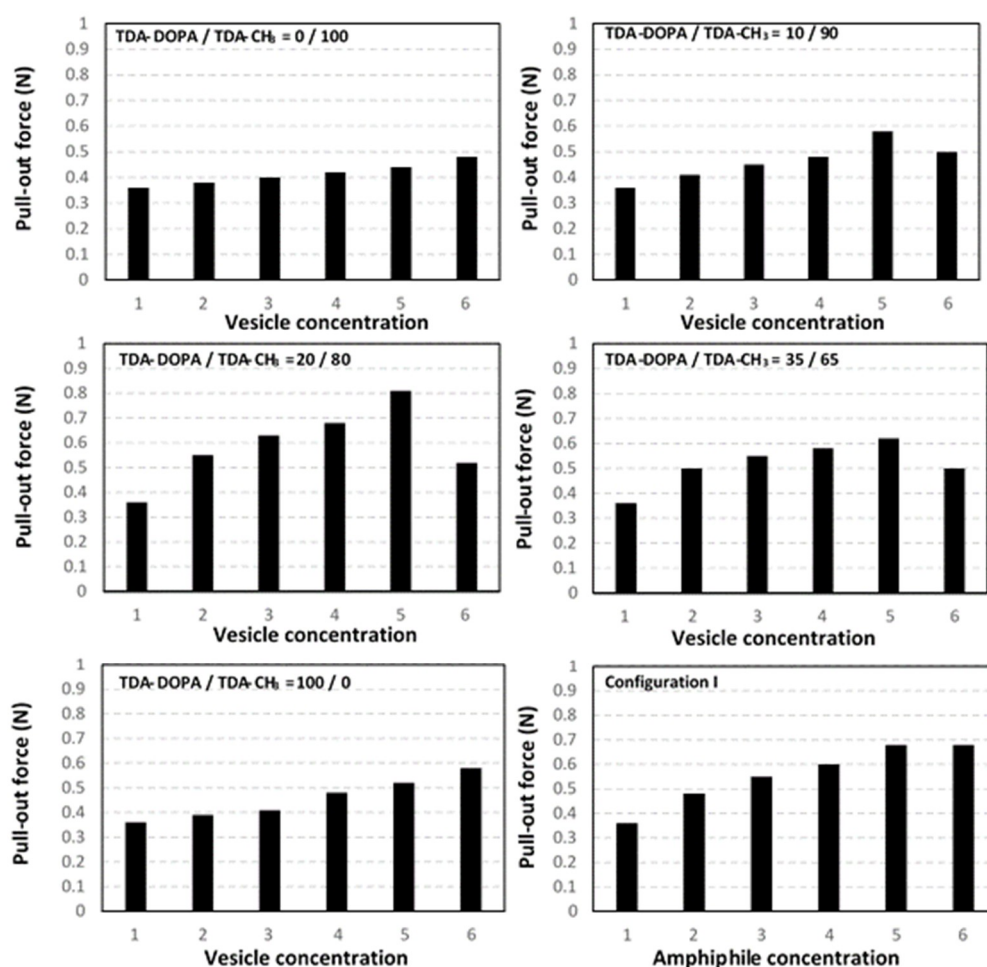


Figure 5. Forces from SFPT for cellulose fibers, according to configuration II including different vesicle compositions, or configuration I for different concentrations (mg/mL) $c = 0.00$ (1), 0.015 (2), 0.03 (3), 0.06 (4), 0.125 (5), 0.25 (6).

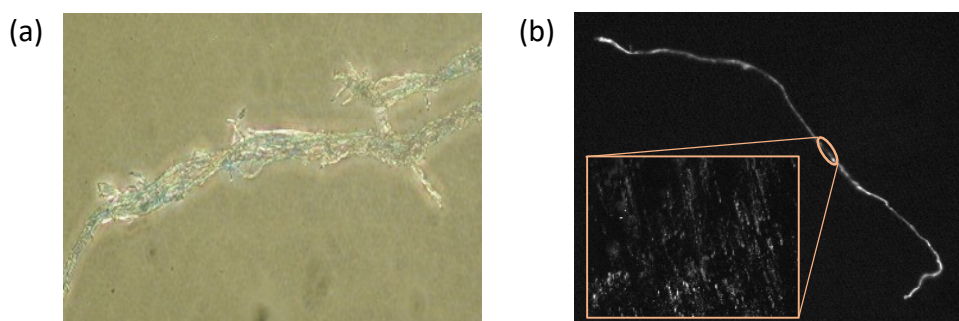


Figure 6. Local coloration and fluorescence at the fiber surface after SFPT evaluation, (a) optical coloration of fiber with red and blue zones, (b) fluorescent response corresponding to local zones of intense shear stress over full fiber and detail of fiber surface (inset).

4. Conclusions

The cellulose fibers can be modified through the adsorption of vesicles containing amphiphiles with an adhesive head-group. The catechol groups favourably interact with the cellulose surface and provide improved interface adhesion at given optimum concentrations. The intrinsic fluorescent response of the polymerized adhesive vesicles provides stress sensitivity response at the interface.

Acknowledgments: Funding for this research was provided by the Robert Bosch Foundation (Germany, Stuttgart) in framework of the Juniorprofessorship program on research into sustainable use of natural resources.

References

1. Lee, H.; Scherer, N.F.; Messersmith, P.B. Single-molecule mechanics of mussel adhesion. *Proc. Nat. Acad. Sci.* **2006**, *103*, 12999–13003.
2. Saiz-Poseu, J. The chemistry behind catechol-based adhesion. *Angew. Chem. Int. Ed.* **2019**, *58*, 696–714.
3. Zhang, L.; Li, Z.; Pan, Y.T.; Yanez, A.P.; Hu, S.; Zhang, X.Q.; Wang, R.; Wang, D.Y. Polydopamine induced natural fiber surface functionalization: a way towards flame retardancy of flax/poly(lactic acid) biocomposites. *Composites B* **2018**, *154*, 56–63.
4. Warta, R.; Sixl, H. Optical absorption and fluorescence spectroscopy of stable diacetylene oligomer molecules. *J. Chem. Phys.* **1988**, *88*, 95.
5. Samyn, P.; R uhe, J.; Biesalski, M. Polymerizable biomimetic vesicles with controlled local presentation of adhesive functional dopa groups. *Langmuir* **2010**, *26*, 8573–8581.

Publisher’s Note: MDPI stays neutral with regard to jurisdictional claims in published maps and institutional affiliations.



© 2020 by the authors. Submitted for possible open access publication under the terms and conditions of the Creative Commons Attribution (CC BY) license (<http://creativecommons.org/licenses/by/4.0/>).