

# A FIRST INSIGHT INTO THE OCCURENCE OF COCKROACHES IN THE URBAN CITY OF THESSALONIKI (GREECE) - IDENTIFYING HOT SPOTS



I. Dimitriadou<sup>1\*</sup>, G. Memtsas<sup>2</sup>, F. Xystrakis<sup>3</sup>, D.Kavvadas<sup>1</sup>,  
T. Papamitsou<sup>1</sup>, D.N. Avtzis<sup>3</sup>

<sup>1</sup>School of Medicine, Faculty of Health Sciences, Aristotle University of Thessaloniki, 54124, Thessaloniki

<sup>2</sup>Department of Ecology, School of Biology, Aristotle University of Thessaloniki, 54124, Thessaloniki

<sup>3</sup>Forest Research Institute, Hellenic Agricultural Organization Demeter, 57006, Vassilika-Thessaloniki

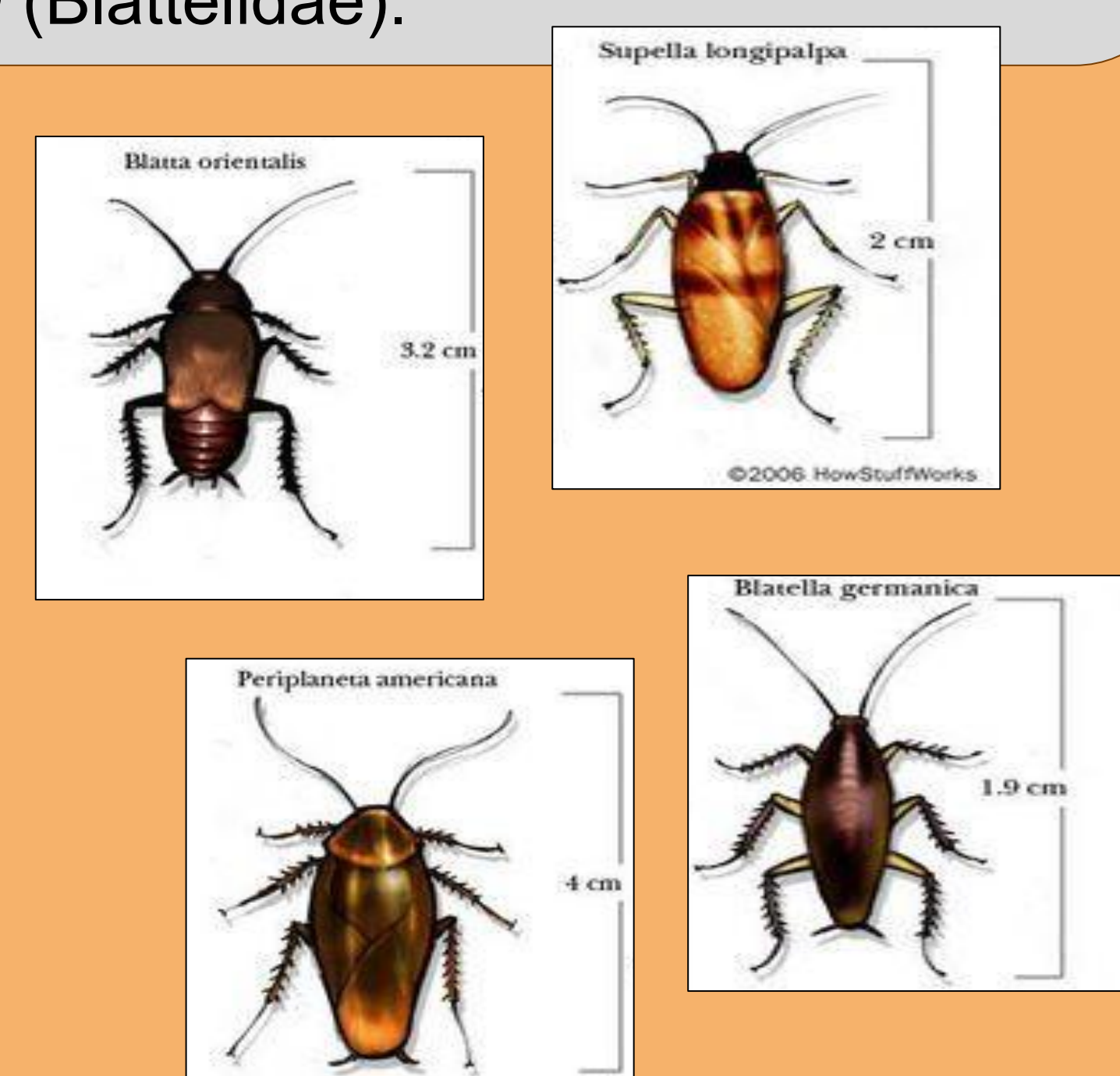
\*email: iodimi93@gmail.com

## The concept

- Spatial mapping of locations where disinfestations against cockroaches took place in the city of Thessaloniki (Greece) for two consecutive years (2019 & 2020).
- Identification of hot spots in the urban area of Thessaloniki.

## The species

- Blattodea are very abundant in the urban landscape.
- The most abundant species in Greece are *Blatta orientalis* and *Periplaneta americana* (Blattidae), *Blattella germanica* and *Supella longipalpa* (Blattelidae).



## The impact

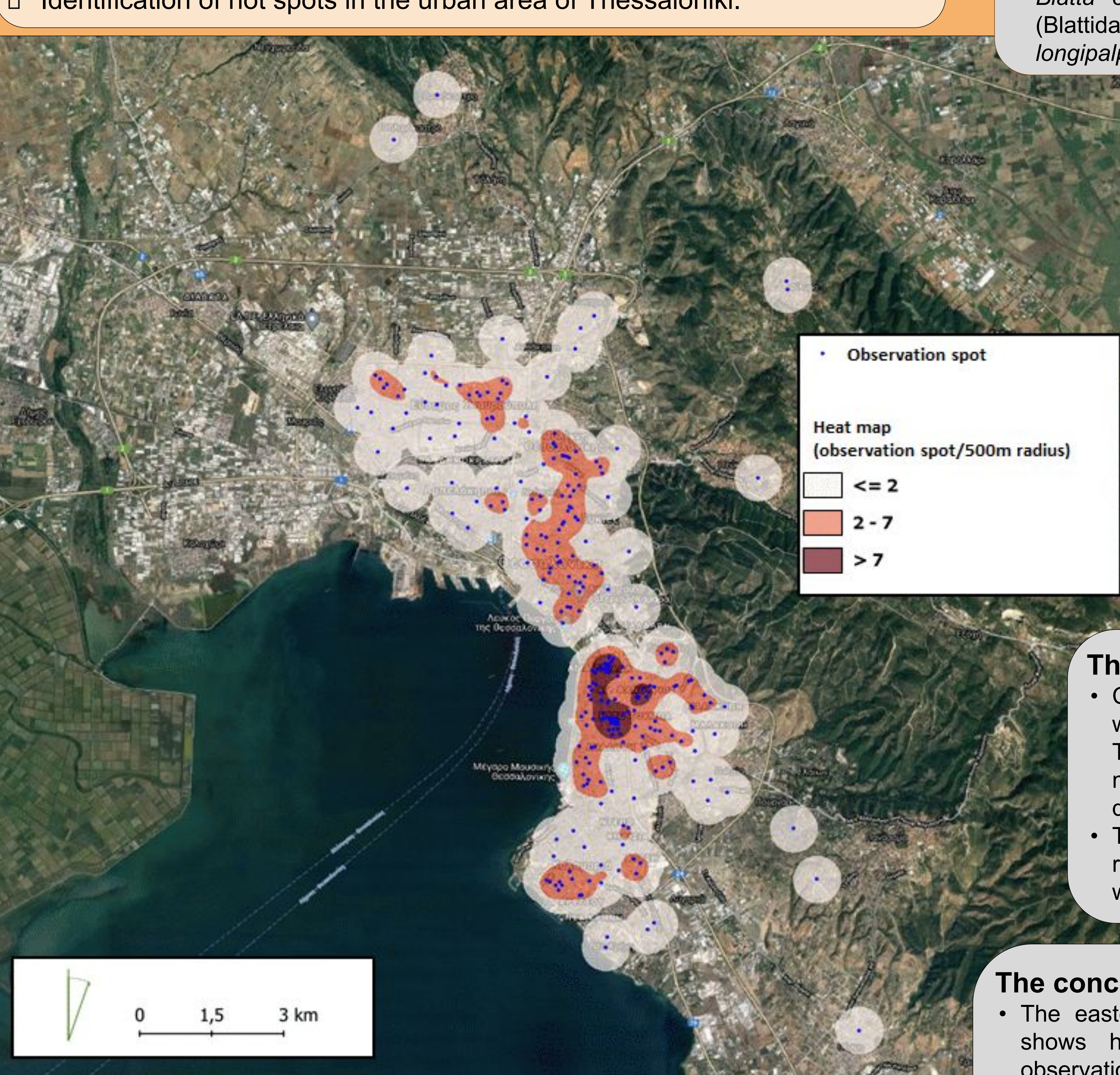
- ideal vectors of pathogens.
- Carriers of indoor allergens that can lead to IgE sensitization, the development of allergic rhinitis and asthma.

## The method

- Collection and record of 283 locations where two pest control companies of Thessaloniki performed chemical management against cockroaches during 2019 & 2020.
- To draw heat-density map, we used a radius of 500 m at each location that was then ranked into three classes.

## The conclusions

- The eastern part of the city of Thessaloniki shows higher abundance of cockroaches' observation spots something that can be associated with the occurrence of great health facilities.
- Additionally, the dense-inhabited center of Thessaloniki exhibits also numerous infestation points, something that can well be further burdened by the occurrence of old houses and blocks.



## The future work to be done

- Deployment of traps in various places of Thessaloniki, in order not only to identify the hotspot, but most importantly to accurately map the distribution and occurrence of each species.
- Screening the trapped individuals for the pathogens they vector.
- Supplement the dataset with additional records from other pest control companies, so that the spatial and temporal pattern could be further explored.

## References

1. Etim, S.E.; Okon, O.E.; Akpan, P.A.; Ukpong, G.I.; Oky, E.E. Prevalence of cockroaches (*Periplaneta americana*) in households in Calabar: Public health implications. *Journal of Public Health and Epidemiology*, **2013**,5,149-152.
2. Lauprasert, P.; Sitthicharoenchai, D.; Thirakhupt, K.; Pradatsudarasar, A. Food Preference and Feeding Behavior of the German Cockroach, *Blattella germanica* (Linnaeus). *J. Sci. Res. Chula. Univ*, **2006**,31,121-126.
3. Stern, J.; Pier, J.; Litonjua, A. Asthma epidemiology and risk factors. *Seminars in Immunology*, **2020**,42,5-15.

## ACKNOWLEDGEMENTS

