

# Material Damping Analysis of Triangular Cantilever Beam for Electromagnetic Vibration Energy Harvesting Applications <sup>†</sup>

ChungKet Thein <sup>1,\*</sup>, Faruq Muhammad Foong <sup>2</sup>

<sup>1</sup> School of Aerospace, University of Nottingham Ningbo China, Ningbo 315100, China; chungket.thein@nottingham.edu.cn

<sup>2</sup> Aeronautics Laboratory, School of Mechanical Engineering, Faculty of Engineering, Universiti Teknologi Malaysia, Skudai 81310, UTM Johor, Malaysia; faruqfoong@utm.my

\* Correspondence: chungket.thein@nottingham.edu.cn

<sup>†</sup> Presented at the 8th International Electronic Conference on Sensors and Applications, 1–15 November 2021; Available online: <https://ecsa-8.sciforum.net>.

**Abstract:** Triangular cantilever beam are often desired in piezoelectric vibration energy harvesting applications as they result in a better performance due to a higher and more uniform stress. However, the application of this cantilever geometry has not yet been explored for other transduction methods. In this study, the application of a triangular cantilever beam for a cantilevered electromagnetic vibration energy harvester was examined by analyzing its material damping and comparing it to a regular rectangular beam. The material damping of the harvester was predicted through finite element analysis using the critically damped stress method. Under the same beam volume or beam length, the triangular cantilever beam exhibited an approximately 7.1% lower material damping when compared to a rectangular cantilever beam. Further analysis shows that the triangular beam can also deliver a 21.7% higher power output than the rectangular beam.

**Keywords:** electromagnetic vibration energy harvesting; triangular cantilever beam; material damping; finite element analysis; critically damped stress method

**Citation:** Thein, C.; Foong, F.M. Material Damping Analysis of Triangular Cantilever Beam for Electromagnetic Vibration Energy Harvesting Applications. *2021*, *3*, x. <https://doi.org/10.3390/xxxxx>

Academic Editor(s): Chung Ket Thein

Published: 1 November 2021

**Publisher's Note:** MDPI stays neutral with regard to jurisdictional claims in published maps and institutional affiliations.



**Copyright:** © 2021 by the authors. Submitted for possible open access publication under the terms and conditions of the Creative Commons Attribution (CC BY) license (<http://creativecommons.org/licenses/by/4.0/>).

## 1. Introduction

Vibration energy harvesting (VEH) have emerged as one of the most promising sources of sustainable energy to power low-powered electronics [1] and structural health monitoring. However, research that involves powering larger devices have also been explored [2]. Among the different approaches to convert mechanical vibrations into electricity, the two most common applied methods are piezoelectric transducers and electromagnetic induction. While piezoelectric VEH generally dominates in the micro-volume scale, electromagnetic VEH tends to perform better at larger volumes [3,4].

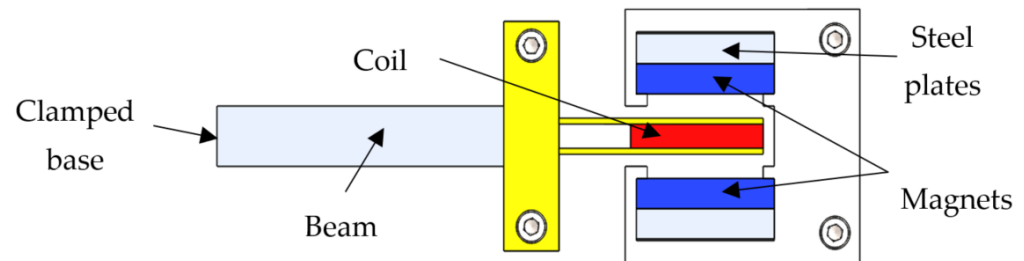
Over the past decade, many researchers have proposed different methods to optimize the performance of a VEH device. One of the most well-known conclusions is that using a triangular cantilever beam would increase the performance of a piezoelectric VEH [5–7]. This is because the power output of a piezoelectric VEH mainly relies on the stress induced in the piezoelectric materials. A deformed triangular cantilever beam exhibits a larger and more uniform stress along the length of the beam as compared to a regular rectangular beam [8]. Nevertheless, the benefits of a triangular cantilever beam for an electromagnetic VEH have not yet been explored.

In this study, the use of a triangular cantilever beam for electromagnetic VEH applications was evaluated by analyzing its material damping as compared to a rectangular cantilever beam. Both beams were modelled in a finite element software and the material damping of both beams for different beam dimensions were determined using the critically damped stress method. The amplitude responses of both beams were then evaluated

for a certain coil component under a set of constraints and the benefits of the triangular beam for electromagnetic VEH applications were highlighted.

## 2. Power and Damping of a Cantilevered Electromagnetic VEH

Figure 1 illustrates an example of a typical cantilevered electromagnetic VEH device. The base of the cantilever beam is clamped to a vibrating structure whereas a coil component is clamped to the free end of the beam and placed within a magnetic field generated by several permanent magnets. Based on Faraday's law of electromagnetism, voltage is induced in the coil when the coil vibrates in the magnetic field. This voltage is maximized at resonance when the frequency of the input vibration is equal to the natural frequency of the harvester.



**Figure 1.** Design of a typical cantilevered electromagnetic vibration energy harvester.

The damping of an electromagnetic VEH device is generally the sum of its structural damping and its electromagnetic damping components. Under the optimum load resistance condition, the electromagnetic damping becomes approximately equal to the structural damping [9]. Assuming a harmonic input vibration and a constant magnetic field, the maximum average power output induced by the harvester at the first vibration mode resonance can be written as [8].

$$P = \frac{mG^4}{16\zeta_s\omega_1'} \quad (1)$$

where  $P$  is the output power,  $m$  is the effective mass of the harvester,  $G$  is the acceleration of the input vibration,  $\omega_1'$  is the harvester's fundamental natural frequency and  $\zeta_s$  is the first mode structural damping. Equation (1) shows that the power output is dependent on several parameters. However, if the same coil and magnet components were used and the input vibration and natural frequency of the harvester were maintained, the structural damping becomes the main contributor towards its power output.

The structural damping of a harvester can be further broken down into several discrete damping components which includes material damping, thermoelastic damping, viscous air damping and support damping [10]. The sum of all these damping components makes up the total structural damping of the harvester. However, for macro-sized structures, only the material damping and the thermoelastic damping plays a significant contribution to the overall structural damping [11]. Nevertheless, for some material such as stainless-steel, the thermoelastic damping is approximately 25 times lower than the material damping in macro-sized structures. Hence, Equation (1) can be approximated as

$$P \approx \frac{mG^4}{16\zeta_m\omega_1'} \quad (2)$$

where  $\zeta_m$  is the material damping of the harvester. For a cantilevered harvester, the material damping originates from the molecular interactions inside the material of the cantilever beam. However, very few methods are available to predict this damping.

Recently, a new method to evaluate the material damping of cantilever beams was proposed by Foong et al. [11]. This method relates the material damping ratio of the cantilever beams to twice its maximum resonant stress under the critically damped condition

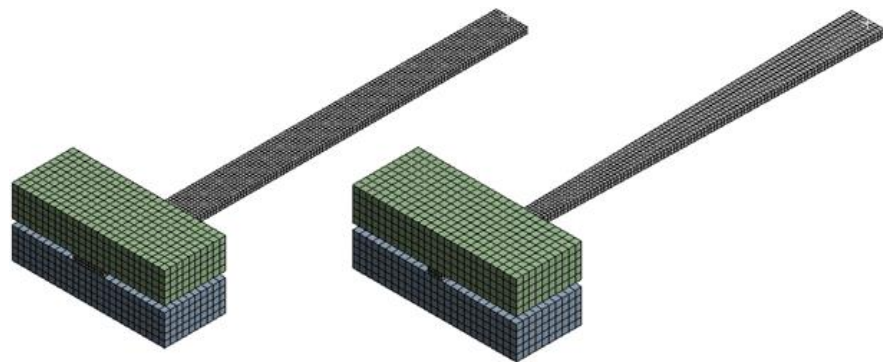
when the damping ratio is equal to one, otherwise defined as the critically damped stress. Hence, it was dubbed as the critically damped stress method. The main advantage of this method is that only two iterations are required to determine the material damping of cantilever beams, making it very practical for finite element applications. For a stainless-steel material, the material damping ratio can be related to the critically damped stress,  $\sigma_c$ , by the following expression [12].

$$\zeta_m = 2.109 \times 10^{-8} (\sigma_c)^{0.8447} + 1.662 \times 10^{-3}, \quad (3)$$

The equation has a mean error of approximately 10.0% and can be used to predict the material damping of stainless-steel cantilever beams with sufficient accuracy. Additionally, it has been shown in [12] that the same equation is also capable of predicting other cantilevered structures apart from a uniform rectangular beam

### 3. Finite Element Modelling and Methodology

In this study, the performance of stainless-steel triangular cantilever beam for electromagnetic VEH applications was analyzed through finite element analysis (FEA) by studying their material damping. The triangular beam was then compared to the results from a regular uniform rectangular cantilever beam. The reason this method was chosen was because it is analytically difficult to accurately model the vibration response of a triangular cantilever beam. Both beams were modelled in ANSYS software using tetrahedral elements and meshed using a size of 0.5 mm. The properties of a stainless-steel material were assigned and two identical proof masses weighing 19.0 g each were added at the free end of each beam as seen in Figure 2. Initially, the thickness and the width of the beam were fixed at 1.0 mm and 5.0 mm and the length of the beams were adjusted to acquire the same fundamental natural frequency of  $\omega_1 = 32.34$  Hz. This would also inevitably change the volume of the cantilever beam.



**Figure 2.** Finite element model of a rectangular (**left**) and a triangular (**right**) cantilever beam with added proof mass.

A fixed constraint was applied to the base of the beam to simulate a clamped condition and a constant base acceleration of  $G = 1.96 \text{ ms}^{-2}$  was used in the simulation. The material damping for each beam was then obtained using the flowchart described in Figure 3.

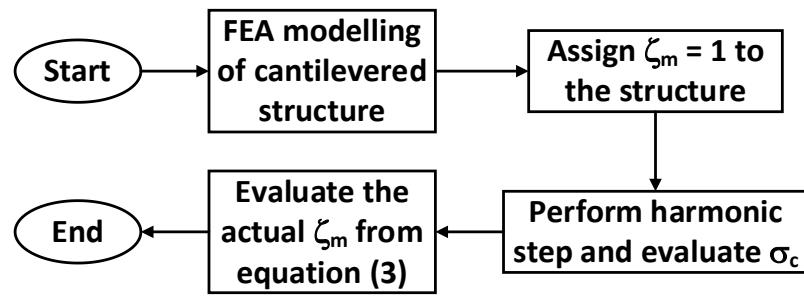


Figure 3. Step to obtain the material damping of cantilevered structure through FEA.

The analysis was then repeated several times by changing the width of the both beams in increments of 1.0 mm until a width of 10.0 mm. For each change in width, the length of the beams was adjusted to meet the same natural frequency and the material damping was recorded. The same base acceleration input was used in all analysis.

#### 4. Results and Discussion

Figure 4 shows the variation in material damping against the beam volume and the beam length for the triangular and the rectangular cantilever beam.

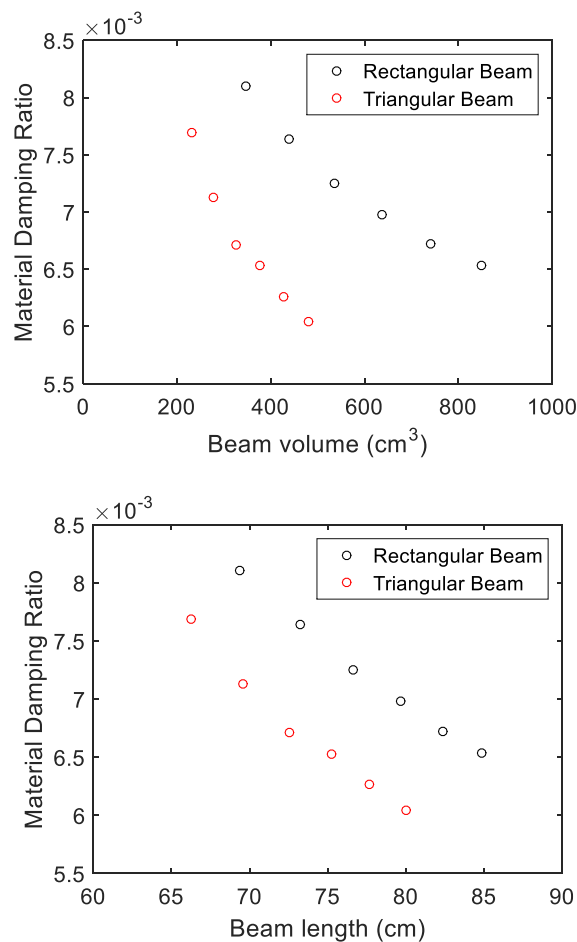
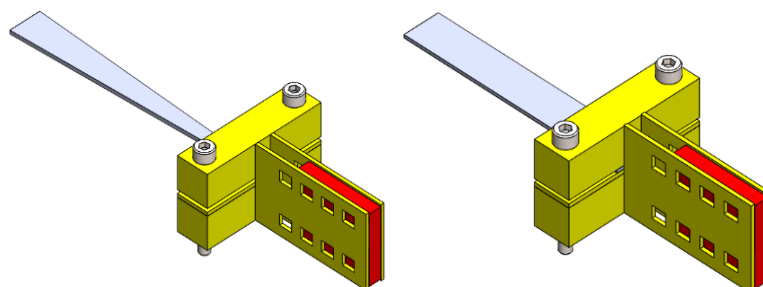


Figure 4. Variation material damping ratio with cantilever beam volume (left) and length (right) for a triangular and a rectangular cantilever beam.

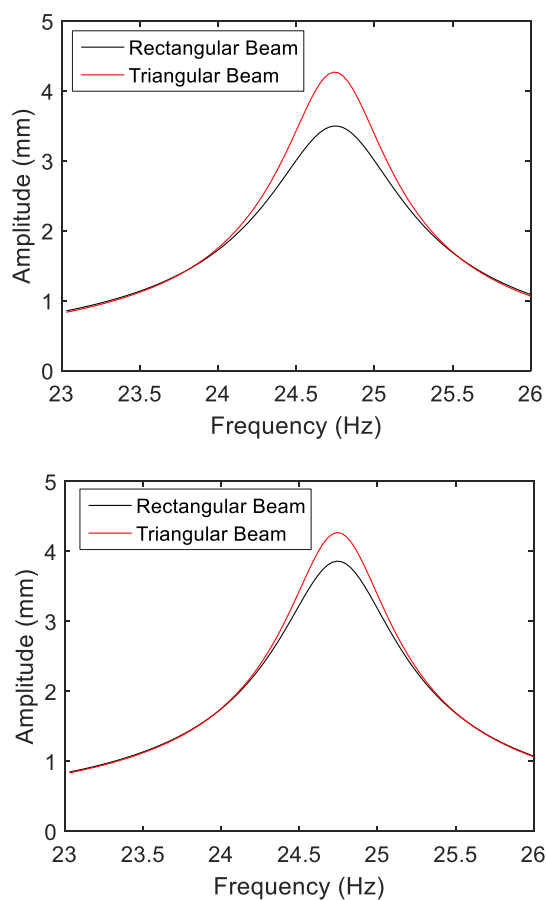
Figure 4 shows that for both beams, the material damping generally decreases with beam volume and beam length due to the reduction in stress at larger volumes. However, under the same volume or length, the triangular cantilever beam exhibits a lower material

damping than the rectangular beam, which according to Equation (2) would result in a larger power output. On average, the triangular beam recorded a 7.1% lower damping than the rectangular beam. The analysis was then repeated for the following design in Figure 5 where a coil component which was modelled based on the real item was attached to the beam instead of the proof mass. This component weighs approximately 21.13 g.



**Figure 5.** A triangular and a rectangular cantilever beam with an attached coil component

This analysis was conducted so that the results here can be verified experimentally in future works. This time, two scenarios were considered. In the first scenario, the volume of the beam was constrained to 480 cm<sup>3</sup> whereas in the second scenario, the length of the beam was constrained to 80.0 mm. In both scenarios, the natural frequencies of both beams were tuned to 24.75 Hz and the same base acceleration of  $G = 1.96 \text{ ms}^{-2}$  was applied. The condition of optimum load resistance (electrical damping = structural damping  $\approx$  material damping) was assumed in the analysis. The amplitude responses of the two beams under the two mentioned scenarios are compared in Figure 7.



**Figure 6.** Comparison between the amplitude response of the triangular and the rectangular beam for the first scenario (left) and the second scenario (right).

The maximum average power output at resonance for each beam in both scenarios was then estimated using the following equation

$$P = \frac{mG\omega_1 z_{max}}{2}, \quad (4)$$

where  $z_{max}$  is the amplitude of the harvester at the fundamental resonance mode. Note that Equation (4) is simply Equation (1) expressed in terms of the resonance amplitude. For the first scenario, a maximum average power output of 13.8 mW was obtained for the triangular beam and an output of 11.3 mW was obtained for the rectangular beam, implying a 22.1% higher power output for the triangular beam. For the second scenario, the triangular beam and the rectangular beam recorded a maximum power output of 13.8 mW and 12.4 mW respectively, showing an 11.3% increase for the triangular beam. Therefore, this proves that a triangular cantilever beam is also beneficial for electromagnetic VEH applications.

## 5. Conclusions

In this study, the application of a triangular cantilever beam in electromagnetic VEH applications was analyzed by comparing the structures material damping to that of a uniform rectangular cantilever beam. It was found that under the optimum load resistance condition, the maximum average power output of an electromagnetic harvester is mainly dependent on its material damping. A triangular and a rectangular cantilever beam was then modelled in a finite element software and their corresponding material damping was predicted using the critically damped stress method. Upon comparison, the triangular beam displayed an average of 7.1% lower material damping than the rectangular beam. Further analysis demonstrated that the power output of the triangular beam was 21.7% higher than the rectangular beam for the case of a constrained beam volume, and 11.3% higher if the beam length was fixed instead. Hence, this highlights the benefits of a triangular cantilever beam for electromagnetic VEH. An experiment will be conducted as part of future works to validate the analysis conducted in this work. In addition, the work presented here is definitely beneficial to the self-powered sensor in the future especially predicting the power through different design.

**Institutional Review Board Statement:**

**Informed Consent Statement:**

**Data Availability Statement:**

## References

1. Siang, J.; Lim, M.H.; Leong, M. Review of vibration-based energy harvesting technology: Mechanism and architectural approach. *Int. J. Energy Res.* **2018**, *42*, 10.1002/er.3986.
2. Wang, J.J.; Penamalli, G.P.; Zuo, L. Electromagnetic Energy Harvesting from Train Induced Railway Track Vibrations. In Proceedings of the 8th IEEE/ASME International Conference on Mechatronic and Embedded Systems and Applications, Suzhuo, China, 8–10 July 2012; MESA 2012.
3. Kim, S.G.; Priya, S.; Kanno, I. Piezoelectric MEMS for energy harvesting. *MRS Bull.* **2012**, *37*, 1039–1050.
4. Foong, F.M.; Thein, C.K.; Yurchenko, D. A novel high-power density, low-frequency electromagnetic vibration energy harvester based on anti-phase motion. *Energy Convers. Manag.* **2021**, *238*, 114175.
5. Thein, C.K.; Liu, J.S. Numerical modeling of shape and topology optimisation of a piezoelectric cantilever beam in an energy-harvesting sensor. *Eng. Comput.* **2017**, *33*, 137–148.
6. Lei, J.; Shiqiao, G.; Xiaoya, Z.; Guangyi, Z. The effect of different shapes of cantilever beam in piezoelectric energy harvesters on their electrical output. *Microsyst. Technol.* **2017**, *23*, 4805–4814.
7. Asan, G.A.; Muthalif, N.H.; Diyana, N. Optimal piezoelectric beam shape for single and broadband vibration energy harvesting: Modeling, simulation and experimental results. *Mech. Syst. Signal Process.* **2015**, *54–55*, 417–426.
8. Li, H.; Tian, C.; Deng, Z.D. Energy harvesting from low frequency applications using piezoelectric materials. *Appl. Phys. Rev.* **2014**, *1*, 041301.
9. Beeby, S.P.; Torah, R.N.; Tudor, M.J.; Glynne-Jones, P.; O'Donnell, T.; Saha, C.R.; Roy, S. A micro-electromagnetic generator for vibration energy harvesting. *J. Micromech. Microeng.* **2007**, *17*, 1257–1265.

- 
10. Du Toit, N.E. Modeling and Design of a MEMS Piezoelectric Vibration Energy Harvester. Master's Thesis, Massachusetts Institute of Technology: Cambridge, MA, USA, 2015.
  11. Foong, F.M.; Thein, C.K.; Yurchenko, D. On mechanical damping of cantilever beam-based electromagnetic resonators. *Mech. Syst. Signal Process.* **2019**, *119*, 120–137.
  12. Foong, F.M.; Thein, C.K.; Yurchenko, D. Structural optimisation through material selections for multi-cantilevered vibration electromagnetic energy harvesters. *Mech. Syst. Signal Process.* **2022**, *162*, 108044.