

Proceeding Paper

Amino Acids Treatments Induce Adventitious Root Formation in Two Different Genotypes of *Campanula portenschlagiana* †

Tábata Bergonci * and Ivan Paponov *

Department of Food Science, Aarhus University, 8200 Aarhus, Denmark

* Correspondence: tabatab@alumni.usp.br (T.B.); ivpa@food.au.dk (I.P.)

† Presented at the 1st International Electronic Conference on Horticulturae, 16–30 April 2022; Available online: <https://iecho2022.sciforum.net/>.

Abstract: *Campanula portenschlagiana* is an ornamental plant vegetatively propagated from mother plants shoot explants. In this study, we worked with two different genotypes of *C. portenschlagiana*, Deep Blue Ocean and White Ocean. We found different root abilities between the two genotypes, where Deep Blue Ocean showed a higher percentage of rooted explants when compared with the White Ocean genotype. Plant hormone analyses showed that Deep Blue Ocean has a higher amount of endogenous auxins when compared with the White Ocean genotype. In the White Ocean genotype, L-Glutamate and L-tryptophan treatments increased the percentage of rooted explants by 80% and 40% compared with control, respectively. L-glutamate and L-tryptophan treatments increased root biomass of the Deep Blue Ocean genotype. Taken together, our results showed that the amino acids L-glutamate and L-tryptophan could be required in adventitious root formation in *C. portenschlagiana*. Further, the differences between genotypes can be partially explained by endogenous hormone concentration.

Keywords: plant propagation; glutamate; tryptophan; root growth; ornamental plants

Citation: Bergonci, T.; Paponov, I. Amino Acids Treatments Induce Adventitious Root Formation in Two Different Genotypes of *Campanula portenschlagiana*. *Biol. Life Sci. Forum* **2022**, *2*, x. <https://doi.org/10.3390/xxxxx>

Academic Editor(s):

Published: 16 April 2022

Publisher's Note: MDPI stays neutral with regard to jurisdictional claims in published maps and institutional affiliations.



Copyright: © 2022 by the authors. Submitted for possible open access publication under the terms and conditions of the Creative Commons Attribution (CC BY) license (<https://creativecommons.org/licenses/by/4.0/>).

1. Introduction

Campanula portenschlagiana is an ornamental plant originally from the Dalmatian Mountains in Croatia. Like many potted flowering plants, *C. portenschlagiana* is vegetatively propagated from mother plants shoot explants. In *C. portenschlagiana* explants, adventitious root (AR) formation success depends on the genetic background, where rooting ability can be classified in a range from easy-to-root to difficult-to-root genotypes.

Plant hormones play an important role in the control of AR formation, with auxin being known as the central player in the hormonal network that regulates the AR formation process [1]. Indole-3-acetic acid accumulates at the basal cut site and induces AR formation interacting with many endogenous factors and exogenous stimuli [2]. Although a large number of studies tried to understand AR formation, most of them were made in *Arabidopsis* and tomato, and little is known about AR formation in *C. portenschlagiana*.

Here, we selected two genotypes of *C. portenschlagiana* to investigate their ability in AR formation. We also analyzed the endogenous concentration of plant hormones at the basal cut site. Finally, we treated both genotypes with amino acids to evaluate their response to form AR through exogenous stimulation. Our results showed dissonant efficiency to form AR among genotypes, which can be somewhat explained by distinct endogenous hormone amounts at the basal cut site. Moreover, the AR formation in difficult-to-root genotype can be stimulated with exogenous amino acid treatments.

2. Methods

2.1. Experimental Setup

Shoot explants from both Deep Blue Ocean and White Ocean stock plants genotypes of *Campanula portenschlagiana* were placed in an aeroponic system, consisting of 3 closed irrigation systems, one for each treatment. For each cultivar, 20 cuttings per treatment per replication were used. The cuttings were cultivated in a nutrient solution which contained 1 mM CaSO₄, 1 mM K₂HPO₄, 1 mM KH₂PO₄, 2 mM MgSO₄, and micronutrients with the following concentrations: 30 µmol B, 15 µmol Fe, 10 µmol Mn, 5 µmol Zn, 0.75 µmol Cu, and 0.5 µmol Mo. 1 mM of L-glutamate or 1 mM of L-tryptophan were added in the nutrient solution. As a control, we used nutrient solution without any amino acids added. The plants were grown in a photoperiod of 16/8 h (day/night), at approximately 23/18 °C (day/night), relative humidity of 70–80%, and 150 µmol m⁻² s⁻¹ of light intensity.

2.2. Morphological and Physiological Analyses

After 21 days of treatments, cuttings from Deep Blue Ocean and White Ocean genotypes were evaluated for fresh and dry weight of the root, number of rooted cuttings, length of the root, and number of roots per cutting. The numbers of rooted cuttings were counted every day, from day 0 to day 21. For the dry weight measurement, fresh cuttings were dried at 65 °C in a constant flux oven for 48 h.

2.3. Plant Hormone Analyses

The 1-cm fragments at the basal cut site were collected and immediately frozen in liquid nitrogen. 20 mg of homogenized sample material were extracted with 80% methanol containing 1% acetic acid. The samples were placed in an ultrasound bath for 45 min. After extraction, samples were centrifugated at 1500 rpm for 10 min at 20 °C. The supernatant was transferred to another vial and the pellet was re-extracted with the same process. After the second extraction, the supernatant was combined with the first supernatant obtained. Samples were diluted 4 times and filtered through a syringe filter (0.22 µm).

The standard solutions for the calibration curve were prepared from the mixed stock solution containing indole-3-acetic acid, indole-3-butyric acid, abscisic acid, gibberellic acid 3, and trans-zeatin 6-purine, in the range of 0.095–400 ng/mL. The content of all hormones was detected by QTRAP 4500 LC/LC-MS platform. Analyst Software (version 1.6.1) was used for instrument control, data acquisition, and quantification. Three independent biological replicates were analyzed.

2.4. Statistical Analyses

The data are collected from three independent experiments and analysis of variance (ANOVA) was performed in R (version 3.3.1, R Core Development Team, 2017). Pairwise comparisons were performed by *t*-test. Multiple comparisons were performed by Tukey's honestly significant difference test after ANOVA.

3. Results and Discussion

3.1. Deep Blue Ocean and White Ocean Explants Have Different Efficiency to Generate Adventitious Root

To investigate the ability to form adventitious roots (AR) in *Campanula portenschlagiana*, both Deep Blue Ocean and White Ocean genotypes explants were set up in an aeroponic system and root formation was monitored since the first day of the experiment. Deep Blue Ocean explants started to form AR after 4 days of growth in the aeroponic system, while AR formation in White Ocean explants started after 15 days (Figure 1A). After 21 days, 100% of the Deep Blue Ocean explants and 25% of the White Ocean explants formed AR, respectively. The average root length in the Deep Blue Ocean genotype was 1.6 times higher than the root length in the White Ocean (Figure 1B). Deep Blue Ocean

showed 4 times more root per explant than White Ocean genotype (Figure 1C). When we analyzed the root biomass, we found that the fresh and dry weight of the White Ocean was 3.6 and 5.2 times lower than the Deep Blue Ocean, respectively (Figure 1D,E). Our results show that the Deep Blue Ocean genotype has a greater ability to form AR when compared with the White Ocean genotype.

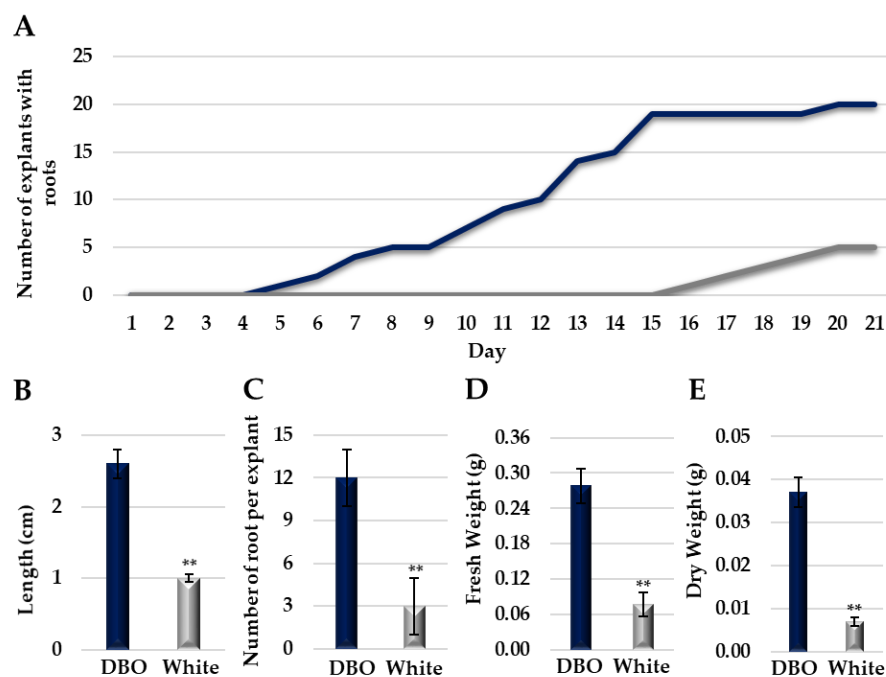


Figure 1. Adventitious root formation of Deep Blue Ocean and White Ocean genotypes. (A) Number of explants of Deep Blue Ocean (dark blue) and White Ocean (light gray) with adventitious root by day after cutting. (B) Average root length (cm) of adventitious root of Deep Blue Ocean (DBO) and White Ocean (White). (C) Number of roots per explant. (D) Root fresh weight (g). (E) Root dry weight (g). Error bars represent standard deviation. *t*-test significance: ** $p < 0.01$; $n = 20$.

3.2. Deep Blue Ocean and White Ocean Explants Show Contrasting Concentrations of Endogenous Plant Hormones

To better understand the differences in AR formation between Deep Blue Ocean and White Ocean, we performed plant hormone analyses at the basal cut site of both genotypes. Our analyses showed that two forms of auxin, indole-3-acetic acid (IAA) and indole-3-butyric acid (IBA), are higher concentrated in the Deep Blue Ocean when compared with the White Ocean genotype (Figure 2A,B). The free level of IAA at the basal cut site in explants was largely demonstrated to be essential to AR formation [3]. Additionally, the conversion of IBA to IAA seems to be an important step to AR formation in many species [4]. The IAA and IBA content differences between Deep Blue Ocean and White Ocean can partially explain the discrepancy in the AR formation capacity.

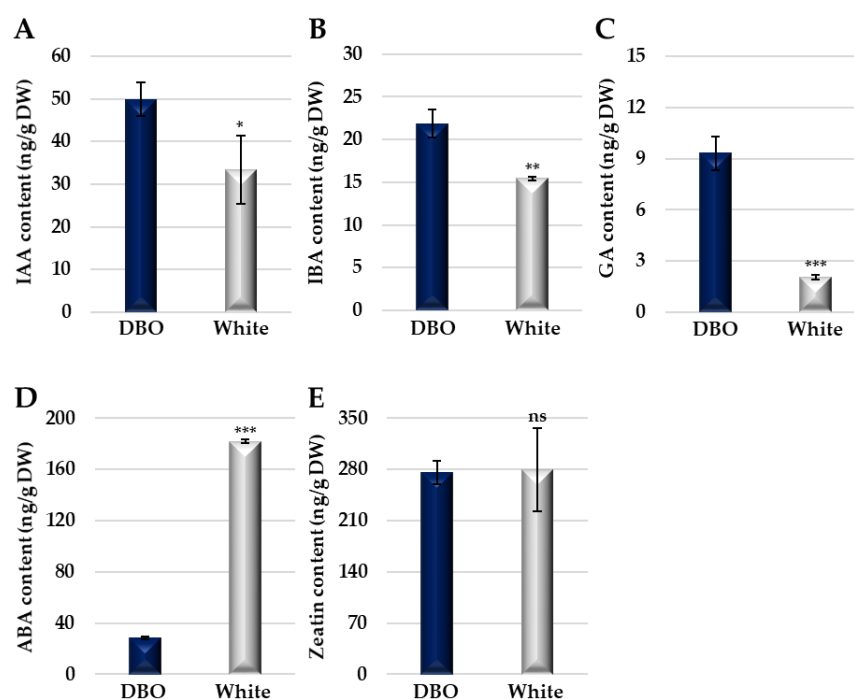


Figure 2. Plant hormone quantification of Deep Blue Ocean and White Ocean genotypes. (A) Indole-3-acetic acid (IAA) content of Deep Blue Ocean (DBO; dark blue) and White Ocean (White; light gray) in ng/g of dry weight (DW). (B) Indole-3-butyric acid (IBA) content. (C) Gibberellic acid 3 (GA) content. (D) Abscisic acid (ABA) content. (E) Trans-zeatin 6-purine (Zeatin) content. Error bars represent standard deviation. *t*-test significance: ** $p < 0.05$, * $p < 0.01$, *** $p < 0.001$, ns = no significance; $n = 3$.

Our results showed that gibberellic acid 3 (GA) content is 4.6 times higher in the Deep Blue Ocean when compared with the White Ocean genotype (Figure 2C). The role of GA in AR formation is largely unclear and contradictory. In *Arabidopsis* and *Populus*, studies indicate that GA is a negative regulator of AR formation [5,6], probably interfering with the IAA gradient at the basal cut site. In rice, GA stimulates AR formation via a mechanism that requires ethylene [7]. Although we do not know if GA triggers AR formation in *C. portenschlagiana*, our results can be indicative that GA participates in this process.

The content of abscisic acid (ABA) was 6.4 times higher in the White Ocean when compared with the Deep Blue Ocean genotype (Figure 2D), suggesting that a lower level of ABA may facilitate AR formation in *C. portenschlagiana*. In *Vaccinium corymbosum*, treatment with exogenous auxin increased the AR formation and decreased ABA endogenous content [8]. ABA was shown to inhibit AR emergence in rice and tomato [7,9].

Although cytokinins were shown to negatively regulate AR formation in several species [10], no significant difference in trans-zeatin 6-purine (Zeatin) content was observed among Deep Blue Ocean and White Ocean genotype (Figure 2E).

3.3. Amino Acids Treatments Can Increase AR Formation in *C. portenschlagiana*

In order to explore the AR formation ability in both Deep Blue Ocean and White Ocean genotypes, we treated the explants with two different amino acids, L-glutamate and L-tryptophan. L-glutamate and L-tryptophan increased 80% and 40% the number of rooted explants in the White Ocean genotype, respectively (Figure 3A), whereas in Deep Blue Ocean control and treatments with amino acids showed 100% of rooted explants.

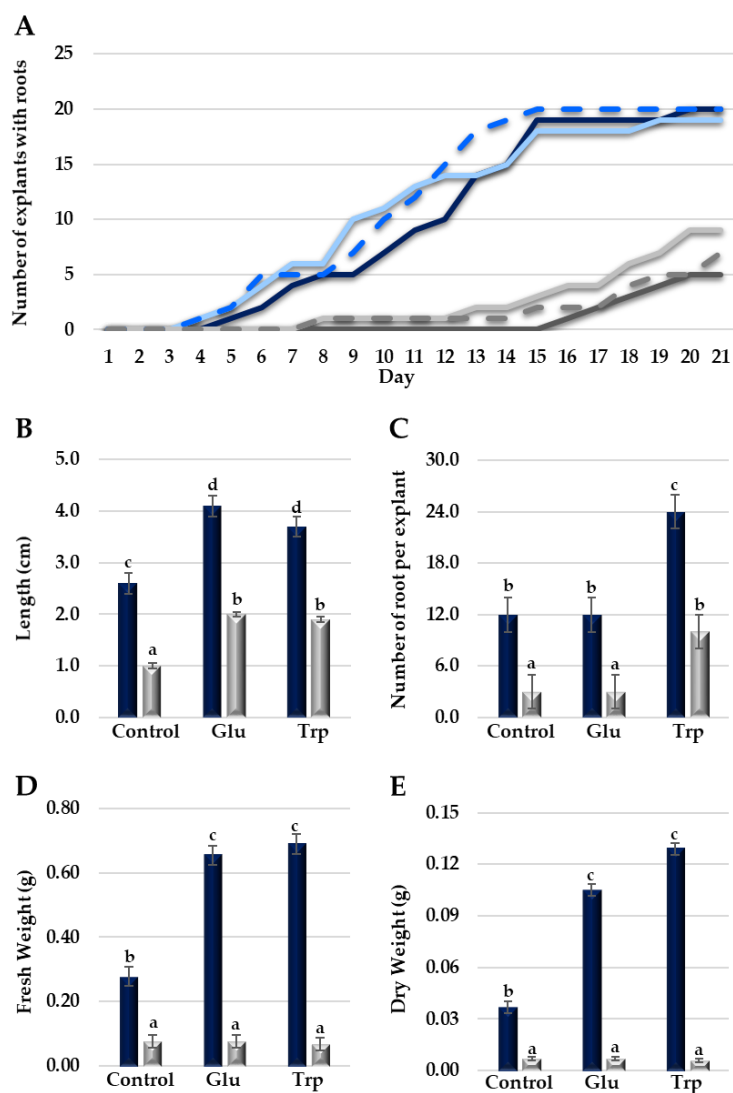


Figure 3. Effects of L-glutamate and L-tryptophan treatments on Deep Blue Ocean and White Ocean genotypes. (A) Number of explants of Deep Blue Ocean (dark blue) and White Ocean (dark gray), treated with L-glutamate (Deep Blue Ocean: light blue; White Ocean: light gray) or L-tryptophan (Deep Blue Ocean: blue dashed line; White Ocean: gray dashed line) with adventitious root by day after cutting. (B) Average root length (cm) of adventitious root of Deep Blue Ocean (dark blue) and White Ocean (light gray) treated with L-glutamate (Glu) or L-tryptophan (Trp). (C) Number of roots per explant. (D) Root fresh weight (g). (E) Root dry weight (g). Error bars represent standard deviation. Statistics were calculated through ANOVA, were mean values with different letters are significantly different at $p < 0.05$; $n = 20$.

Both L-glutamate and L-tryptophan treatments increased the root length in the Deep Blue Ocean and White Ocean (Figure 3B). Compared with control, L-glutamate did not change the number of roots per explant in both Deep Blue Ocean and White Ocean genotypes (Figure 3C). Root biomass in the White Ocean genotype did not change in both amino acids treatments when compared with the control (Figure 3D,E). Deep Blue Ocean genotype showed a significant increment in root biomass in both amino acids treatments, when compared with the control (Figure 3D,E). Glutamate and tryptophan amino acids seem to have different pathways to enhance AR formation in plants. Glutamate is an essential source for N remobilization, which is important in lateral root and AR formation [11]. Tryptophan participates in one of the two routes of IAA biosynthesis, and the conversion of tryptophan to IAA can occur via three different pathways [12]. Taken together,

our results demonstrate that amino acids treatments can increase AR formation in explants from both easy-to-root and difficult-to-root genotypes in *C. portenschlagiana*.

4. Conclusions

In the present study, we investigated the adventitious root (AR) formation of two genotypes of *Campanula portenschlagiana* by using an aeroponic system. We found that differences in endogenous plant hormones could explain the disparity in the AR formation ability between genotypes. We successfully established treatments that increased the AR formation in both genotypes, without using any exogenous plant hormones. The results provide additional evidence for the regulation of the AR formation process in *C. portenschlagiana*.

Author Contributions: Conceptualization, T.B. and I.P.; methodology, T.B. and I.P.; software, T.B.; validation, T.B.; formal analysis, T.B.; investigation, T.B.; resources, I.P.; data curation, T.B.; writing—original draft preparation, T.B.; writing—review and editing, I.P.; visualization, T.B.; supervision, I.P.; project administration, T.B. and I.P.; funding acquisition, I.P. All authors have read and agreed to the published version of the manuscript.

Funding: This research was funded by Green Development and Demonstration Program (GUDP).

Institutional Review Board Statement:

Informed Consent Statement: Not applicable.

Data Availability Statement:

Acknowledgments: The authors wish to thank Katrine Heinsvig Kjær and Inge Ulsted Sørensen for providing advice and Jan Uglebjerg Storm and Jacob Morten Andersen for providing the explants of *Campanula*.

Conflicts of Interest: The authors declare no conflict of interest.

References

- De Klerk, G.J.; Van der Krieken, W.; De Jong, J.C. Review—The formation of adventitious roots: New concepts, new possibilities. *In Vitro Cell. Dev. Biol. Plant* **1999**, *35*, 189–199. <https://doi.org/10.1007/s11627-999-0076-z>.
- Kang, C.; Zhai, H.; Xue, L.; Zhao, N.; He, S.; Liu, Q. A lycopen β -cyclase gene, IbLCYB2, enhances carotenoid contents and abiotic stress tolerance in transgenic sweetpotato. *Plant Sci.* **2018**, *272*, 243–254. <https://doi.org/10.1016/j.plantsci.2018.05>.
- Fattorini, L.; Falasca, G.; Kevers, C.; Mainero Rocca, L.; Zadra, C.; Altamura, M.M. Adventitious rooting is enhanced by methyl jasmonate in tobacco thin cell layers. *Planta* **2009**, *231*, 155–168. <https://doi.org/10.1007/s00425-009-1035-y>.
- Chen, L.; Tong, J.; Xiao, L.; Ruan, Y.; Liu, J.; Zeng, M.; Huang, H.; Wang, J.W.; Xu, L. YUCCA-mediated auxin biogenesis is required for cell fate transition occurring during de novo root organogenesis in *Arabidopsis*. *J. Exp. Bot.* **2016**, *67*, 4273–4284. <https://doi.org/10.1093/jxb/erw213>.
- Busov, V.; Meilan, R.; Pearce, D.W.; Rood, S.B.; Ma, C.; Tschaplinski, T.J.; Strauss, S.H. Transgenic modification of *gai* or *rgl1* causes dwarfing and alters gibberellins, root growth, and metabolite profiles in *Populus*. *Planta* **2006**, *224*, 288–299. <https://doi.org/10.1007/s00425-005-0213-9>.
- Mauriat, M.; Petterle, A.; Bellini, C.; Moritz, T. Gibberellins inhibit adventitious rooting in hybrid aspen and *Arabidopsis* by affecting auxin transport. *Plant J.* **2014**, *78*, 372–384. <https://doi.org/10.1111/tpj.12478>.
- Steffens, B.; Rasmussen, A. The physiology of adventitious roots. *Plant Physiol.* **2016**, *170*, 603–617. <https://doi.org/10.1104/pp.15.01360>.
- An, H.; Zhang, J.; Xu, F.; Jiang, S.; Zhang, X. Transcriptomic profiling and discovery of key genes involved in adventitious root formation from green cuttings of highbush blueberry (*Vaccinium corymbosum* L.). *BMC Plant Biol.* **2020**, *20*, 182. <https://doi.org/10.1186/s12870-020-02398-0>.
- McAdam, S.A.M.; Brodribb, T.J.; Ross, J.J. Shoot-derived abscisic acid promotes root growth. *Plant Cell Environ.* **2016**, *39*, 652–659. <https://doi.org/10.1111/pce.12669>.
- Gonin, M.; Bergougnoux, V.; Nguyen, T.D.; Gantet, P.; Champion, A. What makes adventitious root? *Plants* **2019**, *8*, 240. <https://doi.org/10.3390/plants8070240>.
- Druege, U.; Hilo, A.; Pérez-Pérez, J.M.; Klopotek, Y.; Acosta, M.; Shahinnia, F.; Zerche, S.; Franken, P.; Hajirezaei, M.R. Molecular and physiological control of adventitious rooting in cuttings: Phytohormone action meets resource allocation. *Ann. Bot.* **2019**, *123*, 929–949. <https://doi.org/10.1093/aob/mcy234>.
- Zhao, Y. Auxin biosynthesis. *Arab. Book* **2014**, *12*, e0173. <https://doi.org/10.1199/tab.0173>.