

CLASSIFICATION OF BREAST CANCER ULTRASOUND IMAGES WITH DEEP LEARNING-BASED MODELS

By

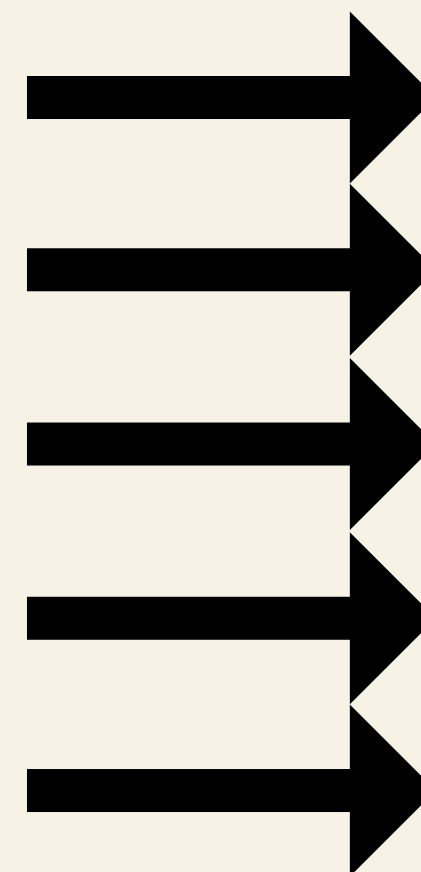
Fatih Uysal, Kafkas University, fatih.uysal@kafkas.edu.tr

Mehmet Murat KÖSE, Gazi University, mmurat.kose@gazi.edu.tr

ASEC
2022

Contents

Different Datasets
Computer-Aided Diagnosis
Dataset Informations
Model Architectures
Conclusion



3

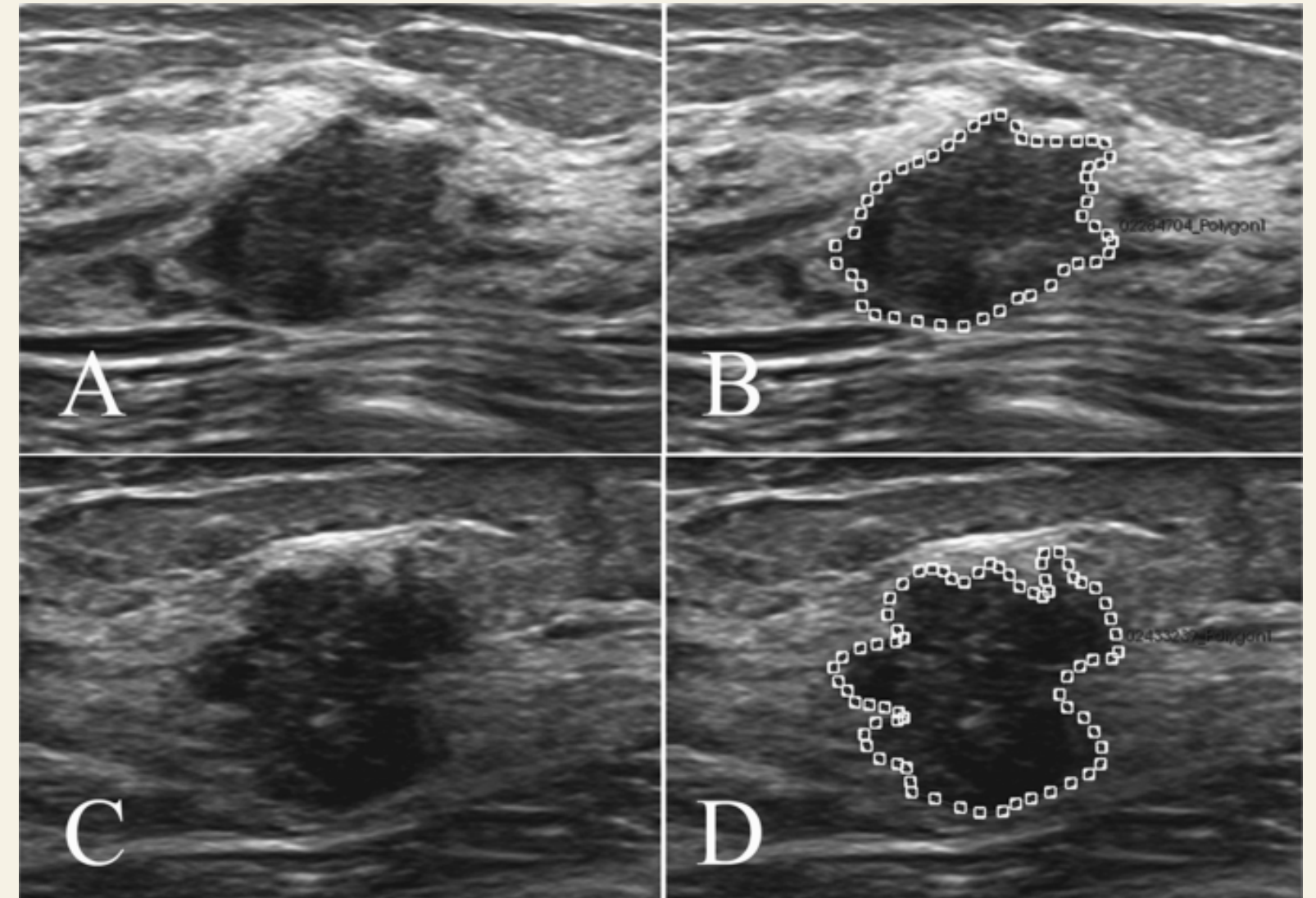
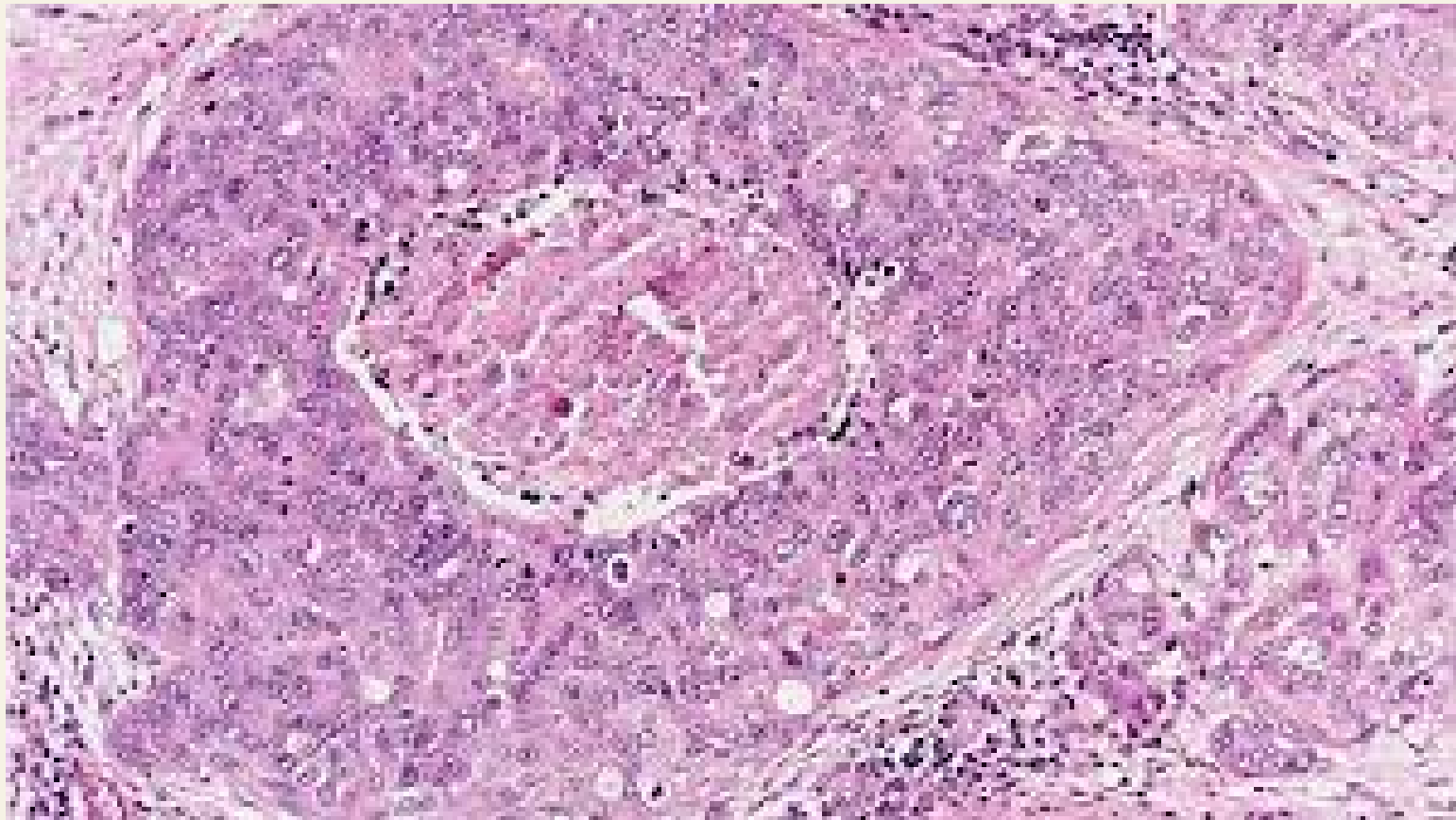
4,5

6

7,8,9

10

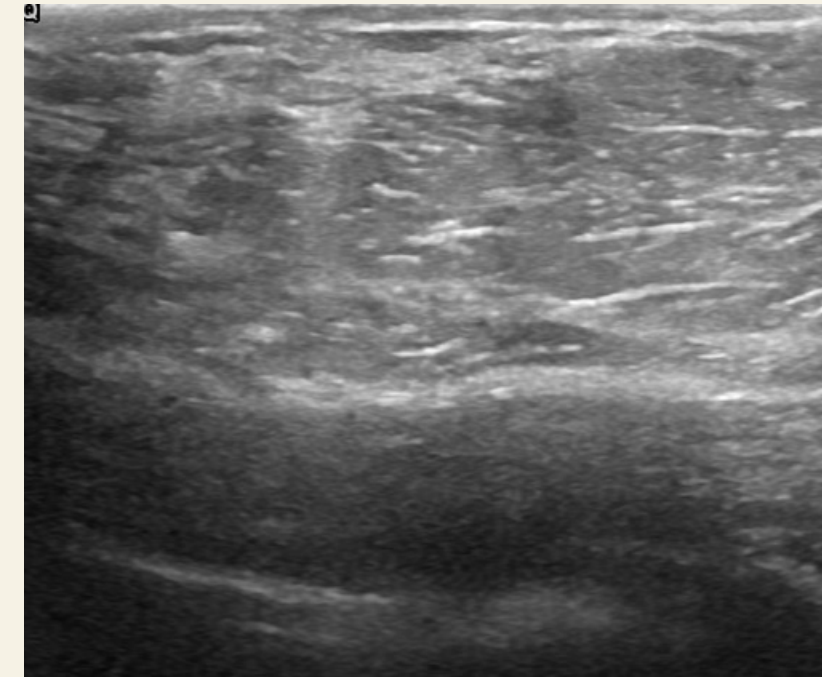
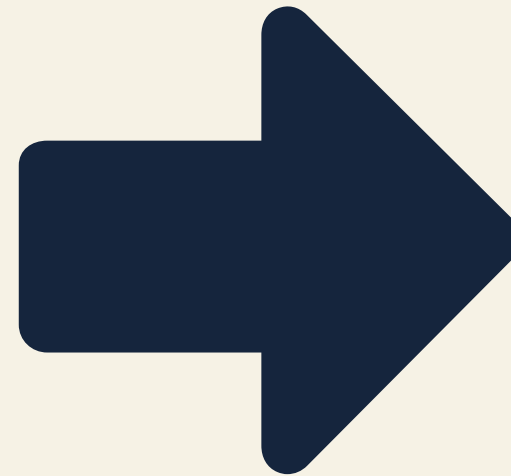
Different Datasets

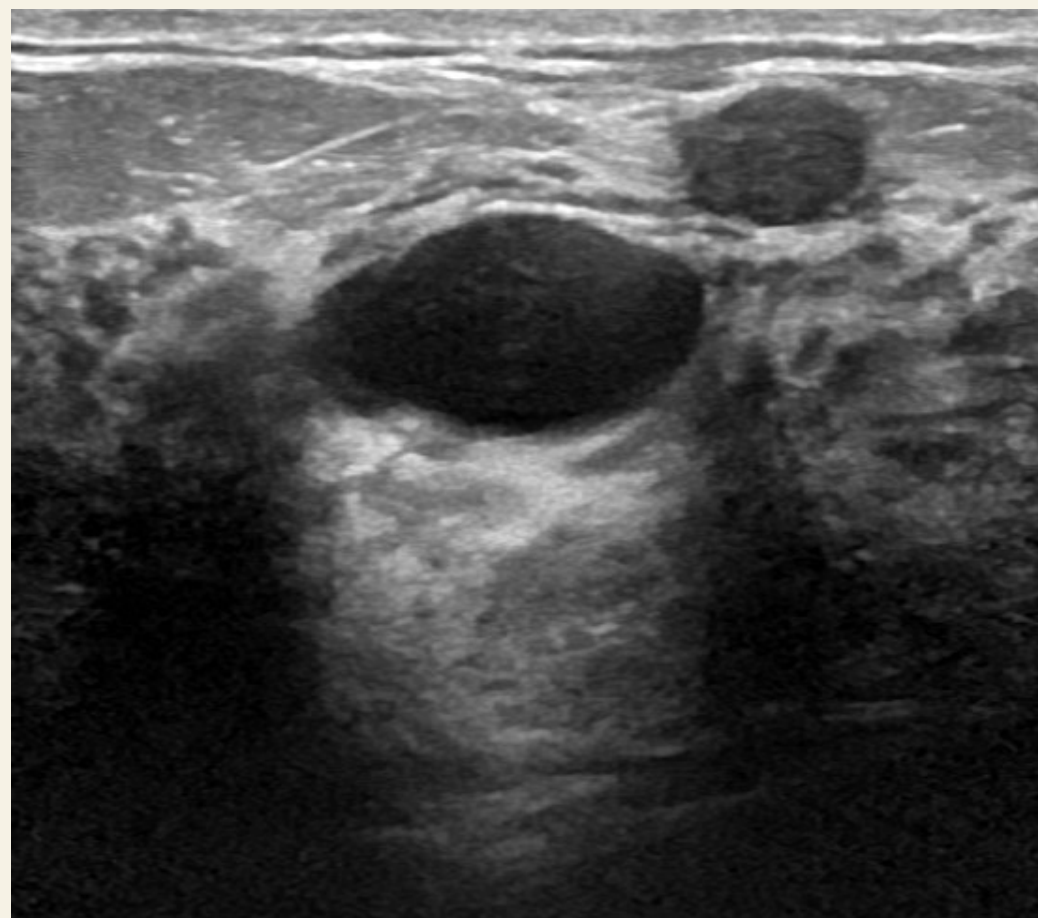


Computer-Aided Diagnosis

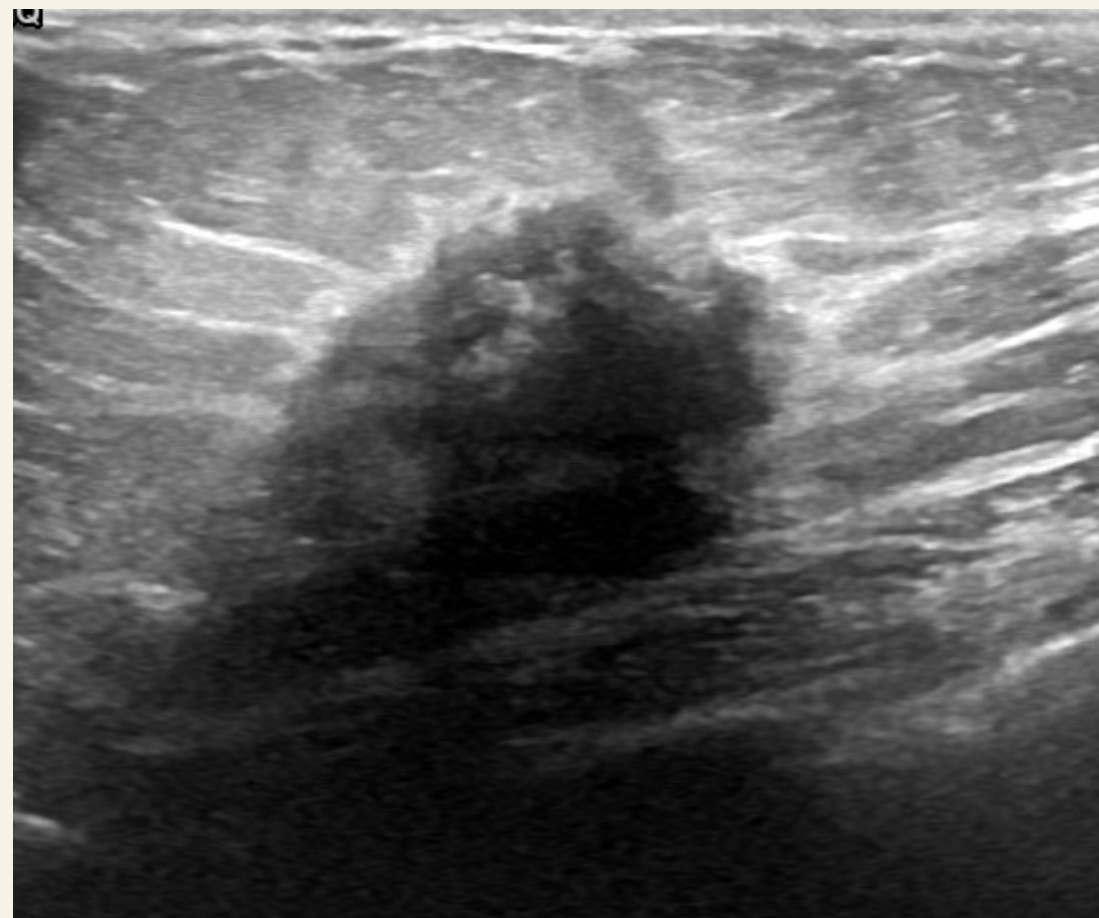


Computer-Aided Diagnosis

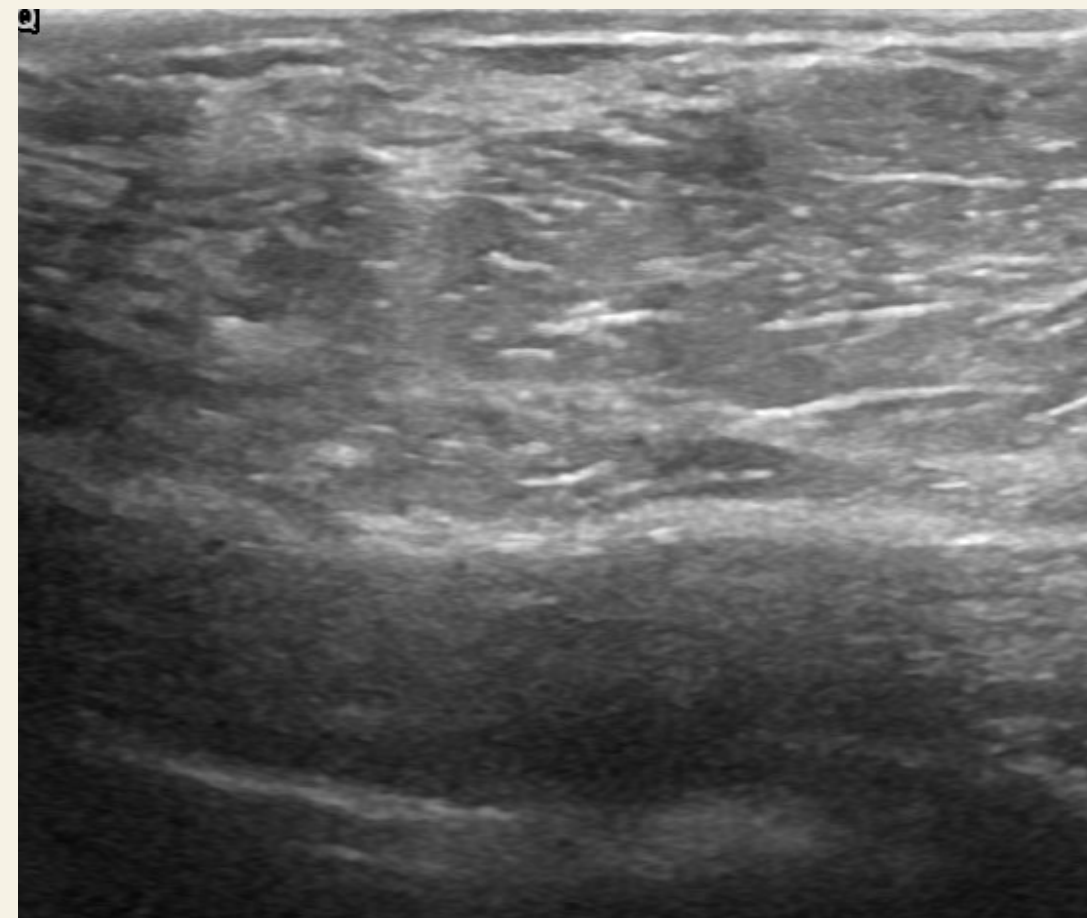




Benign: 437 Images



Malignant: 210 Images

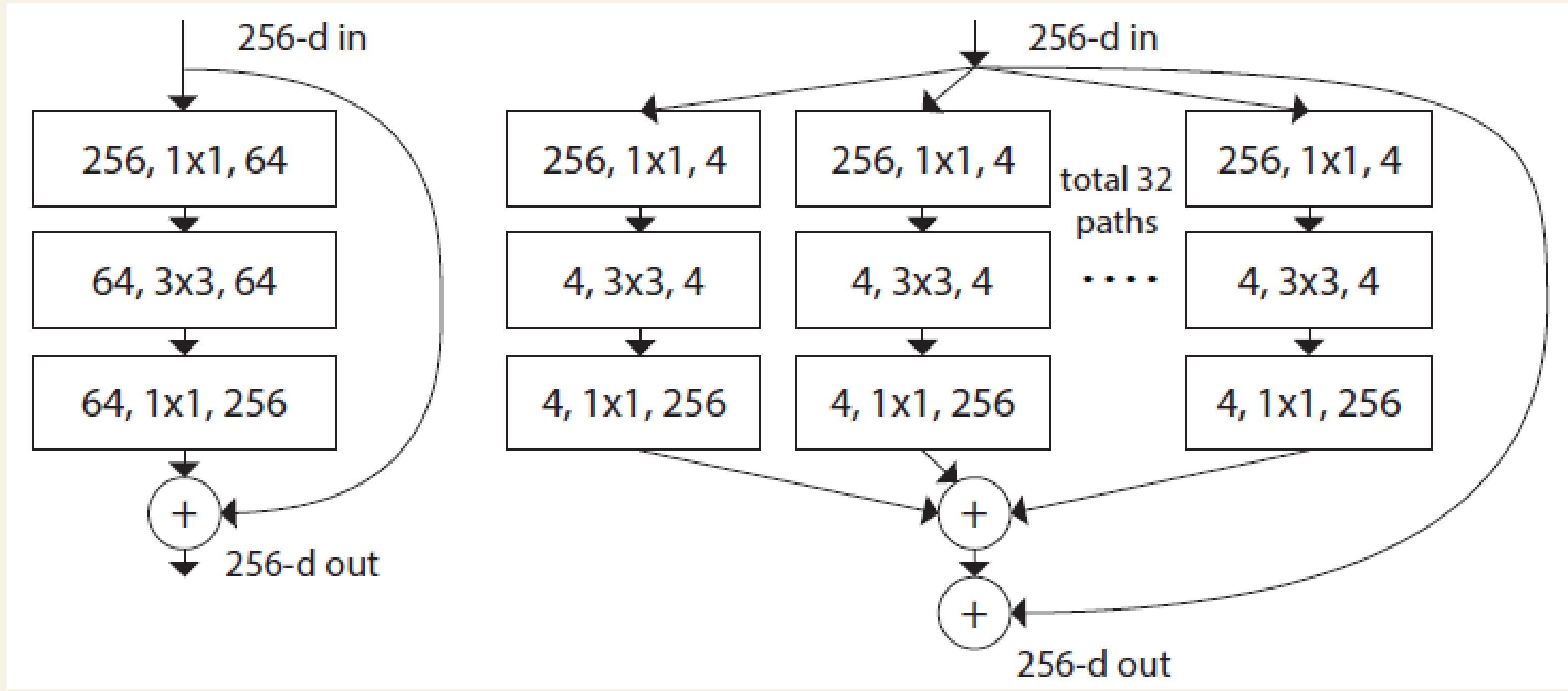


Normal Samples: 133 Images

Distribution of Images

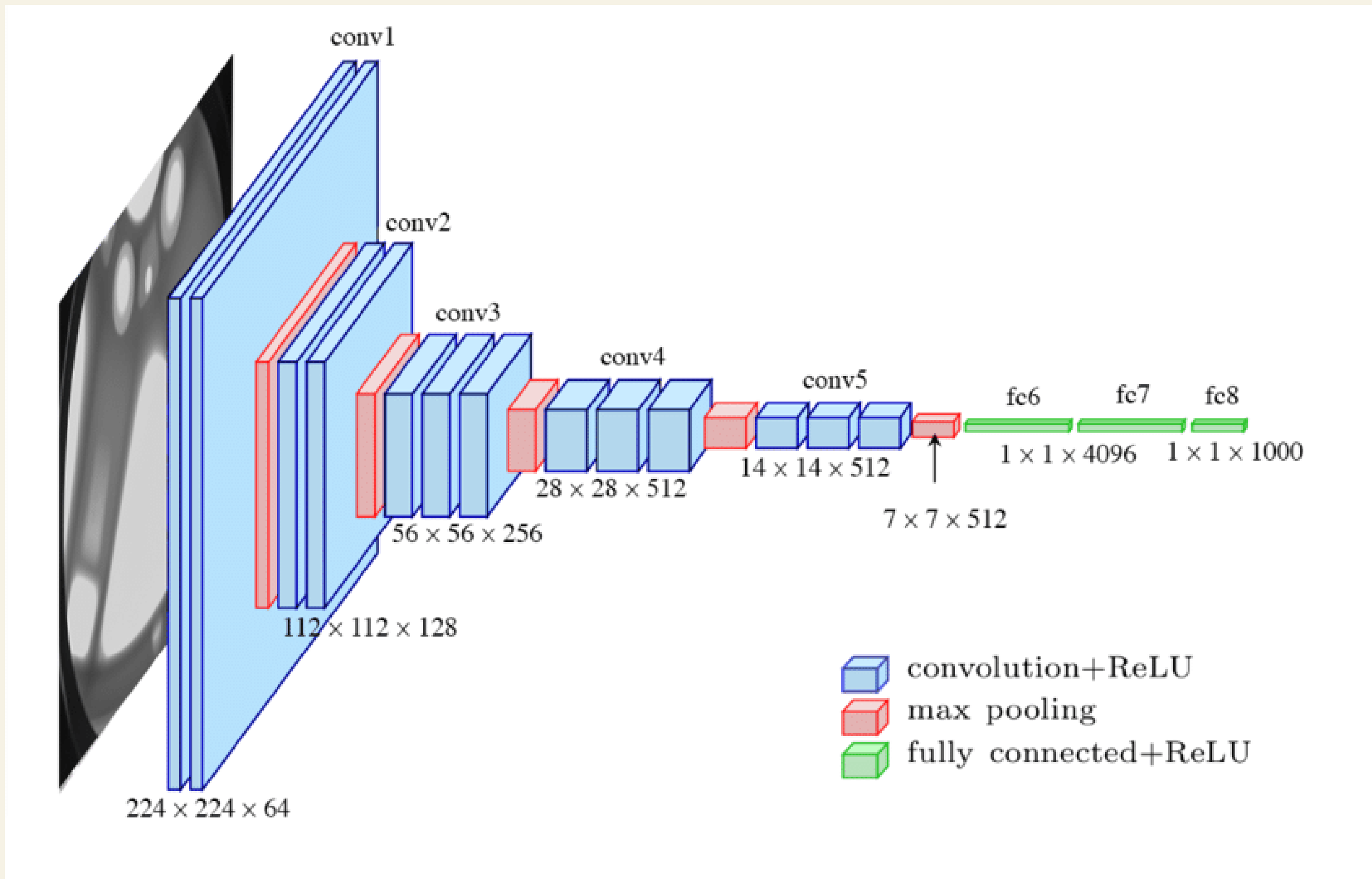
%70 For Training

%30 For Validation/Test



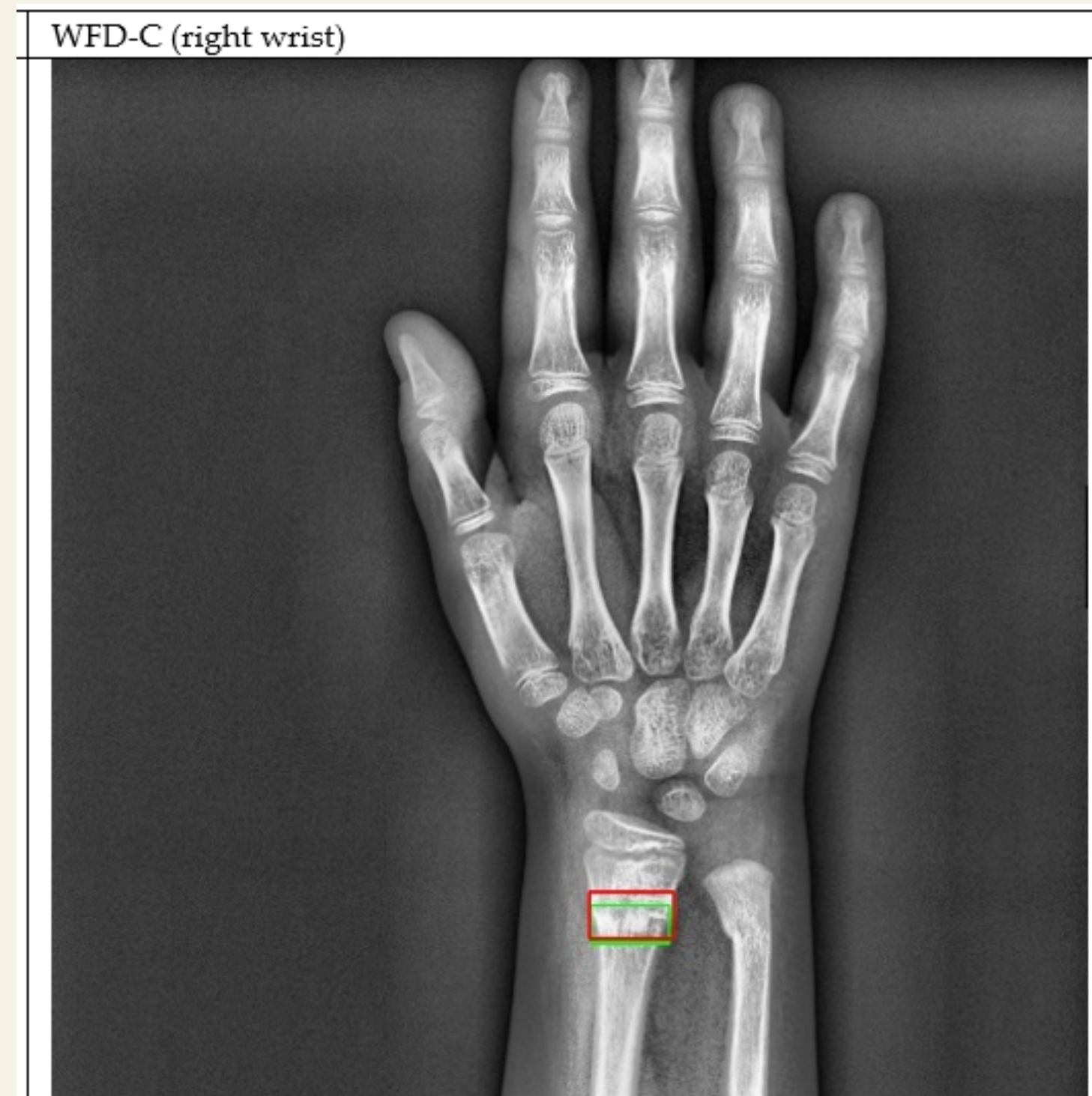
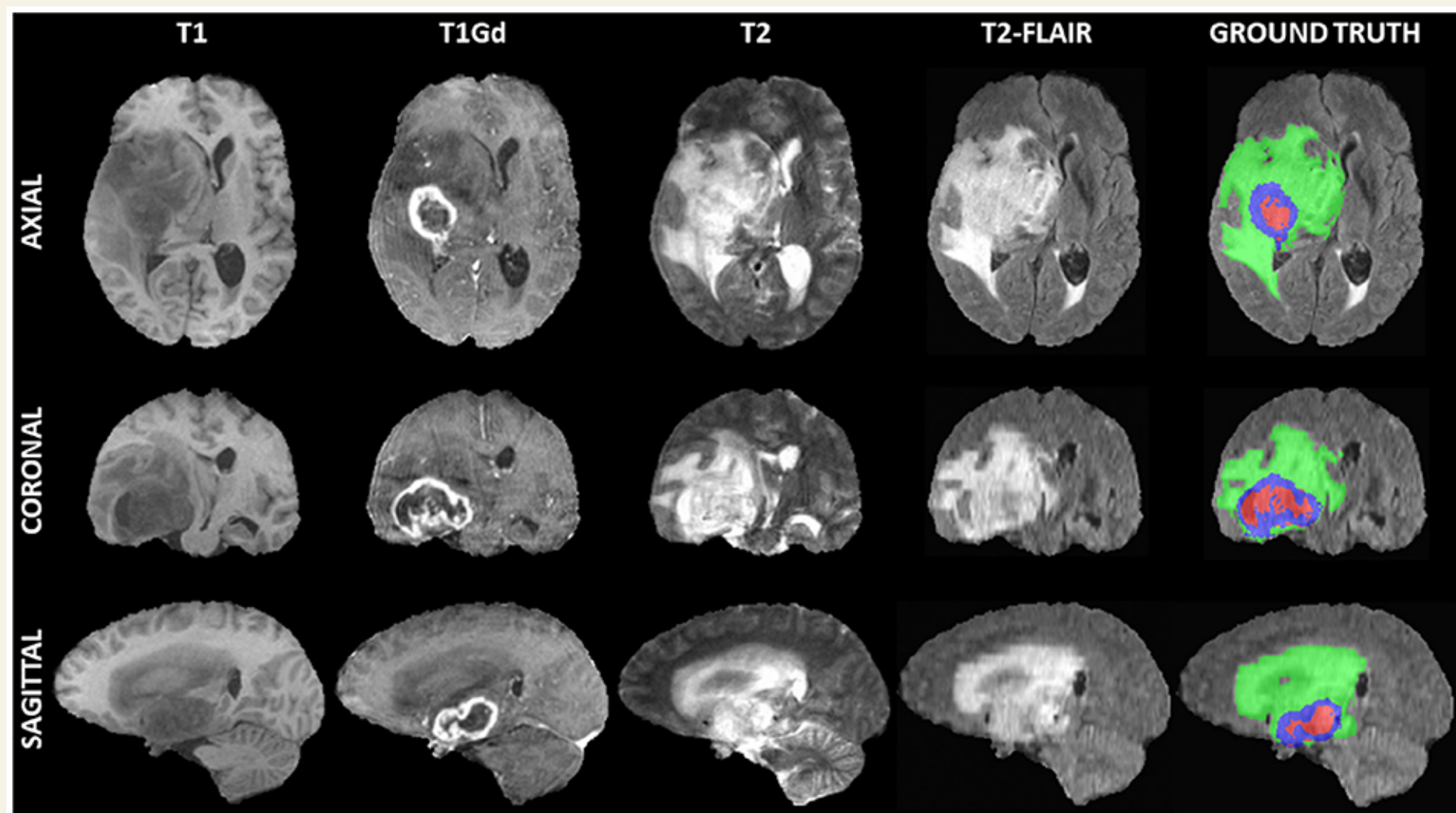
ResNeXt Architecture

%85.83



VGG Architecture
%81.11 Accuracy

Conclusion



References

Dataset: Al-Dhabyani, W., Gomaa, M., Khaled, H., & Fahmy, A. (2019). Dataset of breast ultrasound images. Data Brief 28, 104863 (2020).

He, K., Zhang, X., Ren, S., & Sun, J. (2016). Deep residual learning for image recognition. In Proceedings of the IEEE conference on computer vision and pattern recognition (pp. 770-778).

Xie, S., Girshick, R., Dollár, P., Tu, Z., & He, K. (2017). Aggregated residual transformations for deep neural networks. In Proceedings of the IEEE conference on computer vision and pattern recognition (pp. 1492-1500).

Simonyan, K., & Zisserman, A. (2014). Very deep convolutional networks for large-scale image recognition. arXiv preprint arXiv:1409.1556.

Hardalaç, F., Uysal, F., Peker, O., Çiçeklidağ, M., Tolunay, T., Tokgöz, N., ... & Mert, F. (2022). Fracture Detection in Wrist X-ray Images Using Deep Learning-Based Object Detection Models. Sensors, 22(3), 1285.