

Natural Clinoptilolite Nanoplatelets Production by a Friction-Based Technology [†]

Loredana Schiavo ^{1,*}, Vincenzo Boccia ², Lucrezia Aversa ³, Roberto Verucchi ³, Gianfranco Carotenuto ¹ and Teodoro Valente ¹

¹ CNR-IPCB, Piazzale E. Fermi 1, 80055 Portici, Italy; giancaro@unina.it (G.C.); teodoro.valente@cnr.it (T.V.)

² LUISS GUIDO CARLI University, Viale Pola 12, 00198 Roma, Italy; v.boccia@artigraficheboccia.com

³ CNR-IMEM, Institute of Materials for Electronics and Magnetism, Trento site c/o Fondazione Bruno Kessler, Via alla Cascata 56/C, 38123 Trento, Italy; lucrezia.aversa@cnr.it (L.A.); verucchi.roberto@cnr.it (R.V.)

* Correspondence: loredana.schiavo@cnr.it

[†] Presented at the 4th International Online Conference on Nanomaterials, 5–19 May 2023; Available online: <https://iocn2023.sciforum.net>.

Abstract: Molecular traps, based on natural zeolites, are being used to remove harmful gaseous substances (VOCs). These chemical devices must be supported on an adequate substrate (e.g., paper, polymeric films, etc.). To achieve very strong adhesion with the substrate, the planar shape is the most convenient chose for these systems. Clinoptilolite is a nanostructured material made of nanosized lamellas with a thickness of 40 nm. A new technological approach, based on the use of an abrasive drill, was selected to exfoliate a natural clinoptilolite sample, thus leading to a powder made of single lamellar crystals. The obtained lamellas have been characterized by TEM, SEM/EDS and XPS.

Keywords: clinoptilolite; nanoplatelets; lamella; molecular traps; VOCs; abrasion drill

Citation: Schiavo, L.; Boccia, V.; Aversa, L.; Verucchi, R.; Carotenuto, G.; Valente, T. Natural Clinoptilolite Nanoplatelets Production by a Friction-Based Technology. *Mater. Proc.* **2023**, *5*, x.
<https://doi.org/10.3390/xxxxx>

Academic Editor(s):

Published: 5 May 2023



Copyright: © 2023 by the authors. Submitted for possible open access publication under the terms and conditions of the Creative Commons Attribution (CC BY) license (<https://creativecommons.org/licenses/by/4.0/>).

1. Introduction

Porous ceramic nanostructures have several technologically useful physical/chemical properties that can be provided to a substrate to achieve a functional material. Zeolites have interesting adsorption properties [1–4], related to the ordered porosity, that characterizes their crystalline lattice. Indeed, a regular array of nanoscopic channels, crossing the full bulk structure of this silico-aluminate compound, can store a large amount of very small polar molecules (e.g., CO₂, CH₂O, CO, NH₃, etc.). Such molecules interact with the extra-framework cations by strong ion-dipole bonds (ca. 80 kcal/mol) [5]. A possible industrial application of the zeolite adsorption capability is represented by the molecular traps [6–8], which are special chemical devices able to remove harmful gaseous substances (i.e., VOCs) from the environment by a physical/chemical adsorption mechanism. The use of nano-sized zeolites as air pollutant adsorbent offers the great advantage of a faster adsorption kinetics due to the wide external surface area typical of a nanometric powder. Many nature-made zeolites have a nanostructured texture [9,10] that can lead to nanopowders if a convenient disaggregation technique is applied. In particular, natural clinoptilolite is made of randomly-oriented stacks of nano-platelets with a thickness of 40nm and the other two sizes of a few hundred microns [11]. It is possible to cleave up the nanoplatelets from the nanostructured mineral by using an opportunely selected disaggregation treatment. To detach the nanoplatelets each other, the application of a tangential force (i.e., a shear stress) is required. Such force can be conveniently generated by a friction acting at the surface of the raw mineral grains without applying significant compression. Due to the planar shape, nanoplatelets can be firmly supported on a cellulose or a polymeric substrate, since the large contact surface area can allow very good adhesion

characteristics. Recently, molecular traps based on powdered zeolite have been used to functionalize printed paper to solve the indoor pollution problem [12]. In this case, the ink used for the printing can guarantee the required adhesion characteristics.

Here, a simple technology based on abrasion drill has been adopted to obtain single platelets of clinoptilolite starting from a natural clinoptilolite sample. The obtained nanopowders have been morphologically characterized by Transmission Electron Microscopy (TEM) and Scanning Electron Microscopy (SEM/EDS). In addition, the chemical composition of these nanopowders has been investigated by X-ray photoelectron spectroscopy (XPS).

2. Materials and Methods

The exfoliation experiments were performed on mineral clinoptilolite provided by TIP (Technische Industrie Produkte, GmbH, Waibstadt, Germany). The raw material is made of polydisperse grains with a size ranging from a few millimeters to some centimeters. A stone having a diameter of ca. 5 cm was selected for the nanoplatelets cleavages treatments. In particular, a small clamp blocked the stone, and an abrasive drill was put in contact with one of the edges by applying different loads and angular speeds. The produced powders were collected in disposable weighing boats placed under the abrasive tip. Tests were performed under different experimental conditions (i.e., rotation speed and applied load). According to the TEM analysis performed on the powders, the highest exfoliation degree was obtained by operating at a constant speed corresponding to ca. 3,000 rpm and minimum applied load. A conically shaped drill-bit, made of nickel with embedded white corundum (Al_2O_3) abrasive grains, was selected since it allowed a larger exfoliation area. The conical drill-bit microstructure (see Figure 1) was investigated by using a Scanning Electron Microscope (SEM, Quanta 200 FEG microscope, FEI, Hillsboro, OR, USA).

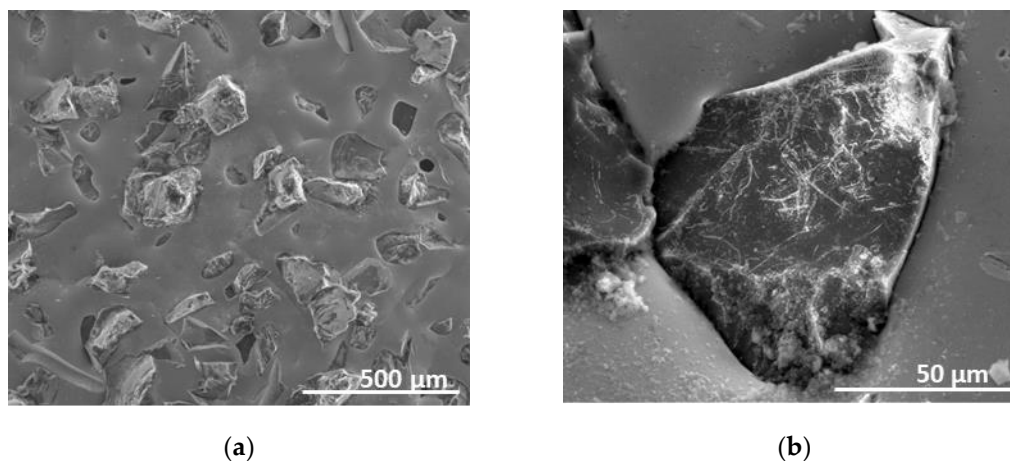


Figure 1. SEM-micrographs of the conical drill-bit surface (a) and detail of the corundum abrasive grain embedded in the nickel matrix (b).

According to these SEM-micrographs, the abrasive-corundum grains had an average size of ca. one hundred microns. Energy Dispersive spectrometer (EDS, FEI Quanta 200 FEG microscope, equipped with EDS, Oxford Inca Energy System 250, equipped with INCAx-act LN2-free detector, Oxford, UK) was carried out to determine the drill-bit material composition. The cleavage of clinoptilolite nanoplatelets was achieved by the effect of the friction forces acting at the interfaces between sample and corundum grains. The clinoptilolite single-lamellar crystals morphology was investigated mainly by using a Transmission Electron Microscope (TEM, FEI Tecnai G2 Spirit Twin, operating at 120 kV, equipped with a LaB_6 source and a high-resolution CCD camera, Eindhoven, The Netherlands). Carbon-coated copper grids were used. Such grids were prepared by placing a few drops of

a diluted dispersion of clinoptilolite nanoplatelets in ethanol (Aldrich, 96%). To obtain a well dispersed system, the suspension was previously sonicated for 10 min and then dried at room temperature. Further morphological information on the clinoptilolite single-lamellar crystals was obtained by comparing the TEM images with SEM micrographs of the same TEM grids.

XPS analysis was performed to identify the mineral's surface chemical properties. XPS has been carried out in an ultra-high-vacuum (UHV) chamber equipped with a non-monochromatized X-ray source (Mg K α photon at 1253.6 eV) and a VSW HA100 hemispherical analyzer (with PSP electronic power supply and control), leading to a total energy resolution of 0.86 eV. The binding energy (BE) scale of XPS spectra was calibrated using the Au 4f peak at 84.0 eV as a reference. The core level analysis has been performed by Voigt line-shape deconvolution after background subtraction of a Shirley function.

3. Results and Discussion

The morphology of the single lamellar crystals produced by sample cleavage with an abrasive drill has been investigated by using TEM. The TEM micrographs of these clinoptilolite nanoplatelets are shown in Figure 2.

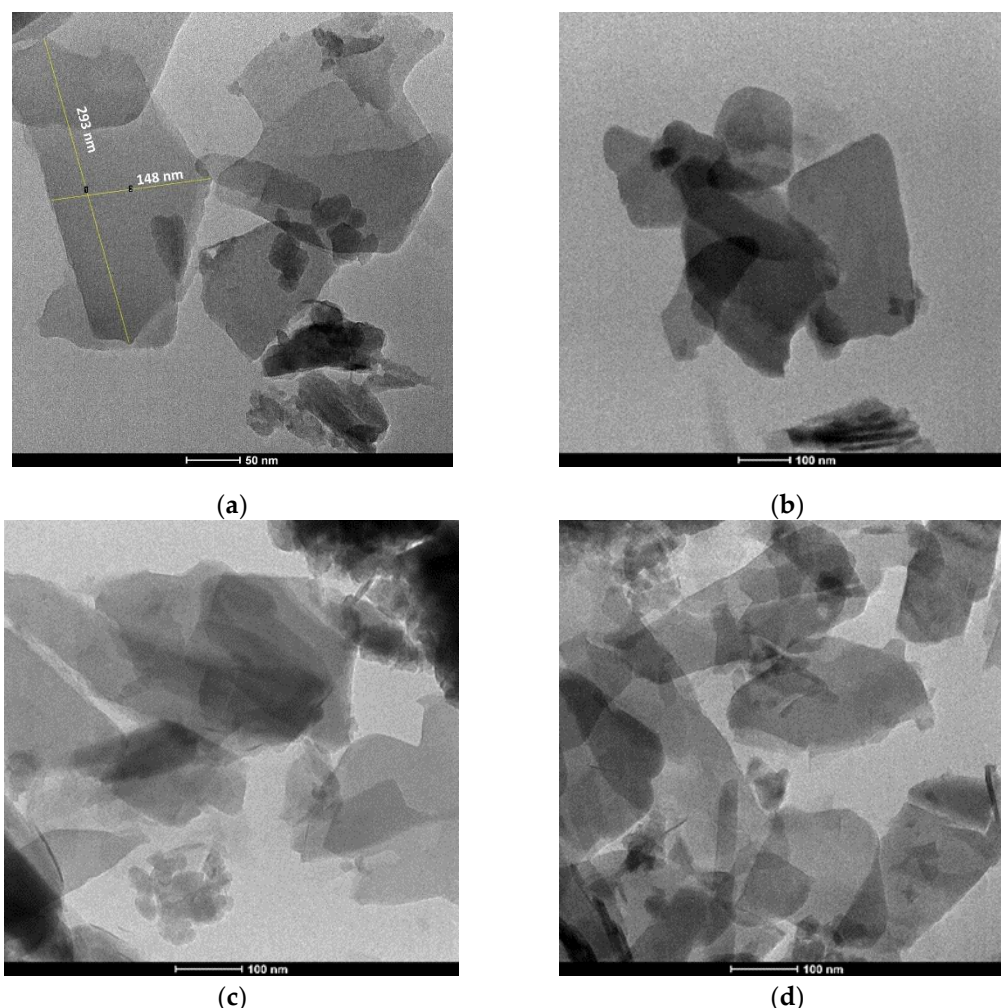


Figure 2. TEM-micrographs of small (a) and large (b–d) clinoptilolite lamellar fragments as obtained by the abrasion-drill technology.

The morphological analysis allows a perfect visualization of the aggregate inner structure. Indeed, owing to the low electronic cross-section of Si and Al atoms, these silico-aluminate compounds are semi-transparent to the TEM electron beam. Since the

morphologically investigated aggregates are constituted of platelets with a thickness of 40 nm, the electron beam path in the aggregates is small and a complete beam extinction is prevented. In addition, the high magnification of the TEM technique allows a quantitative investigation of such small aggregates, as shown in Figure 2a. The Image J 1.53t Software was used for the analysis. It is also possible to determine the number of lamellas contained in the aggregates, based on the grayscale characterizing the image. In fact, as visible in Figure 2, the number of lamellar fragments per aggregate, is less than ten. The surface morphology of the exfoliation product has been investigated also by SEM, which has been carried out on the same copper grid previously investigated by TEM. The SEM micrographs of the larger lamellar aggregates, having a diameter varying in the range between 500 nm–2 μm , are shown in Figure 3a,b.

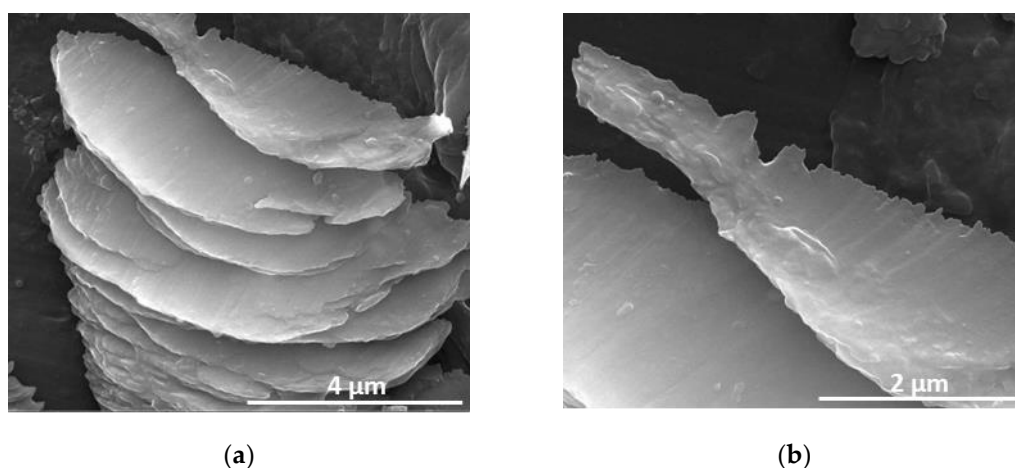
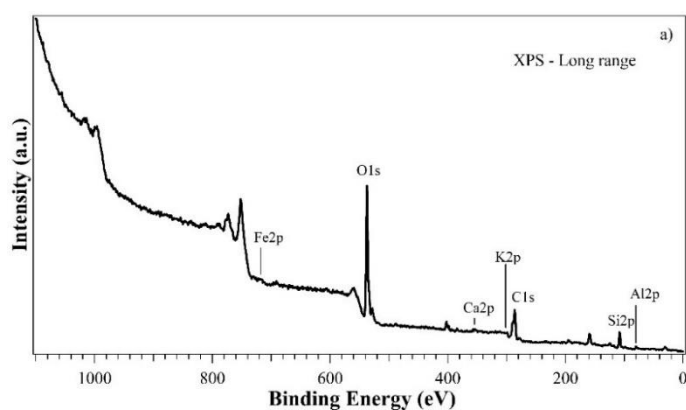


Figure 3. SEM-micrographs of lamellar aggregates obtained by the abrasion-drill technology characterized by a diameter of few microns (a) and morphological details of a single lamellar crystal (b).

XPS analysis performed on natural clinoptilolite powder revealed the presence of silicon (Si2p core level), aluminum (Al2p), oxygen (O1s), and in lower amounts, calcium (Ca2p), potassium (K2p), iron (Fe2p) (Figure 4a). All the core levels are shifted in binding energy (BE) due to charging phenomena; thus, taking also into account the energy reference from adventitious carbon, we calculated an energy shift of 5.1 eV. Al2p and Si2p BE positions are 74.5 eV and 103.1 eV (main), respectively (Figure 4, b and 4, c), in agreement with the literature data [13]. Quantitative analysis leads to the following surface atomic percentages: Si2p (30.8), Al2p (7.2), O1s (59.0), Ca2p (1.0), K2p (1.8) and Fe2p (0.2). In addition, in order to establish the zeolite sample nature, the Si/Al atomic ratio was determined, and corresponding to 4.3 ± 0.2 , which is compatible with the clinoptilolite form.



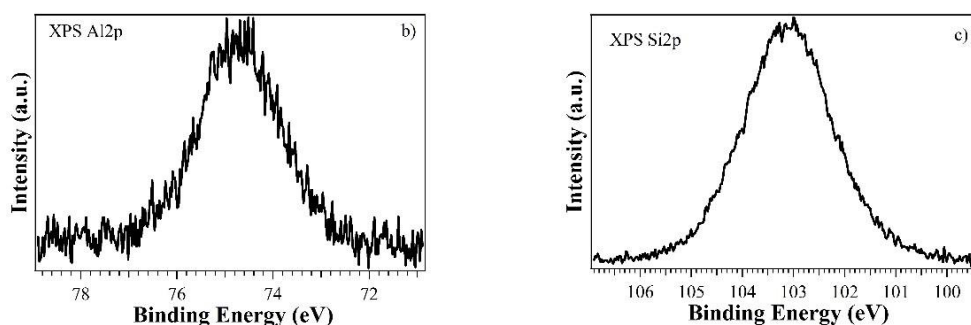


Figure 4. XPS Long range (Pass Energy 50eV) spectrum (a) and high resolution (Pass Energy 20 eV) spectra of Al2p and Si2p core levels (b,c). Natural Clinoptilolite was in powdered form.

The surface chemical information has been confirmed by Energy Dispersive X-ray spectroscopy (EDS) (see Figure 4). Both techniques identify the same elements with comparable relative abundances. However, due to the different probing depths of EDS and XPS, some differences in the Si/Al ratio are expected. According to the EDS results, it has been found a Si/Al atomic ratio of 5.9 ± 0.3 , which is near the characteristic clinoptilolite value. In addition, owing to the larger K and Ca cation concentrations, this mineral corresponded to Clinoptilolite-K,Ca. The complete chemical composition of the sample (i.e., framework and extra-framework elements) can be conveniently represented by the Kiviat chart shown in Figure 5a. As visible, the iron and magnesium cations are present at an impurity level.

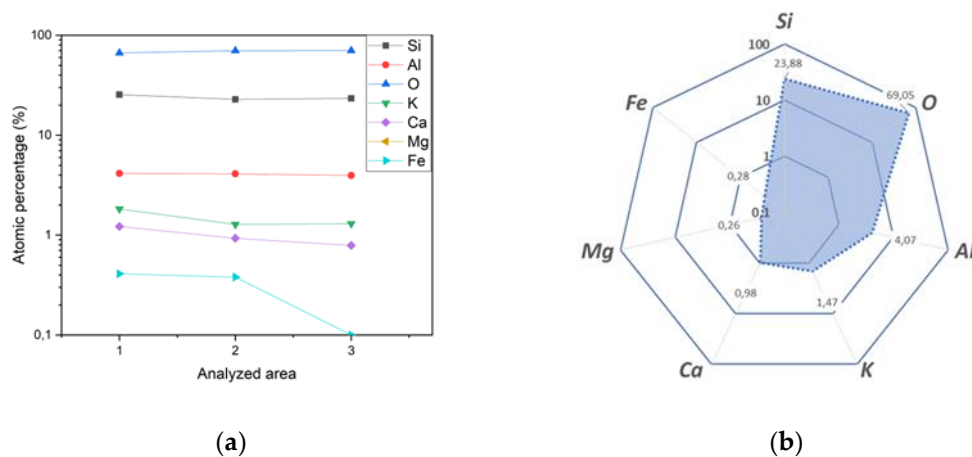


Figure 5. Variation of the elemental composition on the sample surface as measured by EDS analysis (a) and Kiviat chart of the respective average elemental percentage (b).

EDS measurements can be used also to evaluate the natural sample homogeneity by performing the analysis in different areas of the sample surface. The percentage of each element as a function of the analyzed areas on the sample surface is shown in the graph given in Figure 5b. A uniform framework composition characterized the full sample surface, while cation concentrations (especially iron) slightly changed.

4. Conclusions

Clinoptilolite single lamellar crystals and their small aggregates can be obtained by the simple abrasion-drill technology. The inner morphological structure of the aggregate has been conveniently investigated by TEM analysis thanks to the low electronic cross-section of the atoms present in the silico-aluminate compound and the thickness of the clinoptilolite lamellas of only 40 nm. The surface morphology of both single lamellar crystals and their aggregates has been also investigated by SEM. XPS/EDS analysis was

performed to determine the compositional information on the studied natural clinoptilolite. According to this analysis, the investigated zeolite sample was potassium-calcium clinoptilolite.

Author Contributions: Conceptualization, L.S., T.V. and G.C.; methodology, L.S., T.V. and G.C.; validation, L.S., V.B., L.A., R.V., G.C. and T.V.; formal analysis, L.S. and G.C.; investigation, L.S., L.A. and R.V.; resources, L.S., V.B., L.A., R.V. and G.C.; data curation, L.S., L.A., R.V. and G.C.; writing—original draft preparation, L.S., L.A., R.V. and G.C.; writing—review and editing, L.S., L.A., R.V. and G.C. All authors have read and agreed to the published version of the manuscript.

Funding: This research received no external funding.

Institutional Review Board Statement: Not applicable.

Informed Consent Statement: Not applicable.

Data Availability Statement: The data presented in this study are available on request from the corresponding author.

Acknowledgments: The authors are grateful to Maria Cristina Del Barone of LAMEST laboratory (IPCB-CNR) for SEM and TEM analysis, to Fabio Docimo of (IPCB-CNR) for his technical support in the sample preparation and useful discussion, to Alessandra Aldi and to Maria Rosaria Marcedula of (IPCB-CNR) for the technical support. The authors are grateful to Materias S.r.l.

Conflicts of Interest: The authors declare no conflict of interest.

References

1. Gargiulo, N.; Shibata, K.; Peluso, A.; Aprea, P.; Valente, T.; Pezzotti, G.; Shiono, T.; Caputo, D. Reinventing rice husk ash: Derived NaX zeolite as a high-performing CO₂ adsorbent. *Int. J. Environ. Sci. Technol.* **2018**, *15*, 1543–1550.
2. Djaeni, M.; Kurniasari, L.; Purbasari, A.; Sasongko, S.B. Activation of natural zeolite as water adsorbent for mixed-adsorption drying. Proceeding of the 1st International Conference on Materials Engineering (ICME) and 3rd AUN/SEED-Net Regional Conference on Materials (RCM), Yogyakarta, Indonesia, 25–26 November 2010.
3. Djaeni, M.; Kurniasari, L.; Sasongko, S.B. Preparation of natural zeolite for air dehumidification in food drying. *Int. J. Sci. Eng.* **2015**, *8*, 80–83.
4. Cruz, A.J.; Pires, J.; Carvalho, A.P.; Brotas De Carvalho, M. Adsorption of Acetic Acid by Activated Carbons, Zeolites, and Other Adsorbent Materials Related with the Preventive Conservation of Lead Objects in Museum Showcases. *J. Chem. Eng. Data.* **2004**, *49*, 725–731.
5. Sippel, K.H.; Quiocho, F.A. Ion-dipole interactions and their functions in proteins. *Protein Sci.* **2015**, *24*, 1040–1046.
6. Bol, R.A.; Harkness, D.D. The Use of Zeolite Molecular Sieves for Trapping Low Concentrations of CO₂ from Environmental Atmospheres. *Radiocarbon* **1995**, *37*, 643–647.
7. Li, H.X.; Donohue, J.M.; Cormier, W.E.; Chu, Y.F. Application of zeolites as hydrocarbon traps in automotive emission controls. *Stud. Surf. Sci. Catal.* **2005**, *158*, 1375–1382.
8. Hardie, S.M.L.; Garnett, M.H.; Fallick, A.E.; Rowland, A.P.; Ostle, N.J. Carbon Dioxide Capture Using a Zeolite Molecular Sieve Sampling System for Isotopic Studies (¹³C and ¹⁴C) of Respiration. *Radiocarbon* **2005**, *47*, 441–451.
9. Mastinu, A.; Kumar, A.; Maccarinelli, G.; Bonini, S.A.; Premoli, M.; Aria, F.; Gianoncelli, A.; Memo, M. Zeolite Clinoptilolite: Therapeutic Virtues of an Ancient Mineral. *Molecules* **2019**, *24*, 1517.
10. Ivanova, I.I.; Knyazeva, E.E. Micro-mesoporous materials obtained by zeolite recrystallization: Synthesis, characterization and catalytic applications. *Chem. Soc. Rev.* **2013**, *42*, 3671–3688.
11. Kowalczyk, P.; Sprynskyy, M.; Terzyk, A.P.; Lebedynets, M.; Namieśnik, J.; Buszewski, B. Porous structure of natural and modified clinoptilolites. *J. Colloid Interface Sci.* **2006**, *297*, 77–85.
12. Zhang, C.; Huang, Y.; Zhao, H.; Zhang, H.; Ye, Z.; Liu, P.; Zhang, Y.; Tang, Y. One-Pot Exfoliation and Functionalization of Zeolite Nanosheets for Protection of Paper-Based Relics. *ACS Appl. Nano Mater.* **2021**, *4*, 10645–10656.
13. Gruenert, W.; Muhler, M.; Schroeder, K.P.; Sauer, J.; Schloegl, R. Investigations of Zeolites by Photoelectron and Ion Scattering Spectroscopy. 2. A New Interpretation of XPS Binding Energy Shifts in Zeolites. *J. Phys. Chem.* **1994**, *98*, 10920–10929.

Disclaimer/Publisher's Note: The statements, opinions and data contained in all publications are solely those of the individual author(s) and contributor(s) and not of MDPI and/or the editor(s). MDPI and/or the editor(s) disclaim responsibility for any injury to people or property resulting from any ideas, methods, instructions or products referred to in the content.