

# Unraveling the Influence of the Atlantic Subpolar Gyre on the Thermohaline Circulation for the Past 20,000 Years. <sup>†</sup>

Gagan Mandal <sup>1,\*</sup>, and Shail Vijeta Ekka <sup>2</sup><sup>1</sup> Irreversible Climate Change Research Center, Yonsei University, South Korea; gagan\_mandal@yonsei.ac.kr<sup>2</sup> Department of Earth Sciences, National Central University, Taoyuan, Taiwan; shail.v.ekka@gmail.com

\* Correspondence: gagan\_mandal@yonsei.ac.kr

<sup>†</sup> Presented at the 6th International Electronic Conference on Atmospheric Sciences, online, and 27/08/2023.

**Abstract:** Recent studies have suggested a dynamic connection between the Atlantic Meridional Overturning Circulation (AMOC) and the North Atlantic subpolar gyre (SPG). This modeling study uses a fully coupled atmosphere-ocean-sea ice Earth system model to investigate the SPG dynamics throughout the last twenty-two thousand years. We found that the variations in SPG and AMOC strength are synchronized. Consequently, during cold events in the Northern Hemisphere, SPG strength declined simultaneously with AMOC strength and shallower mixed layer depths, which reduced northward meridional heat transport and increased Atlantic sea ice coverage.

**Keywords:** AMOC, Atlantic sea ice, Sea ice extent, Quasi-permanent sea ice, Mixed layer depth, Paleoclimate.

## 1. Introduction

The global Meridional Overturning Circulation (MOC) is a vital component of the Earth's climate system, which transports heat and freshwater between low and high latitudes. It consists of an upper (Atlantic Meridional Overturning Circulation) and a lower limb (Southern Meridional Overturning Circulation). The upper limb's Gulf Stream and the North Atlantic Current drive warm, salty waters northward in the upper ocean to form the Atlantic MOC (AMOC) in the North Atlantic basin [1]. These northward-moving, warm, salty waters lose buoyancy due to brine rejection, evaporation, and atmospheric heat loss. During winter, in the deep mixed layers, dense saline water transforms into dense waters and North Atlantic Deep Waters (NADW), which then travel back southward into the deep ocean [2]. Studies have shown AMOC may respond nonlinearly with a hysteresis response to climate change [3,4], such that it is a global candidate for tipping elements.

The Atlantic subpolar gyre (SPG) is a part of the upper limb of the AMOC. The SPG has been suggested to be tied to the AMOC and is one link in the network of global teleconnections that influences climate globally [5]. Variability in the North Atlantic SPG circulation has also been argued to be a primary driver of salinity fluctuations [6], such that salinity changes impact buoyancy and density stratification, which affects dense water formation. Meanwhile, the Labrador Sea region of the eastern subpolar North Atlantic is significantly influenced by Atlantic sea ice and SPG, where deep water formation occurs. Consequently, the SPG may be particularly sensitive to the amount of sea ice and related freshwater in the Labrador Sea, where deep water formation occurs [7].

The past twenty-two thousand years (ka) of Earth's climate history have observed a shift from colder to warmer temperatures with an increased greenhouse gas concentration. Meanwhile, this climate history also contains abrupt climate change episodes, which are important case studies to understand abrupt climate changes. Therefore, it is essential

**Citation:** To be added by editorial staff during production.

Academic Editor: Firstname Last-name

Published: date



**Copyright:** © 2023 by the authors. Submitted for possible open access publication under the terms and conditions of the Creative Commons Attribution (CC BY) license (<https://creativecommons.org/licenses/by/4.0/>).

to comprehend how the atmosphere-ocean-ice dynamics rearranged during the past climate. Consequently, in this manuscript, we focus on the potential of sea ice and its associated feedback on SPG and North Atlantic Ocean variability during the past twenty-two thousand years.

## 2. Materials and Methods

This study employs a fully coupled atmosphere-ocean-sea ice Earth system model (TraCE-21ka). The TraCE-21ka is a Community Climate System Model (CCSM3) model transient experiment which contains fully coupled Community Atmosphere Model version 3 (CAM3), the Parallel Ocean Program version (POP), Community Sea Ice Model version 5 (CSIM5), and the Community Land Surface Model version 3 (CLM3) [3]. The experiment was run at a T31\_gx3v5 resolution of about 3.75° latitudinal and longitudinal resolution. The model forcings consist of a transient change in incoming solar insolation, meltwater, greenhouse gasses, and continental ice sheet topography. The model simulation output is publicly available at Climate Data at the National Center for Atmospheric Research (<https://www.earthsystemgrid.org/project/trace.html>). [3] provides an in-depth discussion of the model forcings and simulations.

This study spans the past twenty-two thousand years before the present of the Earth's climate history. Notably, the 22 ka period covers the Last Glacial Maximum (LGM) (~21 ka – 19 ka), Heinrich stadial 1 (HS1) (~ 19 ka – 14.64 ka), Bølling-Allerød (BA) (14.64 ka – 12.85 ka), Meltwater Pulse 1A (MWP-1A) (14.65 ka – 14.31 ka), Younger Dryas (YD) (12.85 ka – 11.65 ka) and Mid-Holocene (MH) (~6 ka) periods. To compare the climate periods in the millennial timescale, we have defined LGM from 20 ka – 19 ka, HS1 from 16.5 ka – 15.5 ka, BA from 14.6 ka – 13.6 ka, YD from 12.6 ka – 11.6 ka, and MH from 6 ka – 5 ka periods.

## 3. Results and Discussion

Figure 1a–h shows the temporal evolution of sea ice, mixed layer depths, Atlantic Meridional Overturning Circulation (AMOC), and subpolar gyre (SPG) index for the past 22 ka. We found that the Northern Hemisphere (NH) sea ice extent (which means more than 15% sea ice concentration) and the NH quasi-permanent sea ice (which represents more than 90% sea ice concentration) analogous to perennial sea ice vary coherently with a Pearson correlation coefficient of 0.93 ( $p = 0$ ) (Figure 1a–b). The NH sea ice reduced during the NH warm BA period and extended during the NH cold LGM, HS1, and YD periods.

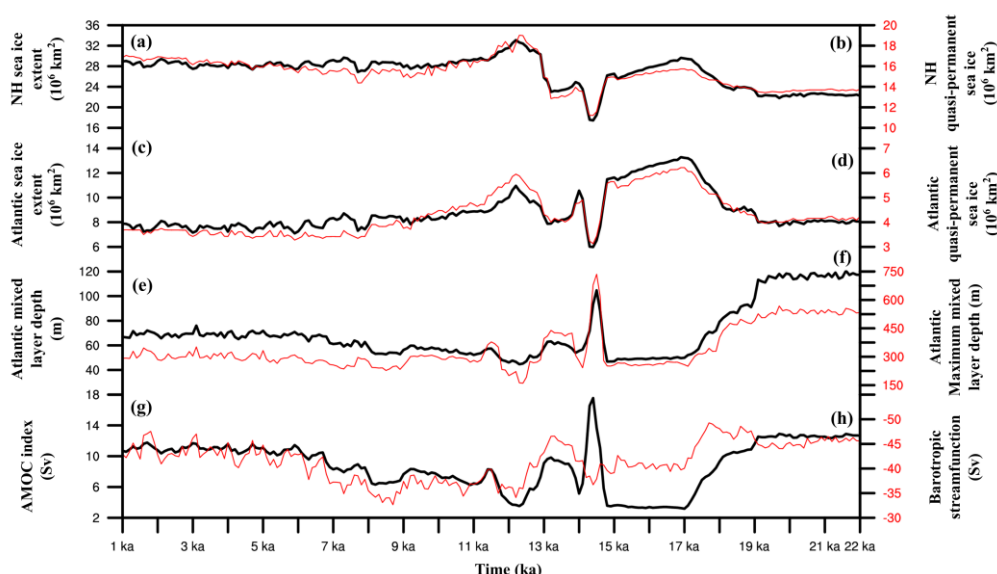


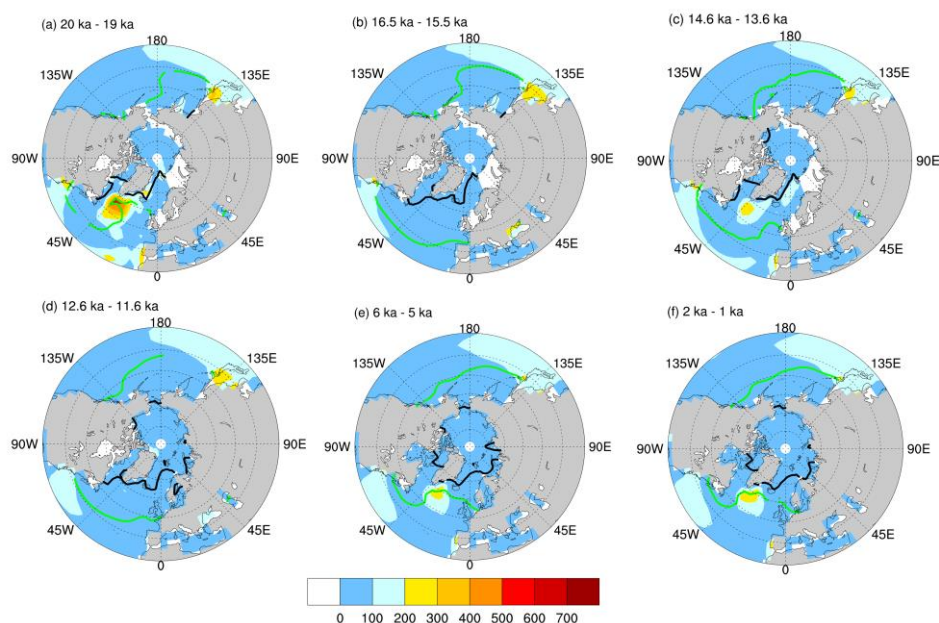
Figure 1. The time progression of (a, c) Northern Hemisphere (~35°N – ~87°N) (NH) and (b, d) Atlantic (~35°N – ~87°N and ~83°W – 0°W) sea ice extent (black) and quasi-permanent sea ice (red),

Atlantic mixed layer depths: (e) average (black) and (f) maximum (red), (g) AMOC index (maximum stream function value below 500 meters and between 20°N – 65°N [8]) (black), and (h) subpolar gyre (SPG) index (Absolute minimum barotropic streamfunction -32°N – 87°N and 90°W – 0°W) (red) for the past twenty-two thousand years.

Meanwhile, due to the prescribed lower Ice sheet topography, the NH sea ice coverage is extended after 13.1 ka compared to the LGM period. The TraCE-21ka experiment changed the height and breadth of the continental ice sheets once every 500 years following the ICE-5G reconstruction [9]. The ICE-5G reconstruction coastlines at the LGM were altered at 13.1 ka due to the retreat of the Fennoscandian Ice Sheet from the Barents Sea and at 12.9 ka by the opening of the Bering Strait. These modified coastlines increase NH ocean surface area and a corresponding increase in sea ice coverage. Meanwhile, the emergence of Hudson Bay also changed the Holocene coastlines at 7.6 ka. The last coastal adjustment happened at 6.2 ka with the entrance of the Indonesian through flow, following which the TraCE-21ka simulation adopted the present-day coastlines.

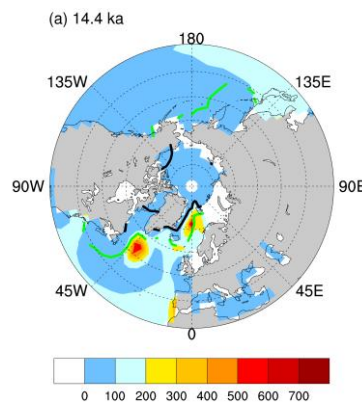
We analyzed the sea ice evolution in the Atlantic Ocean sector to comprehend the dynamics of sea ice with the AMOC and SPG. Similar to NH sea ice, we found that the Atlantic sea ice extent and quasi-permanent sea ice coverage have a strong positive correlation ( $r = 0.93$ ;  $p = 0$ ) (Figure 1c–d). The Atlantic sea ice also reduced during the NH warm BA period and extended during the NH cold LGM, HS1, and YD periods. However, unlike NH sea ice coverage, Atlantic sea ice coverage decreased significantly since the YD cold period.

The global Meridional Overturning Circulation closes at the NH high-latitude seas. Here, the winter-time deep convections in mixed layers form deep waters, eventually forming North Atlantic deep water (NADW) and the upper limb of the MOC. We found that average and maximum mixed layer depth vary coherently with a Pearson correlation coefficient of 0.89 ( $p = 0$ ) (Figure 1e–f). The mixed layer depth decreased during HS1 and YD, which indicates reduced deep convection and weakened AMOC strength (Figure 1g) in agreement with previous studies [10–13]. The reduction in the AMOC strength weakened the upper meridional overturning cell, inducing a bipolar seesaw response [11], and reduced the northward meridional heat transport. The reduction in northward heat transport resulted in extended Atlantic sea ice coverage (Figure 1c–d). Thus, deeper mixed layer depth representing stronger AMOC and reduced sea ice coverage is found during LGM, BA, MH, and from 2 ka to 1 ka (Figure 2a, c, e, and f) periods. On the other hand, shallower mixed layer depth representing weakened AMOC and extended sea ice coverage is found during HS1 and YD (Figure 2b and d) periods.



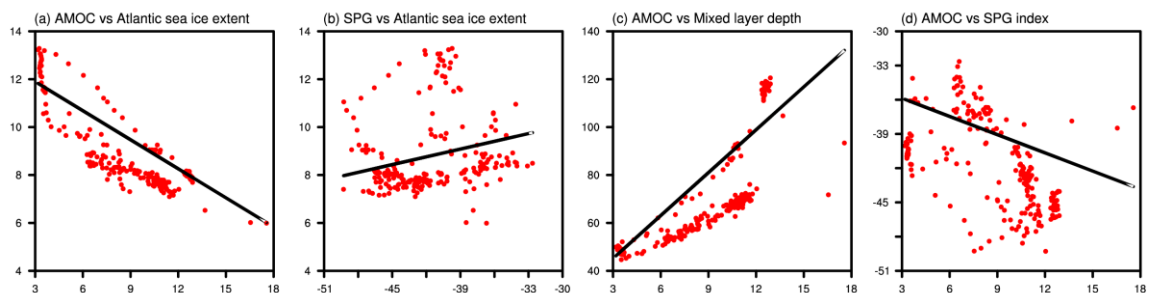
**Figure 2.** The NH mixed layer depth (color shaded; units are in meters) overlying the sea ice extent (green contour line) and quasi-permanent sea ice coverage (black contour line). (a) LGM from 20 ka – 19 ka, (b) HS1 from 16.5 ka – 15.5 ka, (c) BA from 14.6 ka – 13.6 ka, (d) YD from 12.6 ka – 11.6 ka, (e) MH from 6 ka – 5 ka periods, and (f) from 2 ka – 1 ka.

According to Fairbanks [14], the sea level rise of around 20 m in roughly 300 – 500 years characterizes the Meltwater Pulse 1A (MWP-1A), which caused the BA warm period. The 20 m sea level rise is attributed to NH origin [9], which resulted in the AMOC collapse in climate models [15]. However, studies have disclosed that more than 5 m NH meltwater forcing caused the AMOC to shut down completely, whereas proxy records indicate a weakened AMOC [10]. Therefore, the TraCE-21ka used 20 Sverdrup (Sv; 1 Sv =  $10^6 \text{ m}^3\text{s}^{-1}$ ) NH meltwater forcing (freshwater flux) and 60 Sv Antarctic meltwater forcing during the MWP-1A. Right after the 20 Sv injection, the experiment abruptly terminated the meltwater forcing. We found an anomalous overshooting of AMOC and mixed layer depth and reduced Atlantic sea ice coverage to the abrupt stopping of prescribed unrealistic meltwater forcing during BA. The invigoration of AMOC abruptly increased the northward heat transport [3], resulting in the lowest Atlantic sea ice coverage during the past 22 ka period (**Figure 3**).



**Figure 3.** The NH mixed layer depth (color shaded; units are in meters) overlying the sea ice extent (green contour line) and quasi-permanent sea ice coverage (black contour line) during the 14.4 ka period.

We performed a linear regression between the climate variables at 95% confidence intervals to understand their relationship throughout the past twenty-two thousand years. The Atlantic Meridional Overturning Circulation (AMOC) index and Atlantic sea ice extent are significantly negatively correlated with a Pearson correlation coefficient of  $-0.84$  ( $p = 0$ ) and regression coefficient of  $-0.40$  (standard error (SE) =  $\approx 0.02$ ) (**Figure 4a**). Thus, the AMOC strength decreases as Atlantic sea ice coverage expands because the expanded sea ice covers the site of deep convection (shallower mixed layer) and would inhibit the deep water formation and weaken AMOC.



**Figure 4.** The linear regression at 95% confidence intervals: (a) Atlantic Meridional Overturning Circulation (AMOC) index and Atlantic sea ice extent, (b) Subpolar gyre (SPG) index and Atlantic sea ice extent, (c) AMOC index and average mixed layer depth, and (d) AMOC and SPG index.

Meanwhile, the subpolar gyre (SPG) index and Atlantic sea ice extent are spread out with an insignificant ( $p = 0.06$ ) Pearson correlation coefficient of  $\approx 0.13$  and regression coefficient of  $\approx 0.11$  ( $SE = \approx 0.03$ ) (**Figure 4b**). Although the SPG and sea ice are out of phase during HS1 and YD northern hemisphere cold periods, the detailed variability needs further investigation.

We found that the AMOC index and average mixed layer depth are in phase ( $r = 0.78$ ;  $p < 0.005$ ) significantly and have a regression coefficient of 5.97 ( $SE = \approx 0.3$ ) (**Figure 4c**). Thus deeper mixed layer depth results in increased deep convection and strengthened AMOC. The North Atlantic current transports heat and salty water to the SPG, and the SPG transports cold fresh water into the AMOC. The AMOC and SPG index are found to be in phase significantly, with a Pearson correlation coefficient of 0.53 ( $p < 0.005$ ) and regression coefficient of 0.53 (standard error (SE) =  $\approx 0.07$ ) (**Figure 4d**). Moreover, after removing the unrealistic AMOC index from 14.5 ka to 14.3 ka, the regression coefficient increases to 0.78. Consequently, the SPG strength increased as AMOC strengthened.

This study shows that the sea ice coverage, AMOC, and SPG strength are closely interconnected in the subpolar Atlantic throughout the past 22 ka period.

**Supplementary Materials:** Not applicable.

**Author Contributions:** Conceptualization, G.M. and S.V.E.; methodology, G.M., and S.V.E.; software, G.M.; formal analysis, G.M.; investigation, G.M.; writing—original draft preparation, G.M., and S.V.E.; writing—review and editing, G.M., and S.V.E.; visualization, G.M.; supervision, G.M. All authors have read and agreed to the published version of the manuscript."

**Funding:** This research received no external funding.

**Institutional Review Board Statement:** Not applicable.

**Informed Consent Statement:** Not applicable.

**Data Availability Statement:** The output data from the TraCE-21ka experiment are publicly accessible at <https://www.earthsystemgrid.org/project/trace.html>. The data was last accessed on August 27, 2023.

**Acknowledgments:** Not applicable.

**Conflicts of Interest:** The authors declare no conflict of interest.

## References

1. Buckley, M.W.; Marshall, J. Observations, inferences, and mechanisms of the Atlantic Meridional Overturning Circulation: A review. *Reviews of Geophysics* 2016, 54, 5-63, doi:10.1002/2015rg000493.
2. Broecker, W. The Great Ocean Conveyor. *Oceanography* 1991, 4, 79-89, doi:10.5670/oceanog.1991.07.
3. Liu, Z.; Otto-Bliesner, B.L.; He, F.; Brady, E.C.; Tomas, R.; Clark, P.U.; Carlson, A.E.; Lynch-Stieglitz, J.; Curry, W.; Brook, E.; et al. Transient simulation of last deglaciation with a new mechanism for Bolling-Allerod warming. *Science* 2009, 325, 310-314, doi:10.1126/science.1171041.
4. Liu, W.; Liu, Z.; Cheng, J.; Hu, H. On the stability of the Atlantic meridional overturning circulation during the last deglaciation. *Climate Dynamics* 2014, 44, 1257-1275, doi:10.1007/s00382-014-2153-1.
5. Klockmann, M.; Mikolajewicz, U.; Kleppin, H.; Marotzke, J. Coupling of the Subpolar Gyre and the Overturning Circulation During Abrupt Glacial Climate Transitions. *Geophysical Research Letters* 2020, 47, doi:10.1029/2020gl090361.
6. Häkkinen, S.; Rhines, P.B.; Worthen, D.L. Warm and saline events embedded in the meridional circulation of the northern North Atlantic. *Journal of Geophysical Research* 2011, 116, doi:10.1029/2010jc006275.
7. Li, C.; Born, A. Coupled atmosphere-ice-ocean dynamics in Dansgaard-Oeschger events. *Quaternary Science Reviews* 2019, 203, 1-20, doi:10.1016/j.quascirev.2018.10.031.
8. Michel, S.L.L.; Swingedouw, D.; Ortega, P.; Gastineau, G.; Mignot, J.; McCarthy, G.; Khodri, M. Early warning signal for a tipping point suggested by a millennial Atlantic Multidecadal Variability reconstruction. *Nat Commun* 2022, 13, 5176, doi:10.1038/s41467-022-32704-3.
9. Peltier, W.R. Global glacial isostasy and the surface of the ice-age Earth: The ICE-5G (VM2) Model and GRACE. *Annual Review of Earth and Planetary Sciences* 2004, 32, 111-149, doi:10.1146/annurev.earth.32.082503.144359.
10. McManus, J.F.; Francois, R.; Gherardi, J.M.; Keigwin, L.D.; Brown-Leger, S. Collapse and rapid resumption of Atlantic meridional circulation linked to deglacial climate changes. *Nature* 2004, 428, 834-837, doi:10.1038/nature02494.

11. Barker, S.; Diz, P.; Vautravers, M.J.; Pike, J.; Knorr, G.; Hall, I.R.; Broecker, W.S. Interhemispheric Atlantic seesaw response during the last deglaciation. *Nature* 2009, 457, 1097-1102, doi:10.1038/nature07770. 201  
202
12. Mandal, G.; Yu, J.-Y.; Lee, S.-Y. The Roles of Orbital and Meltwater Climate Forcings on the Southern Ocean Dynamics during the Last Deglaciation. *Sustainability* 2022, 14, doi:10.3390/su14052927. 203  
204
13. Anderson, R.F.; Ali, S.; Bradtmiller, L.I.; Nielsen, S.H.H.; Fleisher, M.Q.; Anderson, B.E.; Burckle, L.H. Wind-Driven Upwelling in the Southern Ocean and the Deglacial Rise in Atmospheric CO<sub>2</sub>. *Science* 2009, 323, 1443-1448, doi:10.1126/science.1167441. 205  
206
14. Fairbanks, R.G. A 17,000-year glacio-eustatic sea level record: influence of glacial melting rates on the Younger Dryas event and deep-ocean circulation. *Nature* 1989, 342, 637-642, doi:10.1038/342637a0. 207  
208
15. Stouffer, R.J.; Yin, J.; Gregory, J.M.; Dixon, K.W.; Spelman, M.J.; Hurlin, W.; Weaver, A.J.; Eby, M.; Flato, G.M.; Hasumi, H.; et al. Investigating the Causes of the Response of the Thermohaline Circulation to Past and Future Climate Changes. *Journal of Climate* 2006, 19, 1365-1387, doi:10.1175/jcli3689.1. 209  
210  
211

**Disclaimer/Publisher's Note:** The statements, opinions and data contained in all publications are solely those of the individual author(s) and contributor(s) and not of MDPI and/or the editor(s). MDPI and/or the editor(s) disclaim responsibility for any injury to people or property resulting from any ideas, methods, instructions or products referred to in the content. 212  
213  
214  
215