

Diverse Applications of Remote Sensing and GIS in Implementing Integrated Solid Waste Management: A Short Review [†]

Sakshi *, Krishna Neeti and Reena Singh

Research Scholar, Department of Civil Engineering, National Institute of Technology Patna, Patna 800005, Bihar, India; krishnan.phd19.ce@nitp.ac.in (K.N.); reena@nitp.ac.in (R.S.)

* Correspondence: sakshi.pg22.ce@nitp.ac.in; Tel.: +91-9006463991

[†] Presented at the 4th International Electronic Conference on Applied Sciences, 27 October–10 November 2023; Available online: <https://asec2023.sciforum.net/>.

Abstract: The ever-growing global population, combined with the industrial revolution and increased consumerism, has led to an exponential surge in waste generation. The implementation of integrated solid waste management (ISWM) is crucial for addressing the challenges posed by increasing waste generation and limited landfill space. Remote sensing (RS) and Geographic Information Systems (GIS) have emerged as powerful tools to support ISWM strategies through their diverse applications. This short review explores the novel applications of RS and GIS in ISWM and highlights their potential for enhancing waste management practices. RS techniques, such as satellite imagery and aerial photography, enable the accurate mapping and monitoring of waste generation, disposal sites, and recycling facilities. GIS facilitates spatial analysis and decision-making, allowing for optimized waste collection routes, landfill site selection, and the identification of suitable locations for waste-to-energy projects. Furthermore, RS and GIS provide valuable insights into waste composition analysis, landfill stability assessment, and environmental impact evaluation. This review underscores the importance of leveraging RS and GIS technologies to improve waste management practices and offers valuable recommendations for future research in this field.

Keywords: remote sensing; Geographic Information Systems (GIS); waste management; integrated solid waste collection; optimization

Citation: Sakshi; Neeti, K.; Singh, R. Diverse Applications of Remote Sensing and GIS in Implementing Integrated Solid Waste Management: A Short Review. *Eng. Proc.* **2023**, *52*, x. <https://doi.org/10.3390/xxxxx>

Academic Editor(s): Name

Published: date



Copyright: © 2023 by the authors. Submitted for possible open access publication under the terms and conditions of the Creative Commons Attribution (CC BY) license (<https://creativecommons.org/licenses/by/4.0/>).

1. Introduction

Due to the ever-growing population, rising urbanization, industrialization, and changing lifestyles, there is now more waste being produced than ever before [1]. According to recent data, there were 2.24 billion tons of solid waste produced in 2020, and by 2050, that number is expected to rise to 3.88 billion tons [2]. Solid waste is a useless solid material that is produced by human activity in household, industrial, or commercial settings. It is produced either as a byproduct of manufacturing processes or as a result of objects or materials being thrown away after use in the home or commercial sectors [3]. An essential part of urban services is waste management, which covers everything from waste collection at homes, streets, and markets to disposal at landfills [4]. The general goal of an ISWM system is to achieve environmental benefit, economic optimization, and social acceptability. In this method, waste streams, collection methods, treatment methods, and disposal methods are combined. ISWM is a sustainable alternative to SWM in that it focuses on resource usage efficiency by integrating the creation, segregation, transfer, sorting, treatment, recovery, and disposal of waste [1]. The planning of waste collection (segregated waste), reuse and recycling, storage, and transfer, transportation (primary/secondary), processing, and disposal all depend on the use of RS, GIS, and GPS [1]. The

geospatial technologies used for route optimization, the best route, choosing a dumping site, and gathering trash generation data are GIS, GPS, and RS. GIS is used to identify sites, optimize routes, choose bin locations, and estimate garbage generation. The activities that are available with GPS include vehicle tracking, route planning, driver tracking, and collection monitoring. RS is used to aid in environmental assessment and environmental feature monitoring. This study examines the innovative uses of RS and GIS in ISWM and illustrates how they have the potential to transform waste disposal procedures everywhere. Using GIS and RS technology in solid waste management procedures offers a promising route to efficiency and sustainability. In addition, helpful suggestions for more study in this area will be provided, promoting ongoing waste innovation and development of RS and GIS technologies in the waste management industry [3].

2. A Comprehensive Framework for ISWM

To effectively manage trash and protect both human and environmental health, a waste management framework known as ISWM combines waste prevention, recycling, recovery, and controlled and monitored disposal [5]. Sustainability in all of its dimensions, including environmental, social, and economic, is ISWM's primary objective. By promoting reuse and recycling of waste materials, environmental preservation, pollution reduction, and waste generation reduction are all accomplished [6]. It is also important to set targets for waste collection and adopt appropriate approaches when designing new waste management facilities in order to build a sustainable future that balances the needs of the present and safeguards resources for future generations [7].

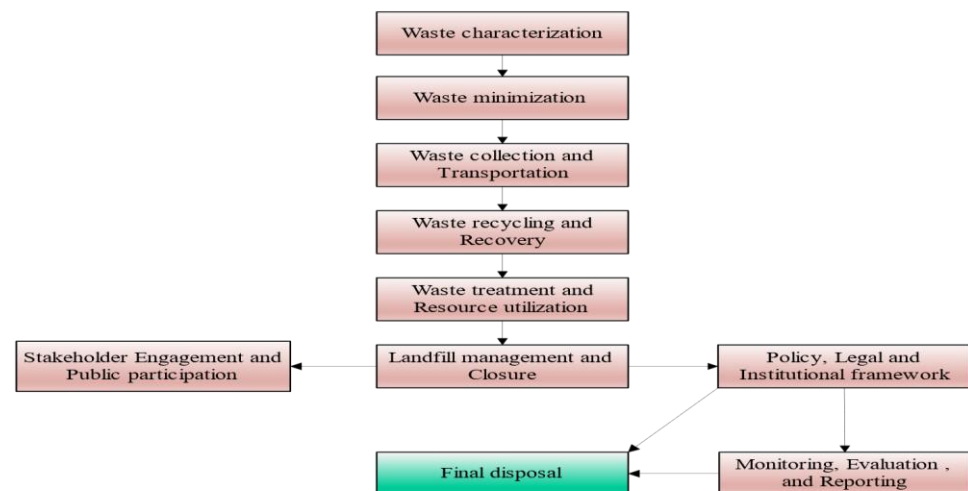


Figure 1. Flowchart Framework for ISWM.

3. Application of RS and GIS in ISWM

RS and GIS play diverse roles in implementing ISWM. RS techniques, like satellite imagery and aerial photography, enable accurate waste generation mapping, monitoring disposal sites, and recycling facilities [8]. GIS aids in optimizing waste collection routes, selecting landfill sites, and identifying locations for waste-to-energy projects. RS and GIS also provide valuable insights into waste composition analysis, landfill stability assessment, and environmental impact evaluation, enhancing overall waste management efficiency and sustainability [9]. The Tables 1 and 2 below highlights the applications of RS and GIS in ISWM.

Table 1. Applications of RS in ISWM [8,10,11].

RS Application	Uses	Data Sources	Technological Advancements	Cost-Benefit Analysis	Advantages	Challenges	Environmental Impact	Future Potential
Waste Generation Mapping	Municipal waste planning, Resource allocation for recycling programs	Satellite imagery, aerial photography	Enhanced spatial resolution, Real-time data acquisition	Improved waste management costs	-Enhanced resource allocation— Improved hotspot identification	- Data interpretation complexities— Seasonal variations in waste generation	Reduction in waste hotspots	Integration with Internet of Things (IoT) for real-time monitoring
Waste Disposal Site Monitoring	Landfill stability assessment, Detection of illegal dumping activities	Satellite imagery, aerial photography	Advanced spectral bands, Improved image classification algorithms	Enhanced cost-efficiency in landfill management	- Early risk detection— Environmental impact assessment	- Frequent data acquisition required— Weather-dependent observations	Reduced environmental risks	Enhanced integration with unmanned aerial vehicles (UAVs)
Recycling Facility Monitoring	Recycling facility performance assessment, Resource allocation for recycling	Satellite imagery, aerial photography	Hyper-spectral sensors, Enhanced object recognition techniques	Optimized resource allocation for recycling	- Enhanced recycling efficiency— Resource utilization assessment	- Facility accessibility challenges— Data accuracy and timeliness	Increased recycling rates	Real-time monitoring through advanced sensor networks
Waste Composition Analysis	Resource recovery program optimization, Reduction of waste sent to landfills	Hyperspectral imagery, multispectral data	AI-based spectral analysis, Enhanced data fusion techniques	Reduced waste in landfills	- Informed resource recovery strategies— Reduction of landfill waste	- Spectral data processing complexity— Limited spectral resolution	Enhanced recycling rates	Automated robotic sorting systems for recycling
Environmental Impact Evaluation	Environmental impact assessments, Policy development for sustainable waste management	Remote sensing data, environmental models	Enhanced machine learning algorithms, Integration with environmental sensors	Informed investment decisions for sustainable waste management	- Environmental policy support— Data-driven decision-making	- Data interpretation subjectivity— Temporal data limitations	Enhanced environmental sustainability	Real-time environmental impact monitoring for rapid response

Table 2. Applications of GIS in ISWM [1,8,12,13].

GIS Application	Examples of Use	Data Sources	Technological Advancements	Cost-Benefit Analysis	Advantages	Challenges	Environmental Impact	Future Potential
Waste Collection Route Optimization	Optimal waste collection route planning, Fleet management	Geographic data, traffic data	Real-time traffic data integration, Integration with mobile apps for route optimization	Lower operational costs	- Reduced operational costs—Improved route planning	- Data accuracy dependencies—Initial setup costs	Reduced vehicle emissions	Autonomous waste collection vehicles with AI-driven routing
Landfill Site Selection	Sustainable landfill site selection, Land use planning	Environmental data, socioeconomic data	Advanced environmental modelling, Stakeholder engagement platforms	Optimized land use and site selection	- Minimized environmental impact—Comprehensive site assessment	- Regulatory compliance challenges—Stakeholder engagement complexities	Reduced environmental footprint	AI-driven predictive modelling for site selection
Waste-to-Energy Project Identification	Site selection for waste-to-energy facilities, Energy resource optimization	Geographic data, energy infrastructure data	Integration with energy grid data, Enhanced energy generation modelling	Enhanced energy production and revenue	- Energy generation optimization—Landfill waste reduction	- Land use conflicts—Technological integration complexities	Reduced waste sent to landfills	Advanced waste-to-energy technologies for efficient resource recovery

3.1. RS Applications in ISWM

The use of RS techniques, such as satellite imagery and aerial photography, allows the accurate mapping and monitoring of waste generation and disposal sites, as well as the recycling of wastes. A number of critical aspects of ISWM are assisted by these technologies:

- **Waste Generation Mapping:** Maps based on satellite imagery and aerial photography enable planning and resource allocation by identifying hotspots and trends in waste generation.
- **Waste Disposal Site Monitoring:** Monitoring waste disposal sites using RS techniques permits detection of changes, assessment of potential environmental impacts, and assessment of landfill stability.
- **Recycling Facility Monitoring:** Recycling facilities are monitored and assessed with RS, allowing waste diversion efforts to be optimized.
- **Waste Composition Analysis:** Solid waste composition can be analyzed using RS data to guide resource recovery initiatives.
- **Environmental Impact Evaluation:** The RS performs environmental assessments of waste management practices in support of sustainable policy development and decision-making.

3.2. GIS Applications in ISWM

GIS complements RS by facilitating spatial analysis and decision-making in ISWM:

- **Waste Collection Route Optimization:** GIS-based spatial analysis can help improve waste management efficiency and reduce fuel consumption through the design of optimal waste collection routes.
- **Landfill Site Selection:** The use of GIS leads to the identification of appropriate landfill sites based on factors such as environmental, social, and economic factors.
- **Waste-to-Energy Project Identification:** In addition to maximizing energy recovery, GIS tools identify potential waste-to-energy sites and reduce landfill burden.

4. Overall Contribution of RS and GIS in ISWM

A wide range of aspects of ISWM can be enhanced with RS and GIS. Tables 1 and 2 show the substantial contributions that RS and GIS make to the ISWM framework when combined. The use of satellite imagery and aerial photography are two RS technologies that contribute significantly to waste management (Table 1). The data can be used for the purpose of mapping waste generation, detecting environmental risks early at disposal sites, optimizing recycling facility operations, and advising on resource recovery strategies. In addition, RS fosters data-driven decision-making for sustainable waste management practices through environmental impact assessments. RS is enhanced by GIS applications (Table 2), which provide spatial analysis capabilities that are critical to ISWM. GIS facilitates waste collection route optimization, leading to reduced operational costs and lower emissions. The selection of a sustainable landfill site optimizes land use and minimizes environmental impacts. Furthermore, GIS is vital for identifying suitable waste-to-energy sites, which can reduce landfill waste and increase energy generation. It is not only possible to optimize operations but also to benefit the environment through the integration of RS and GIS technologies. In addition to contributing to reduced environmental risks, improved recycling rates, and a reduction in waste sent to landfills, these technologies also improve the level of environmental sustainability. A low operating cost and informed investment decisions enable them to facilitate cost-effective waste management. In conclusion, the RS and GIS technologies, as shown in Tables 1 and 2, provide a comprehensive solution to the complex challenges posed by the growing number of waste generators and the limited amount of landfill space in the world. ISWM practices are significantly enhanced by their combined contributions in terms of efficiency, sustainability, and

environmental impact. ISWM will be shaped more environmentally friendly and cost-effectively in the future as these technologies continue to evolve and integrate.

5. Conclusions

GIS and RS have proven invaluable in advancing ISWM strategies. By using these technologies in a variety of ways, we have been able to overcome the challenges posed by growing waste production and limited landfill space. The use of RS techniques, such as satellite imagery and aerial photography, has enabled accurate mapping of waste generation and disposal sites, while GIS has enabled spatial analysis for waste collection route optimization, landfill site selection, and waste-to-energy projects. Additionally, RS and GIS have contributed to waste composition analysis, landfill stability assessment, and environmental impact evaluation. Waste management practices have been significantly enhanced through the combination of RS and GIS technologies. Due to the exponential growth of the world's population, these technologies offer valuable insights and recommendations for future waste management research, which makes them imperative to shaping the future of this field.

Author Contributions:

Funding: This research received no external funding.

Institutional Review Board Statement:

Informed Consent Statement:

Data Availability Statement:

Acknowledgments: The authors are grateful to the Department of Civil Engineering, National Institute of Technology Patna.

Conflicts of Interest: The authors declare no conflict of interest.

References

1. Gurjar, S.K.; Gaur, A. *Application of Remote Sensing and GIS in Integrated Solid Waste Management—A Short Review*; First Edit.; Elsevier Ltd.: Amsterdam, The Netherlands, 2022; ISBN 9780323857925.
2. Abdallah, M.; Abu Talib, M.; Feroz, S.; Nasir, Q.; Abdalla, H.; Mahfood, B. Artificial Intelligence Applications in Solid Waste Management: A Systematic Research Review. *Waste Manag.* **2020**, *109*, 231–246. <https://doi.org/10.1016/j.wasman.2020.04.057>.
3. Akram, S.V.; Singh, R.; Gehlot, A.; Rashid, M.; Alghamdi, A.S.; Alshamrani, S.S.; Prashar, D. Role of Wireless Aided Technologies in the Solid Waste Management: A Comprehensive Review. *Sustainability* **2021**, *13*, 13104. <https://doi.org/10.3390/su132313104>.
4. Shahab, S.; Anjum, M. Solid Waste Management Scenario in India and Illegal Dump Detection Using Deep Learning: An AI Approach towards the Sustainable Waste Management. *Sustainability* **2022**, *14*, 15896. <https://doi.org/10.3390/su142315896>.
5. Suryodiningrat, S.P.; Ramadhan, A. Integrated Solid Waste Management System Using Distributed System Architecture for Indonesia: An IT Blueprint. *Int. J. Adv. Sci. Eng. Inf. Technol.* **2023**, *13*, 1177. <https://doi.org/10.18517/ijaseit.13.3.17307>.
6. Umar, U.A.; Shafiq, N.; Ahmad, F.A. A Case Study on the Effective Implementation of the Reuse and Recycling of Construction & Demolition Waste Management Practices in Malaysia. *Ain Shams Eng. J.* **2021**, *12*, 283–291. <https://doi.org/10.1016/J.ASEJ.2020.07.005>.
7. Mautla, M.Z. Evaluating the Monitoring and Review of the Integrated Waste Management Plans (IWMPs) of the Drakenstein Local Municipality. Doctoral dissertation, North-West University, Potchefstroom, South Africa, 2022.
8. Asefa, E.M.; Barasa, K.B.; Mengistu, D.A.; Asefa, E.M.; Barasa, K.B.; Mengistu, D.A. Application of Geographic Information System in Solid Waste Management. In *Application of Geographic Information System in Solid Waste Management*; IntechOpen: London, UK, 2022. <https://doi.org/10.5772/INTECHOPEN.103773>.
9. Singh, A. Remote Sensing and GIS Applications for Municipal Waste Management. *J. Environ. Manag.* **2019**, *243*, 22–29. <https://doi.org/10.1016/J.JENVMAN.2019.05.017>.
10. Singhal, A.; Goel, S. An Integrated Solid Waste Management (ISWM) Plan Using Google Earth and Linear Programming: A Case Study of Kharagpur City, West Bengal. In *Treatment and Disposal of Solid and Hazardous Wastes*; Springer: Cham, Switzerland, 2022; pp. 159–183. https://doi.org/10.1007/978-3-030-29643-8_8/TABLES/7.
11. Dutta, D.; Goel, S. Applications of Remote Sensing and GIS in Solid Waste Management—A Review. *Adv. Solid Hazard. Waste Manag.* **2017**, 133–151. https://doi.org/10.1007/978-3-319-57076-1_7/COVER.

12. Sankar Cheela, V.R.; Dubey, B. Review of Application of Systems Engineering Approaches in Development of Integrated Solid Waste Management for a Smart City. *Water Resour. Environ. Eng. II* **2019**, 159–177. https://doi.org/10.1007/978-981-13-2038-5_16.
13. Sanjeevi, V.; Shahabudeen, P. Optimal Routing for Efficient Municipal Solid Waste Transportation by Using ArcGIS Application in Chennai, India. *Waste Manag. Res.* **2015**, 34, 11–21. <https://doi.org/10.1177/0734242X15607430>.

Disclaimer/Publisher's Note: The statements, opinions and data contained in all publications are solely those of the individual author(s) and contributor(s) and not of MDPI and/or the editor(s). MDPI and/or the editor(s) disclaim responsibility for any injury to people or property resulting from any ideas, methods, instructions or products referred to in the content.