

Proceeding Paper

# Long-Term Surface Water Variability in Chilika Lake Using Archival Remote Sensing Data <sup>†</sup>

Vivek Ganesh <sup>\*</sup>, Santonu Goswami and Harini Nagendra

Centre for Climate Change and Sustainability, Azim Premji University, Bengaluru 562125, India; santonu.goswami@apu.edu.in; harini.nagendra@apu.edu.in

<sup>\*</sup> Correspondence: vivek.g@apu.edu.in; Tel.: +91 9789007345

<sup>†</sup> Presented at the 5th International Electronic Conference on Remote Sensing, 7–21 November 2023; Available online: <https://ecrs2023.sciforum.net/>

**Abstract:** Asia's largest lake and the world's foremost tropical lagoon Chilika, stands as a testament to ecological diversity. The lake is diverse in biodiversity, a sanctuary for over 400 distinct brackish and freshwater species. However, lake confronts ceaseless pressures from a confluence of natural forces and anthropogenic activities. These challenges threaten to unleash ecological transformations that could reshape this ecological marvel. This study examines the spatial-temporal variation in the lake for the year 1988 to 2017 using archival remote sensing data. Normalized Difference Water Index (NDWI) derived from Landsat 5-TM and Landsat 8-OLI was used to understand the expansion and contraction happening in the extent of lake. To determine the water spread area, from each NDWI image; the (Min.) minimum pixel values, (Max.) maximum pixel values, and Mean pixel values were extracted and created a yearly composite for the aforementioned years.

**Keywords:** NDWI; Landsat; Surface water

## 1. Introduction

The amplification of human activities and the relentless progression of global climate change have precipitated substantial transformations in the Earth's surface water bodies. Surface water, being among the most indispensable strategic resources for human civilization and social advancement [1], stands as a linchpin resource susceptible to change. Alterations in surface water bodies carry profound ramifications, impacting ecosystems, agricultural production, and ecological well-being [2].

In this context, the utilization of remote sensing technology has emerged as a pivotal tool with versatile applications, encompassing land use/land cover change analysis [3], monitoring coastal ecosystems [4], tracking shifts in vegetation patterns, studying urban sprawl dynamics, and delving into hydrological processes. The significance of obtaining information regarding the spatial distribution of surface water is paramount across multiple scientific disciplines. This information underpins essential activities such as assessing current and future water sources, delineating flood-prone regions, examining river dynamics, conducting watershed analyses, and facilitating comprehensive environmental monitoring.

Remote sensing satellites, characterized by varying temporal, spectral, and spatial resolutions, offer invaluable capabilities for surface water detection and ecosystem change monitoring over the past three decades [5]. Among these satellites, Landsat data emerges as a stalwart, with the longest archive of cost-free data spanning four decades, making it an essential resource for ongoing monitoring of these transformative processes. In recent years, unique ways of image processing techniques were introduced for the extraction of surface water features from satellite imagery [6], some of them are like single band and multi-band techniques, classification of images and generation of water indices.

**Citation:** To be added by editorial staff during production.

Academic Editor: Firstname Last-name

Published: date



**Copyright:** © 2023 by the authors. Submitted for possible open access publication under the terms and conditions of the Creative Commons Attribution (CC BY) license (<https://creativecommons.org/licenses/by/4.0/>).

The Normalized Difference Water Index (NDWI) was developed for extracting water bodies from Landsat imagery [6]. NDWI demonstrates slightly superior performance compared to other water index algorithms [7]. It employs green and near-infrared (NIR) bands, assigning positive values to water bodies and negative values to non-water areas [8].

Chilika lake is the Asia's largest brackish water lagoon situated in east coast of Odisha, India [9] and close to the lake's banks, eight large towns and 122 villages thrive, with approximately 70% of the population dependent on fishing [10]. [11] Reveals that the oldest sediment in the lake dates back 13,500 years, as identified through pollen analysis. The shrinkage of the lake represents another significant ecological transformation, with the current annual shrinkage rate at approximately 14.7 km<sup>2</sup>, and a water spread area shrinkage rate is about 1.5 km<sup>2</sup> annually [12]. This study aims to understand the spatiotemporal variations in Chilika Lake over the period of 1988-2017 using archival remote sensing data. The analysis was performed on Landsat derived NDWI and extracted minimum, maximum, and mean pixel value from each NDWI image to estimate the area of water spread.

## 2. Material and Method

### 2.1. Study Area and Data Set

The lake is situated (85° 20'E, 19° 44'N) in the east coast state of Odisha, India (Figure 1). The dimensions of lake exhibit a variation, with its length ranging from 70.81 km to 63.4 km, and its width and depth fluctuating between 32.2 km to 20 km and 0.38 m to 4.2 m, respectively [13]. The lake is experiencing the influence of both the southwest and northeast monsoons during specific periods of the year. The southwest monsoon prevails from May to August, while the northeast monsoon occurs from November to December. The lagoon is geographically enclosed by the Bay of Bengal and maintains its connection to the sea through a few channels. The spectral bands selected for this study are given in Table 1. Figure 2 shows the workflow adopted to conduct this study.

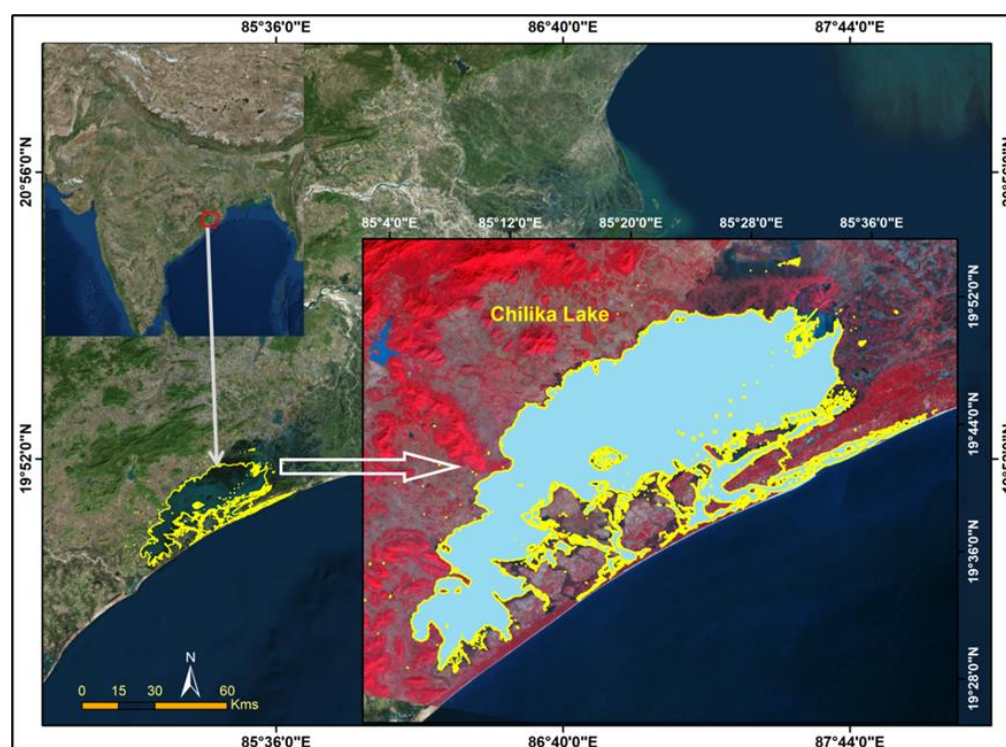
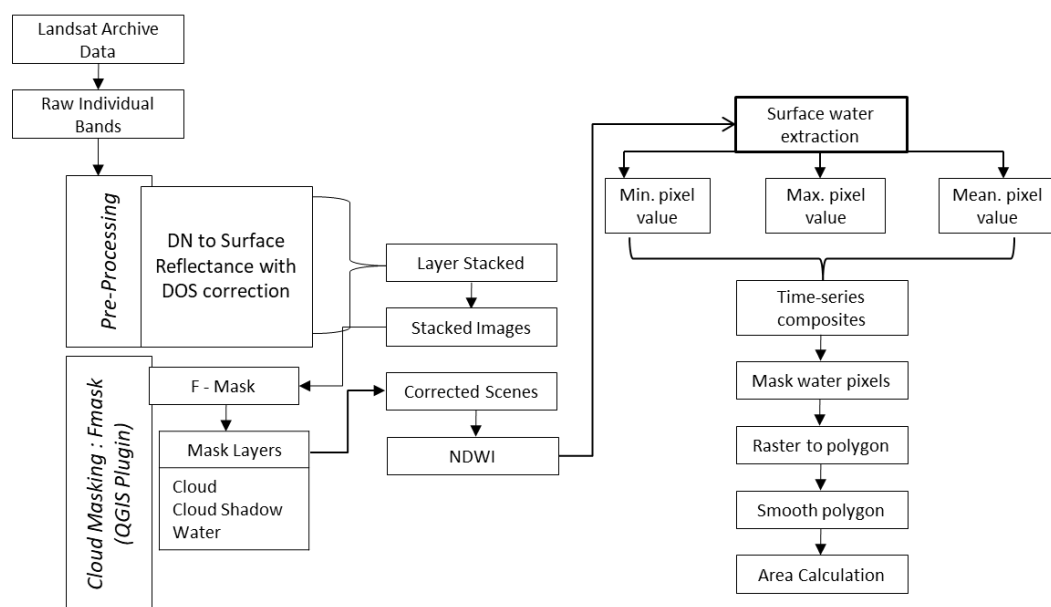


Figure 1. Map showing the location of study area.

**Table 1.** Band details of Landsat TM and OLI data.

Landsat 8 (OLI/TIRS)			Landsat 4-5 (TM)			
Bands	Wavelength(μm)	Res. (m)	Bands	Wavelength (μm)	Res. (m)	Path/Row
1-Ultra blue	0.435-0.451	30	1-Blue	0.45-0.52	30	140/46
2-Blue	0.452-0.512	30	2-Green	0.52-0.60	30	
3-Green	0.533-0.590	30	3-Red	0.63-0.69	30	
4-Red	0.636-0.673	30	4-NIR	0.76-0.90	30	
5-NIR	0.851-0.879	30	5-SWIR1	1.55-1.75	30	
6-SWIR1	1.566-1.651	30	6-Thermal	10.40-12.50	120*(30)	
7-SWIR2	2.107-2.294	30	7-SWIR2	2.08-2.35	30	

(NIR = Near Infrared; SWIR = Short-wave Infrared)



**Figure 2.** Workflow adopted for the analysis.

**2.2. Pre-Processing**

The pre-processing of archival data was performed in QGIS using an open-source tool called Semi-Automatic Classification plug-in [14]. It allows us to do pre-processing, post-processing, raster computations, supervised and unsupervised classifications on remote sensing data.

Individually processed data were stacked in layers for further processing. Landsat is an optical sensor, and the presence of clouds can have a significant impact on data quality. The cloud masking plugin (Fmask) [15] was applied to each stacked image. Fmask distinguishes between Potential Cloud Pixels (PCPs) and Clear Sky Pixels (CSPs) based on cloud physical features and removes all invalid data from the scenes. After pre-processing, Landsat derived Normalized Difference Water Index (NDWI) was generated to extract the surface water extent.

**2.3. Surface Water Extraction using NDWI**

To detect the spread of the water, the surface water index for each temporal image was created for the period 1988 – 2017. Using ‘Equation (5)’ the NDWI was calculated. The band specification of Landsat TM (green = band 2, NIR = band 4) and Landsat OLI (green = band 3, NIR = band 5).

$$NDWI = (Green - NIR) / (Green + NIR) \tag{5}$$

The minimum, maximum, and mean pixel values from each individual NDWI image were extracted for the period of 1988 to 2017 and built an annual composites for each year. To delineate water bodies accurately within the NDWI images, we utilized the raster calculator tool available in QGIS software. The NDWI ranges from 1 to -1, with positive values corresponding to water areas and negative values corresponding to land. Using the raster calculator's algorithm ( $A > 0$ , 'A' represent raster image), water pixels with positive values are masked. This formula effectively masked out pixels with positive NDWI values, creating a new water mask image with binary values: Low (0) for land and High (1) for water bodies. The subsequent step involved converting the water mask raster image into a vector format. This conversion was performed using the 'Raster to Vector' tool in QGIS software, with a specified field name, 'DN.' To isolate only the water areas of interest, we applied an expression ( $DN = 1$ ) within the attribute table of the vector image and selected the 'save only selected features' option when saving the vector layer.

The resulting polygon boundaries exhibited sharp edges, which required smoothing for a more accurate representation. To achieve this, we employed the 'smooth polygon' tool available in ArcGIS software. Given that our area of interest primarily centered on Chilika Lake, we undertook an additional step to exclude nearby water bodies by editing the polygon data. Subsequently, we calculated and analyzed the total surface water area for each annual composite image within the 1988-2017 timeframe.

### 3. Results and Discussion

#### 3.1. Surface Water Change Detection Using NDWI Technique

Here, we studied the temporal variations in lake surface area from 1988 to 2017. The dataset encompasses three key variables: minimum lake surface area, maximum lake surface area, and mean lake surface area.

##### 3.1.1. Minimum Lake Surface Area

There was a consistent trend in lake surface area expansion between 1988 and 1993, with yearly increases ranging from 30 km<sup>2</sup> to 504 km<sup>2</sup> (Table 2). This shows that causes such as increasing precipitation or other hydrological processes may have contributed to the lake's development during this time period. But, between 1998 and 2003, and 2003 to 2008, result shows a series of negative changes, indicating reductions in lake surface area. The largest decrease occurred between 2003 and 2008, with a decline of 383 km<sup>2</sup>. After 2008, the result indicates a period of relative stability in lake surface area, with smaller changes as compared to the preceding years. Figure 3 shows the variations in the extent of lake by taking minimum pixel value for the period 1988-2017.

**Table 2.** Change in lake surface area extracted from minimum pixel value method.

Year	Min. km <sup>2</sup>	Change in Lake surface area (km <sup>2</sup> )	
1988	282	30	161
1993	312		
1998	816	504	161
2003	761	-55	
2008	378	-383	161
2013	389	11	
2017	440	51	161

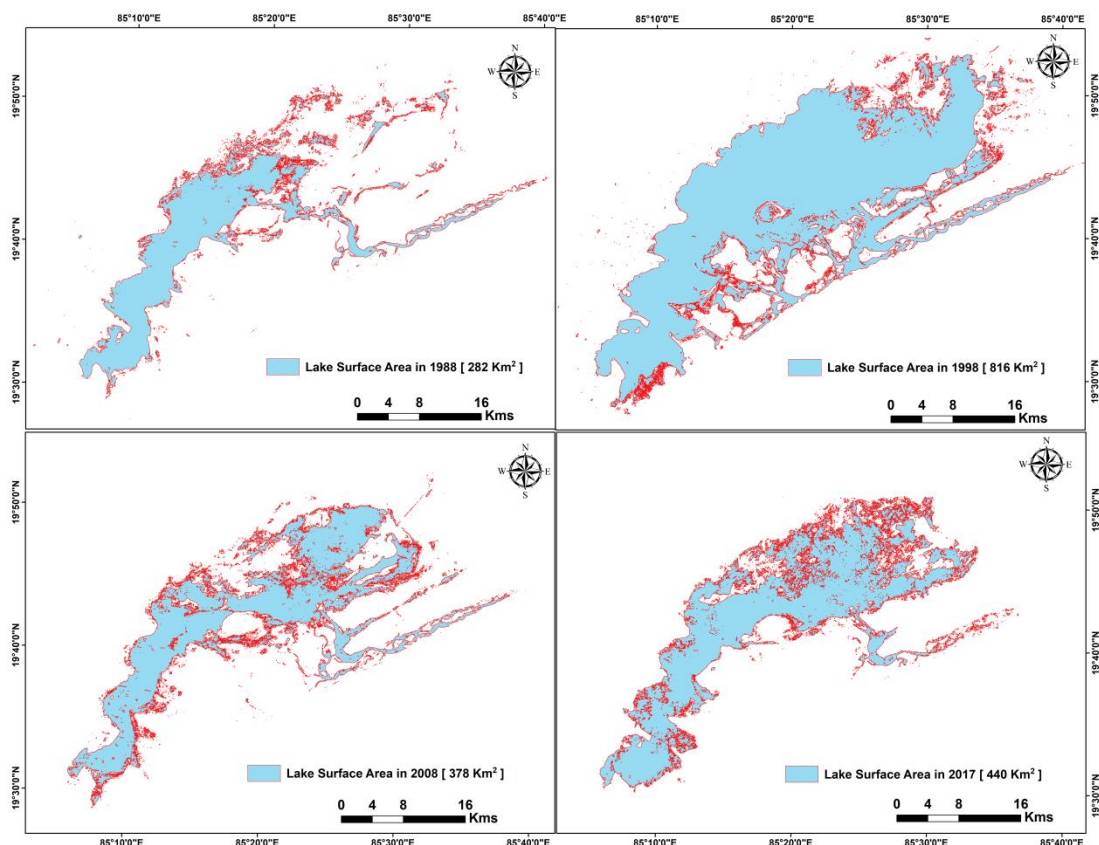


Figure 3. Chilika Lake surface area change maps using Min. method between 1988-2017.

### 3.1.2. Maximum Lake Surface Area

The result shows a mix of positive and negative changes in lake surface area over the years (Table 3). In 1993, there was a slight increase of 3 km<sup>2</sup> in lake surface area, while in 2003, there was an increase of 60 km<sup>2</sup>. The data also reveals years with negative changes, indicating a reduction in lake surface area. Notable periods of contraction occurred between 1993 and 1998, and again between 2008 and 2013 with a decrease of 67 km<sup>2</sup>. The most substantial reduction occurred between 1993 and 1998, with a decrease of 145 km<sup>2</sup>. After 2013, the result shows a relative stability in lake surface area, with positive changes. Figure 4 shows the variations in the extent of lake by taking maximum pixel value for the period 1988-2017.

Table 3. Change in lake surface area extracted from maximum pixel value method.

Year	Max. km <sup>2</sup>	Change in Lake surface area (km <sup>2</sup> )	
1988	959	3	-145
1993	962		
1998	817	60	27
2003	857		
2008	984	-67	40
2013	917		
2017	957		

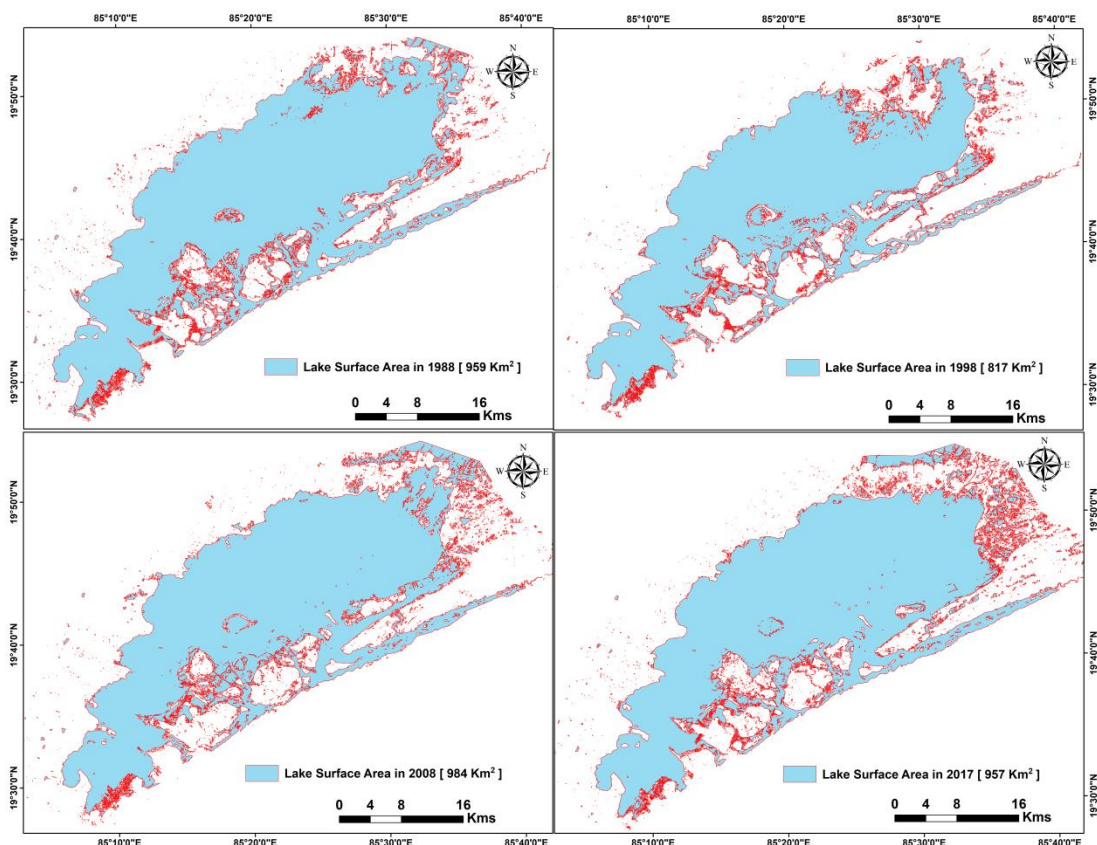


Figure 4. Chilika Lake surface area change maps using Max. method between 1988-2017.

### 3.1.3. Mean Lake Surface Area

Table 4 shows a notable increase of 15 km<sup>2</sup> in mean surface area from the year 1988 to 1993, followed by another increase of 137 km<sup>2</sup> in 1998. The result also reveals years with negative changes, indicating a reduction in mean lake surface area. Significant contractions occurred between 2003 and 2008 when there was a decrease of 122 km<sup>2</sup>. After 2008, there was a stability in the lake surface area with an increase of 58 km<sup>2</sup> in subsequent years. Figure 5 shows the variations in the extent of lake by taking mean pixel value for the period 1988-2017.

Table 4. Change in lake surface area extracted from mean pixel value method.

Year	Mean km <sup>2</sup>	Change in Lake surface area (km <sup>2</sup> )	
1988	665	15	103
1993	680		
1998	817	137	
2003	831	14	
2008	709	-122	
2013	767	58	
2017	768	1	

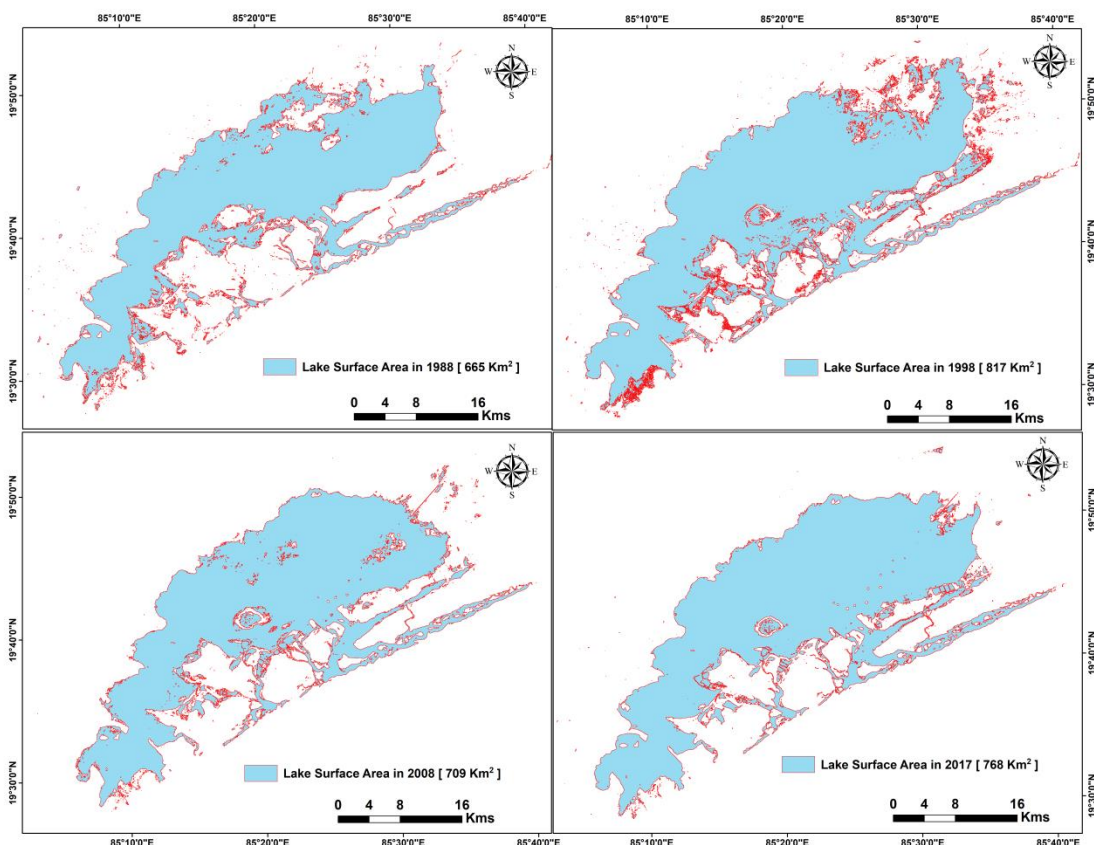


Figure 5. Chilika Lake surface area change maps using Mean method between 1988-2017.

#### 4. Discussion

The fluctuations in the lake surface area highlight the dynamic nature of the region's hydrological system. Factors such as groundwater inflow, outflow, and evaporation play a role in shaping the lake's size and can be influenced by climatic conditions. Understanding these statistics is crucial for assessing the ecological and environmental significance of the lake. Changes in the lake surface area can impact aquatic ecosystems, water quality, ease of access for fishing, and the availability of water resources for various uses, including agriculture and municipal supply. The surface area of a lake directly affects the amount of available fish habitat. A reduction in lake surface area due to factors like drought, excessive water extraction, or land reclamation can lead to a loss of critical fish habitats. This can result in lower fish populations and reduced catch for fishing communities.

Monitoring these trends over time is important for assessing the potential impacts of climate change on the region's hydrology. Shifts in precipitation patterns can have far-reaching consequences for water availability and ecosystem health. While it offers valuable insights, further research and comprehensive analysis are necessary to elucidate the complex relationships between these variables and their broader implications for the regional environment and water resource management.

#### 5. Conclusion

This study aimed to identify the spatiotemporal changes occurring on Chilika lake for the period of 1988-2017. The result shows a mix of positive and negative trends in the lake surface area for the above-mentioned period. An intense contraction in the lake was observed between 2003 and 2008 when the lake lost about 383 km<sup>2</sup> of its surface area. However, the dataset presented in this study underscores the dynamic nature of lake surface area and annual precipitation in the region over a 30-year period. To monitor the

changes in water bodies, Landsat satellite imagery provides appropriate temporal and spatial resolution data. The time-series analysis presented in this study will be continued with current Landsat data. For the future work, will utilize the time series data to examine how surface water dynamic and connectivity are affected by climate, water abstraction and land use change spatially and temporally.

**Author Contributions:** “Conceptualization, G.V. and S.G.; methodology, G.V.; software, G.V.; formal analysis, G.V.; writing—original draft preparation, G.V.; writing—review and editing, G.V. and S.G.; supervision, S.G. and H.N. All authors have read and agreed to the published version of the manuscript.

**Funding:** This research received no external funding.

**Institutional Review Board Statement:** Not applicable.

**Informed Consent Statement:** Not applicable.

**Data Availability Statement:** Not applicable.

**Acknowledgments:** ‘The content and opinions expressed are that of the author(s), and are not necessarily endorsed by/do not necessarily reflect the views of Azim Premji University.’

**Conflicts of Interest:** The authors declare no conflict of interest.

## References

1. Pekel, J. F.; Cottam, A.; Gorelick, N.; Belward, A. S. High-resolution mapping of global surface water and its long-term changes. *Nature* **2016**, *540*(7633), 418–422.
2. Hering, D.; Carvalho, L.; Argillier, C.; Beklioglu, M.; Borja, A.; Cardoso, A.C.; Duel, H.; Ferreira, T.; Globovnik, L.; Hanganu, J.; Hellsten, S. Managing aquatic ecosystems and water resources under multiple stress—An introduction to the MARS project. *Science of the total environment* **2015**, *503*, 10–21.
3. Mridha, N.; Chakraborty, D.; Roy, A.; Kharia, S. K. Role of Remote Sensing in Land Use and Land Cover Modelling.
4. Paringit, E. C.; Nadaoka, K. Synergistic methods in remote sensing data analysis for tropical coastal ecosystems monitoring. In *Proceedings of the XXth International Society for Photogrammetry and Remote Sensing Congress, on DVD (2003)*
5. Huang, C.; Chen, Y.; Zhang, S.; Wu, J. Detecting, extracting, and monitoring surface water from space using optical sensors: A review. *Reviews of Geophysics* **2018**, *56*(2), 333–360.
6. Rokni, K.; Ahmad, A.; Selamat, A.; Hazini, S. Water feature extraction and change detection using multitemporal Landsat imagery. *Remote sensing* **2014**, *6*(5), 4173–4189.
7. Chai, L.; Jiang, H.; Crow, W. T.; Liu, S.; Zhao, S.; Liu, J.; Yang, S. Estimating corn canopy water content from normalized difference water index (NDWI): An optimized NDWI-Based scheme and its feasibility for retrieving corn VWC. *IEEE Transactions on Geoscience and Remote Sensing* **2020**, *59*(10), 8168–8181.
8. Gao, B. Water Feature Mapping with Normalized Difference Water Index (NDWI). *Remote Sensing of Environment* **1996**, *58*(3), 257–266.
9. Sahu, B. K.; Pati, P.; Panigrahy, R. C. Environmental conditions of Chilika Lake during pre and post hydrological intervention: an overview. *Journal of Coastal Conservation* **2018**, *18*, 285–297.
10. Madhusmita, T. Biodiversity of Chilika and its conservation, Odisha, India. *Int. Res. J. Environment Sci.* **2012**, *1*(5), 54–57.
11. Khandelwal, A.; Mohanti, M.; García-Rodríguez, F.; Scharf, B. W. Vegetation history and sea level variations during the last 13,500 years inferred from a pollen record at Chilika Lake, Orissa, India. *Vegetation History and Archaeobotany*, **2008**, *17*, 335–344.
12. Kadekodi, G. K.; Nayampalli, A. Prospects of reversing biodiversity losses in Lake Chilika in India. *Pacific and Asian Journal of Energy*, **2003**, *13*(1), 37.
13. Mishra, S. P. *Geophysical changes of Chilika lagoon in post Naraj barrage period* (Doctoral dissertation, SIKSHA ‘O’ANUSANDHAN UNIVERSITY Bhubaneswar) **2015**.
14. Congedo, L. Semi-automatic classification plugin documentation. **2016**, *Release*, *4*(0.1), 29.
15. Zhu, Z.; Woodcock, C. E. Object-based cloud and cloud shadow detection in Landsat imagery. *Remote sensing of environment*, **2012**, *118*, 83–94.

**Disclaimer/Publisher’s Note:** The statements, opinions and data contained in all publications are solely those of the individual author(s) and contributor(s) and not of MDPI and/or the editor(s). MDPI and/or the editor(s) disclaim responsibility for any injury to people or property resulting from any ideas, methods, instructions or products referred to in the content.