

# Supplementary data

## Efficient Synthesis of Substituted 2-Nitrochalcone Derivatives†

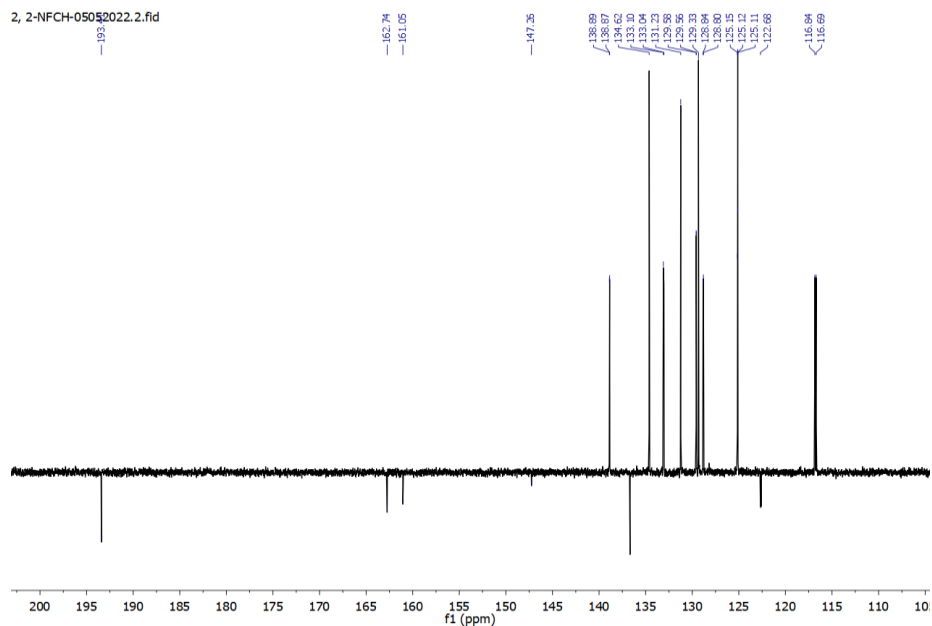
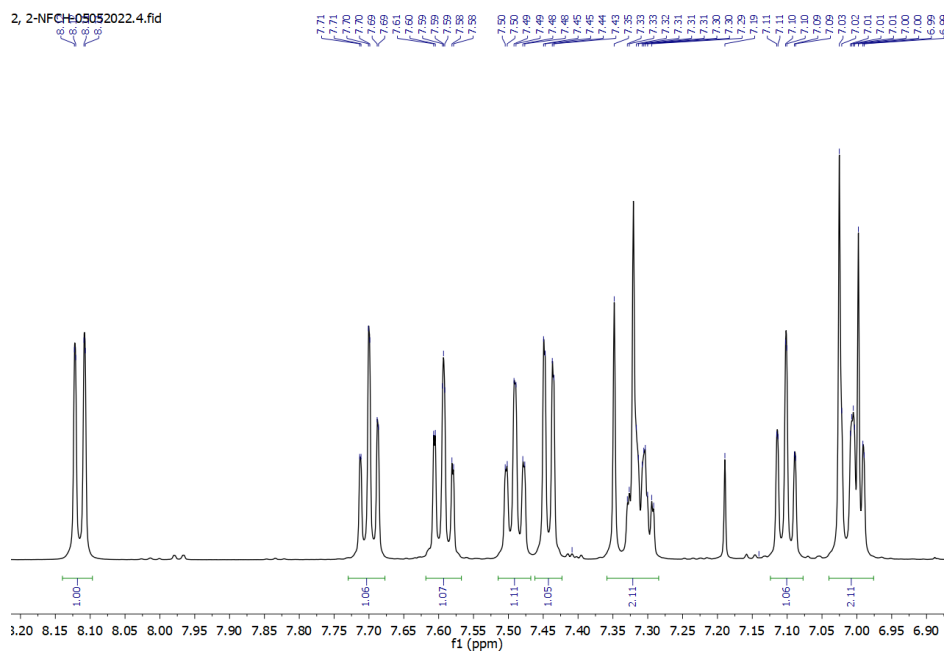
Alam Yair Hidalgo<sup>1,2</sup>, Quirino Torres-Sauret<sup>1</sup>, Carlos Ernesto Lobato-García<sup>1</sup>, Miguel Ángel Vilchis-Reyes<sup>1\*</sup>, Abraham Gómez-Rivera<sup>1</sup>, Oswaldo Hernández-Abreu<sup>1</sup>, Nancy Romero-Ceronio<sup>1\*</sup>.

<sup>a</sup>División Académica de Ciencias Básicas, Km 1 Carretera Cunduacán-Jalpa de M. Cunduacán, Tabasco 86690, México.

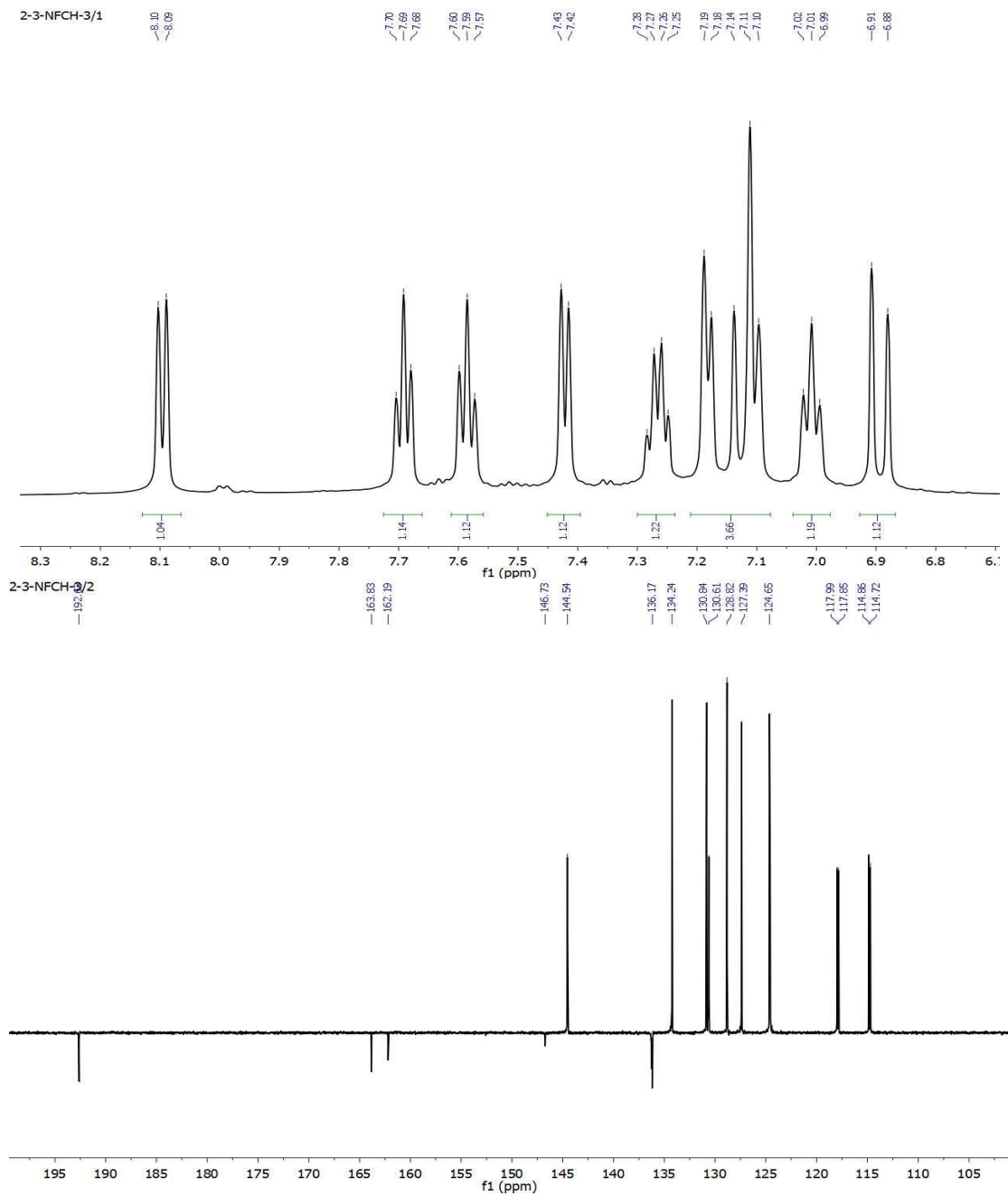
<sup>b</sup>División Académica de Ciencias de la Salud. Gregorio Méndez Magaña, Villahermosa 86150, México.

### 1. NMR spectra (<sup>1</sup>H and DEPTQ) of chalcones 3a-f.

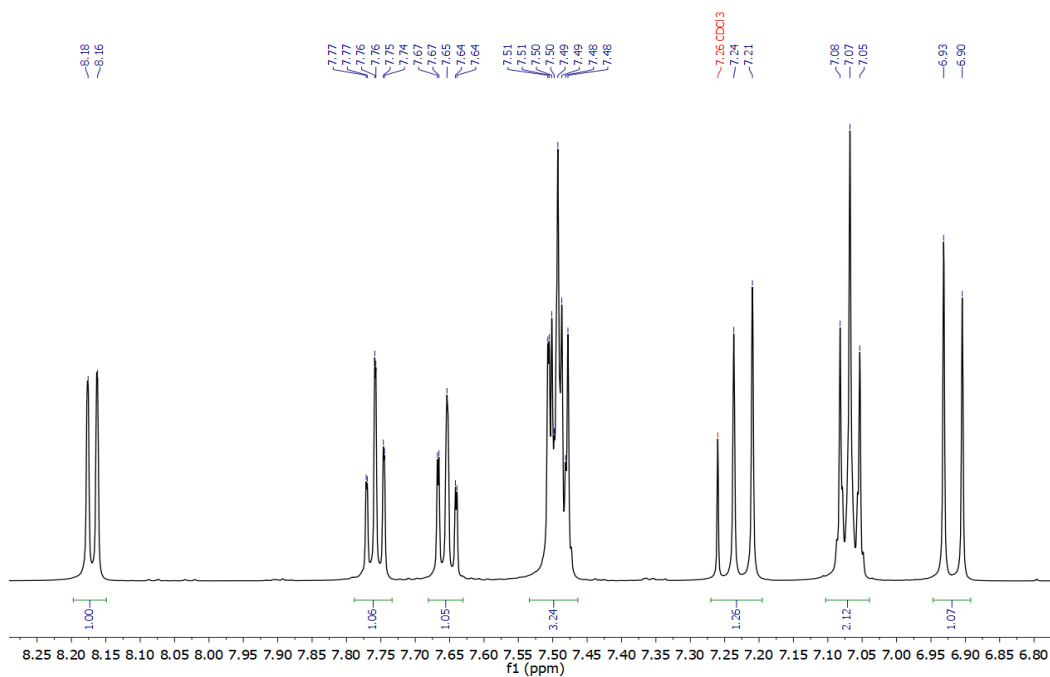
#### 1.1 (*E*)-3-(2-Fluorophenyl)-1-(2-nitrophenyl)prop-2-en-1-one (3a).



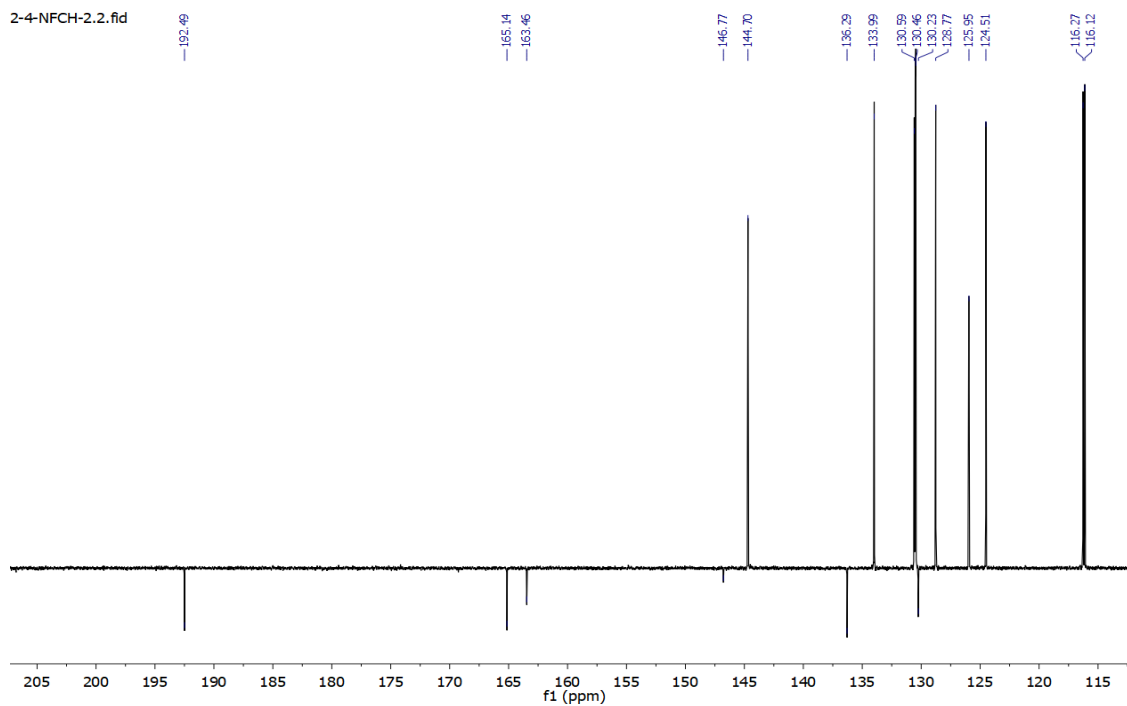
1.2 (*E*)-3-(3-Fluorophenyl)-1-(2-nitrophenyl)prop-2-en-1-one (**3b**).



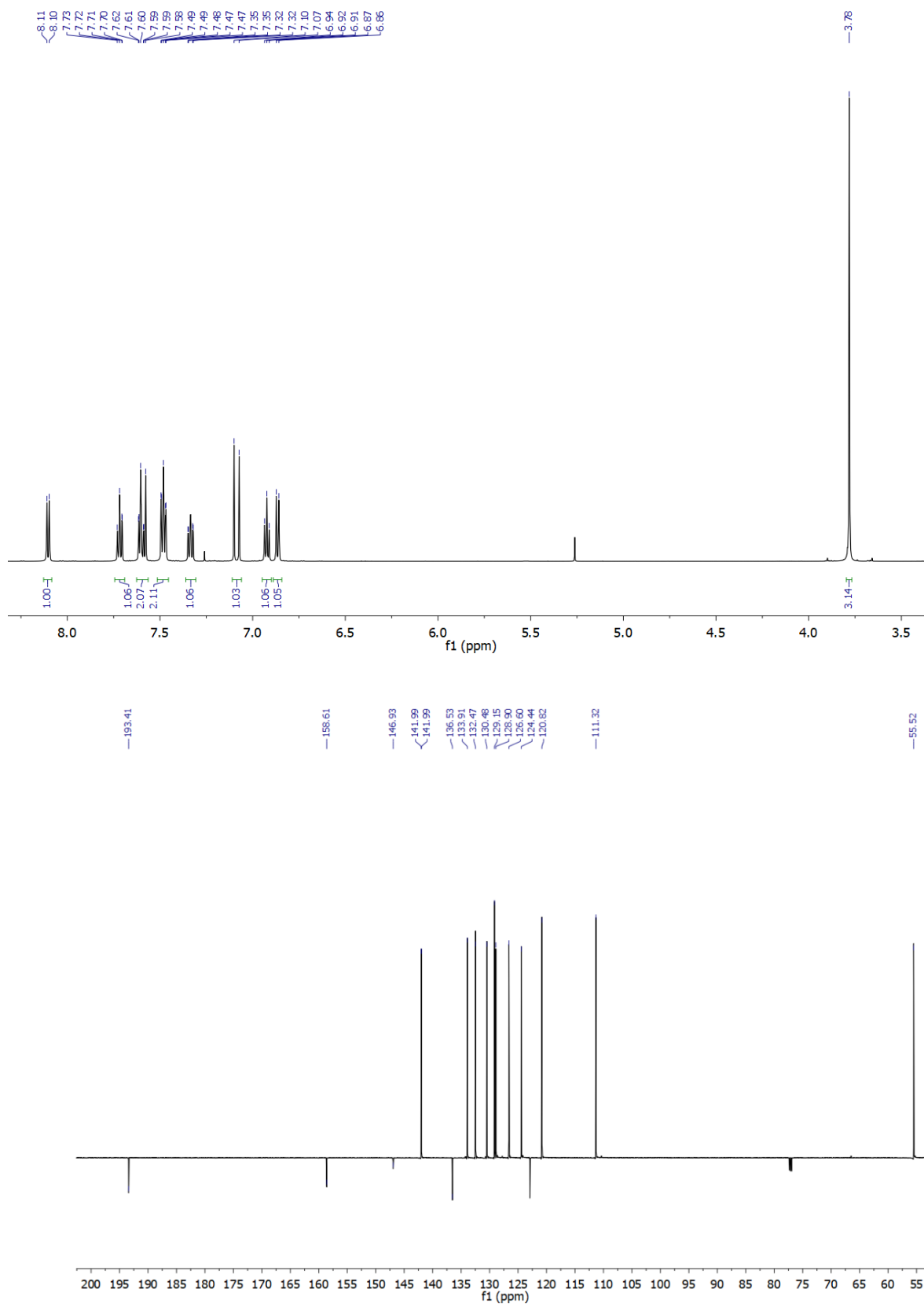
1.3 (*E*)-3-(4-Fluorophenyl)-1-(2-nitrophenyl)prop-2-en-1-one (**3c**).



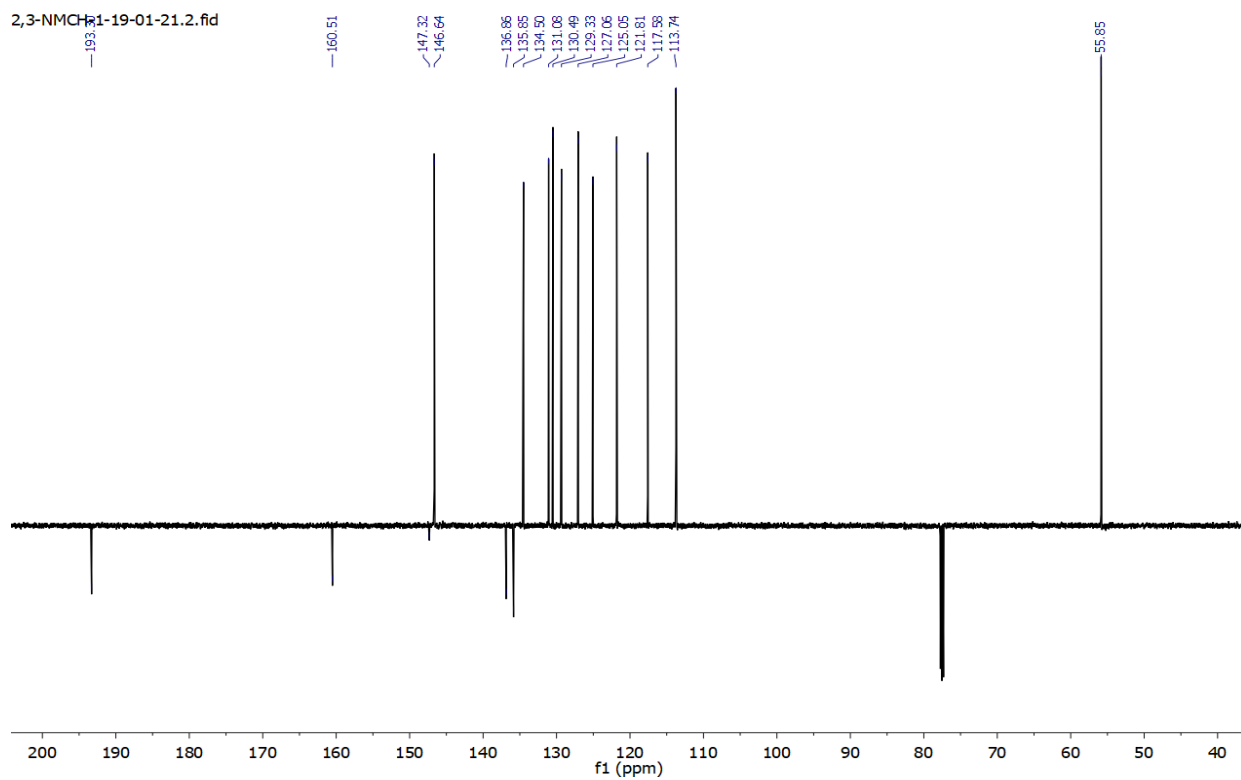
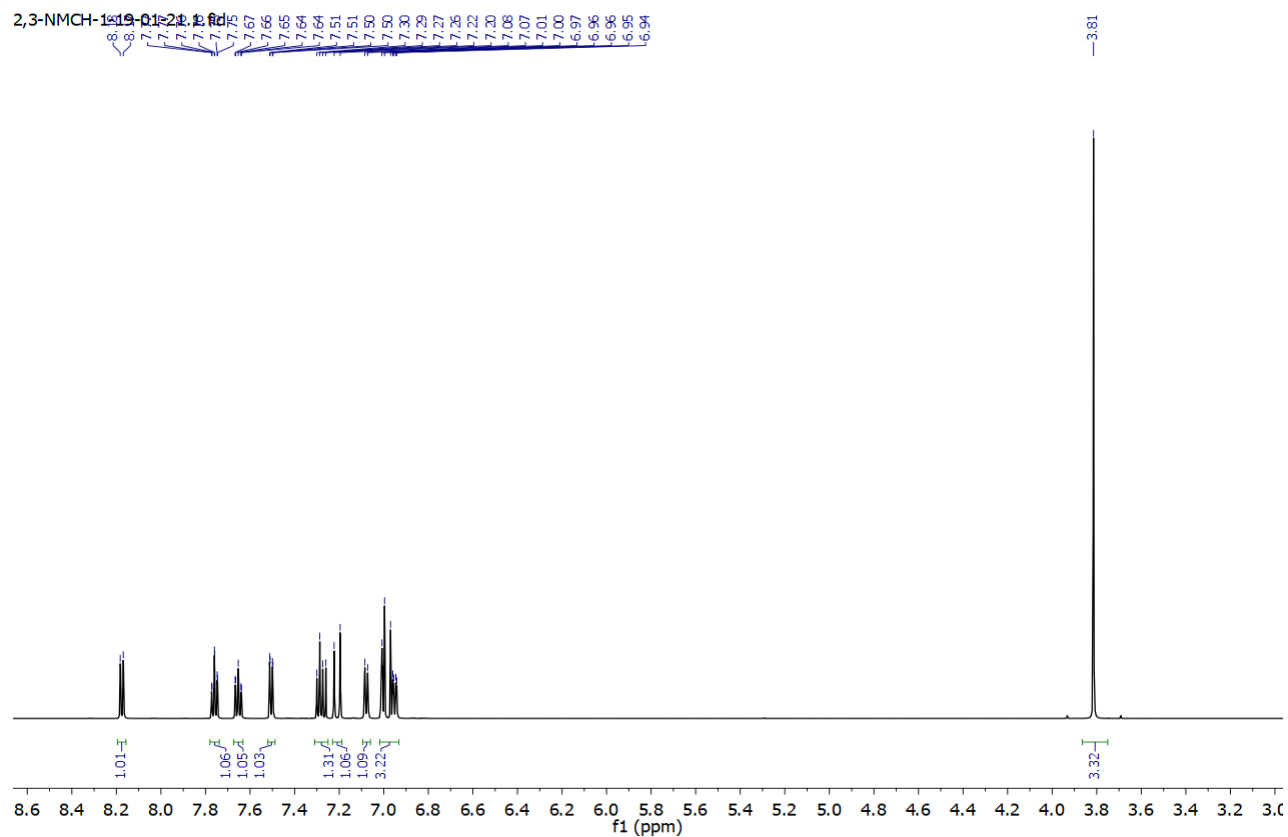
2-4-NFCH-2.2.fid



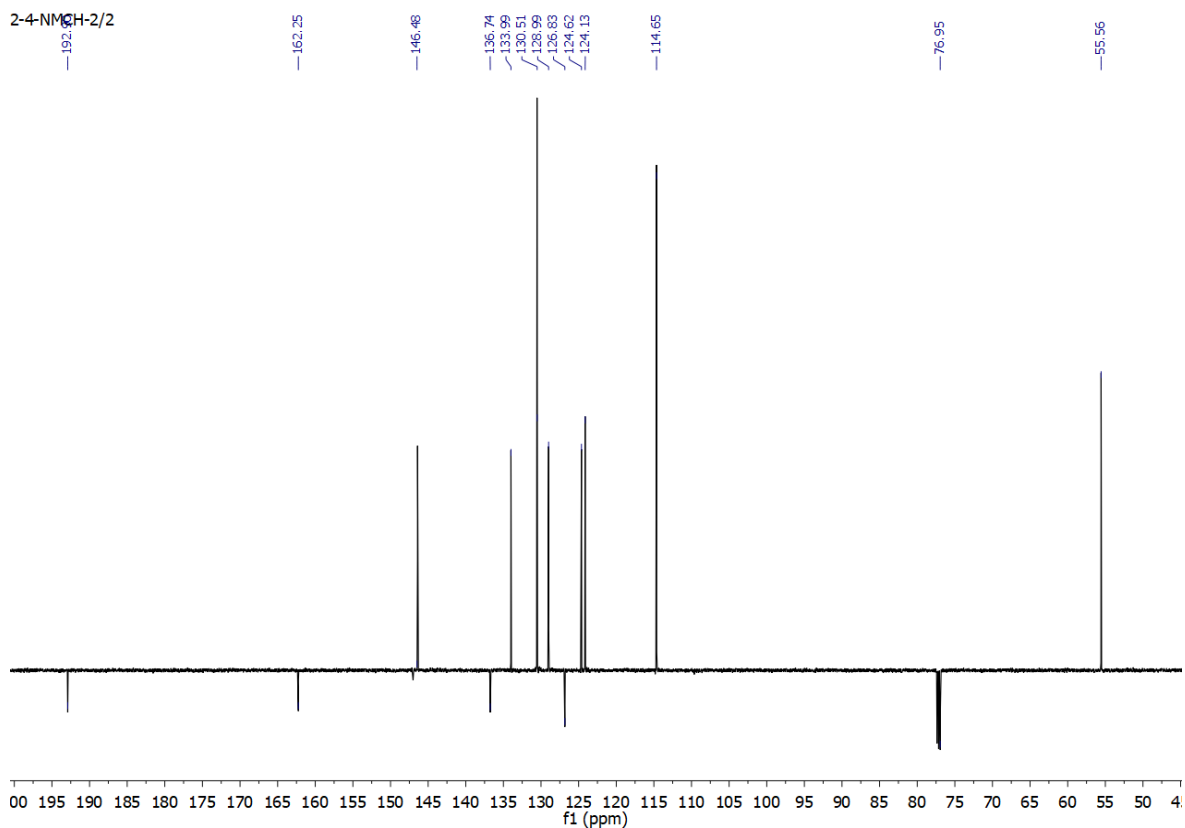
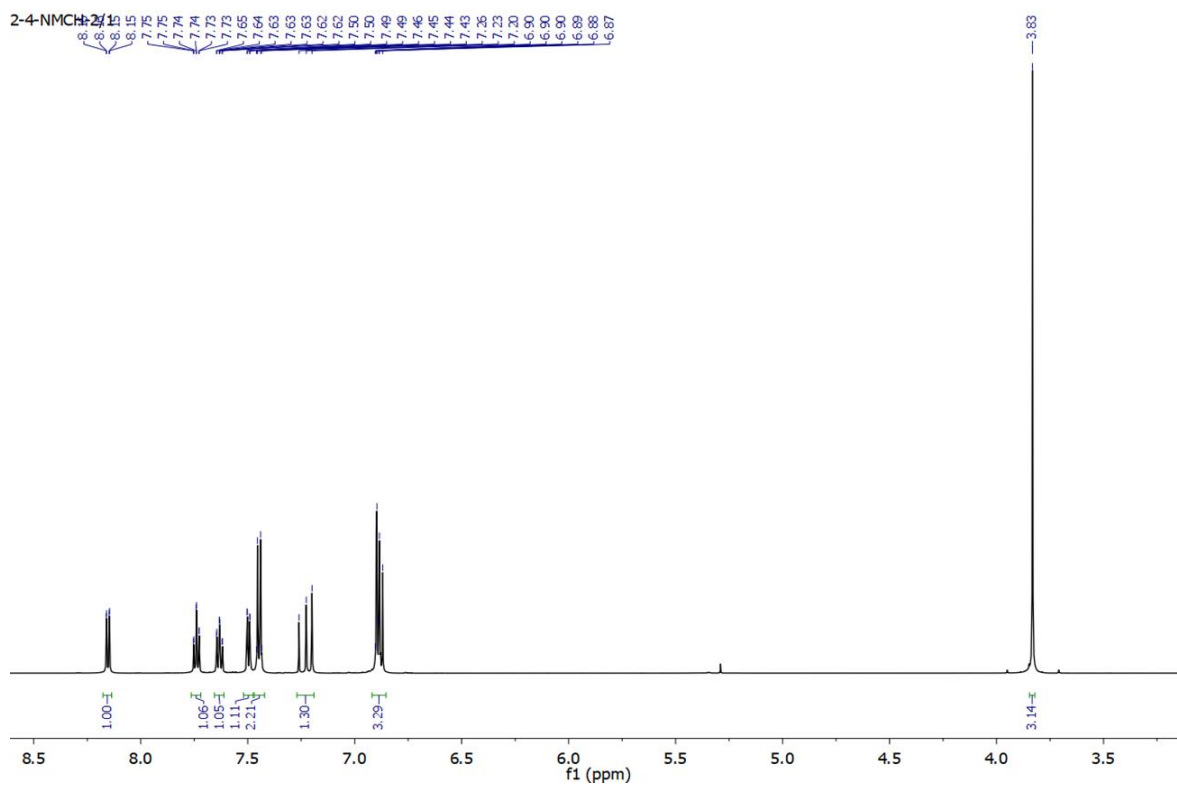
1.4 (*E*)-3-(2-Methoxyphenyl)-1-(2-nitrophenyl)prop-2-en-1-one (**3d**).



1.5 (*E*)-3-(3-Methoxyphenyl)-1-(2-nitrophenyl)prop-2-en-1-one (**3e**).

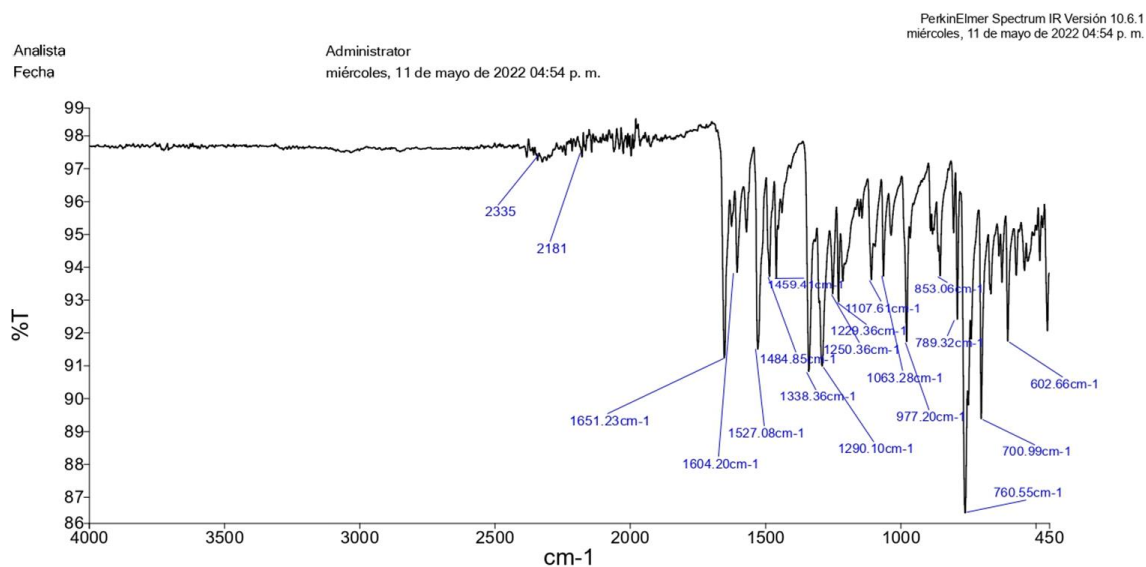


1.6 (*E*)-3-(4-Methoxyphenyl)-1-(2-nitrophenyl)prop-2-en-1-one (**3f**)

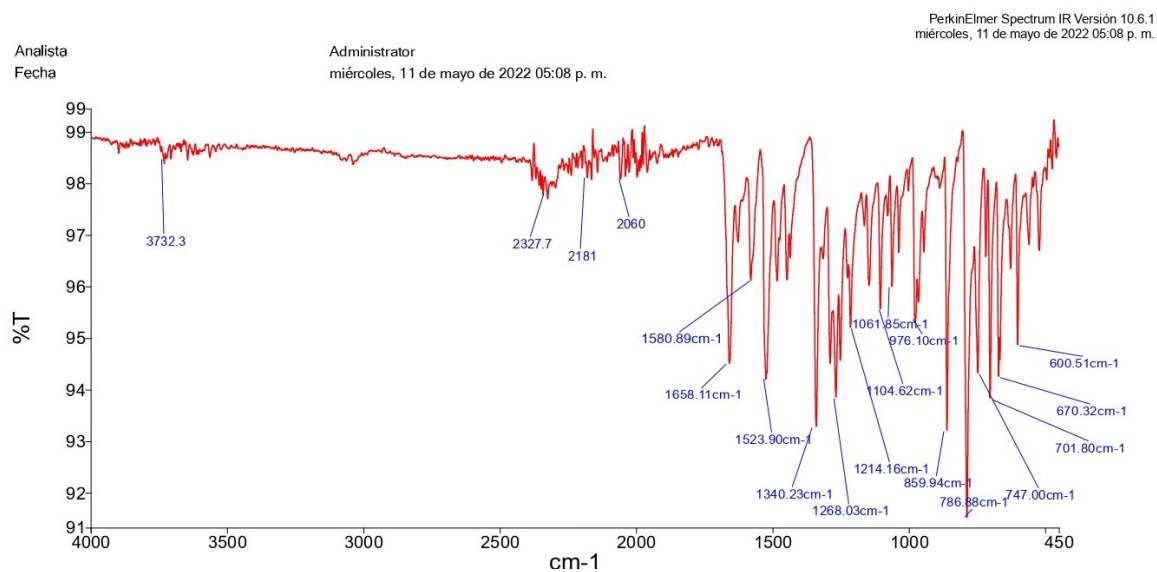


## 2. FT-IR of chalcones **3a-f**.

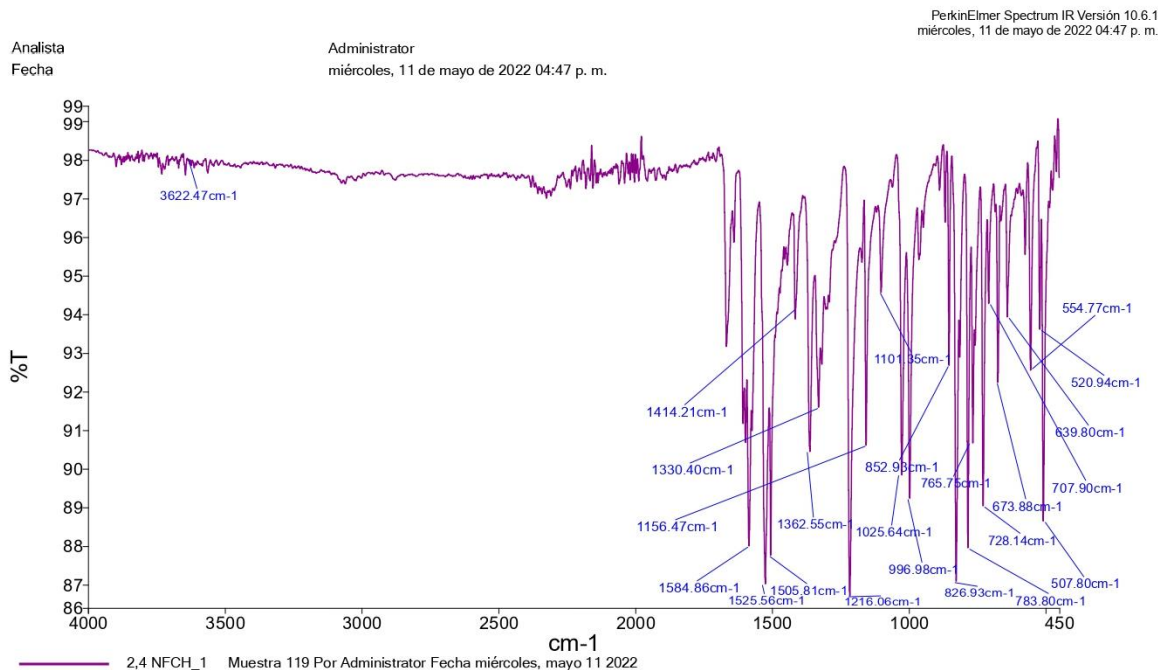
### 1.1 (*E*)-3-(2-Fluorophenyl)-1-(2-nitrophenyl)prop-2-en-1-one (**3a**).



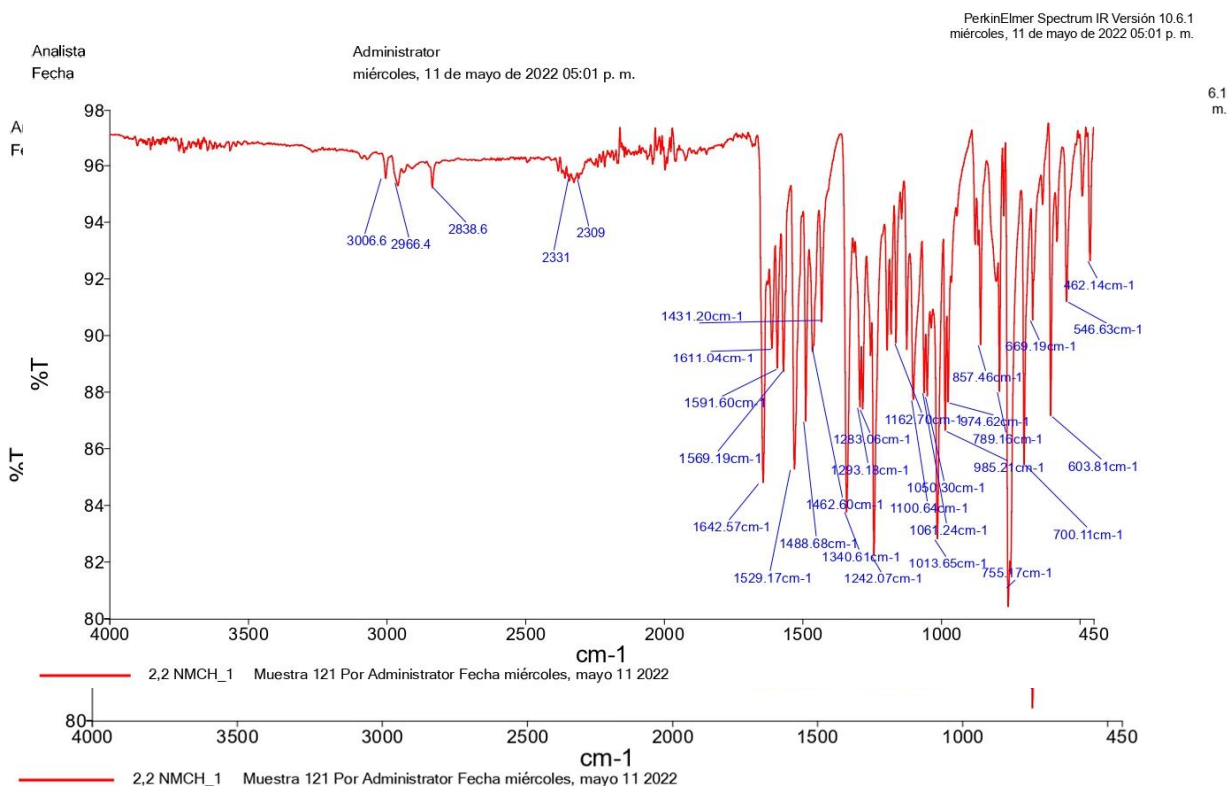
### 1.2 (*E*)-3-(3-Fluorophenyl)-1-(2-nitrophenyl)prop-2-en-1-one (**3b**).



1.3 (*E*)-3-(4-Fluorophenyl)-1-(2-nitrophenyl)prop-2-en-1-one (**3c**).



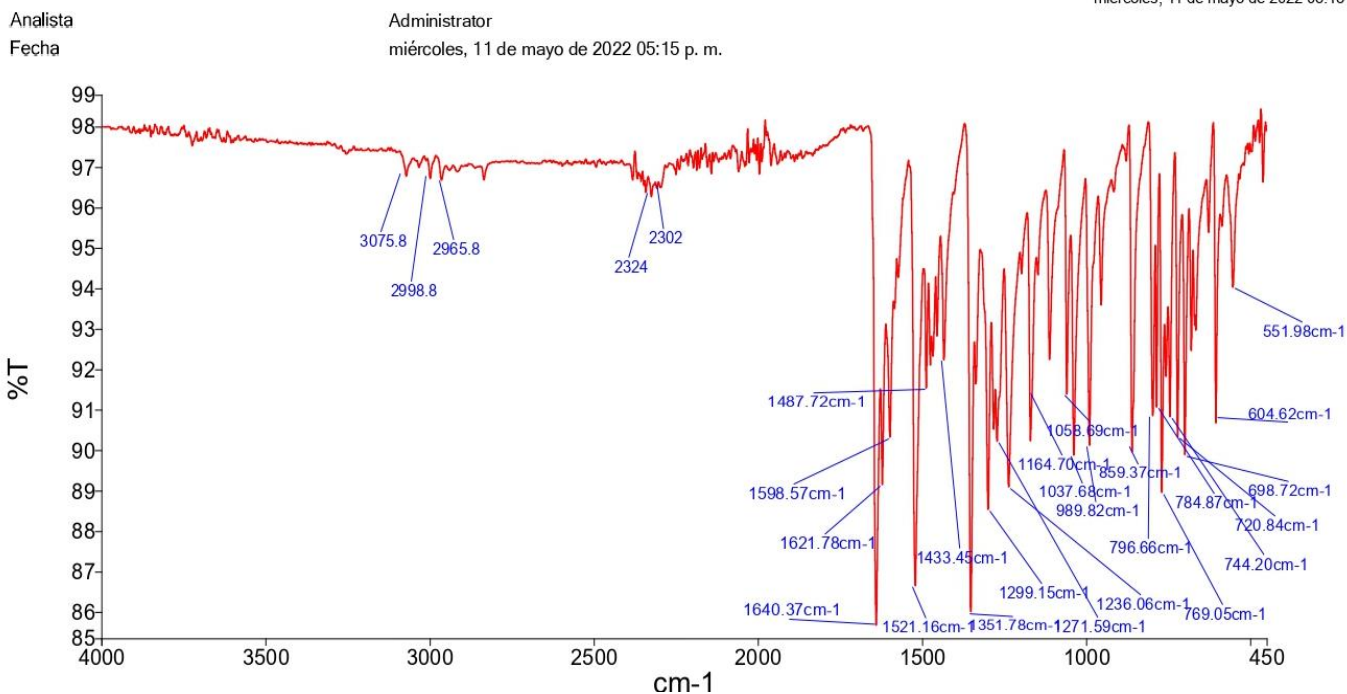
1.4 (*E*)-3-(2-Methoxyphenyl)-1-(2-nitrophenyl)prop-2-en-1-one (**3d**).





1.5 (*E*)-3-(3-Methoxyphenyl)-1-(2-nitrophenyl)prop-2-en-1-one (**3e**).

PerkinElmer Spectrum IR Versión 10.6.1  
miércoles, 11 de mayo de 2022 05:15 p. m.



1.6 (*E*)-3-(4-Methoxyphenyl)-1-(2-nitrophenyl)prop-2-en-1-one (**3f**)

PerkinElmer Spectrum IR Versión 10.6.1  
miércoles, 11 de mayo de 2022 04:38 p. m.

