

Proceeding Paper

A Case Study on Utilising Soy and Whey Protein Polymers: Advances in Enteric Coatings for Improved Delayed-Release Pharmaceuticals [†]

Enas Bshena ^{1,2}, Abdalrahem Shtawa ¹, Sarra Takita ^{3,4} and Magdi Mussa ^{3,5,*}

¹ Medical Research Center Zawia, Libyan Authority for Scientific Research, Zawia P.O. Box 80045, Libya; e.bshena@gmail.com (E.B.); abdalshtawa@gmail.com (A.S.)

² Huddersfield University, Queen's Gate, Huddersfield HD1 3DH, UK

³ Materials and Engineering Research Institute MERI, Sheffield Hallam University, Howard Street, Sheffield S1 1WB, UK; sarah.a.takita@gmail.com

⁴ Biomolecular Sciences Research Centre (BMRC), Sheffield Hallam University, Howard Street, Sheffield S1 1WB, UK

⁵ The Institute of Marine Engineering, Science and Technology, London, UK

* Correspondence: magdimosa1976@gmail.com; Tel.: +44-7404496955

[†] Presented at the 28th International Electronic Conference on Synthetic Organic Chemistry (ECSOC 2024), 15–30 November 2024; Available online: <https://sciforum.net/event/ecsoc-28>.

Abstract: Enteric coating plays a crucial role in preventing the disintegration of pharmaceutical dosage forms in the stomach. This is particularly important for drugs unstable at an acidic pH or designed to act in the small intestine. While conventional synthetic polymers have been widely used for enteric coatings, there is growing interest in exploring naturally derived proteins as an alternative. This study focused on two natural polymers: soya protein and whey protein isolates, first by determining the gastro-resistance properties of films prepared from these proteins. Then, appropriate casting solutions will be developed to create polymeric films, and their resistance to acidic pH will be evaluated using disintegration tests. Second, drug pellets coated with the most effective protein-based film were previously prepared, and their performance was assessed using the USP apparatus I (basket). The results demonstrated that the coated pellets (SA and SAG) exhibited excellent gastro-resistance properties. Specifically, the percentage release of the coated pellets met the USP criteria: less than 10% release in the first 2 h under acidic conditions, followed by at least 80% release within 45 min in the buffer phase. In contrast, uncoated pellets showed immediate release, with over 69% of the dye released during the initial 2 h. Notably, the SA and SAG-coated pellets demonstrated remarkable resistance to acidic pH, releasing only 1% and approximately 2% of the dye faster than uncoated pellets. These findings highlight the potential of SA and SAG coating films for efficient delayed release or enteric coating applications.

Keywords: biodegradable materials; blended protein; delayed-release; enteric coating; dissolution

Citation: Bshena, E.; Shtawa, A.; Takita, S.; Mussa, M. A Case Study on Utilising Soy and Whey Protein Polymers: Advances in Enteric Coatings for Improved Delayed-Release Pharmaceuticals. *Chem. Proc.* **2024**, *6*, x. <https://doi.org/10.3390/xxxxx>

Academic Editor(s): Name

Published: 15 November 2024



Copyright: © 2024 by the authors. Submitted for possible open access publication under the terms and conditions of the Creative Commons Attribution (CC BY) license (<https://creativecommons.org/licenses/by/4.0/>).

1. Introduction

An enteric coating is a barrier polymer applied on pharmaceutical oral dosage forms with gastric resistance properties (Maderuelo et al., 2019). The coatings prepared from such polymers remain intact in gastric fluid but disintegrate in the small intestine (Katona et al., 2022). An enteric phase indicates the small intestine; therefore, these coatings prevent the release content of solid pharmaceutical dosage forms (tablets, pellets, and granules) before they reach the small intestine. Several reasons exist for using such a coating on oral pharmaceutical formulations (Salawi, 2022). To protect the stomach from drugs that irritate the stomach, for example, aspirin and diclofenac. They are focusing on protecting the drugs from the stomach, which are unstable in an acidic environment. This

prevents drug release in the stomach but dissolves in the intestine. The polymers that are used for gastro-resistance applications are pH-sensitive polymers, which remain unionised at low pH~3.

For this reason, they do not dissolve in the stomach. In contrast, in the more neutral pH, 6.8–7 in the small intestine, the carboxylic group can become ionised, allowing the coating to dissolve; after that, the drug will be released (Bajpai et al., 2008). The gastrointestinal tract (GIT) has physiological factors that might affect the function of enteric coating. These factors, which are reported by (Heller, 1993; Maderuelo et al., 2019), are the following: The pH of the stomach and intestinal content, gastric emptying, and the enzyme activity of GIT. The gastric pH variable from 1 to 3.5 depends on the feeding status and reflux of intestinal content into the stomach, whereas the pH of the small intestine varies from about 3.8 to 6.8 to extend into 7.5–8 in–large intestine. According to these pH values, the enteric coating must be designed to avoid dissolution at pH values below 4 to resist disintegration in the stomach. Currently, the enteric substances that have been used are typically synthetic or semi-synthetic polymers. The term polymer can be defined as a large molecule with high molecular weight composed of many simpler molecules. These molecules are linked together to form a long chain. Furthermore, it can occur naturally or synthetically (Muley et al., 2016). For many years, polymers have been used for pharmaceutical applications, and recently, they have played a significant role in the fabrication of many delayed-release and drug-targeting site formulations. Before embarking on polymeric coating, one can identify the types of polymers and how they are made or prepared. Polymers are classified into three main categories. The first is natural polymers, which occur in nature and require purification processes; however, they do not need any chemical modification, such as shellac, alginate, pectin, and chitosan. The second category is known as semi-synthetic polymers. This kind of polymer is derived from natural materials and requires chemical modification. The cellulose derivatives are one example of such polymers.

In contrast, the third category is synthetic polymers, fully chemically synthesised, such as methacrylic acid copolymers (Siepmann et al., 2019); polymers have a long history in pharmaceutical practice. The first enteric coating of natural origin, shellac, was introduced by Nun in 1884. However, the application of shellac as an enteric coating has been limited due to its poor water solubility (Farag & Leopold, 2011). Therefore, this type of polymer was not reliable to use as an enteric coating.

Whey-isolated protein (WIP) is another biodegradable protein used for therapeutic purposes. In the current project, two of the natural polymers (soya-isolated protein and whey isolate protein) can be used as an enteric coating for pharmaceutical dosage forms. Although these natural coating systems have already been applied to delayed release, there is no well-known literature about their performance under gastric conditions or to compare it with other studies. (Davoodi et al., 2016) Whey proteins, along with casein, are one of the main clusters of proteins in milk.

2. Experimental Procedure

Film Preparation: Films were cast from soy protein isolate (SPI) and whey protein isolate (WPI) using organic solvents such as HCl, ethanol, acetic acid, and isopropanol. These films were evaluated for their resistance to acidic pH through disintegration tests and examined using scanning electron microscopy (SEM).

Pellets Preparation, the method was adopted by (Sinha, Agrawal, & Kumria, 2005). The powders contain three recipients (15 g of Avicel® PH 101, 5 g of lactose and 40 mg of red pigment. These ingredients were all mixed in dry form through a Caleva mixer. The pellets produced by the spherometer-extruder are. These pellets are coloured by adding a red pigment. There are two reasons for adding red pigment instead of adding medicine. The first was to detect the total amount of red colour through the wavelength absorbed by the solution. Therefore, only the photons travelling at 514 nm are reflected or absorbed

back into the spectrum. Second, when determining the pigment amount that is released in the solution, it will be easy to evaluate the performance of the coating films.

Coating procedure: This was done using spray coating equipment (Caleva Multi lab, UK). Three grams of pellets were coated with SAG solution, and the same amount of pellets were coated with SA solution. The dried pellets were loaded in a vibrating coating chamber. The coating solutions were sprayed on the pellets. After coating, the pellets were oven-dried at 60 °C for 1 h. The coating process was done separately; the resulting pellets are shown in Figure 1.

Percentages of red pigment inside the uncoated and coated pellets were used to calculate the percentage of pigment released from the pellets because the experimental amounts were more accurate than theoretical amounts. These amounts and percentages are shown in Table 1.

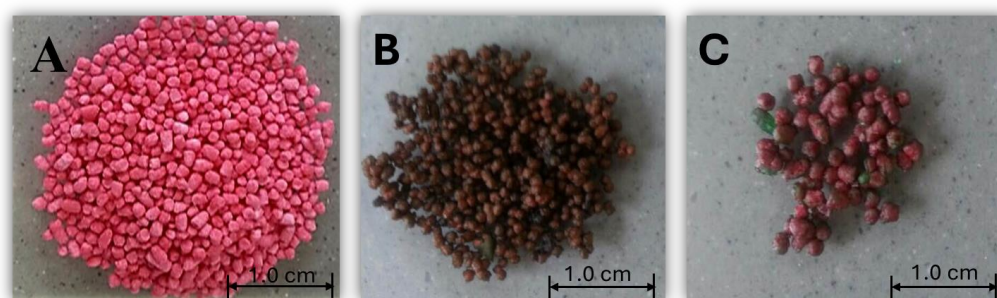


Figure 1. Shows (A) uncoated fresh pellets, (B) SA coated pellets, (C) SAG coated pellets.

Differential Scanning Calorimetry (DSC): The thermal properties of the films were analysed using DSC. The films were heated from 25 °C to 250 °C at 10 °C/min under a nitrogen atmosphere to prevent mass loss.

Disintegration Test: Films were tested for gastro-resistance by placing them in 0.1 M HCl (pH 1.2) for 2 h, followed by exposure to a phosphate buffer (pH 6.8) for 45 min. This test was conducted in a shaking water bath to simulate gastrointestinal conditions.

Dissolution Testing: In vitro dissolution studies were conducted using a USP dissolution apparatus, as shown in Figure 2. The coated pellets were tested in 0.1 M hydrochloric acid (pH 1.2) for 2 h, followed by a phosphate buffer solution (pH 6.8) for 45 min. The release rates were measured to evaluate the gastro-resistance properties of the coatings.

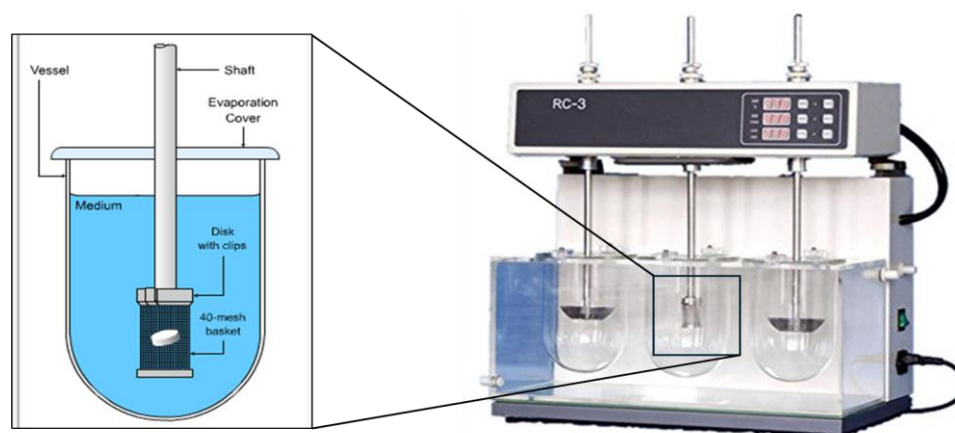


Figure 2. shows schematic of the USP dissolution apparatus used for Dissolution Testing.

Table 1. illustrates the Theoretical and Experimental amounts and percentages of pigment in coated and uncoated pellets.

	Amount and Percentage of Red Pigment		
	Uncoated Pellets	SAG Coated Pellets	SA Coated Pellets
Theoretical amount (mg)	1.13 mg	0.64 mg	0.54 mg
Theoretical percentage %	0.23%	0.13%	0.11%
Experimental amount (mg)	1.10 mg	0.97 mg	0.55 mg
Experimental percentage %	0.22%	0.19%	0.11%

3. Results and Discussion

Physical Characteristics of SPI and WPI Films; films (ST1 and ST2) prepared in present aqueous ethanol have a non-free-standing film despite plasticisers (Tec). This is possible because the ethanol is not compatible with SPI. However, water at 100% and HCl (0.1 M or 0.2 M) as a solvent produced a complete and non-cracked film, for example (SA1, SA2 and SA3) as shown in Figure 2. WPI films produced gel when adding 0.2 M HCl to the WPI/Ethanol solution. This might be due to changes in pH and the heating effect. All films dissolved in the acid phase, meaning these films do not have acid resistance properties and are very sensitive to acidic.

The study evaluated the physical characteristics of whey protein isolate (WPI) and soy protein isolate (SPI) films, focusing on their solvent compatibility, plasticiser use, and thermal treatment. Thermal treatment of SPI is a well-established method to enhance its solubility by denaturing the protein, which involves breaking disulfide bonds. This process improves the functional properties of SPI, making it more suitable for coating applications.

Protein Denaturation and Solubility; Denaturation of proteins, such as SPI, occurs when their native structure is altered without changing the amino acid sequence, typically due to exposure to different pH levels or temperatures. Heating soy protein can segregate subunits into more minor molecular weight compounds, which may enhance protein solubility.

For Hydrolysis and Molecular Breakdown, the degree of protein hydrolysis increases with temperature, accelerating the breakdown of protein molecules in SPI films. This reaction is crucial for improving the film's characteristics, potentially making it more effective as a coating material.

Enteric Coating Development: A slight dissolution occurred for 120 min (acid phase) for both coated pellets (SA and SAG). The dye percentage release was only 1% for coated pellets (SA) and approximately 2% for coated pellets (SAG). However, when adding phosphate buffer pH 6.8 after 5–10 min, the percentage release was increased significantly by over 34% and roughly 24% for SA and SAG-coated pellets, respectively. Furthermore, the percentage releases reached 95% (SA) and 90% (SAG) within 180 min following the buffer phase.

The coated pellets illustrated excellent physical resistance to the acid phase with the acid uptake value between 1–2% in the first two hours, followed by modifying to basic by adding phosphate buffer pH 6.8 to cause rapid dissolution of a coating film. As shown in Figure 3. the coated pellets SAG dissolved faster than the coated pellets SA. This is probably because the coating film contains glycerol, which leads to this effect. However, the dissolving rate for pellets coated by SA is much greater than that of coated pellets by SAG during the whole buffer phase pH 6.8.

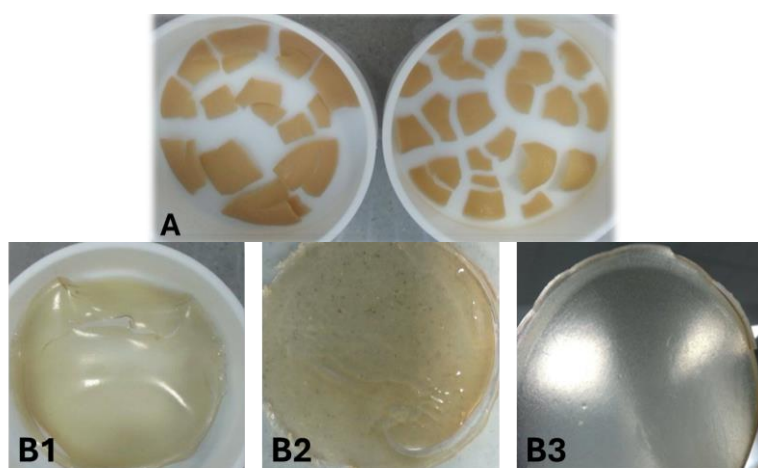


Figure 3. Shows (A) both ST1 and ST2 films. (B1) SA1 film. (B2) SA2 film. (B3) SA3 film.

The development of enteric coatings using natural polymers like soy protein shows promise. The two-coating films from SPI demonstrated gastrointestinal resistance, remaining intact for 2 h in acidic pH and releasing the dye under intestinal conditions at pH 6.8. This indicates the potential of SPI films for delayed-release applications. SEM images illustrate the surface morphology of pellets before and after the dissolution test. It is clear from Figure 4 that pellets coated by SAG have ruptured more than SA pellets. The disintegration of the coating film for the pellets coated by SA was not complete. According to USP criteria, for a successful enteric coating, the percentage release should be less than 10% in the first 2 h in the acidic phase, followed by at least 80% of the percentage release within 45 min in the buffer phase. The coating films met the USP-specific limit for enteric coating films at 45 min. The percentage of dye release was $78.534\% \pm DS$. After 5 min, the rate has increased to 82%. This percentage is considered a significant value.

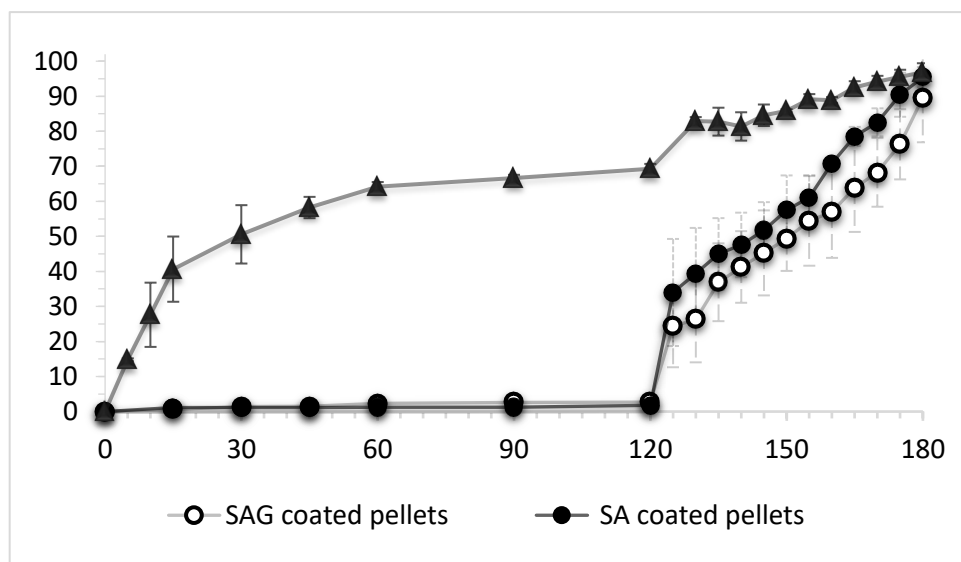


Figure 4. Comparison of % dye release profiles for uncoated and coated pellets (SA and SAG) in 0.1 M HCl pH (1.2) for 2 h, followed by adding phosphate buffer pH 6.8 for 1 h. The data are expressed as the average of three trials.

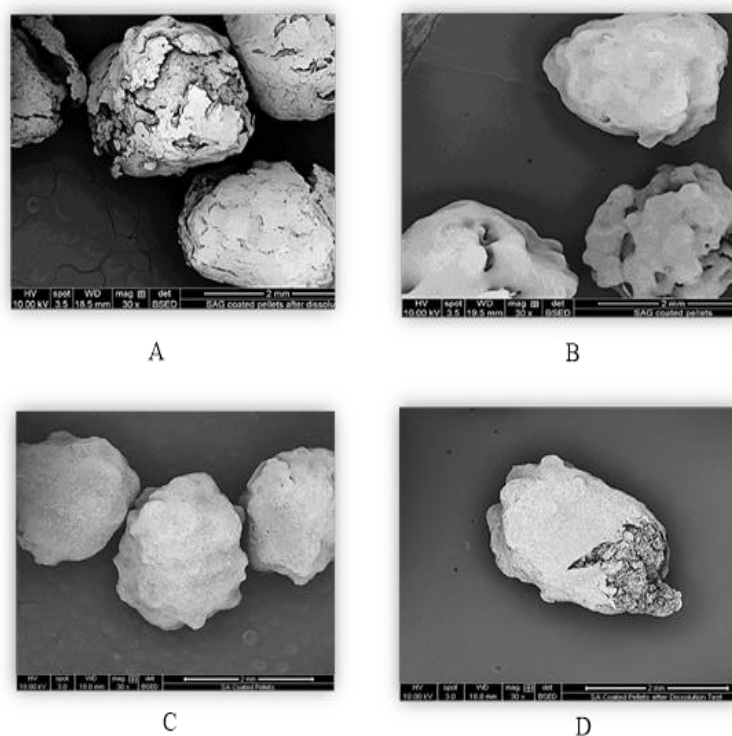


Figure 5. Shows SEM for both SAG and SA coated pellets before and after dissolution test, (A) SAG coated pellets after dissolution test, (B) SAG-coated pellets before dissolution test, (C) SA coated pellets before dissolution test, (D) SA coated pellets after dissolution test.

4. Conclusions

As an initial start, this study primarily developed a two-layer coating film using natural soy and whey proteins, demonstrating promising potential for delayed-release applications. The dissolution experiments revealed that the SA and SAG films maintained their integrity in acidic conditions for up to 2 h and effectively released the dye under intestinal conditions at pH 6.8. These findings suggest that such protein-based coatings could benefit pharmaceutical dosage forms, offering advantages as dietary supplements and nutraceutical products. However, the formulations using whey protein alone or blended with zein protein did not yield successful results, indicating a need for further research to optimise enteric coatings from protein-based films like WPI and SPI. Overall, the study focuses on the potential of natural polymers as viable alternatives to synthetic polymers for enteric coatings, although challenges that require additional investigation remain. Despite the promising results, the study acknowledges limitations in the current study. The formulations using whey protein alone or blended with zein protein were studied in debt. Future research is needed to optimise protein-based films like WPI and SPI for enteric coating applications.

Author Contributions: Methodology, E.B.; validation and testing E.B.; data analysis, E.B., A.S., S.T. and M.M.; investigation, E.B. and M.M.; resources, E.B. and A.S.; writing—original draft preparation, E.B.; writing—review E.B., M.M., S.T. and A.S. and editing, E.B., M.M., S.T. and A.S. All authors have read and agreed to the published version of the manuscript.

Funding: This research received no external funding.

Institutional Review Board Statement:

Informed Consent Statement: Not applicable.

Data Availability Statement: Data are contained within the article.

Acknowledgments: The authors would like to recognise the assistance provided by Medical Research Center Zawia, Libyan Authority for Scientific Research, as well as the Libyan Scholarship Program and the support from Huddersfield University during this research program.

Conflicts of Interest: The authors declare no conflicts of interest.

References

1. Bajpai, A.K.; Shukla, S.K.; Bhanu, S.; Kankane, S. Responsive polymers in controlled drug delivery. *Prog. Polym. Sci.* **2008**, *33*, 1088–1118. <https://doi.org/10.1016/j.progpolymsci.2008.07.005>.
2. Davoodi, S.H.; Shahbazi, R.; Esmaeili, S.; Sohrabvandi, S.; Mortazavian, A.; Jazayeri, S.; Taslimi, A. Health-Related Aspects of Milk Proteins. *Iran. J. Pharm. Res. IJPR* **2016**, *15*, 573–591. Available online: <http://www.ncbi.nlm.nih.gov/pubmed/27980594> (accessed on).
3. Farag, Y.; Leopold, C.S. Development of shellac-coated sustained release pellet formulations. *Eur. J. Pharm. Sci.* **2011**, *42*, 400–405. <https://doi.org/10.1016/j.ejps.2011.01.006>.
4. Heller, J. The influence of physiological factors on the function of enteric coatings. *J. Pharm. Sci.* **1993**, *1*.
5. Katona, M.T.; Kakuk, M.; Szabó, R.; Tonka-Nagy, P.; Takács-Novák, K.; Borbás, E. Towards a Better Understanding of the Post-Gastric Behavior of Enteric-Coated Formulations. *Pharm. Res.* **2022**, *39*, 201–211. <https://doi.org/10.1007/s11095-021-03163-0>.
6. Maderuelo, C.; Lanao, J.M.; Zarzuelo, A. Enteric coating of oral solid dosage forms as a tool to improve drug bioavailability. *Eur. J. Pharm. Sci.* **2019**, *138*, 105019. <https://doi.org/10.1016/j.ejps.2019.105019>.
7. Muley, S.; Nandgude, T.; Poddar, S. Extrusion–spherionization a promising pelletization technique: In-depth review. *Asian J. Pharm. Sci.* **2016**, *11*, 684–699. <https://doi.org/10.1016/j.ajps.2016.08.001>.
8. Salawi, A. Pharmaceutical Coating and Its Different Approaches, a Review. *Polymers* **2022**, *14*, 3318. <https://doi.org/10.3390/polym14163318>.
9. Siepmann, J.; Faham, A.; Clas, S.-D.; Boyd, B.J.; Jannin, V.; Bernkop-Schnürch, A.; Zhao, H.; Lecommandoux, S.; Evans, J.C.; Allen, C.; et al. Lipids and polymers in pharmaceutical technology: Lifelong companions. *Int. J. Pharm.* **2019**, *558*, 128–142. <https://doi.org/10.1016/j.ijpharm.2018.12.080>.

Disclaimer/Publisher’s Note: The statements, opinions and data contained in all publications are solely those of the individual author(s) and contributor(s) and not of MDPI and/or the editor(s). MDPI and/or the editor(s) disclaim responsibility for any injury to people or property resulting from any ideas, methods, instructions or products referred to in the content.