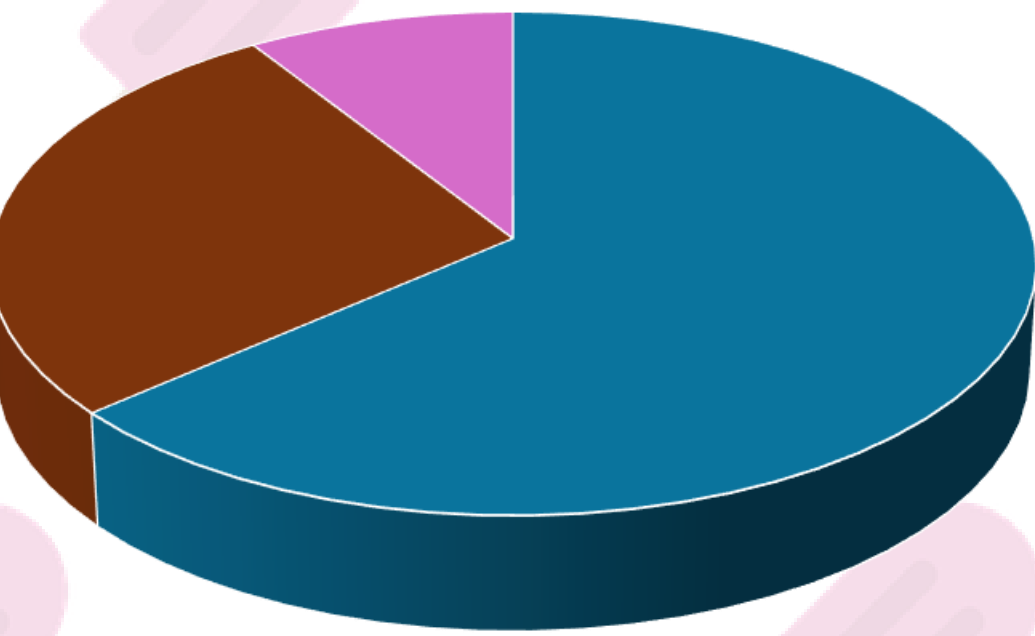


Serological Typing and Antibigrams of *Listeria Monocytogenes* Strains Isolated from Raw Milk, Whey and Ice cream

Antonia Mataragka¹, Christiana Chaintari², John Ikonomopoulos¹, Nikolaos D. Andritsos²

¹Laboratory of Anatomy and Physiology of Farm Animals, Department of Animal Science, School of Animal Biosciences, Agricultural University of Athens, Greece; ²Department of Food Science and Technology, School of Agricultural Sciences, University of Patras, Greece

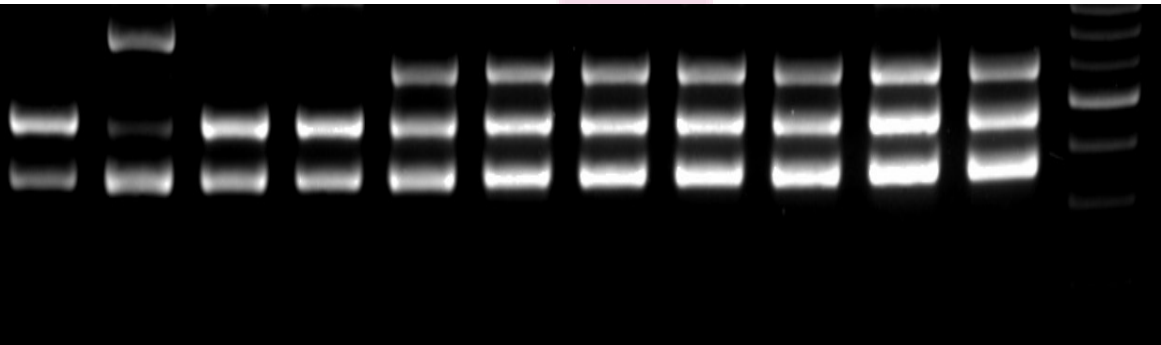


- 4b,4d,4e
- 1/2 b, 3b
- 1/2 a, 3a

Notably, all the strains of serogroup IVb, which includes serotype 4b, most commonly responsible for listeriosis outbreaks in humans, were isolated from the same company, and concerned the ice cream production line



a/a	Serotype
1	1/2b or 3b
2	1/2a or 3a
3	1/2b or 3b
4	1/2b or 3b
5	4b or 4d or 4e
6	4b or 4d or 4e
7	4b or 4d or 4e
8	4b or 4d or 4e
9	4b or 4d or 4e
10	4b or 4d or 4e
11	4b or 4d or 4e



Six strains exhibited resistance to at least one of the examined antibiotics, while no strain exhibited resistance to AMP and MEM, with the former being the drug of choice for the treatment of listeriosis



Two strains of serogroups IIb and IVb exhibited resistance to four and three antibiotics, respectively

Categorization of AST results							
a/a	E	TE	P	SXT	AMP	CIP	MEM
1	R	R	R	R	S	I	S
2	S	S	S	S	S	I	S
3	S	S	S	S	S	I	S
4	R	S	R	S	S	I	S
5	S	S	S	S	S	I	S
6	S	S	S	S	S	R	S
7	R	S	R	S	S	I	S
8	R	S	S	S	S	I	S
9	S	S	S	S	S	I	S
10	S	S	S	S	S	I	S
11	R	R	R	S	S	I	S
Resistant	5	2	4	1	0	1	0