



# Bioactive secondary metabolites from *Lippia salsa* Griseb. (Verbenaceae)

**Florencia Antonella Musso, Valeria Cavallaro and Ana  
Paula Murray**

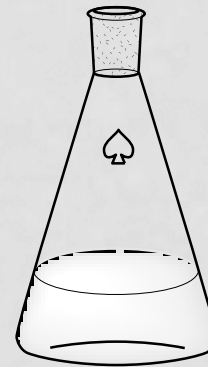
INQUISUR-CONICET, DEPARTAMENTO DE QUÍMICA, UNIVERSIDAD  
NACIONAL DEL SUR, AVDA. ALEM 1253, BAHÍA BLANCA,  
ARGENTINA. E-MAIL: [apmurray@uns.edu.ar](mailto:apmurray@uns.edu.ar)

# Bioactive secondary metabolites from *Lippia salsa* Griseb. (Verbenaceae)



***Lippia salsa* (Verbenaceae)**  
endemic species from Argentina

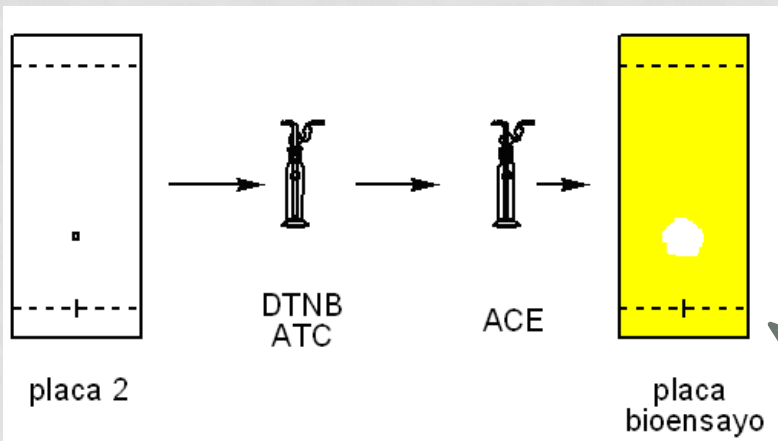
# Bioactive secondary metabolites from *Lippia salsa* Griseb. (Verbenaceae)



Ethanolic extract

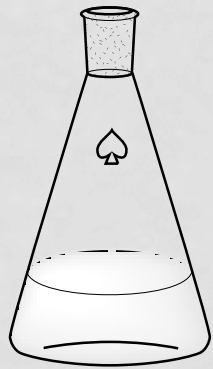


+ AChE inhibition  
 $IC_{50} = 0.89 \text{ mg/mL}$

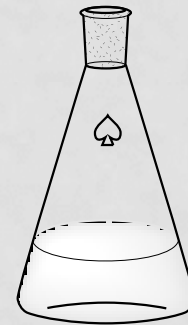
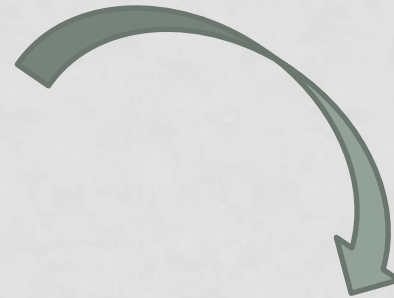
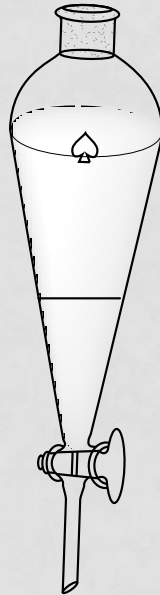


# Bioactive secondary metabolites from *Lippia salsa* Griseb. (Verbenaceae)

- Liquid-liquid extraction



Ethanolic extract  
suspended in H<sub>2</sub>O

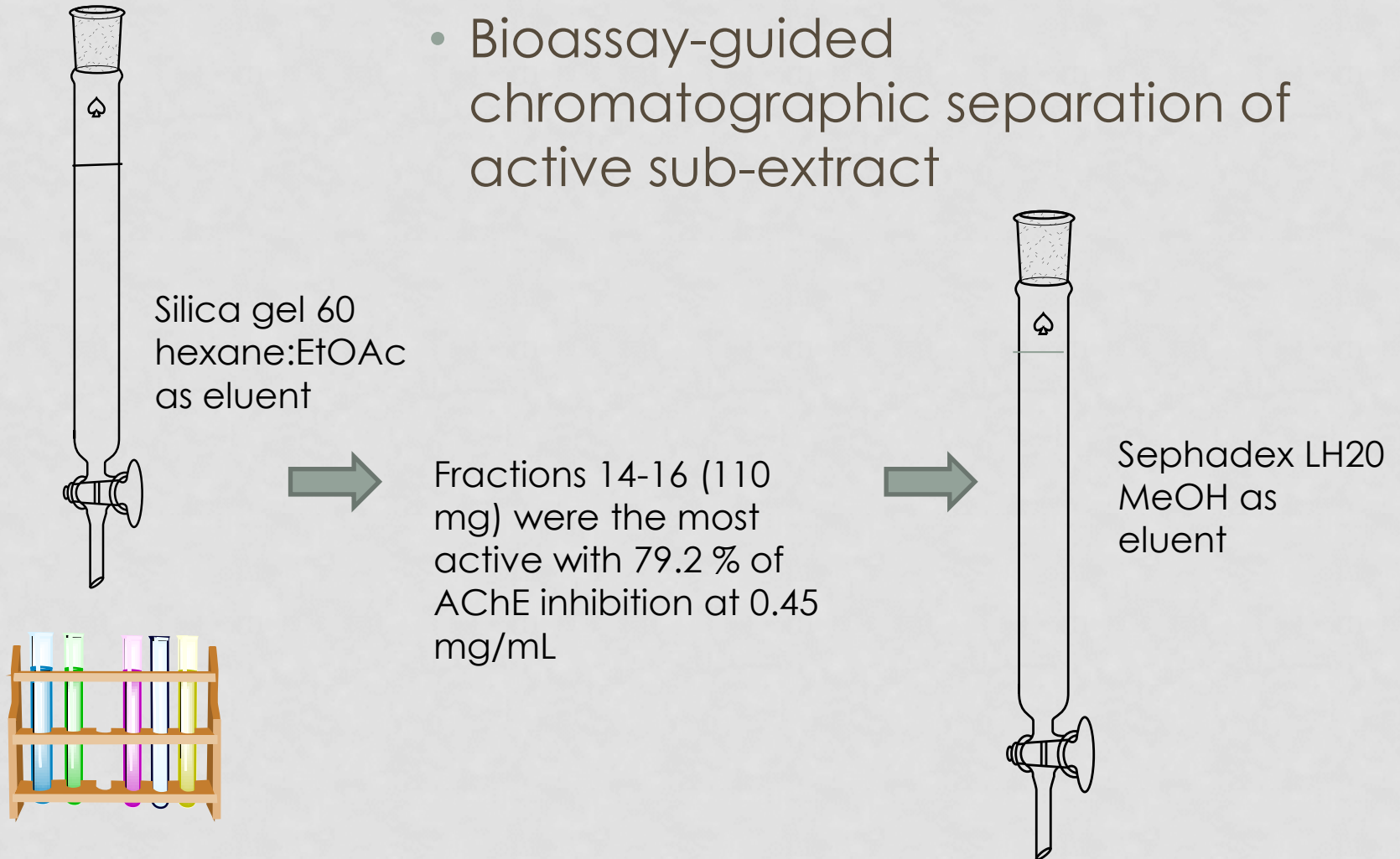


EtOAc sub-extract  
+ AChE inhibition  
(40 % inhibition at  
0.45 mg/mL)



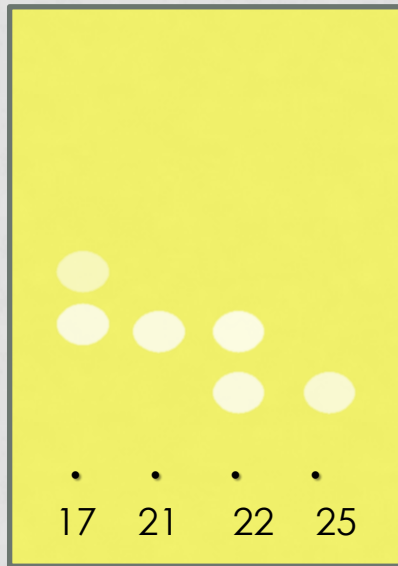
# Bioactive secondary metabolites from *Lippia salsa* Griseb. (Verbenaceae)

- Bioassay-guided chromatographic separation of active sub-extract



# Bioactive secondary metabolites from *Lippia salsa* Griseb. (Verbenaceae)

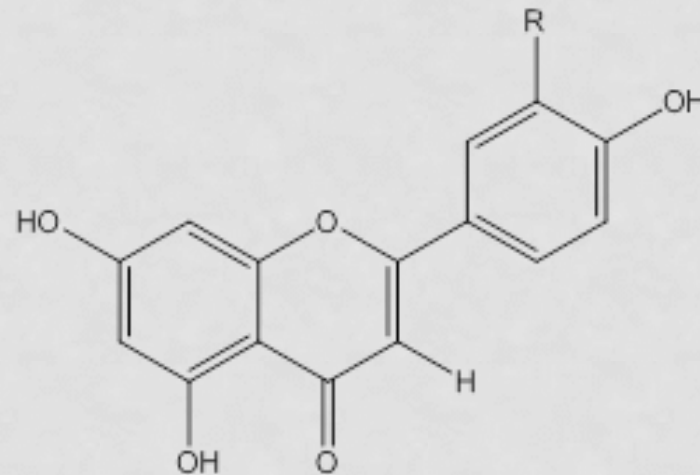
- Bioassay-guided purification of active fractions



**2**



**1**



1: R = OH  
2: R = H