



# Neuro-Adaptive Machines: An Edge-Intelligent Framework for Real-Time Condition Monitoring and Self-Optimizing Control

Mohamed Mazloum Salem

Department of Computer Science, Faculty of Computers and Information, Mansoura University

[Mosh2eb@gmail.com](mailto:Mosh2eb@gmail.com)

## INTRODUCTION

Modern electromechanical systems operate in dynamic and uncertain environments where load variations, component aging, and environmental disturbances continuously affect performance and reliability.

Conventional architectures separate condition monitoring from control, relying on static models and offline analysis. This separation limits responsiveness, delays fault detection, and restricts adaptive optimization during operation.

Most existing monitoring systems focus on signal processing pipelines that detect faults after degradation becomes measurable, while control systems operate with fixed or slowly updated parameters. Such designs prevent machines from understanding their evolving health state and adapting behavior in real time.

## EXPERIMENTAL SETUP

Evaluation was conducted on an electromechanical test platform under dynamic load variations and induced fault scenarios to assess real time monitoring and adaptive control performance. The proposed neuro adaptive framework was deployed on embedded edge hardware and compared against conventional signal processing based monitoring and fixed parameter control strategies.

Performance was measured using fault detection latency, diagnostic accuracy, and operational stability under changing conditions. The setup evaluated the system's ability to detect emerging faults early and maintain stable operation without cloud dependency.

## PROPOSED FRAMEWORK

The proposed neuro adaptive machine framework integrates real time perception, health estimation, and self optimizing control within an edge deployed architecture. Multi modal sensors capture vibration, acoustic, thermal, and electrical signals that are fused to form a unified system state representation.

A lightweight deep learning pipeline performs continuous feature extraction using a sparse neural representation layer optimized for embedded deployment. A continual learning module monitors system evolution, detects drift, and updates internal representations incrementally without cloud dependency.

The learned health state is coupled with a predictive control module that dynamically adjusts operating parameters to mitigate degradation and maintain stability. This closed loop integration transforms monitoring from passive fault detection into proactive health aware control.

The framework is designed for direct deployment on embedded edge hardware with constrained computational and memory resources. Model compression, sparse representations, and incremental updates reduce latency and energy consumption while preserving diagnostic accuracy. Real time inference ensures low response delay between anomaly detection and control adjustment. The absence of cloud dependency enhances reliability, data privacy, and operational continuity in remote or industrial environments.

Experimental results show earlier fault detection and higher accuracy.

## RESULTS AND DISCUSSION

The experimental evaluation demonstrates that the proposed neuro adaptive framework significantly improves real time condition monitoring and control performance under dynamic operating conditions. Compared to conventional signal processing based monitoring and fixed parameter control strategies, the system achieves earlier fault detection and higher diagnostic accuracy across varying load profiles and induced fault scenarios.

The integration of multi modal sensing with sparse neural feature extraction enables robust representation of evolving machine states. Continual learning with drift detection allows the framework to adapt incrementally to changing operating conditions without retraining from scratch. This capability reduces performance degradation under non stationary environments and improves resilience to previously unseen anomalies.

Health state estimation coupled with predictive control provides measurable improvements in operational stability. Instead of reacting only after fault thresholds are exceeded, the system proactively adjusts operating parameters based on learned degradation patterns. This closed loop adaptation reduces oscillations, mitigates progressive wear effects, and enhances control smoothness under fluctuating loads.

Edge deployment on embedded hardware confirms that real time inference and adaptation are achievable under constrained computational resources. Model compression and sparse representations maintain low latency while preserving accuracy, enabling rapid response between anomaly detection and actuator adjustment.

Overall, the results validate the effectiveness of integrating perception, continual learning, and adaptive control within a unified architecture. The framework demonstrates that embedding neuro adaptive intelligence directly into machines enables a transition from passive monitoring toward proactive, self optimizing operation.

### Neuro Adaptive Edge Intelligence Architecture

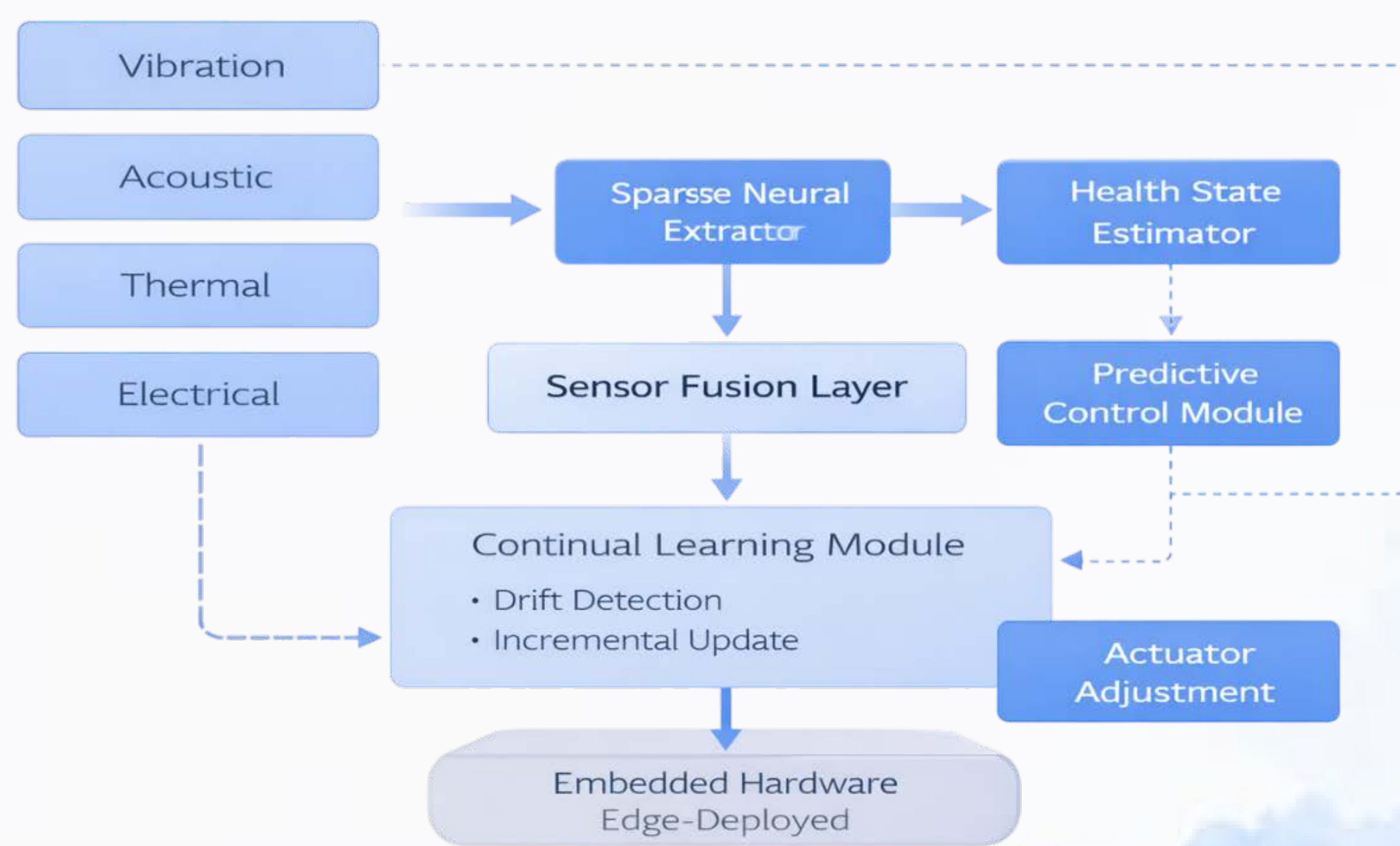


Figure 1. Edge deployed neuro adaptive architecture integrating sensing, continual learning, health estimation, and predictive control.

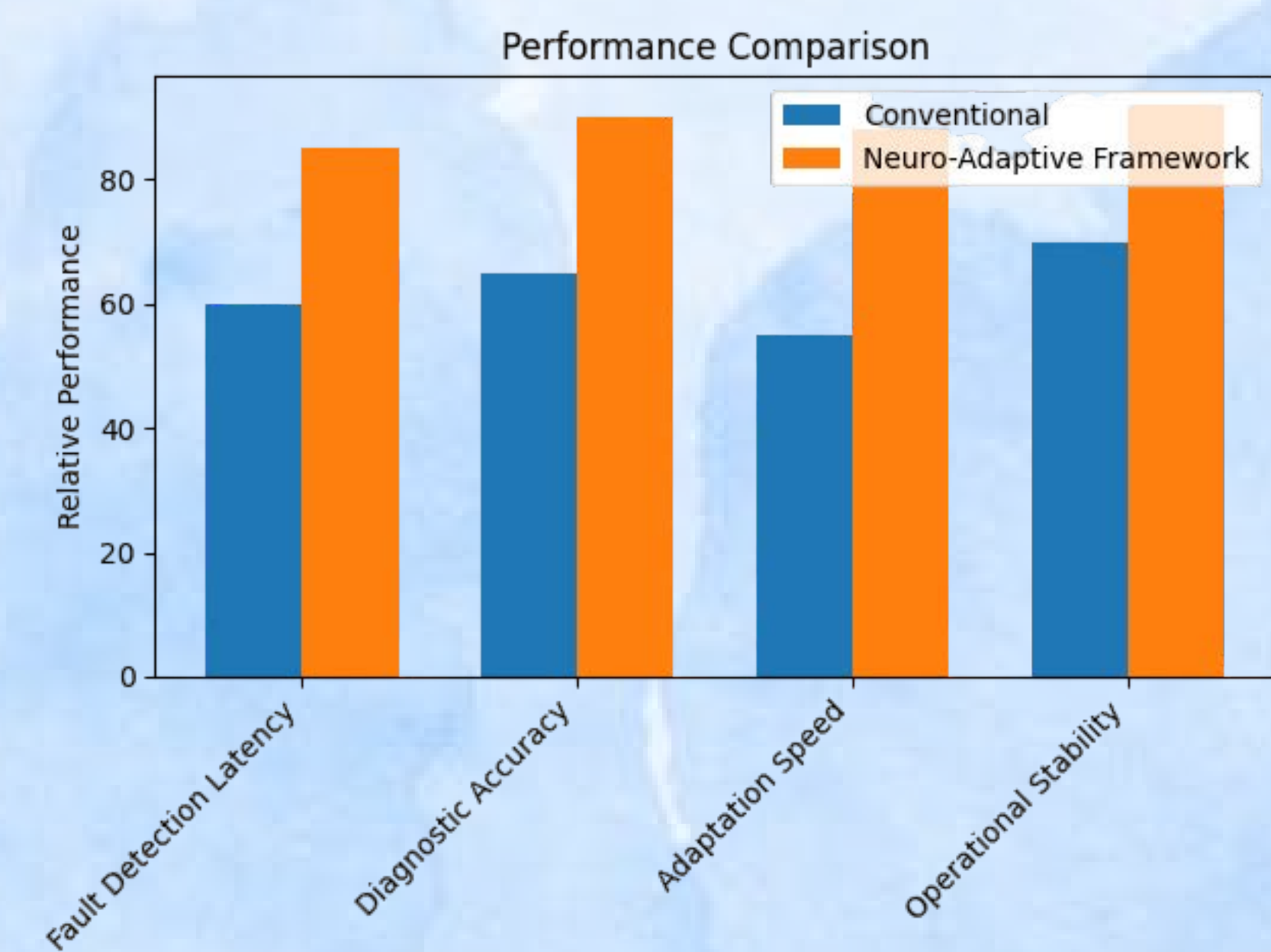


Figure 2. Performance comparison between the proposed framework and conventional methods.

## CONCLUSIONS

- The proposed neuro adaptive framework enables real time health perception and adaptive control at the edge.
- It advances electromechanical systems from passive monitoring toward autonomous self optimizing operation.

### References:

- [1] Y. LeCun, Y. Bengio, and G. Hinton, Deep Learning, Nature, 2015.
- [2] G. Hinton et al., A Fast Learning Algorithm for Deep Belief Nets, Neural Computation, 2006.
- [3] D. Silver et al., Mastering the Game of Go with Deep Neural Networks and Tree Search, Nature, 2016.
- [4] K. Zhou et al., Model Predictive Control Basics, IEEE Control Systems Magazine, 2018.