

## ASSESSING URBANITY THROUGH AN INTEGRATED MULTIDIMENSIONAL FRAMEWORK: IMPLICATIONS FOR URBAN CLASSIFICATION

Amaya Abeywickrama, Samith Madusanka, Lakshika Meetiyagoda

Department of Town and Country Planning,  
University of Moratuwa, Sri Lanka  
[amayamahamaya2000@gmail.com](mailto:amayamahamaya2000@gmail.com)

### INTRODUCTION

Urbanity is often defined using rigid administrative boundaries or single-dimensional metrics, which fail to capture the complexity of contemporary urban systems. This leads to misclassification of transitional and functionally urban areas.

### Research Gap

Absence of an integrated multidimensional framework to more accurately reflect urban characteristics

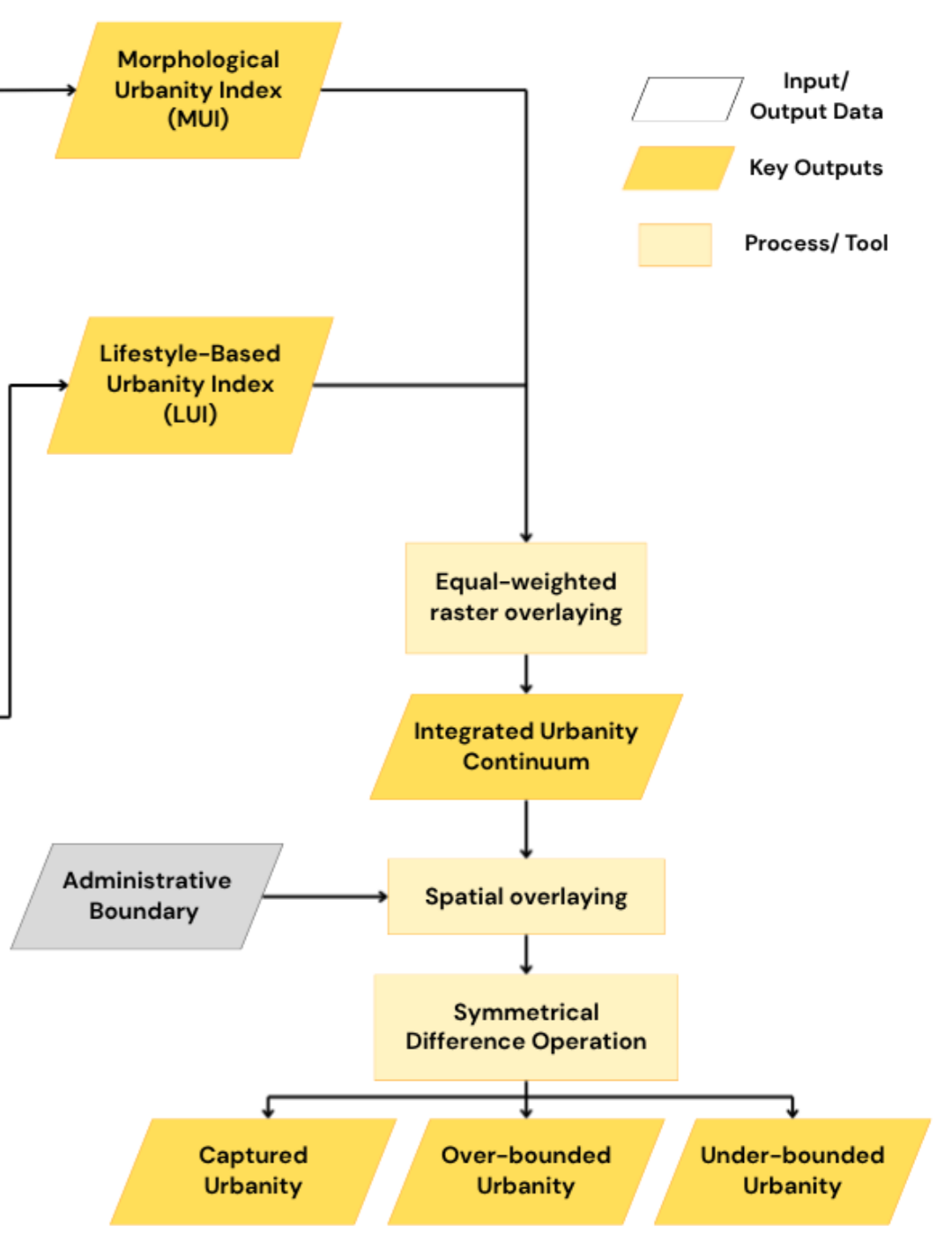
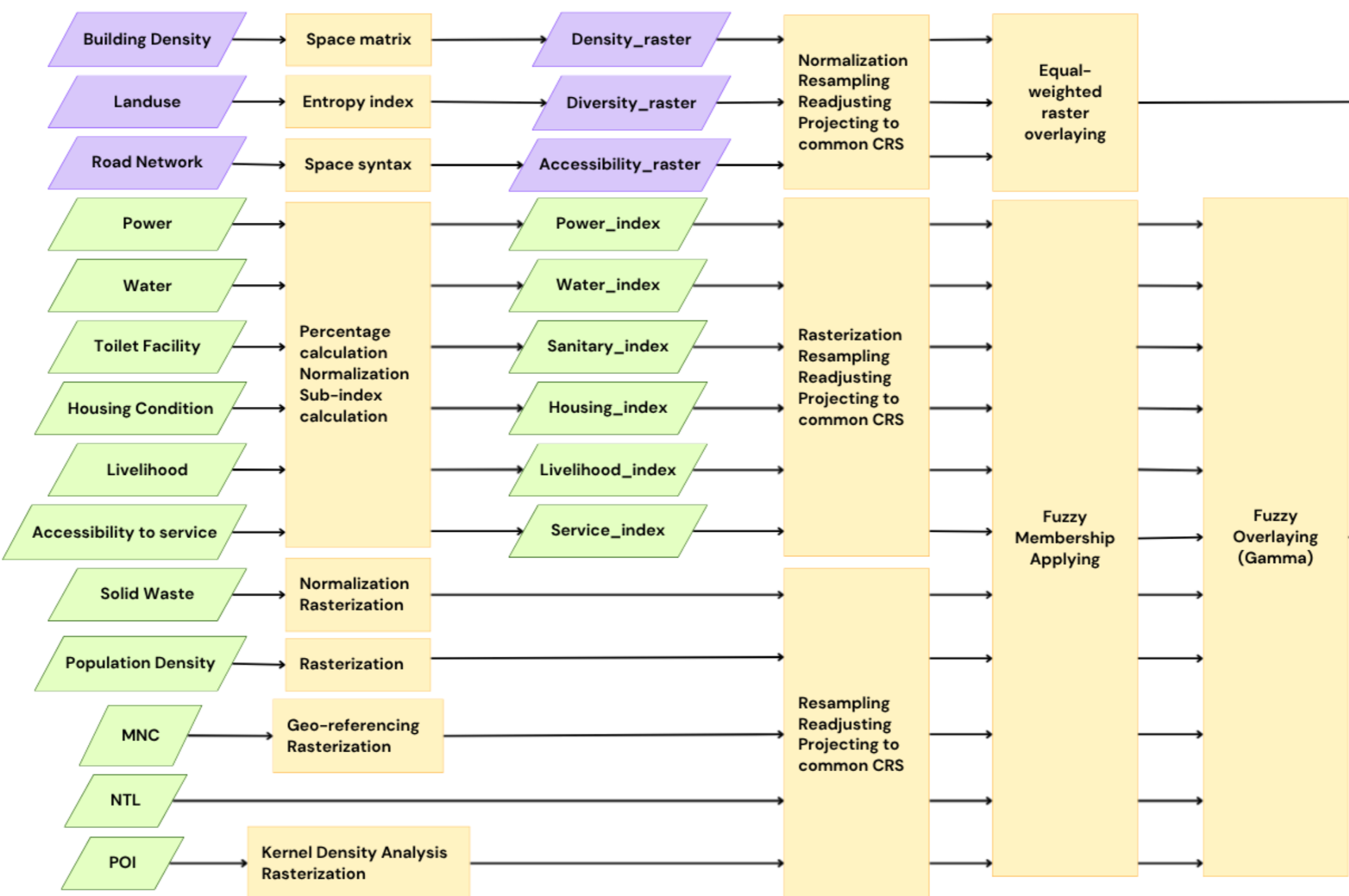
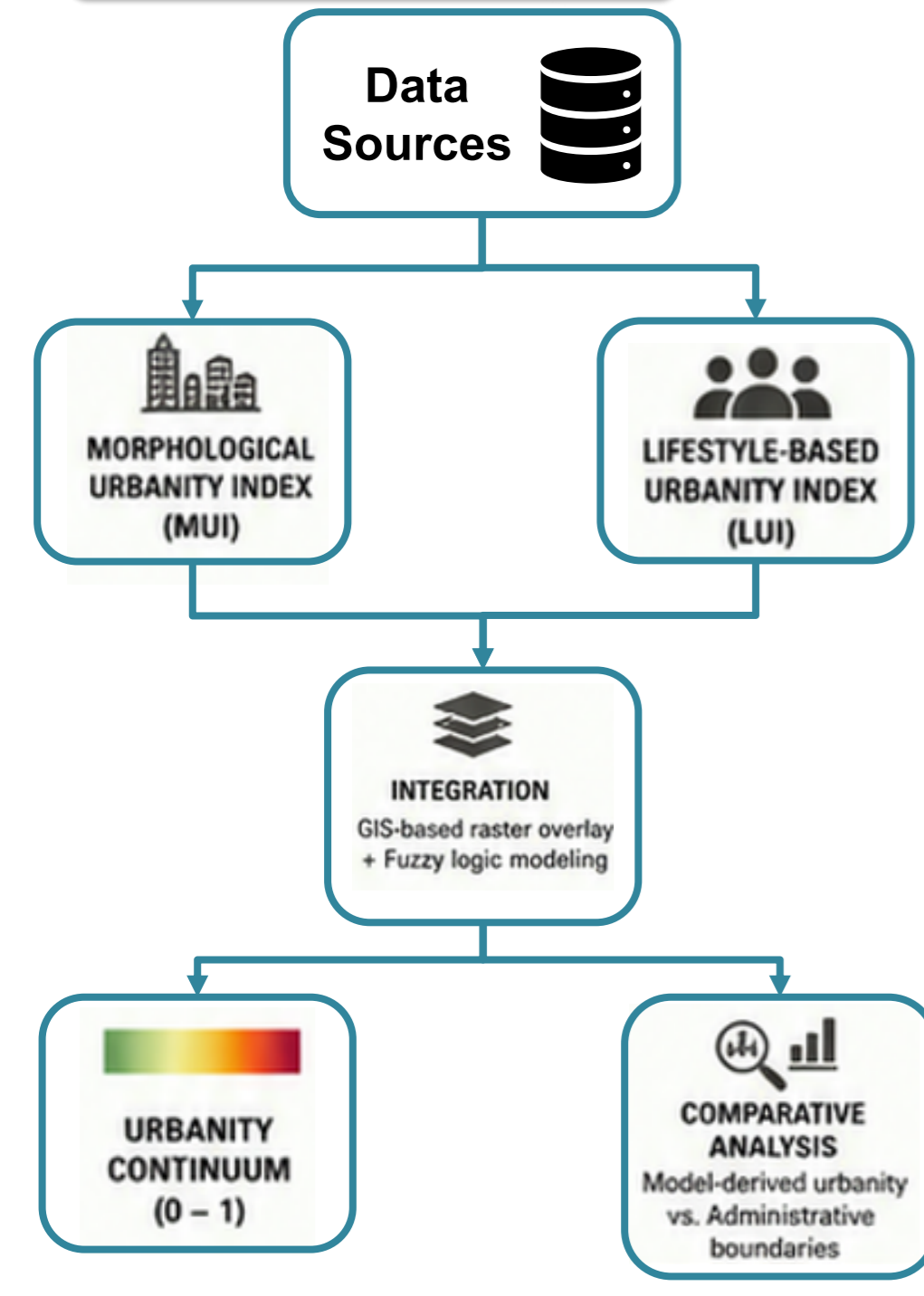
### OBJECTIVE

- ✓ To conceptualize urbanity as a multi-dimensional continuum
- ✓ To develop and apply an integrated analytical framework that combines morphological and lifestyle-based indicators to more accurately capture true urban characteristics

### Study Area

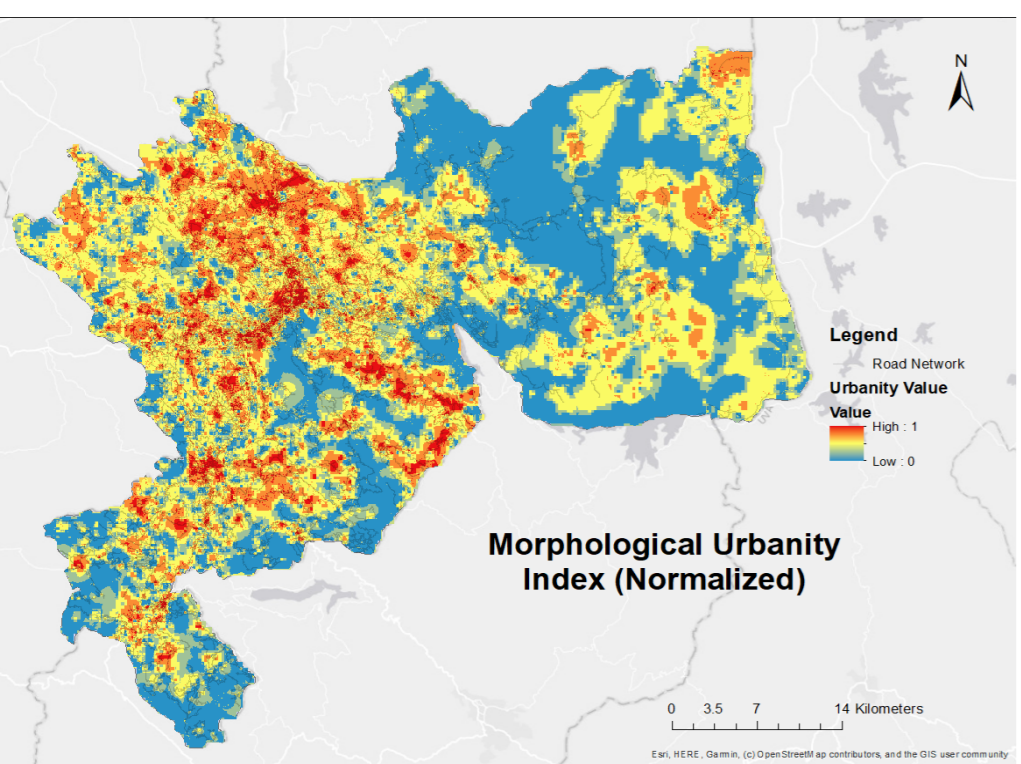


### METHOD



### RESULTS

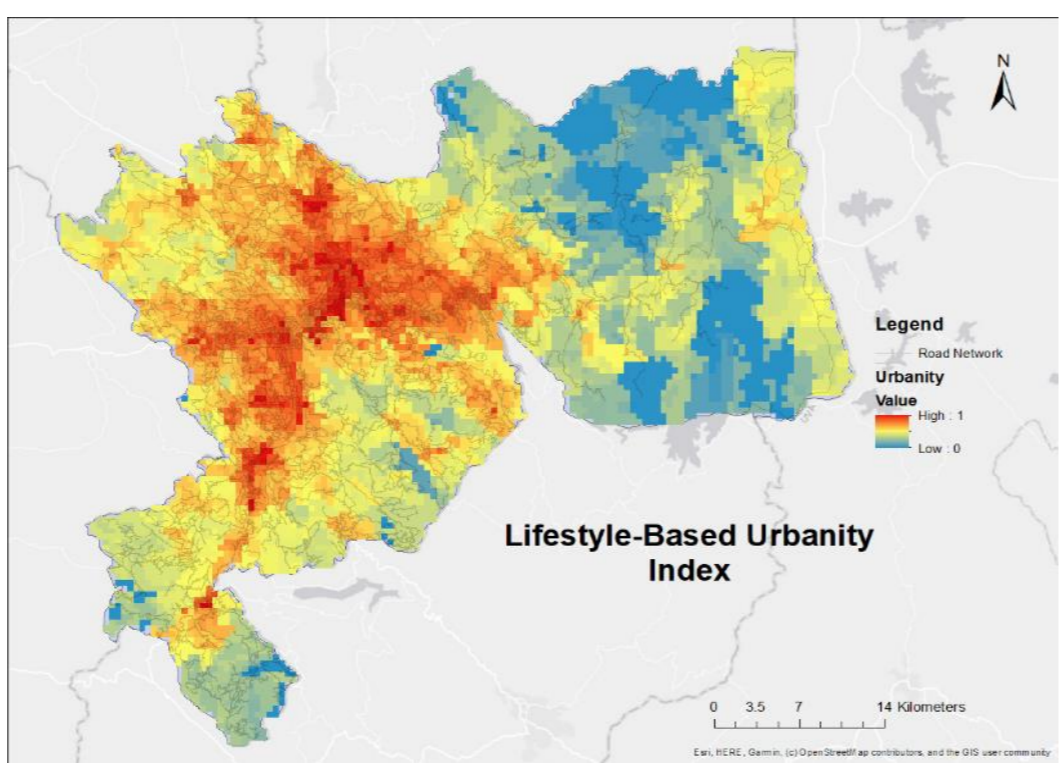
#### 1 Morphological Urbanity Index (MUI)



Captures the physical form and spatial structure of urban areas using three dimensions, Density, Diversity, Accessibility

Standardization (0-1) → Weighted Overlay → MUI (0-1)

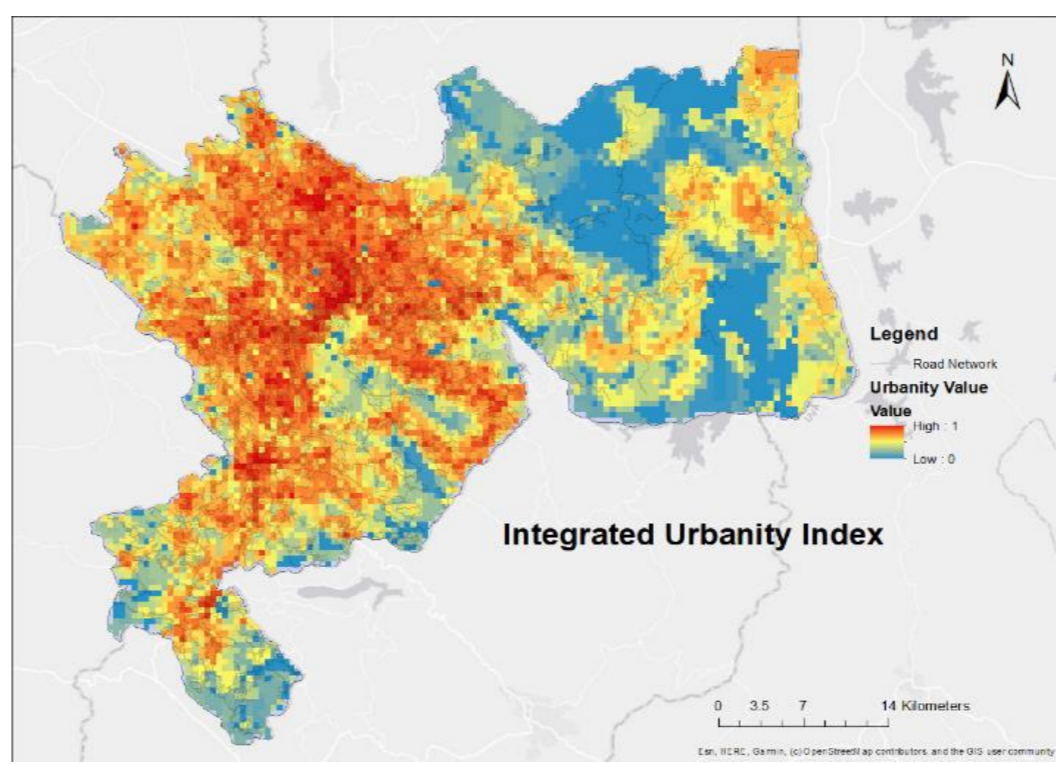
#### 2 Lifestyle-Based Urbanity Index (LUI)



Captures the socio-economic conditions, service availability and urban experience of the population

Standardization (0-1) → Fuzzy Overlay → LUI (0-1)

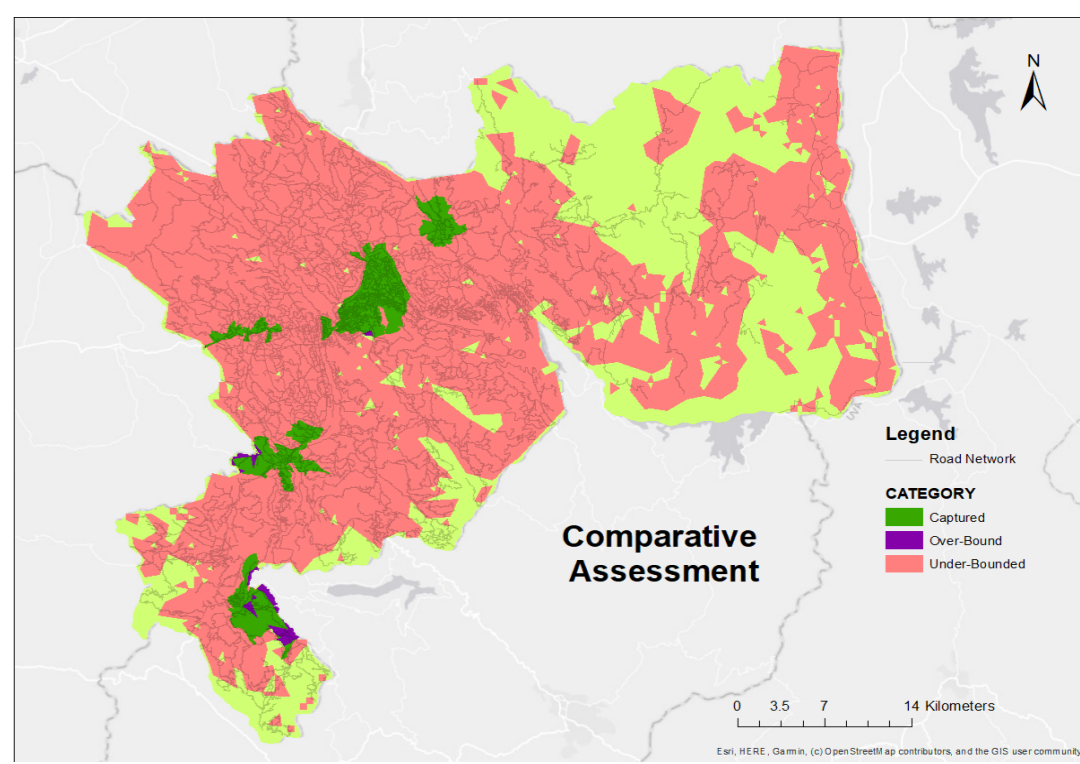
#### 3 Urbanity Continuum



Urbanity varies as a spatial gradient rather than a binary urban-rural condition

Urbanity differs when assessed through form-based and lifestyle-based indices. Their integration captures both spatial structure and lived experience.

#### 4 Comparison with Administrative Boundaries



Significant spatial mismatch exists between model-derived urbanity and administrative boundaries

Category	Area (sq km)
Captured	73.36
Over-bounded	6.19
Under-bounded	1,308.93

### CONCLUSION

**Urbanity as a continuum**

Urbanity varies across space as a gradient, not a binary condition

**Integrated multidimensional approach**

Integrated indices provide more accurate representation

Combining morphological and lifestyle dimensions capture both spatial structure & live experience

**Hidden Urbanization**

Administrative classifications fail to capture functionally urban areas, leading to planning gaps

Significant under-bounded category reveals hidden urbanization

**Globally Applicable**

The Framework is scalable & adaptable to diverse contexts to support better urban classification & planning