

From Homes to Cells: Assessing Genome Damage Induced by Indoor PAH Mixtures

Luka Kazensky¹, Ivana Banić², Ivana Vrhovac Madunić¹, Vedran Micek¹, Katarina Matković¹, Marko Gerić¹, Marija Jelena Lovrić Štefiček¹, Jasmina Rinkovec¹, Ivana Jakovljević¹, Vilena Kašuba¹, Mirta Milić¹, Mirjana Turkalj², Davorka Brelljak¹, Gordana Pehneć¹, Bojana Žegura³, Mario Lovrić^{4,5}, Jon Switters⁵, Francesco Mureddu⁵, Goran Gajski^{1*}

¹Institute for Medical Research and Occupational Health, Zagreb, Croatia

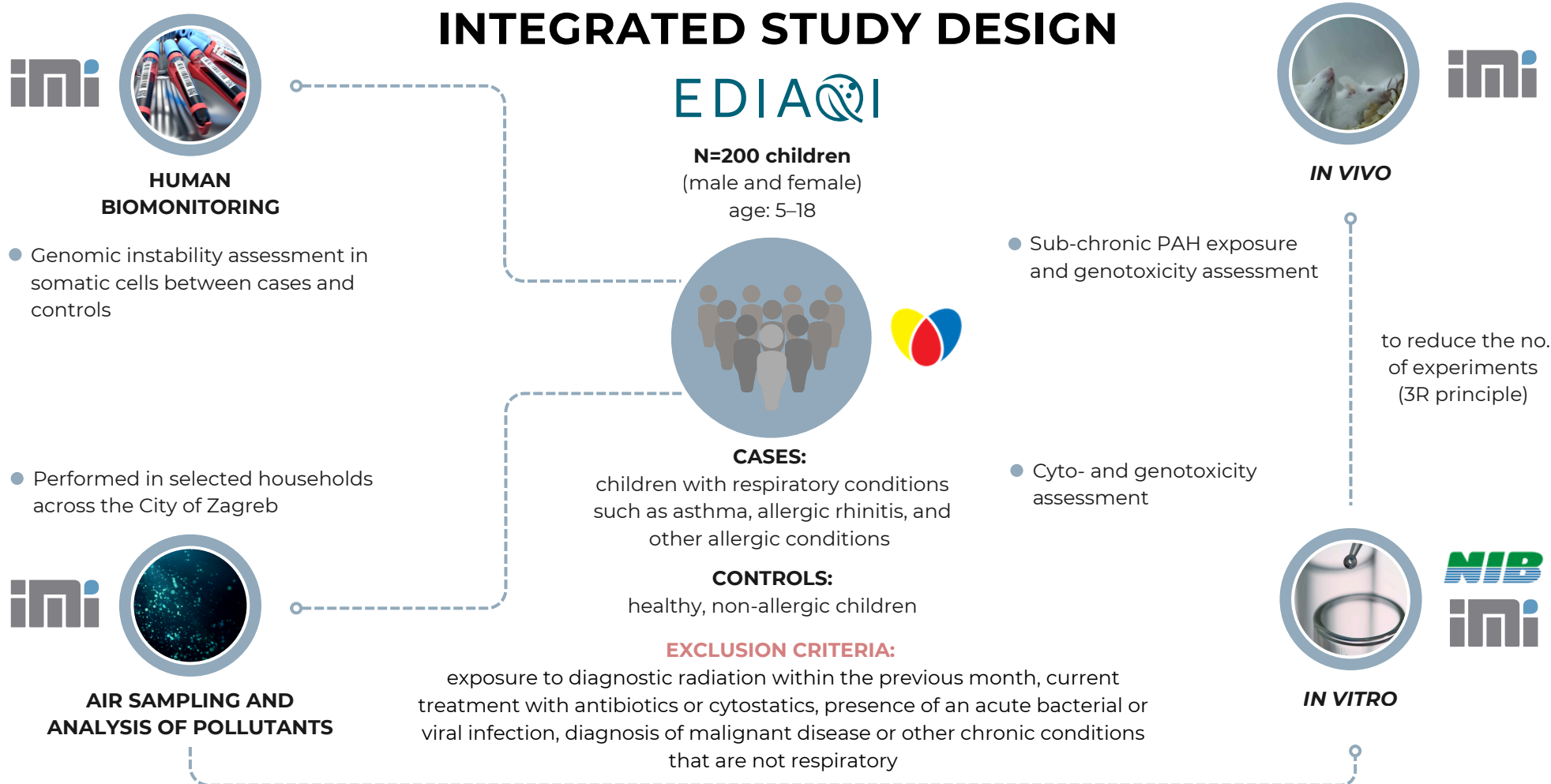
²Srebrnjak Children's Hospital, Zagreb, Croatia,

³National Institute of Biology, Ljubljana, Slovenia

⁴Institute for Anthropological Research, Zagreb, Croatia

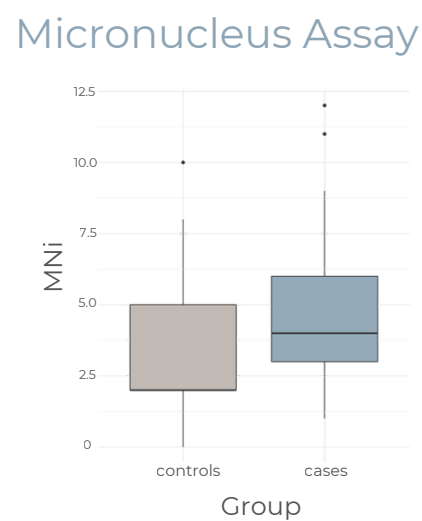
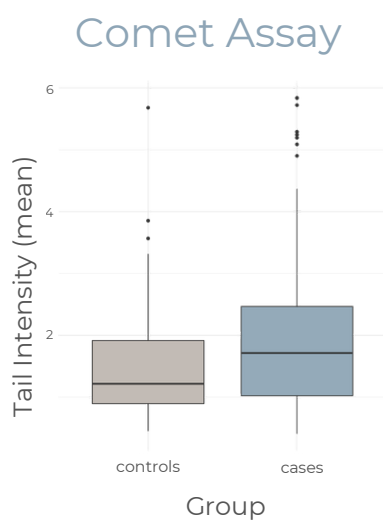
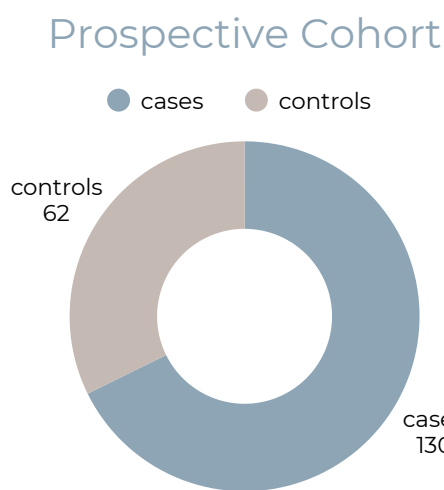
⁵The Lisbon Council, Brussels, Belgium

INTEGRATED STUDY DESIGN

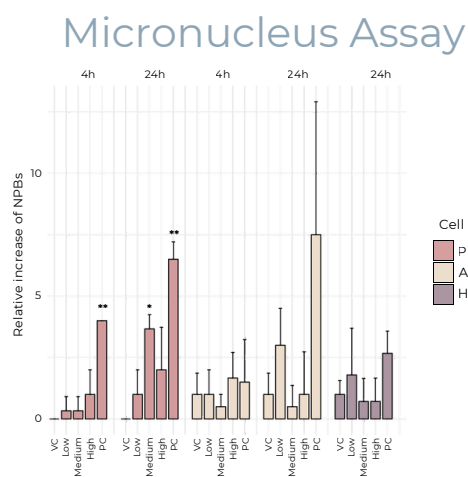
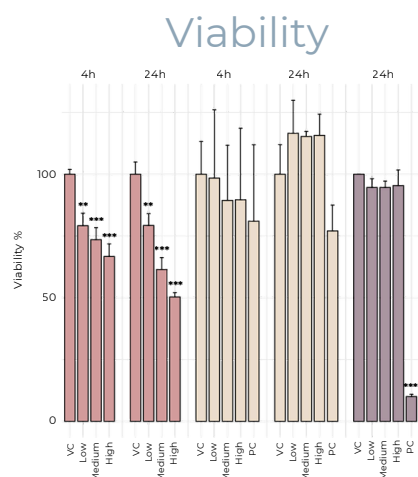


RESULTS

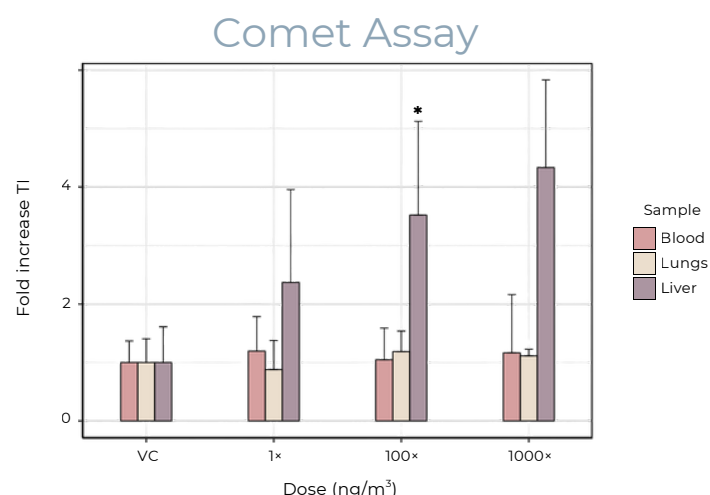
HUMAN BIOMONITORING



IN VITRO



IN VIVO



CONCLUSION

At realistic indoor levels, effects were negligible – indicating no cause for alarm under normal household conditions