



1 *Conference Proceedings Paper*

2 **Sentinel-1 data border noise removal and seamless** 3 **SAR mosaic generation**

4 **Yi Luo ^{1,*} and Dean Flett ¹**

5 ¹ Canadian Ice Service, Environment and Climate Change Canada

6 * Correspondence: Yi.Luo@canada.ca; Tel.: +1-613-943-5755

7 Published: 22 March 2018

8 Academic Editor:

9 **Abstract:** The Canadian Ice Service (CIS) is receiving hundreds of SAR images daily with almost a
10 complete coverage of the Canada navigable waters for monitoring and mapping of seasonal sea and
11 lake ice. In order to efficiently use and analyze such a large amount and a wide areal extent of data,
12 short-term (i.e. 12 hours to a few days) high-resolution mosaic products are of interest. Among these
13 SAR images Sentinel-1 data have been known with an issue of border noise which needs to be
14 removed before generating a seamless mosaic. A method using line-by-line scanning and filtering
15 is proposed, which traces an extreme jump between two neighboring pixels along every scan line.
16 The results show this method can remove the noise precisely while retaining the rest of the valid
17 data. For visual display, analysis, and interpretation, such as that done at the CIS, a tone-balanced
18 smooth mosaic is of interest and value to ice analysts in displaying overall ice distribution and in
19 viewing and comparing cross-region ice conditions. To address this, a scene boundary match
20 balancing method is developed. These short-term mosaic products are proved very helpful in daily
21 ice analysis and macroscopic ice drift measurement.

22 **Keywords:** SAR; Sentinel-1; border noise; SAR mosaic; tone balance

24 **1. Introduction**

25 The Canadian Ice Service (CIS) relies on a variety of Earth Observation datasets to operationally
26 monitor sea and lake ice in Canadian waters. Among them space-borne Synthetic Aperture Radar
27 (SAR) is the primary data source due to its high-resolution, all-weather, and day-or-night collection
28 capability. In addition to RADARSAT-2, recently available Sentinel-1 A and B have provided more
29 capability with enhanced revisit frequency and extended spatial coverage. Currently, a typical 48-
30 hour availability of SAR images received at CIS is shown in Figure 1. Considering that the three-
31 satellite RADARSAT Constellation Mission (RCM) developed by Canadian Space Agency (CSA) will
32 be launched in late 2018, the number of SAR images will keep increasing without doubt. To help CIS
33 analysts viewing and analyzing data efficiently and comprehensively, automated big data processing
34 and computer-assisted products generating should be of desirable interest. A regional or Pan-Arctic
35 SAR mosaic product could be one of them. Actually, various SAR mosaic products are developed
36 and used for different applications, such as global forest investigation from L-band ALOS PALSAR
37 [1] and national land mapping from EnviSat ASAR [2]. Unlike land applications where a mosaic may
38 use data collected in a relatively long term, e.g. from one or several months to even a year, sea ice
39 conditions are generally very dynamic and can change dramatically in a few days. Therefore a short-
40 term (12 hours to a few days) and near real-time mosaic for sea ice is required. An automated
41 RADARSAT-2 mosaicking system has been developed before at the CIS [3] and the regional multi-
42 day mosaic images for the Canadian Arctic are provided on a weekly basis [4]. Based on previous

43 works an improved system is implemented to be able to incorporate images observed by different
44 satellites and sampled at different scales, such as C-band Sentinel-1 and RADARSAT-2, and the
45 future RCM.

46 It is known that Sentinel-1 images are impacted by the so-called border noise effect. These noises,
47 i.e. non-zero artifacts, appear as a thin strip along the borders of both range and azimuth directions
48 (see Figure 2). They are thought to be caused by processor failure in documenting the invalid sensing
49 areas. Such noise needs to be removed before generating a seamless mosaic. Although the Sentinel
50 Application Platform (SNAP) toolbox [5] released by the European Space Agency (ESA) includes a
51 module called “Sentinel-1 Remove GRD Border Noise”, in practice this tool works well on land but
52 does not work properly over ocean. When the backscattering signals are low, e.g. from water,
53 applying this tool can either leave lots of residuals or take off many valid data. A few other methods
54 have been recently proposed to deal with these noise and better results are shown comparing to those
55 from the SNAP tool [6, 7]. In order to appropriately remove border noises in scenes specifically over
56 sea ice and open water, a method using line-by-line scanning and filtering is proposed in this paper.

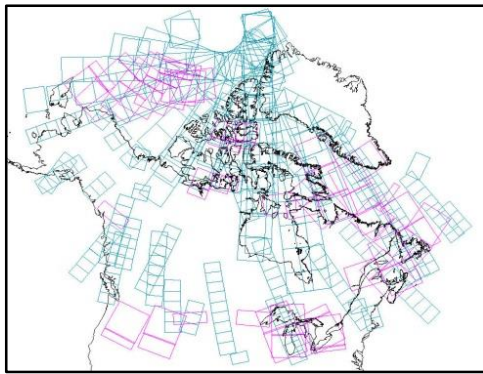


Figure 1. Availability of SAR images at CIS during February 6 and 7, 2018, for RADARSAT-2 (pink) and Sentinel-1 A/B (blue).

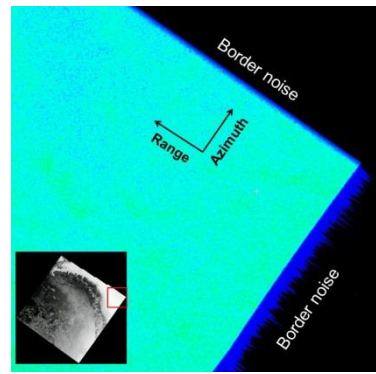


Figure 2. Border noises in Sentinel-1 image that appear along both the range and the azimuth edges.

57 2. Mosaic methodology

58 The CIS obtains Sentinel-1 A/B Level-1 Ground Range Detected (GRD) products for Canadian
59 waters from Collaborative Data Hub in Canada (under agreement between CSA and ESA). The data
60 are processed using a CIS importer, and the output images contain border noises as shown in Figure
61 2 where a corner (red box) of a Sentinel-1 scene is enlarged and the noises are enhanced by dark blue
62 color. Such border noises should be removed before data used for generating a mosaic.

63 2.1 Border noise removal

64 The magnitude of border noise varies scene to scene and for a few cases it is even equivalent to
65 that of valid data, so a predetermined-threshold masking approach is not feasible. Cropping image
66 by a certain width of border margin may remove the noise but also cut off good data. Such
67 indiscriminate cropping could result in a no-data gap between two consecutive scenes. Also
68 considering that most of the images received are processed already onto a local map projection
69 instead of in its Level-1 swath format, a method using line-by-line scanning and filtering is proposed.
70 The idea is based on the fact that noise value is generally far less than a valid one. The method traces
71 an extreme jump between two neighboring pixels along a scan line and then locates the separation
72 point of noise and valid data. The jump can be expressed as a ratio of values of two neighboring
73 pixels (non-zero) and the maximum ratio represents very likely the extreme jump as displayed in
74 Figure 3. In practice there is a condition applied to this maximum ratio, i.e. it should be significantly

75 larger than the second maximum ratio. This is to avoid a false locating of separation point. Generally
 76 this line-by-line scanning and filtering method works for most cases but there are still a couple of
 77 issues especially for images dominated by open water and sea ice. First, some open water pixels have
 78 very low backscattering that is almost equivalent to those of noises (see Figure 4a), and then the
 79 maximum ratio may not happen at the real separation point but at the boundary of water and ice. It
 80 results in an overshoot filtering as shown in Figure 4b. To prevent it a 2nd round scanning is introduced
 81 which applies a limit on how deep the scanning can get inside the image. The limit depth comes from
 82 an average width of noise belt estimated during the 1st round scanning. The second issue is that after
 83 scanning horizontally and vertically the noises are not completely removed for some cases, i.e. there
 84 are a few noise residuals. To solve it two additional scans should be done at tilted directions of 45°
 85 and 135° respectively to the horizontal.
 86

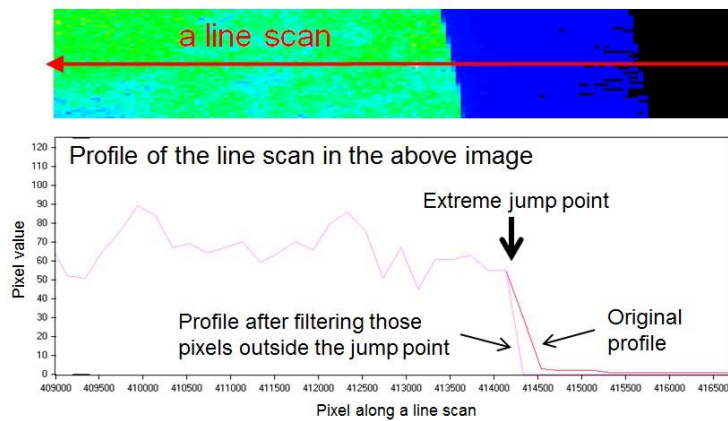


Figure 3. Diagram of a line scan and profile of the line scan

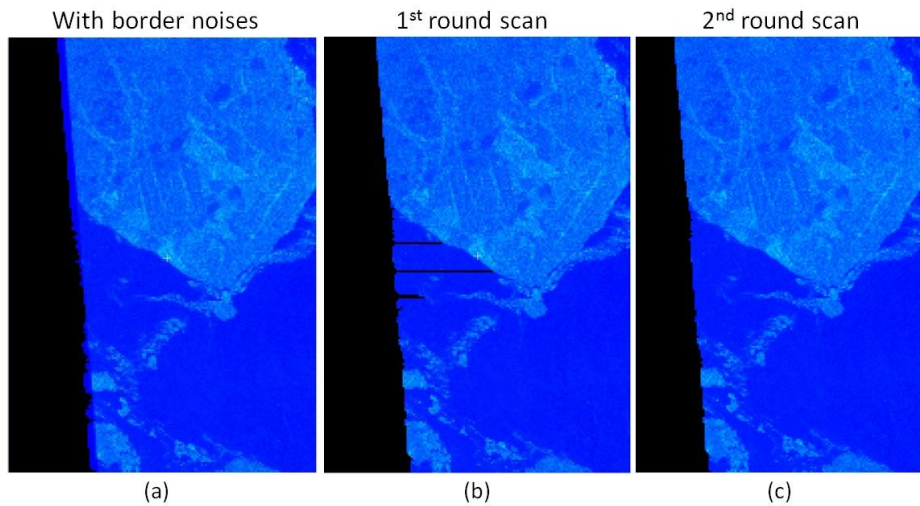


Figure 4. (a) Sentinel-1 image with border noises on the left edge; (b) 1st round scan with noises removed but a few overshooting lines; (c) 2nd round scan by a limited width of noise belt estimated through the 1st round scan.

87 2.2 Tone-balanced mosaic generation

88 A mosaic is comprised of multiple scenes collected when they fall into an observing time
 89 window and a geographic range box. After all scenes are re-projected onto the same map projection
 90 (e.g. the polar stereographic one shown in Figure.1) and all pixels are re-sampled into the same spatial
 91 size, they can be stitched together to make one single mosaic image. Once there appears overlapping,

92 i.e. more than one scene collected over the same geolocation, only one would be retained normally
 93 following a rule such as keeping the latest observed or the best quality possessed. Mosaicking SAR
 94 images acquired at different times, look directions, and observation angles is a challenge due to the
 95 scene-to-scene signal and tonal variations. For visual display, analysis, and interpretation – such as
 96 that done at the CIS – a tone-balanced smooth mosaic is of interest and value to ice analysts in
 97 displaying overall ice distribution and in viewing and comparing cross-region ice conditions. To
 98 address this, a scene boundary match method is developed to generate a seamless and tone-balanced
 99 mosaic product.

100 Assuming that two scenes have a common boundary but the boundary values are S_L for the left
 101 scene and S_R for the right one, a simple way to match the boundary is to multiply S_L and S_R
 102 by coefficients of ϵ_L and ϵ_R , respectively, and then make both sides be equal to a balanced value S_B
 103 as described in Figure 5a. S_B should be thought as a linear or nonlinear combination of S_L and S_R . If
 104 assuming there is no difference between S_L and S_R regarding data quality (e.g. SNR level) or other
 105 priorities (e.g. incident angle, weather conditions etc.), $S_B = (S_L + S_R)/2$ could be a good match. Once the
 106 balanced formula S_B is defined, coefficients ϵ_L and ϵ_R could be derived as a function of boundary
 107 values S_L and S_R . Actually, S_L and S_R are not values of a single pixel on the boundary. Instead,
 108 they are from statistically averaging a bundle of nearby pixels that surround each boundary pixel. For a
 109 pixel away from any boundary, the balancing could be impacted by all coefficients of all boundaries.
 110 To simplify the process but still efficiently maintain all direction balancing scheme, an octal-direction
 111 boundary matching is applied as shown in Figure 5b. The balancing coefficient of any pixel is
 112 determined by the sum of eight coefficients ($\epsilon_1, \epsilon_2, \dots, \epsilon_8$) weighted by their inverse distance ($1/r_1,$
 113 $1/r_2, \dots, 1/r_8$) which is measured from a boundary to that pixel.
 114

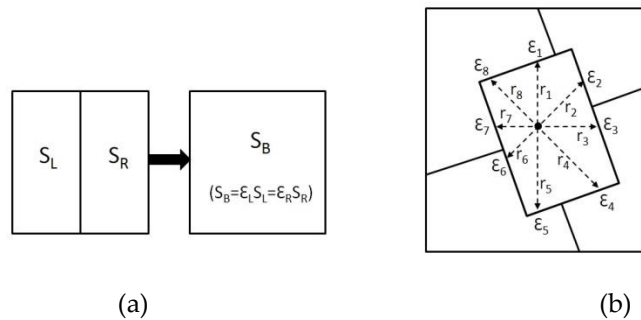


Figure 5. (a) Balancing at boundary by matching two scenes' boundary pixels; (b) rebalancing for any pixel within a scene through octal-direction weighted boundary matching.

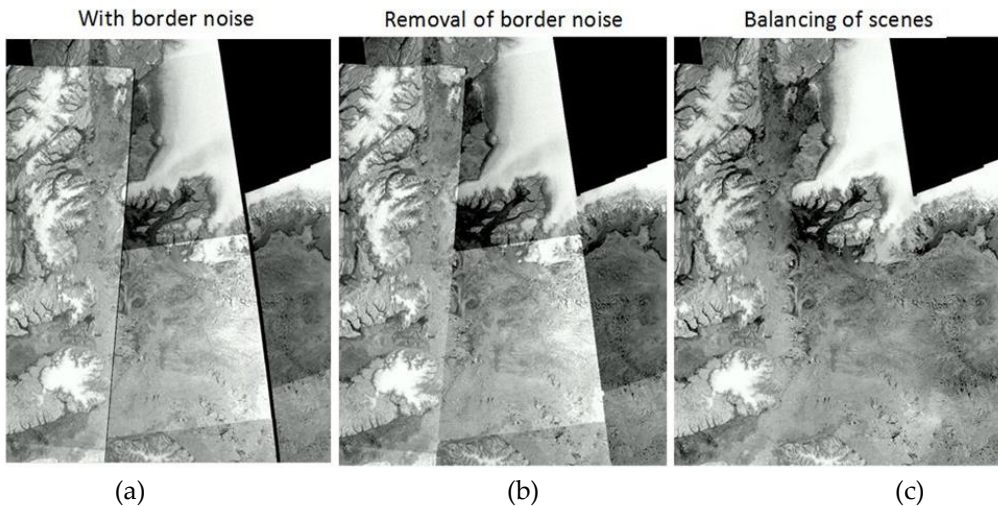


Figure 6. An example of Sentinel-1 mosaic. (a) Mosaic without border noise removal; (b) mosaic after noise removal; (c) mosaic with tone balancing.

115 3. Mosaic results and applications

116 The impacts of border noise and tone difference to a mosaic are displayed in Figure 6a, while
117 the results of noise removal and tone balancing are displayed in Figures 6b and 6c. It is obvious
118 through comparing the three panels in Figure 6 that the methods developed in Section 2 work very
119 well. The dark seams of border noises in Figure 6a are neatly removed in Figure 6b, and then the tone
120 differences in Figure 6b are smoothly balanced in Figure 6c. One of the advantages of mosaic product
121 is its capability to display an extended coverage at either regional or global scale. For example, by
122 mosaicking as many as 450 Sentinel-1 A/B scenes observed in 4 days, a Pan-Arctic view of sea ice can
123 be obtained as shown in Figure 7. Even though it is comprised of hundreds of scenes the overall
124 balancing process performs quite favorably, especially for the land and sea ice coverage. However an
125 issue appears over the open water areas (mainly in the upper-right part), where there are still high-
126 contrast tone differences and non-smooth textures. This complexity is caused by the fact that SAR
127 imaging of open water is very sensitive to radar incident angle as well as local weather conditions
128 such as surface wind speed. Another important application of short-term mosaic product is to trace
129 the ice drift visually or digitally. Five consecutive daily mosaic images over Nares Strait are provided
130 in Figure 8. To increase the revisit frequency both Sentinel-1 A/B and RADARSAT-2 data are
131 collected. Three ice targets (Labeled as 1, 2, and 3 in Figure 8) are identified image by image and the
132 downward ice movement is traced.

133 So far the developed mosaic algorithm and product have been widely used elsewhere, such as
134 in climatology study reported by the CIS in its “Annual Arctic Ice Atlas” [8], and in education
135 program initiated by the CSA “Canada from Space: Giant Floor Map project” [9, 10].
136

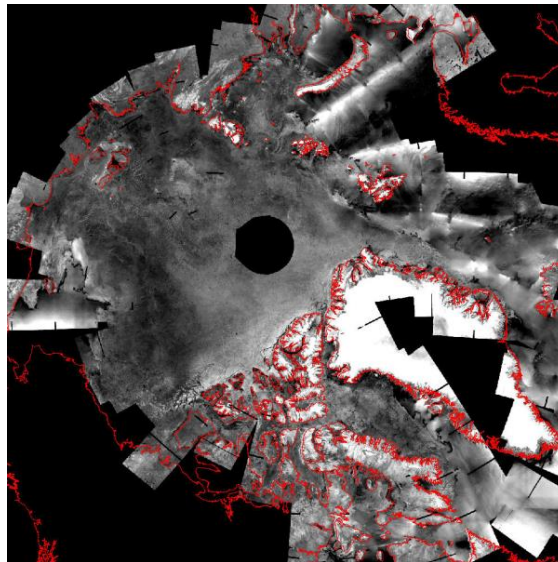


Figure 7. Mosaic of Sentinel-1 A/B. 450 scenes that acquired between Nov 18 and Nov 21, 2017 are used.

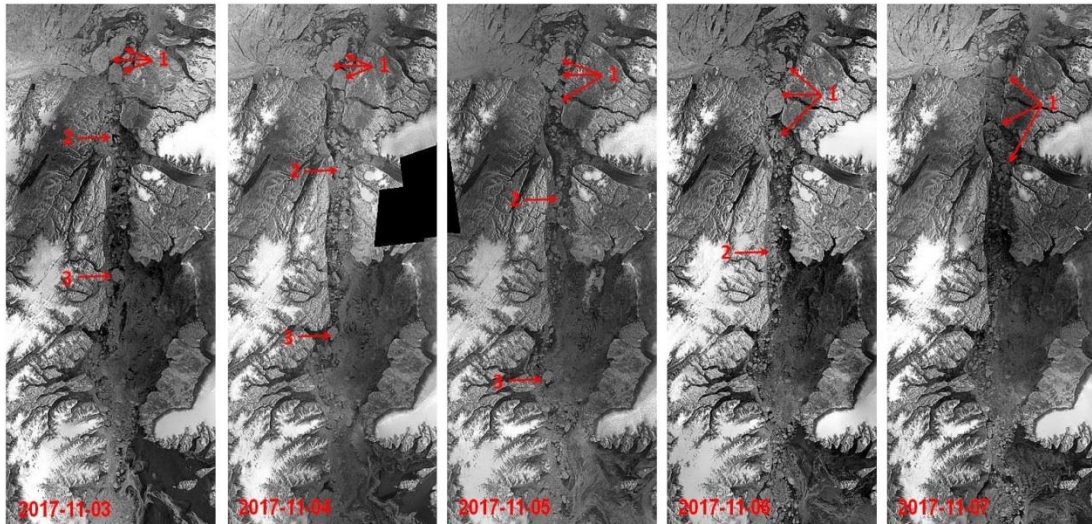


Figure 8. Daily mosaic of combined Sentinel-1 A/B and RADARSAT-2 over Nares Strait.

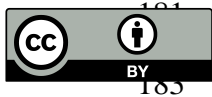
137 5. Concluding remarks

138 The border noise removal algorithm of line-by-line scan has proven to be a feasible and useful
139 tool to improve and perfect the quality of Sentinel-1 data. The seamless and tone-balanced mosaic
140 generation has provided a unique and helpful product for analysts to operationally monitor and
141 analyze sea ice as well as to produce large-scale ice chart. Once more and more SAR data, e.g. the
142 three-satellite RCM, become available, burden of data collection and efficiency of data usage could
143 be a major concern for analysts. A quickly and automatically generated mosaic product with high
144 spatial resolution and extended coverage might be a potential solution. In addition, these short-term
145 mosaic products can also be used as baseline data for further processing where raw data with
146 absolute values are not critical, such as animation of sea ice change and quantification of macroscopic
147 ice drift. A large-scale SAR mosaic product can also be used for data fusion with other satellite
148 imagery, e.g. from optical sensors [11], to benefit from particular advantages of different types of
149 data. In order to meet increasingly demand in automated process and in computer-assisted analysis,
150 the current algorithm and product are absolutely helpful and their continuous improvements are also
151 really necessary.

152 References

- 153 1. Shimada, M.; Itoh, T.; Motohka, T.; Watanabe, M.; Shiraishi, T.; Thapa, R.; Lucas, R. New global forest/non-
154 forest maps from ALOS PALSAR data (2007–2010). *Remote Sensing of Environment* **2014**, 155, 13-31,
155 doi:10.1016/j.rse.2014.04.014.
- 156 2. Zhang, L.; Guo, H.; Liu, G.; Fu, W.; Yan, S.; Song, R.; Ji, P.; Wang, X. SAR China Land Mapping Project:
157 Development, Production and Potential Applications, *IOP Conf. Ser.: Earth Environ. Sci.*, **2014**, 17,
158 doi:10.1088/1755-1315/17/1/012229.
- 159 3. Luo, Y.; De Abreu, R. Operational RADARSAT-2 Image Mosaicking for the Canadian Arctic, 3rd Workshop
160 on RADARSAT-2, Saint-Hubert, Quebec, Canada, September 27, 2010.
- 161 4. RADARSAT Mosaics, Canadian Ice Service, Environment and Climate Change Canada. Available online:
162 [https://www.canada.ca/en/environment-climate-change/services/ice-forecasts-observations/latest-
163 conditions/products-guides/satellite-images-mosaics-animations.html](https://www.canada.ca/en/environment-climate-change/services/ice-forecasts-observations/latest-conditions/products-guides/satellite-images-mosaics-animations.html)
- 164 5. Sentinel Application Platform (SNAP), European Space Agency. Available online:
165 <http://step.esa.int/main/toolboxes/snap/>

- 166 6. Ali, I.; Cao, S.; Naeimi, V.; Paulik, C.; Wagner, W. Methods to remove the border noise from Sentinel-1
167 Synthetic Aperture Radar data: implications and importance for time-series analysis. *IEEE Journal of Selected*
168 *Topics in Applied Earth Observations and Remote Sensing* **2018**, *99*, 1-10, doi: 10.1109/JSTARS.2017.2787650.
- 169 7. Dyatmika, H.S.; Sambodo, K.A.; Budiono, M.E.; Hendayani. Noise removal using thresholding and
170 segmentation for random noise Sentinel-1 data, *IOP Conf. Ser.: Earth Environ. Sci.*, **2017**, *54*, doi:10.1088/1755-
171 1315/54/1/012105.
- 172 8. Annual Arctic Ice Atlas: Winter 2015-2016, Canadian Ice Service. Available online:
173 [https://www.canada.ca/en/environment-climate-change/services/ice-forecasts-](https://www.canada.ca/en/environment-climate-change/services/ice-forecasts-observations/publications/annual-arctic-atlas-winter-2015-2016.html)
174 [observations/publications/annual-arctic-atlas-winter-2015-2016.html](https://www.canada.ca/en/environment-climate-change/services/ice-forecasts-observations/publications/annual-arctic-atlas-winter-2015-2016.html)
- 175 9. Canada from Space, Canadian Space Agency. Available online: [http://www.asc-](http://www.asc-csa.gc.ca/eng/search/images/watch.asp?id=2572)
176 [csa.gc.ca/eng/search/images/watch.asp?id=2572](http://www.asc-csa.gc.ca/eng/search/images/watch.asp?id=2572)
- 177 10. Giant Floor Map: Canada from Space, Canadian Geographic Education. Available online:
178 http://www.canadiangeographic.com/educational_products/canada_from_space_map.asp
- 179 11. Luo, Y.; De Abreu, R. Data fusion of RADARSAT and MODIS images for Arctic sea ice mapping, American
180 Meteorological Society Annual Meeting, Seattle, WA, USA, January 22 - 27, 2011.



© 2018 by the authors; licensee MDPI, Basel, Switzerland. This article is an open access article distributed under the terms and conditions of the Creative Commons Attribution (CC-BY) license (<http://creativecommons.org/licenses/by/4.0/>).