

Proceeding

# Preliminary High-temperature Tests of Textile Reinforced Concrete (TRC) †

Panagiotis Kapsalis<sup>1,2</sup>, Tine Tysmans<sup>1</sup>, Svetlana Verbruggen<sup>1</sup> and Thanasis Triantafillou<sup>2</sup> \*

<sup>1</sup>Dept. of Mechanics of Materials and Constructions, Vrije Universiteit Brussel, Ixelles 1050, Belgium

<sup>2</sup>Department of Civil Engineering, Structural Materials Laboratory, University of Patras, Rio 26504, Greece

Emails: Panagiotis.Kapsalis@vub.be; Tine.Tysmans@vub.be; Svetlana.Verbruggen@vub.be; ttriant@upatras.gr;

\* Correspondence: Panagiotis.Kapsalis@vub.be; Tel.: +32 489180273

† Presented at the 18<sup>th</sup> International Conference on Experimental Mechanics, ICEM18, Brussels, 2018

Published:

**Abstract:** Fire-testing of Textile Reinforced Concrete (TRC) is an interesting field in which quite limited research has been conducted so far. In this paper some preliminary tests are presented, where mortars used as binders are heated to 850 °C and their residual strength is tested, while the Ultrasonic Pulse Velocity (UPV) is also measured, before and after heating, and compared. Additionally, TRC specimens are subjected to flame exposure with a simple set-up and the residual strength is also tested by flexural tests. It is concluded that even with simple set-ups, interesting results can be obtained regarding the structural degradation of the material.

**Keywords:** fire tests; textile reinforced concrete.

---

## 1. Introduction

Textile Reinforced Concrete (TRC) is a composite material which constitutes a novel structural system with enormous potential in construction. The main difference of this system with traditional steel reinforced concrete is that the bulky steel reinforcement has been replaced by lightweight textiles, usually made of glass or carbon fibres. This offers the opportunity to manufacture thin (thus lightweight) structural elements with a high structural performance, since (i) the thick concrete cover is no longer necessary, (ii) the textiles are thinner and lighter than the steel rebars, (iii) the thin fibers have a very high tensile strength.

A possible disadvantage of TRC construction lies on the fact that the thinner elements are less capable to bear the same loads when combined with fire loading. The thin cover and the poor fire behaviour of the commonly used glass fibers in construction lead to a potentially low fire resistance and may become critical in the design of a structural element with fire-safety requirements.

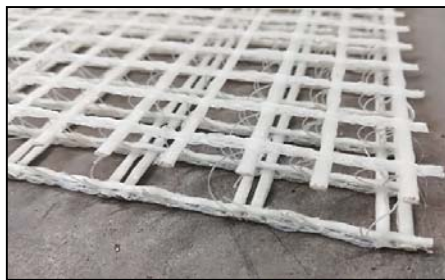
Even though the structural properties of TRC have been widely studied in the past two decades, there is not sufficient knowledge on the fire behaviour. Most of the existing publications on the high-temperature effect on TRC concern the application of TRC on an existing substrate (concrete or masonry) and investigate the effect of temperature on the effectiveness of the strengthening system or the bond between the substrate and the TRC (e.g. [1], [2]). Also, most publications that study the high-temperature effect on TRC, either discuss tests on temperatures lower than 800 °C (e.g. [3]; according to standardized fire curves [4] the temperatures developed in case of a common fire event, exceed 800 °C within 30 minutes of exposure and 1000 °C within 90 minutes of exposure), and/or discuss tests on TRC with non-common types (other than glass or carbon) of fibers for construction (e.g. [5]). The difficulty of performing fire-tests and simulating real fire cases might be one reason for the lack of studies on this topic.

Thus, it is necessary that further work must be done towards testing and evaluating the performance of commonly used TRC under fire loading. This paper presents some preliminary tests of TRC that were performed using simple tools and equipment that is easily available and has the potential to provide useful results with the right set-up.

## 2. Materials and methods

The materials used for this study are commercially available and they are described in this section.

The reinforcement was a three-dimensional, alkali-resistant glass (3D AR-glass) fiber textile (see Figure 2.1). The mesh size differed among the two perpendicular directions and among the two faces, varying between 9 and 18 mm. However, the cross-sectional area of the reinforcement was equal in both faces; 70.5 mm<sup>2</sup> lengthways and 71.6 mm<sup>2</sup> crossways. The weight of the textile before finishing is 917 gr/m<sup>2</sup> and the tensile strength is equal to 1200 MPa, according to the manufacturer. The distance between the two faces is 12 mm.



**Figure 2.1** Three-dimensional AR-glass fiber reinforcement

Two different mortars (M1 and M2) were used, both with very good self-flowing properties (low-viscosity), ideal for casting TRC specimens as they can easily be poured through the 3D reinforcement. They both consist of cement, sand and additives not specified by the manufacturers. The known differences about their composition are the different kind of sand and the different amount of water in the mixture. Specifically, mortar M1 consists of siliceous sand and 1 kg of dry mortar is mixed with 0.15 liters of water, while mortar M2 consists of quartz sand and 1 kg of dry mortar is mixed with 0.13 liters of water.

Two different series of tests have been conducted in this study, so far:

The first test series consists of compression, flexure and Ultrasonic Pulse Velocity (UPV) tests on mortars, before and after heating to 850 °C. The temperature was chosen to be equal to 850 °C, as this is the temperature that corresponds to 30 minutes of exposure to a typical cellulosic fire, according to [4]. The heating was achieved with a small furnace which has the potential to reach temperatures above 1000 °C. The temperature was measured and monitored by the furnace's controller but additional thermocouples to verify the measurements were used as shown in Figure 2.2(a).

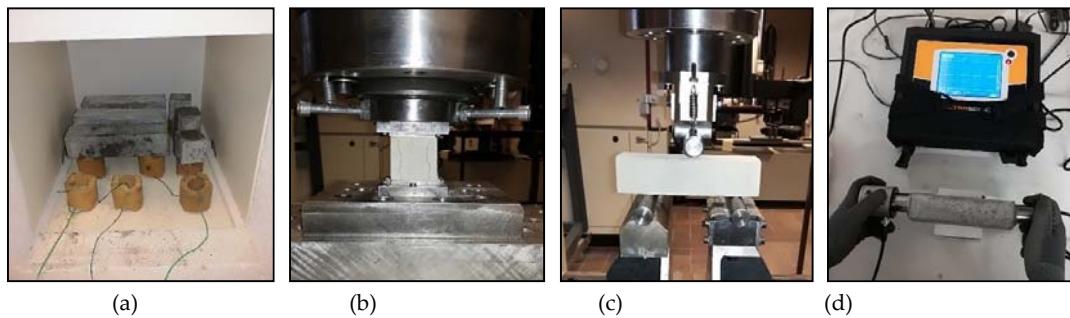
The tests were conducted on cubic (40 mm) and prismatic specimens (160x40x40 mm). Six cubic and six prismatic specimens were made from each mortar, M1 and M2. Three cubes were tested in compression without being exposed to high temperature and three after exposure. Moreover, three prismatic specimens were tested in 3-point bending before and three after exposure to high temperature. UPV measurements were conducted to all specimens (cubes and prisms from M1 and M2) before and after the heat treatment. All these tests are shown in Figure 2.2(b-d).

In the second test series burning tests on tile specimens of TRC were conducted using a simple gas burner. Two tiles 400x400 mm and 22 mm thick were made, one from mortar M1 and one layer of the available 3D textile, and one from mortar M2 and one layer of the same textile. The textile was placed in the middle of the tiles so that the cover was equal to 5 mm in all cases. As seen Figure 2.3(a), the tiles were fixed with a simple set-up on a vertical position and a flame was applied at the center with a gas burner. The temperature was measured using K-type thermocouples, at three different points: (1) at the center of the front face (where the flame was directly applied), (2) at the center of the

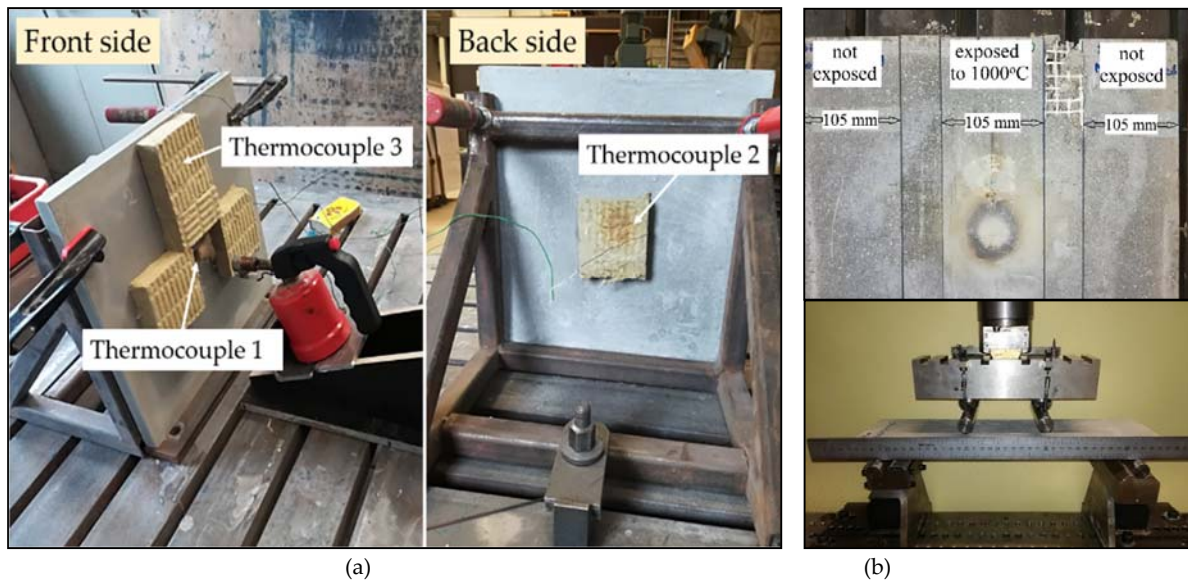
back face and (3) at 160 mm away from the center at the front face. The first thermocouple was exposed directly to the applied flame. The other two were placed in order to measure the temperature of the TRC and thus, they were covered with a flame resistant, thermal insulating product of mineral wool (so that the measurement was not affected by the air temperature). All thermocouples were fixed into position using a fire resistant and highly thermally conductive commercial mortar.

The temperature measurements were read in real-time and, thus, the distance of the gas burner from the tile and the intensity of the flame were adjusted during the test, so that the temperature applied at the center of the front face (on thermocouple 1) would follow the standard cellulosic fire curve, according to EN1363 [4].

After the test was finished, the specimens were left to cool down naturally and one day later three specimens (strips of 105 mm width) were cut from each tile using a diamond saw [see Figure 2.3(b-top)]. One specimen was cut from the center (area exposed to the high temperature) and two specimens were cut from the edges of the tiles (not exposed to high temperature - the temperature did not raise above ambient, according to the measurements obtained from thermocouple 2, which was placed 160 mm away from the center). Those specimens were then subjected to four-point bending tests as shown in Figure 2.3(b-bottom).



**Figure 2.2** Test series 1; (a) Specimens and thermocouples inside the furnace; (b) compression tests on cubic specimens; (c) three-point bending tests on prismatic specimens; (d) UPV measurement



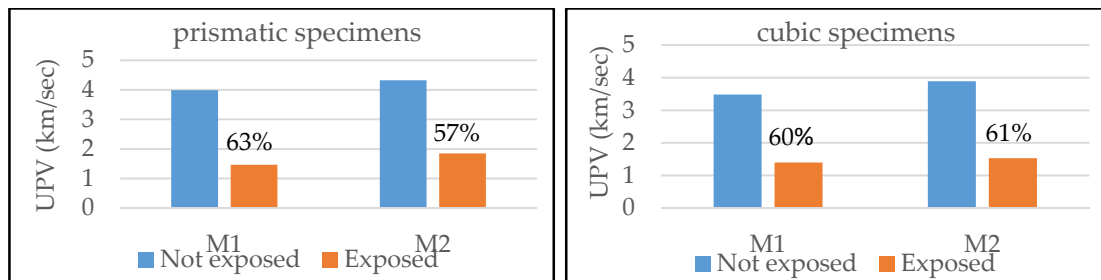
**Figure 2.3** (a) Set-up of gas-burning tests on TRC tiles; (b-top) Three specimens cut from each tile, after the fire-exposure; (b-bottom) Four-point bending tests on specimens cut from the tiles

### 3. Results and discussion

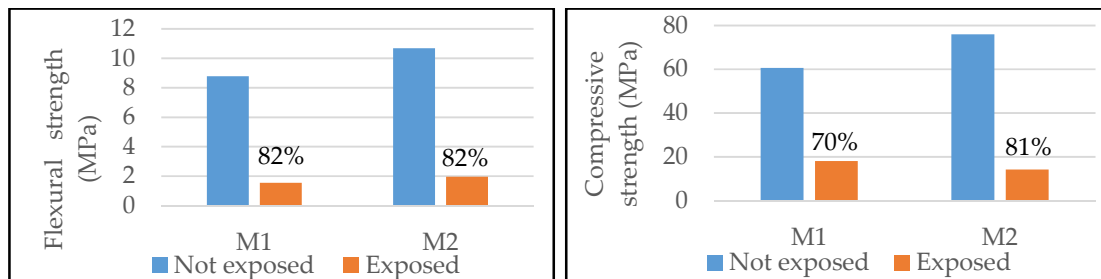
#### 3.1. High temperature effect on mortars

Hereby, the results from the first series of tests are presented. Figure 3.1 gives the results of the UPV measured from all cubic and prismatic specimens. Each bar represents the average value of three identical specimens. It is clear that the decrease of the UPV is approximately equal to 60% in both mortars, but the point of interest is the residual strength of the material. However, the authors did not manage to find a predictive model in current literature that would relate the UPV value to the expected compressive strength of mortars with the same characteristics. As shown in [6], characteristics such as cement type, aggregates type, maximum grain size, water to cement ratio and additives play a significant role in the correlation between the UPV value and the elastic properties and strength of concrete. Thus, a different calibration curve needs to be defined for each case. There is, nonetheless, a clear indication about the degradation of the mortars.

In Figure 3.2 it is observed that the loss of strength (compressive and flexural) varies between 70% and 82%, which is considered rather severe. It is, therefore, expected that in a case of a real fire, where the heating rate is much faster in the first minutes (20 °C to 530 °C in 3 minutes, which could not be reproduced by the furnace that was used for these tests) and for an exposure longer than 30 minutes (which means temperature higher than 850 °C) the degradation of the mortar will probably be too severe. Of course, further tests, need to be done, with more representative conditions.



**Figure 3.1** Ultrasonic Pulse Velocity measured on specimens of mortars M1 and M2, before and after exposure to 850°C. Comparisons and percentages of decrease.



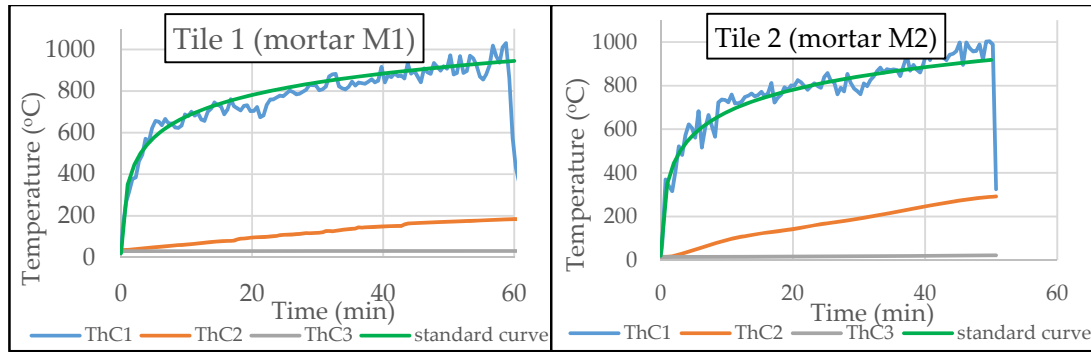
**Figure 3.2** Compression and three-point bending test results of mortars M1 and M2, before and after exposure to 850°C. Comparisons and percentages of decrease.

#### 3.2. Fire testing effect on TRC

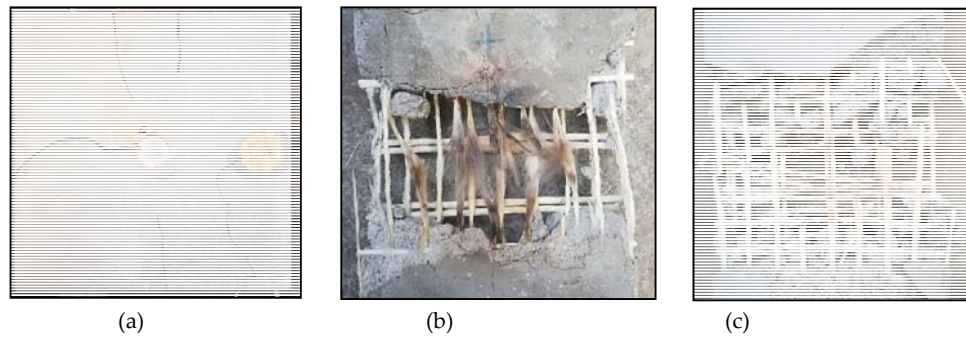
In the following Figure 3.3, the recordings measured from the thermocouples during the flame-exposure tests on Tile 1 and Tile 2 are given. What can be observed is that even with this simple set-up the standard fire curve [4] could be simulated quite accurately (although only at a narrow area at the center of the tiles). It is also observed that the temperature measured by thermocouple 2 (ThC2, center of back face) is almost parallel to the temperature applied at the center of the front face, and it is quite important to note that the difference between ThC1 and ThC2 varies between the two mortars; it is close to 750 °C for mortar M1 and close to 600 °C for M2. Therefore, mortar M1 is less thermally

conductive, even though they both present a relatively low thermal conductivity (temperature difference in the order of 600-800°C by a thickness of only 22 mm).

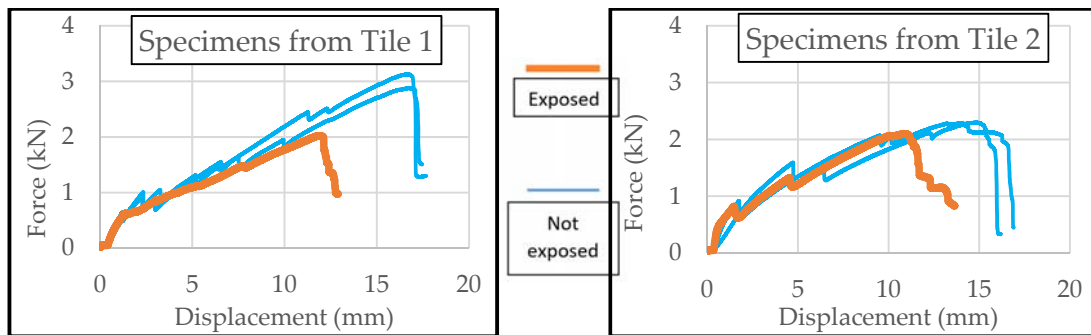
What was also observed on the two tiles is that cracks were formed, as marked on Figure 3.4(a). All cracks were propagating to the center. The damage of the fibers near the central area where the flame was applied is visible in Figure 3.4(b-c). It should be noted that the textiles were revealed by removing the mortar after testing the specimens in four-point bending. The results of the bending tests on exposed and not-exposed specimens are shown in Figure 3.5.



**Figure 3.3** Recordings of thermocouples 1,2 and 3 (ThC1, ThC2, ThC3 respectively) during the flame-exposure testing of the tiles; comparison with standard fire curve [4]



**Figure 3.4** (a) Cracking of the tiles exposed to a flame at their center; (b-c) Damage of the glass textiles due to fire exposure for tiles 1 and 2, respectively



**Figure 3.5** Force displacement curves obtained from four-point testing of specimens cut from Tiles 1 & 2.

As seen at the graphs presented in Figure 3.5, the maximum load and displacement of the fire exposed specimens, has decreased more significantly for the tile specimen of mortar M1. It is also observed from Figure 3.4 that the fibers of the specimen from tile 1 seem more damaged than those of the specimen from tile 2. This, however, comes in contradiction with the observation that the thermal conductivity of mortar M1 is less than the one of M2. In that case, since the cover thickness is the same, less damage on tile 1 should be expected. However, no firm conclusions can be reached

from such a small number of specimens. Some useful indications can be obtained with simple tests like these, but further investigation is absolutely necessary.

#### 4. Conclusions – Future work

From the discussion of the results presented above, it can be concluded that:

- Extremely costly equipment is not always necessary to perform fire tests, but, at least for preliminary tests, interesting and useful results can be obtained with simple set-ups like the ones presented hereby, as long as an adequate number of specimens are tested.
- Fine grained mortars, as the ones described here, have a thermal conductivity that may provide a drop in temperature equal to 600-750 °C, in a member of only 22 mm thick.

It is also proposed that further investigations should be conducted towards:

- Mechanical performance of TRC specimens, before and after being subjected to fire-loading (with simple and more complicated set-ups). Parameters such as the cover thickness, the type of fibers and the time/temperature of exposure to fire, should also be taken into consideration.
- Calibration of curves that correlate the Ultrasonic Pulse Velocity measured on fine grained mortars commonly used for TRC elements, with the compressive and flexural strength of the mortars.

**Acknowledgments:** The authors gratefully acknowledge Agentschap voor Innovatie en Ondernemen (VLAIO) for funding the research and all the members of the 'CeComStruct' project, of which this research is part of, for their advice.

**Author Contributions:** All authors contributed substantially for the authorship of this paper. The experiments were conceived by Tine Tysmans and Panagiotis Kapsalis. Svetlana Verbruggen and Panagiotis Kapsalis designed and performed the tests while all authors contributed with suggestions for the analysis of the results and corrections on the manuscript that was written by Panagiotis Kapsalis.

#### References

1. S.H. Daniel Ehlig. Reinforced Concrete Slabs Strengthened with Textile Reinforced Concrete Subjected to Fire. *2nd Int. RILEM Work. Concrete spalling due to fire Exposure*, **2011**, pp. 419–426.
2. S.R. Maroudas and C.G. Papanicolaou. Effect of High Temperatures on the TRM-to- Masonry Bond. *Key Engin. Mater.* **2017**, vol. 747, pp. 533–541.
3. F.D.A. Silva, M. Butler, S. Hempel, R.D. Toledo Filho, and V. Mechtcherine. Effects of elevated temperatures on the interface properties of carbon textile-reinforced concrete. *Cem. and Conc. Compos.*, **2014**, vol. 48, pp. 26–34.
4. EN 1363-1:1999, Fire resistance tests. General requirements
5. D.A. Strauss Rambo, F.De Andrade Silva, R.D. Toledo Filho, N. Ukrainczyk, and E. Koenders. Tensile strength of a calcium-aluminate cementitious composite reinforced with basalt textile in a high-temperature environment. *Cem. and Conc. Compos.*, **2016**, vol. 70, pp. 183–193.
6. G. Trtnik, F. Kavcic, G. Turk. Prediction of concrete strength using ultrasonic pulse velocity and artificial neural networks. *Ultrasonics*, 2009, vol. 46, pp. 53-60.