

Performance Evaluation and Interference Characterization of Wireless Sensor Networks for Complex High-Node Density Scenarios

Mikel Celaya-Echarri ¹, Leyre Azpilicueta ^{1,*}, Peio López-Iturri ², Erik Aguirre ², Francisco Falcone ²

¹ School of Engineering and Sciences, Tecnológico de Monterrey, Monterrey, Mexico; mikelcelaya@gmail.com; leyre.azpilicueta@itesm.mx.

² Electrical and Electronic Engineering Dept, Public University of Navarre, Pamplona, Navarra, Spain; peio.lopez@unavarra.es; erik.aguirre@unavarra.es; francisco.falcone@unavarra.es;

* Correspondence: leyre.azpilicueta@itesm.mx; Tel.: +52 81582082; fax: +52 8183597211

† Presented at the 5th International Electronic Conference on Sensors and Applications, 15–30 November 2018; Available online: <https://sciforum.net/conference/ecsa-5>.

Abstract: The uncontrollable future development of Smart regions, as a set of Smart cities' networks assembled, is directly associated with a growing demand of full interactive and connected ubiquitous smart environments. To achieve this global connection goal, large number of transceivers and multiple wireless systems will be involved to provide user services and applications (i.e. Ambient Assisted Living, emergency situations, e-health monitoring or Intelligent Transportation Systems) anytime and anyplace, regardless the devices, networks or systems, they use. Adequate, efficient and effective radio wave propagation tools, methodologies and analyses in complex environments (indoor and outdoor) are crucially required to prevent communication limitations such as coverage, capacity or speed or channel interferences due to nodes' density or channel restrictions. In this work, radio wave propagation characterization in an urban indoor and outdoor environment, at ISM 2.4GHz and 5GHz Wireless Sensor Networks (WSNs), has been assessed. The selected scenario is an auditorium placed in a city free open area surrounded by inhomogeneous vegetation. User density within the scenario, in terms of inherent transceivers density, poses challenges in overall system operation, given by multiple node operation which increases overall interference levels. By means of an in-house developed 3D ray launching algorithm, the impact of variable density wireless sensor network operation within this complex scenario is presented. This analysis and the proposed simulation methodology, can lead in an adequate interference characterization, considering conventional transceivers as well as wearables, which provide suitable information for the overall network performance in complex crowded indoor and outdoor scenarios.

Keywords: Wireless Sensor Networks; interference characterization; performance evaluation; 3D Ray Launching; high-node density; Smart Cities

1. Introduction

The notion of a Smart World, with the aid of Smart Devices, Smartphones, Smart Cars, Smart Homes, Smart Cities, and the paradigm of Smart Everything, has been a vigorously research topic for many years. This concept holds the view that people and the world itself will be overlaid with sensing and actuation, with the aid of the Internet of Things (IoT). Nowadays, IoT has been used in a large number of areas, such as government, industry and academia [1], for different applications. For example, sensors placed in buildings for attempting to save energy [2-3]; wireless sensor networks (WSNs) in vehicular communications trying to improve safety and transportation [4]; home

automation [5]; industry [6] or e-Health services which are relying on increased home sensing to support remote medicine and wellness [7].

Nowadays, more than half of the world's population lives in cities [8] with more than six devices per person connected to the Internet [9]. That means that billions of devices will be connected by 2020 to build a smart city, which can range from end-user devices or wearables to vehicular communication systems, water and gas monitoring, smart lightning, structural monitoring or smart healthcare systems, among others [10].

These solutions require a high density of nodes, which in turn requires smaller outdoor and indoor cells, leading to Heterogeneous Networks (HetNet). For the successful implementation of such dense deployments, reliable and accurate radio frequency channel models are necessary, addressing the different topologies and radio links to get reliable service coverage and capacity, as well as interference management. Furthermore, hot spots have a non-uniform traffic demand, so it is necessary to have three-dimensional (3D) realistic environments to achieve precise models in order to improve network performance. In this work, we present a deterministic technique to model electromagnetic propagation in a high-node density scenario, specifically an in-house developed 3D Ray-Launching (3D-RL) algorithm, based on Geometrical Optics (GO), Geometrical Theory of Diffraction (GTD) and its extension the Uniform Theory of Diffraction (UTD). The detailed operating mode of the algorithm has been previously published [11] and validated in complex urban environments [12].

The remaining parts of the paper are outlined as follow: the scenario description with the modeling and simulation approach is explained in Section 2. Section 3 presents the wireless network performance analysis for the high-node density considered scenario through the Received Signal Strength (RSS), Signal to Noise Ratio (SNR) and constellation plots results, at ISM 2.4GHz and 5GHz frequency bands. Conclusions and future work are summarized in Section 4.

2. Scenario Description

This section describes the modeled urban scenario, which is an auditorium placed in a free open area surrounded by inhomogeneous vegetation. This recently built infrastructure is part of Tecnológico de Monterrey's campus in Monterrey, Mexico. Figure 1a presents the real view of the auditorium and Figure 1b the rendered view of the corresponding scenario for simulation.

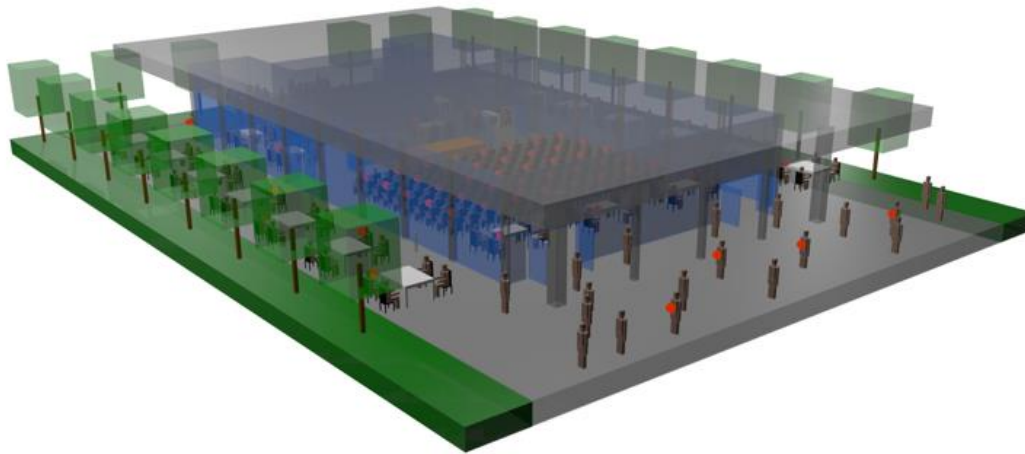
User density within the scenario, in terms of inherent transceivers density, has been performed by simulation. The considered scenario has a user capacity of 150 persons within the auditorium, and approximately 40 more, when all the tables around the building are occupied. Thus, for a high-node density within the complete scenario, it has been considered that one in four people has a wearable that can increase overall interference levels, which lead to a sensor network of 75 wearables. A medium node density case has been considered for 38 wearables (one in eight people), and a low node density study case for 19 wearables (one in 16 people). All the wearables have been analyzed at 1.2 meters height, emulating smart glasses in the case of seated people, or smart watches in standing people. Two frequencies have been selected for this analysis, 2.4GHz and 5.8GHz, which corresponds with the most currently used for IoT solutions. Simulation parameters are summarized in Table 1.

Table 1. Simulation parameters.

| Parameters | Values |
|--|---------------------------------------|
| Wearable TX Power | 4dBm |
| Frequency | 2.4GHz / 5.8GHz |
| Bit Rate | 250Kbps / 1Mbps |
| Antenna Type (RX, TX) / Gain | Monopole / 0dB |
| 3D Ray Tracing: antenna resolution /Rebounds | 1 degree / 6 |
| Scenario size /Unitary volume analysis | (50×37×8)m / 1m ³ (1×1×1)m |



(a)



(b)

Figure 1: Urban considered scenario where, (a) is the real view of the auditorium placed in Campus Monterrey, Tecnológico de Monterrey (retrieved from: <http://www.rdlparquitectos.com/es/proyectos/pabellon-la-carreta/>), (b) is the 3D aerial rendered view for simulation.

3. Results

3.1 Received Signal Strength (RSS)

First, the received power for all the spatial points within the scenario has been analyzed. Hence, the Received Signal Strength (RSS) for the complete volume of the scenario has been calculated by means of the proposed 3D-RL tool. Figure 2 shows the received power bi-dimensional planes for the high-node density case, at both frequencies. It can be seen that the morphology and topology of the scenario has a great impact in radio wave propagation. The auditorium area where higher concentration of people is presented, has also a higher concentration of received power, being more remarkable in the case of 2.4GHz frequency. The higher intensity in this area is given by the body shielding, which block and concentrate the signal in the people's proximity inside the auditorium. Thus, crowded areas tend to increase the body shielding effect, and at the same time, the signal concentration. It is also noticeable the outdoor-indoor propagation, showing that in both cases, radio wave propagation in the outdoor area reaches higher levels. Frequency also plays an important role in a high-density WSN, showing that higher power levels are received at lower frequencies.

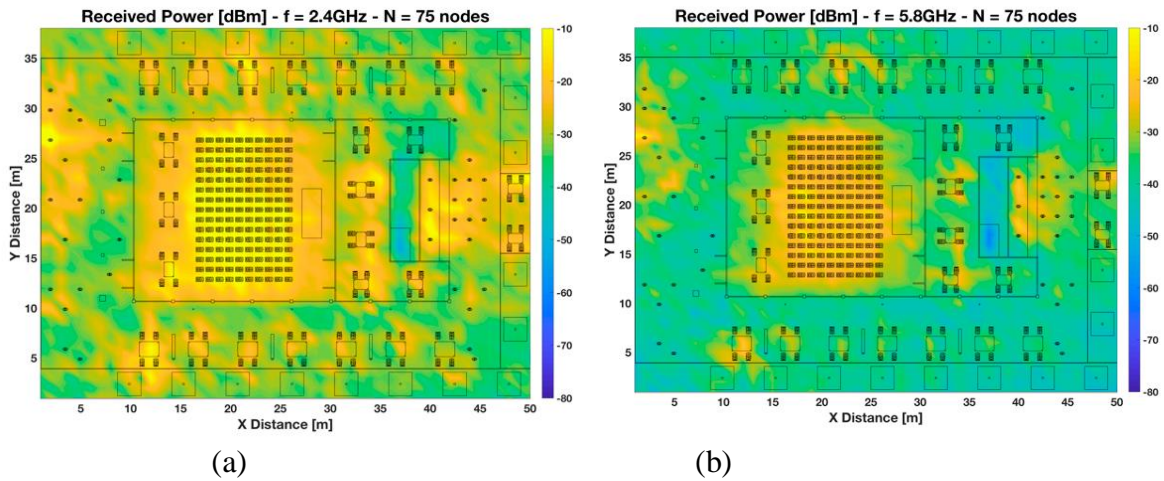


Figure 2: Bi-dimensional planes of Received Power [dBm] for 1.2m height for the high-node density scenario, (a) 2.4GHz frequency, (b) 5.8GHz frequency.

3.2 Signal to Noise Ratio (SNR)

In order to have insight into the interference levels in the proposed sensor network, Signal to Noise Ratio (SNR) volumetric estimations have been obtained considering ZigBee devices, at 2.4GHz frequency and 3MHz bandwidth. Figure 3 shows the SNR distribution comparison, represented by bi-dimensional plots at 1.2 meters, for a transmitter placed inside the auditorium, considering a high-sensors density (75 nodes) and a low-sensors density (19 nodes), non-uniformly distributed in the scenario, as interferers. These plots represent an upper bound in terms of quality degradation due to simultaneous operation of other transceivers (i.e., the SNR results show the worst case, when all considered interferers are transmitting at the same time). The provided SNR values can be mapped afterwards to E_b/N_0 ratios, where modulation scheme as well as transmission bit rate can be explicitly considered.

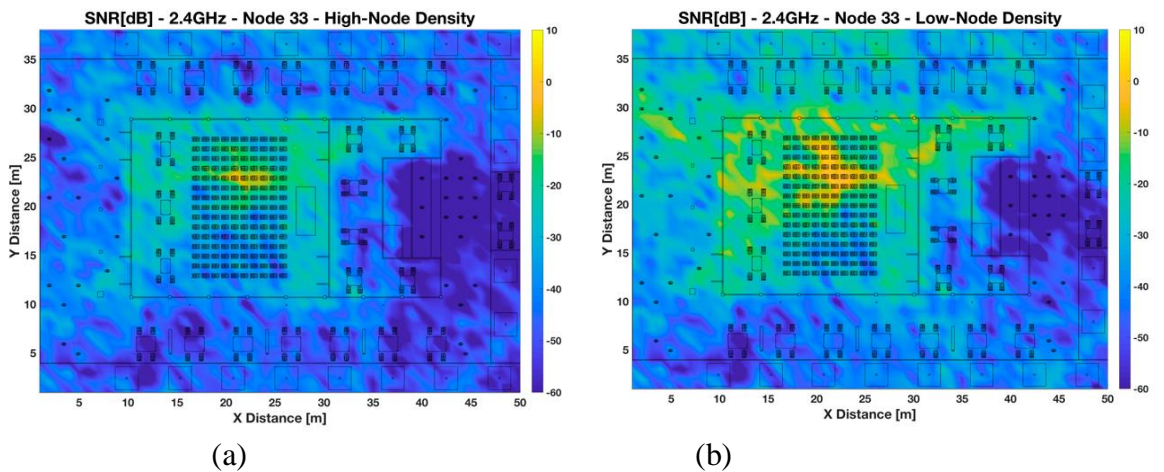


Figure 3: Bi-dimensional planes of SNR [dB] for 1.2m height for 2.4GHz ZigBee sensor network, (a) high-node density scenario, (b) low-node density scenario.

3.3 Performance Analysis

Coverage estimations can aid in the estimation of indoor and outdoor coverage in the simulation scenario. However, since coverage and capacity are linked, it is mandatory to analyze the influence of modulation in order to determine system performance. As stated before, a ZigBee sensor network has been considered, which uses Offset-Quadrature-Phase-Shift-Keying (O-QPSK) modulation, with a bit rate of 250Kbps. Figure 4 presents the constellation plots for the same previously analyzed transmitter (placed inside the auditorium), considering high-node and low-node density. As it was expected, it can be clearly seen that the symbols are more disperse in the high-node density case. To

have insight into the total interference, the Error Vector Magnitude (EVM) is directly linked to the percentage of error that is tolerable as a function of modulation complexity. Thus, the EVM has been calculated for this specific position, throwing values of 43% for the high-node density case and 35% for the low-node density case. As an expected conclusion, higher density of nodes produces higher interference levels, and therefore, the performance of the system decreases. These performance results can predict in advance the network challenges, showing general and specific trends, which can lead to better knowledge and design of wireless communication systems.

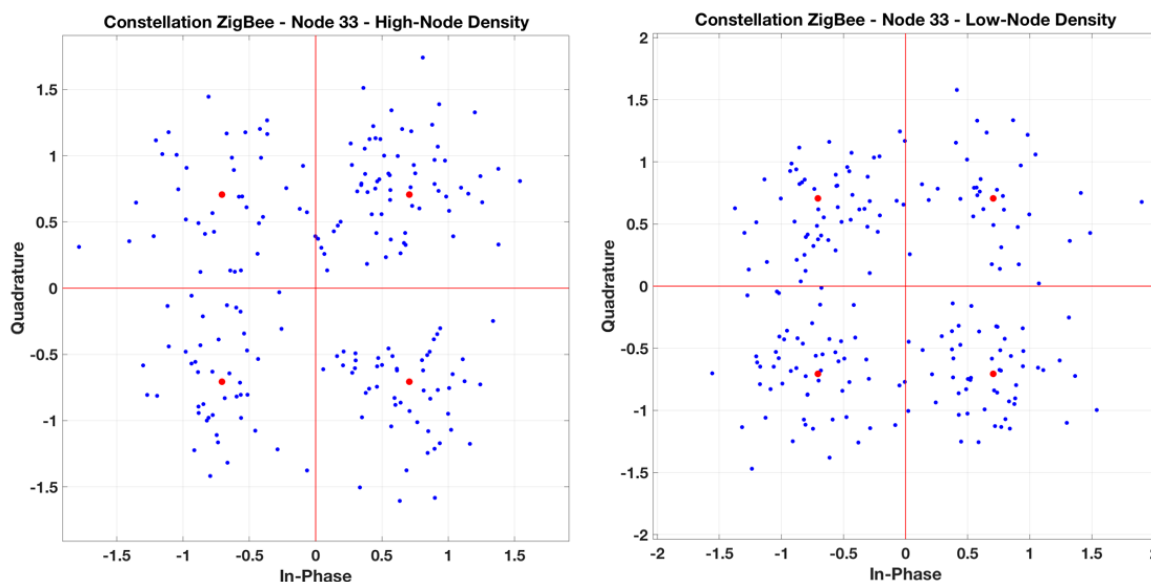


Figure 4: In Phase and Quadrature representation for a node within the auditorium for O-QPSK modulation, (a) high-node density scenario, (b) low-node density scenario.

4. Conclusions and future work

In this work, a preliminary evaluation of a high-node density mesh network has been addressed. An in-house developed deterministic 3D-RL algorithm has been used to analyze the behavior of the wireless system. An urban micro environment has been selected, which corresponds with an auditorium placed in a city free open area surrounded by inhomogeneous vegetation. Received signal power as well as the behavior of the O-QPSK modulation constellation of a ZigBee system have been calculated, showing the effect of degradation when increasing interference in the system. The placement of the sensors, individually as well as mesh set, is a fundamental parameter in order to evaluate the coverage levels as well as the quality evaluation as a function of SNR. The use of coverage as well as system information provides useful knowledge of the network performance, especially when the number of sensors increases in a high-nodes density scenario. This analysis and the proposed simulation methodology, can lead in an adequate interference characterization, considering conventional transceivers as well as wearables, which provide suitable information for the overall network performance in complex crowded indoor and outdoor scenarios. Future work will consist in a deeper analysis of the network parameters as well as coverage/capacity analysis for different wireless systems, presenting a comparison between 2.4GHz and 5.8GHz frequencies. The Quality of Service can also be characterized, as well as outage probability.

Acknowledgments: The authors would like to acknowledge the support and collaboration of the Focus Group of Telecommunications and Networks at Tecnológico de Monterrey.

Author Contributions: Mikel Celaya-Echarri and Leyre Azpilicueta conducted the simulation and analysis of wireless propagation phenomena and scenario impact. Peio Lopez-Iturri, Erik Aguirre

and Francisco Falcone conceived and prepared the wireless sensor network design and performance analysis. Mikel Celaya-Echarri and Leyre Azpilicueta prepared the manuscript.

Conflicts of Interest: The authors declare no conflict of interest. The statements made herein are solely the responsibility of the authors.

References

1. Stankovic, J. A. Research Directions for the Internet of Things. *IEEE Internet of Things Journal*, vol. 1, no. 1, pp. 3-9, Feb. 2014.
2. Bradshaw, V. *The Building Environment: Active and Passive Control Systems*. River Street. NJ, USA: Wiley, 2006.
3. Zeiler, W.; Houten, R.; Boxem, G.; Vissers, D.; Maaijen, R. Indoor air quality and thermal comfort strategies: The human-in-the-loop approach. *Proc. Int. Conf. Enhanced Building Oper. (ICEBO'11)*, 2011.
4. [Online]. Available: <http://www.phonearena.com/news/Androids-Google-Playbeats-App-Store-with-over-1-million-apps-now-officiallylargestid45680>.
5. Control4 Home Automation and Control [Online]. Available: <http://www.control4.com>.
6. M1 Security and Automation Controls [Online]. Available: <http://www.elkproducts.com/m1controls.html>
7. Dickerson, R.; Gorlin, E.; Stankovic, J. Empath: A continuous remote emotional health monitoring system for depressive illness. *Proc. Wireless Health*, 2011.
8. World's Population Increasingly Urban With More Than Half Living in Urban Areas, United Nat., New York, NY, USA, 2014, Accessed Dec. 2016. [Online]. Available: <http://www.un.org/en/development/desa/news/population/world-urbanization-prospects-2014.html>
9. D. Evans. (2011). *The Internet of Things: How the Next Evolution of the Internet Is Changing Everything*. [Online]. Available: http://www.cisco.com/c/dam/en_us/about/ac79/docs/innov/IoT_IBSG_0411FINAL.pdf
10. Gharaibeh, A. *et al.* Smart Cities: A Survey on Data Management, Security, and Enabling Technologies. *IEEE Communications Surveys & Tutorials*, vol. 19, no. 4, pp. 2456-2501, Fourthquarter 2017.
11. Azpilicueta, L.; Rawat, M.; Rawat, K.; Ghannouchi, F.; Falcone, F. Convergence analysis in deterministic 3D ray launching radio channel estimation in complex environments. *Appl. Comput. Electromagn. Soc. J.* 2014, 29, 256–271.
12. Azpilicueta, L.; Vargas-Rosales, C.; Falcone, F. Deterministic Propagation Prediction in Transportation Systems. *IEEE Veh. Technol. Mag.* 2016, 11, 29–37.



© 2018 by the authors. Submitted for possible open access publication under the terms and conditions of the Creative Commons Attribution (CC BY) license (<http://creativecommons.org/licenses/by/4.0/>).