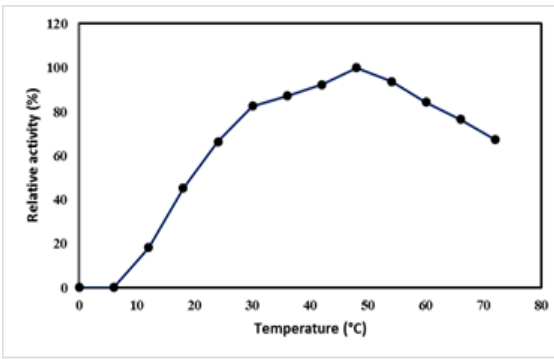
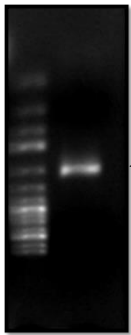


Effect of the cultivation period on the protease activity from *Bacillus* sp. i51

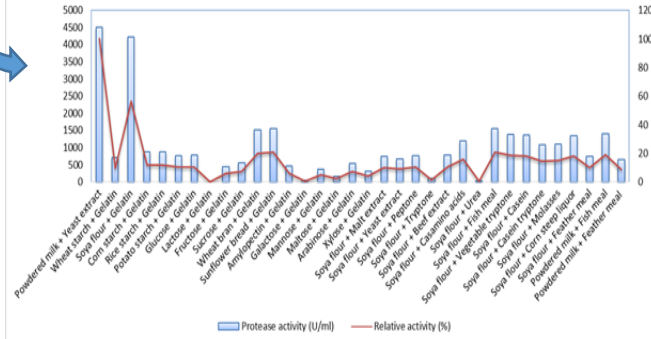


PCR amplification of the gene encoding the ARNr 16S

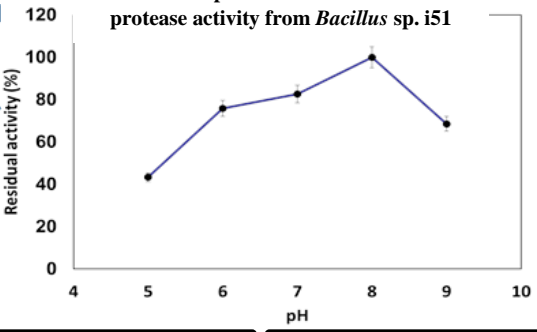


1.5 kb

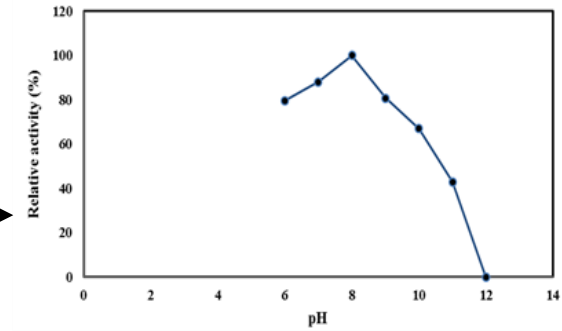
Effect of the combination of different carbon and nitrogen sources on the protease activity from *Bacillus* sp. i51



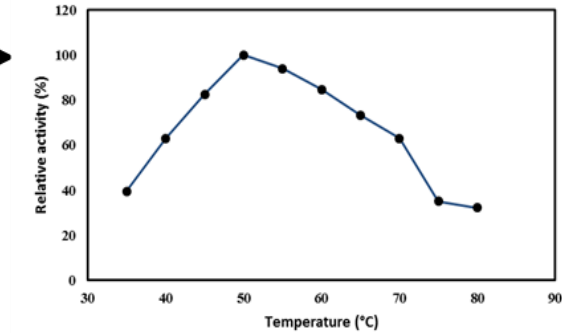
Effect of pH of the culture on the protease activity from *Bacillus* sp. i51



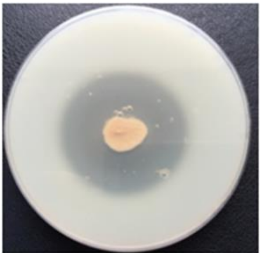
Effect of pH on the protease activity from *Bacillus* sp. i51



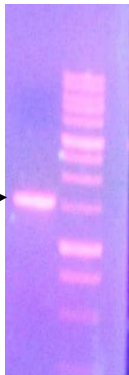
Effect of temperature on the protease activity from *Bacillus* sp. i51



Casein hydrolysis seen as zone of clearance around colonies on nutrient agar milk media



PCR amplification of the mature protease gene from *Bacillus* sp. i51



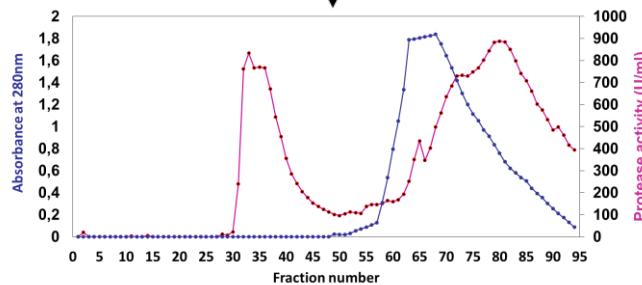
1.5 kb

SDS-PAGE analysis of the protease from *Bacillus* sp. i51



32 kb

Sephacryl S-200 High Resolution size exclusion chromatography



Protease activity (U/ml)