

# 6th International Electronic Conference on Sensors and Applications

15 – 30 November 2019

## Dynamic Monitoring of Multi-Concentrated Silica Nanoparticles Colloidal Environment with Optical Fiber Sensor

**Marco César Prado Soares**, Matheus Santos Rodrigues, Egont Alexandre Schenkel,  
Willian Hideak Arita Silva, Gabriel Perli, Matheus Kauê Gomes, Eric Fujiwara and  
Carlos Kenichi Suzuki

School of Mechanical Engineering, University of Campinas, SP, Brazil



# 1. Introduction – Colloidal Suspensions

## Dispersed phase

+

## Base fluids

- Metal:
    - Cu, Al, Ag, Fe;
  - Ceramics and non-metallic solids:
    - $\text{Al}_2\text{O}_3$ , CuO,  $\text{SiO}_2$ , Si;
  - Biomolecules;
  - Polymeric particles.
- Water;
  - Engine Oil;
  - Organic solvents.

Li *et al.*, 2008



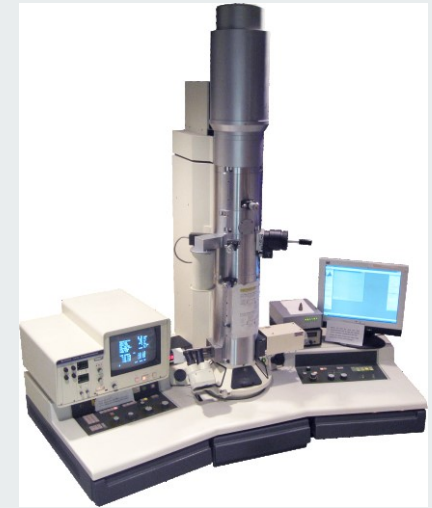
# 1. Introduction – Traditional Approaches for Colloidal Characterization

- Evaluation of particles size, morphology and concentration by laboratory techniques, such as:

- Transmission Microscopy (TEM);
- Scanning Electronic Microscopy (SEM);
- Zeta potential measurements.

Electron

- Expensive and time consuming;
- Sample preparation;
- Difficulties in calibration.



TEM Equipment



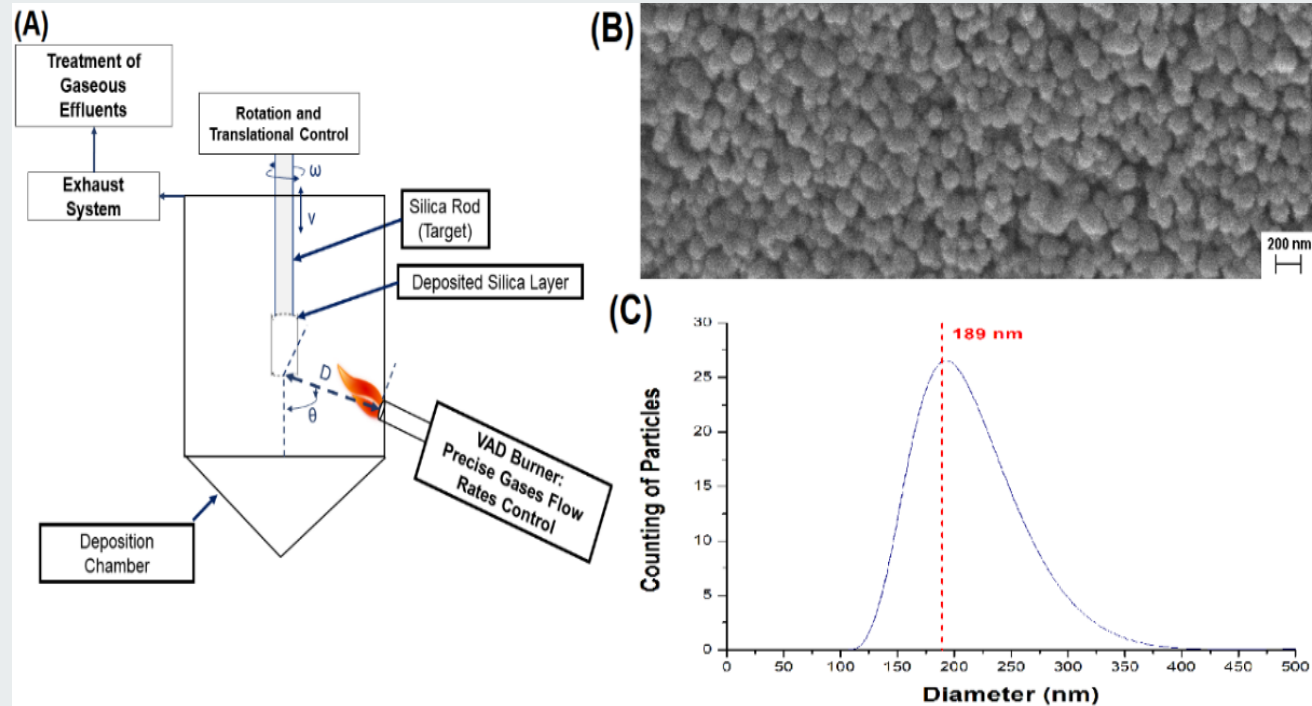
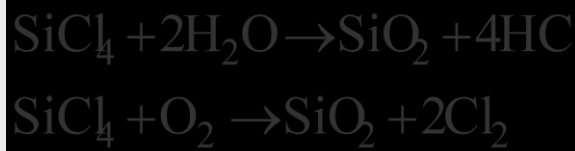
## 2. Our Approach – Assessment with Optical Fiber Sensor

- Compact size;
- Immunity to electromagnetic interference;
- Chemically and biologically inert;
- Easy calibration;
- Fast sample preparation – **dispersion of particles in water, with sonication;**
- Easy data processing.



## 2. Preparation of Silica

- Method of Vapor-phase axial deposition (VAD);
- High deposition rate;
- Particle size control.



(A) Schematics of the VAD system; (B) SEM image; (C) Size distribution of particles (average diameter of 189 nm).

Soares *et al.*, *Mat. Res.*, 2018



## 2. Optical Fiber Sensor

- Based on Quasi-Elastic Light Scattering (QELS);
- QELS is produced when particles are hit by light with wavelength comparable to their dimensions;
- From the  $I_R$  signal it is possible to calculate the **autocorrelation of the intensity, which is related to the concentration and dimensions** by Siegert relation:

$$G_2(\tau) = A + Be^{-2\Gamma_m\tau}$$

Where  $A$  is the baseline,  $B$  is the coherence factor, and  $\Gamma_m$  is the average decay rate. According to the **Stokes-Einstein** equation:

$$\Gamma_m = Dq^2$$

In which  $D$  is the translational diffusion coefficient and  $q$  is the magnitude of light scattering vector.



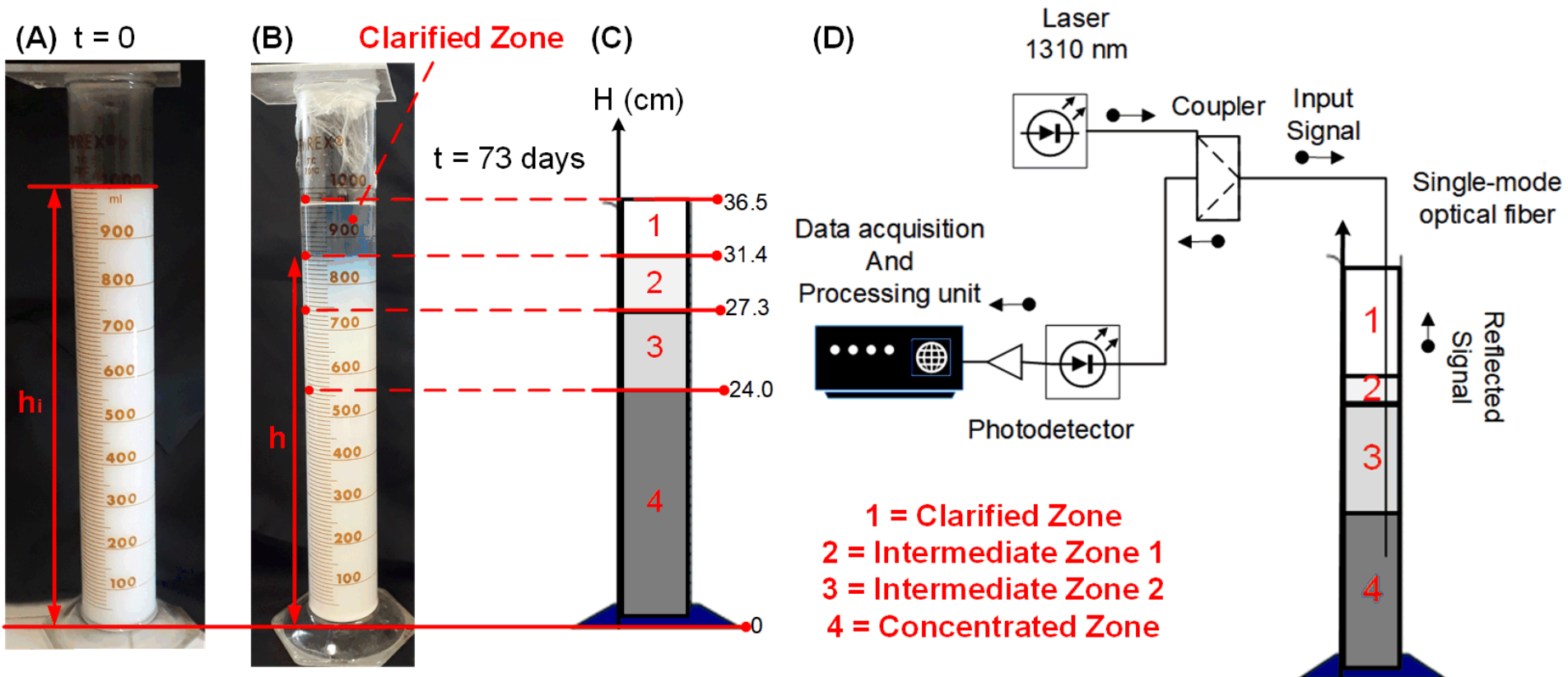
## 2. Assessment of Colloidal Concentration

- Colloidal suspensions produced by dispersing the silica nanoparticles in DI water, followed by mixing and sonication during 180 min: **1% (m/m) silica suspension**;
- Two (1000 mL)-test tubes were filled with the suspensions and left in rest so the particles could slowly sediment, creating a **clarified zone on the top of the flask, a concentrated zone on the bottom, and zones with intermediate concentration**;
- The sensor response for the probe immersed in the regions of different concentrations was evaluated ( $\sim 25^\circ\text{C}$ );
- The initial value of the height  $h(t)$  from the bottom of the tube to the beginning of the clarified zone is  $h_i$  and the initial concentration of particles is  $C_i$  (mass/volume). If the concentration in the clarified zone is negligible, **the estimated concentration  $C(t)$  on the bottom zone is:**

$$C = \frac{h_i}{h} C_i$$



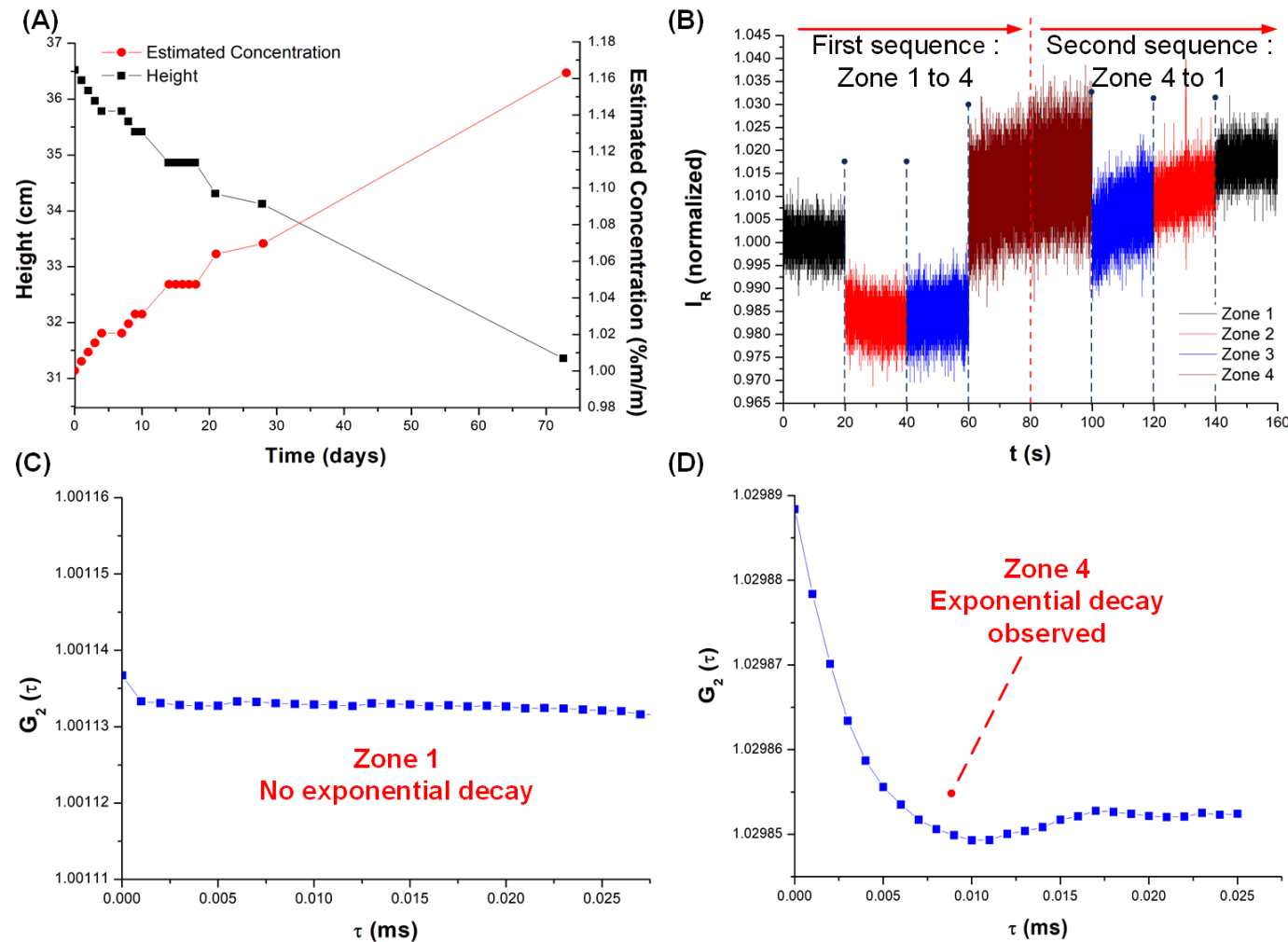
## 2. Assessment of Colloidal Concentration







## 4. Results and Discussion



(A) Average values of the heights verified for the two tubes and concentrations estimated from Equation 3 (secondary vertical axis); (B) sequential step disturbances on the concentration of the OFS probe; (C)  $G_2(\tau)$  obtained for Zone 1; (D)  $G_2(\tau)$  obtained for Zone 4, with an exponential decay.

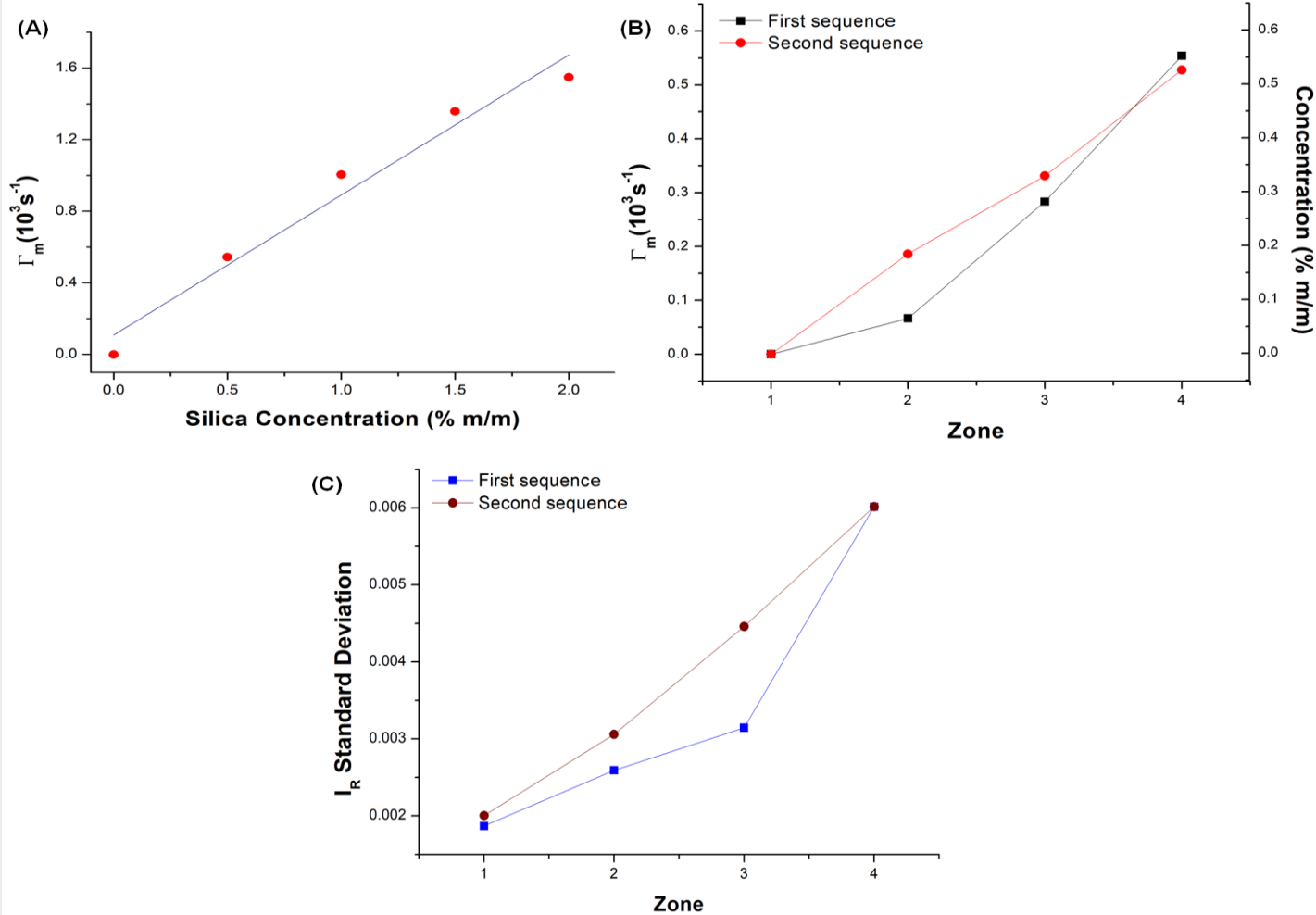


## 3. Results and Discussion

- In all of the 73 days: no QELS detected on the clarified zone (the hypothesis that the clarified is approximately free of particles is correct);
- Calibration curve was obtained:  $\Gamma_m$  for suspensions with known concentration of silica ( $\Gamma_m = 0.78288C + 0.10898$ , C in % m/m,  $R^2 = 0.95942$ ) -  **$0.78288 \times 10^3 \text{ s}^{-1}$  sensitivity.**
- The sensor probe was sequentially moved from Zone 1 to Zone 4 (concentration of 1.16%, estimated from Equation 3), in a first sequence of step disturbances, and then a second sequence was performed, from Zone 4 to Zone 1.



### 3. Results and Discussion



(A) Calibration curve;

(B)  $\Gamma_m$  and concentrations;

(C) standard deviations in each zone.



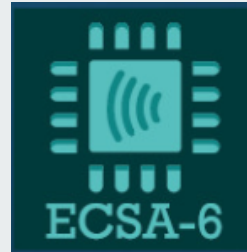
### 3. Results and Discussion

- Same tendencies between  $\Gamma_m$  and  $\sigma$  with similar behaviors for both sequences;
- Small modifications of the average signal when the probe is moved from one zone to another, what is probably caused by **fiber macrocurvature losses**;
- **Lowest and highest signal-to-noise ratios (SNRs)** evaluated as  $\mu^2/\sigma^2$ , where  $\mu$  is the average signal:  **$2.604 \times 10^4$  (Zone 4, second sequence)** and  **$2.869 \times 10^5$  (Zone 1, first sequence)**, respectively;
- **The measured concentrations were substantially inferior to the traditional sedimentation model**: the particles are not all concentrated in a same zone, but distributed between them.



## 4. Conclusions

- It was shown how a simple optical fiber sensor can be used for the monitoring of a multi-concentrated colloidal system;
- An environment comprised of different sedimentation zones, suitable for the simulation of concentration step disturbances was created;
- The **method has showed itself reliable for the monitoring of such environment, providing data that can be interpreted both in terms of data dispersion or of the decay rate of the autocorrelation function**, allowing the evaluation of the concentration;
- The information collected with the system show that **the real concentration values are very different from the ones estimated by the simple sedimentation models traditionally applied.**



Thank you for your attention!

**Questions?**

*marcosoares.feq@gmail.com*  
*fujiwara@fem.unicamp.br*

**FAPESP Grant 2017/20445-8**

