

# Temporal changes and alternating host tree root and shoot growth affect soil microbiomes

Jean de Dieu Habiyaemye<sup>1,2,3\*</sup>, Sylvie Herrmann<sup>1,4</sup>, François Buscot<sup>1,2,4</sup> and Kezia Goldmann<sup>1</sup>

<sup>1</sup>Department of Soil Ecology, Helmholtz Centre for Environmental Research-UFZ, Theodor-Lieser-Str. 4, 06120 Halle (Saale), Germany; [Sylvie.herrmann@ufz.de](mailto:Sylvie.herrmann@ufz.de) (S.H.), [francois.buscot@ufz.de](mailto:francois.buscot@ufz.de) (F.B), [kezia.goldmann@ufz.de](mailto:kezia.goldmann@ufz.de) (K.G.)

<sup>2</sup>Department of Biology II, Leipzig University, Johannisallee 21-23, 04103 Leipzig, Germany;

<sup>3</sup>Department of Mathematics, Science and Physical Education, University of Rwanda, P.O. Box 55 Rwamagana, Rwanda;

<sup>4</sup>German Centre for Integrative Biodiversity Research (iDiv) Halle-Jena-Leipzig, Deutscher Platz 5e, 04103 Leipzig, Germany.

\* Correspondence: [jean-de-dieu.habiyaemye@ufz.de](mailto:jean-de-dieu.habiyaemye@ufz.de) (J.D.H.)

† Presented at the 1st International Electronic Conference on Microbiology, 2–30 November 2020; Available online: <https://ecm2020.sciforum.net/>

Published: 2 November 2020

**Abstract:** Patterns of trees' endogenous rhythmic growth (ERG) and paralleled C allocation shift between root and shoot systems have been studied, but there is still a need to understand their impact in shaping soil microbiomes. Moreover, impact of plants on soil microbial communities can be modulated or outweighed by time-induced plant and/or seasonal changes. Thus, we intended to analyze the structure of soil microbiomes as response to simultaneous alternated host tree root and shoot flushes and time-induced changes within one vegetation period at two sites in Central Germany. In this study, we utilized oak phytometers (*Quercus robur* L., clone DF159) as host trees, and made use of their ERG, whereby consecutive root and shoot flushes make a complete growth cycle. We studied two complete growth cycles during the same vegetation period, performed a non-destructive soil sampling and applied high-throughput amplicon sequencing of the bacterial 16S gene and the fungal ITS2 region. As C allocation shifts between the tree root and shoot, released root exudates and consequently the nutrient availability alternate for soil microorganisms. We therefore anticipated different microbial communities in the host tree root zone along the growth cycles until autumnal leaf senescence. In our results, the bacterial community exhibited a directional change over time along the vegetation period. In contrast, the fungal community appeared sample specific. Our findings enlarge the current understanding of the temporal microbial assembly in the host tree root zone.

**Keywords:** Tree endogenous rhythmic growth; Microbial community structure; Bacteria; Fungi; Time-induced changes; Tree root zone; *Quercus robur* L.

---

## 1. Introduction

Plant-root associated microorganisms feed primarily on plant rhizodeposits [1], of which the amount and dynamics are correlated with plant biomass [2]. Recently, a mesocosm experiment on annual dynamics of microbes associated with roots of grass and forb species found significant changes on the bacterial community over time, while the fungal community varied according to the host plant species [3]. However, this work did not consider the effects of plant development that occur over a vegetation period, and the sampling times were not determined according to phases of the plant development.

Oak trees (*Quercus robur* L.) are characterized by an endogenous rhythmic growth (ERG) with an alternation of root flush (RF) and shoot flush (SF), which are constitutive of one rhythmic growth cycle [4]. This alternation can be followed by using anatomical shoot bud developmental stages from A to D [5]: bud resting for stage A indicates the end of a SF; bud swelling for stage B corresponds to ongoing RF; bud outbusting for stage C indicates the end of a RF; and leaf expansion from the bud known as stage D corresponds to a new SF. Over a vegetation period and depending on environmental parameters, oak trees can have one growth cycle (one RF and one SF), two growth cycles (RF1, SF1, RF2 and SF2) or even more cycles, concluded by the autumnal leaf senescence. The tree ERG is paralleled with high and low concentrations of photoassimilates in roots during the root and shoot flushes, respectively [6]. According to the “push” hypothesis, the more C ‘pushed’ into roots, the more C ought to be exuded from roots [7]. This should induce changes in the tree root associated microbial communities.

In the current research, we considered oak time-induced changes and the ERG as a single time entity, and analyzed their impact on the tree root zone microbial communities over one vegetation period. Due to bacteria rapid response to environmental changes [3], we hypothesized (1) temporal changes in bacterial communities. We also predicted (2) changes of the fungal communities over time, due to their dependence on host plants and tight attachment to recently assimilated C [8].

## 2. Materials and methods

The study was carried out at two grassland field sites in Central Germany: Bad Lauchstädt (51°23'29.65" N, 11°52'32.14" W) and Harsleben (51°51'43.43" N, 11°04'58.73" W). The two sites have similar weather conditions due to their geographic proximity. Oak phytometers used for this study were outplanted at the sites in November 2014, and soil was sampled during the vegetation period 2018. Based on the tree bud development stages, we determined the times of RFs and SFs and respectively sampled at the ends of the tree RF1, SF1, RF2, SF2, and at the senescence to conclude the vegetation period.

Soil samples were taken in the tree root and root-free zone as described previously Habiyaremye, *et al.* [9], despite the upper 0-15 cm soil 30 cm from the tree trunk that were taken. Detailed descriptions of the molecular methods, from DNA extraction to Illumina-based sequencing were also published before [9]. Bioinformatics and processing of sequences data were conducted using the dada2 pipeline (v0.5) [10], a DADA2 [11] implementation in snakemake [12].

Statistical analyses were performed using R v4.0.2 [13]. We performed a non-metric multidimensional scaling (NMDS) based on the Bray-Curtis dissimilarity matrices [14] to test divergences in the microbial communities over time. By using the function “adonis” of the vegan package v2.5-6 [15] we performed permutational analysis of variance (PERMANOVA) with 9999 permutations [16] to test the effect of sampling times for bacteria as well as sampling time and sampled position for the fungi. We further carried out Mantel correlation tests between a sampling time distance matrix (in days) and corresponding matrices of bacterial Bray-Curtis distances using 9999 permutations.

## 3. Results and discussion

From both the NMDS plot and PERMANOVA results, bacterial community of the tree root and root-free zones changed between time points along a vegetation period ( $p < 0.001$  for both the tree root and root-free zone) (Figure 1A). Mantel correlation test revealed positive linear correlation between distance in time and dissimilarities among the bacterial communities (Bad Lauchstädt:  $R = 0.59$ ,  $p < 0.001$  in the tree root zone, and  $R = 0.67$ ,  $p < 0.001$  in the tree root-free zone; Harsleben:  $R = 0.65$ ,  $p < 0.001$  in the tree root zone, and  $R = 0.31$ ,  $p = 0.008$  in the tree root-free zone) (Figure 1B).

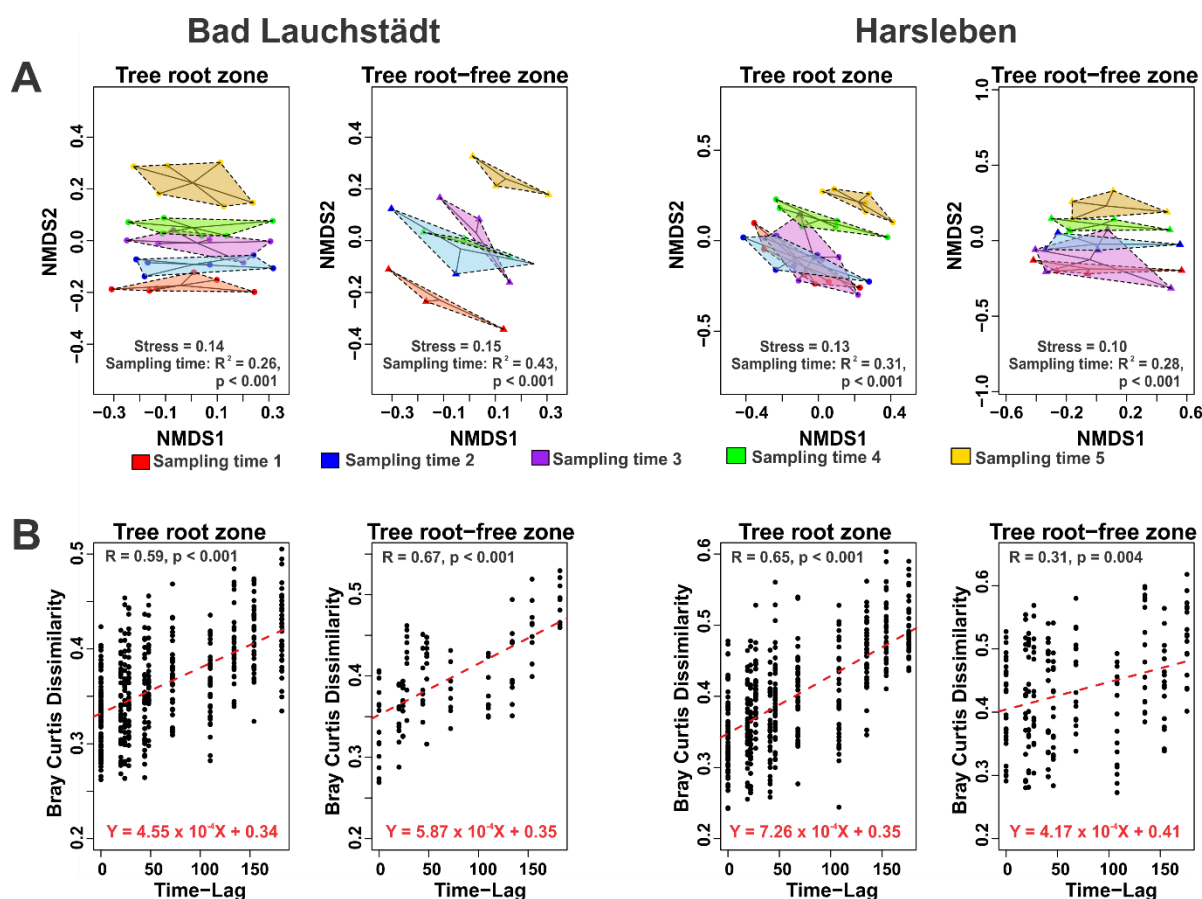


Figure 1. (A) NMDS based on Bray-Curtis dissimilarity displaying bacterial community structure along with succession of sampling times.  $R^2$  and  $p$  values are PERMANOVA results showing the effect of sampling time points, which coincided with ends of the tree RF1, SF1, RF2, SF2, and the senescence. (B) Correlation between distance in time along vegetation period and Bray-Curtis dissimilarity among the bacterial communities.  $R$  and  $p$  values are Mantel correlation test results. Time-Lag here means number of days in-between sampling times.

For fungal community of the tree root zone, sampling time points showed either no impact (Harsleben, PERMANOVA:  $p > 0.05$ ) or less impact compared to sampled trees (*Bad Lauchstädt*, PERMANOVA:  $R^2 = 0.13$  for sampling time and 0.50 for sampled trees,  $p < 0.001$ ). Within the tree root-free zone, a fine-scale niche partitioning of the fungi was also noticed (Figure 2).

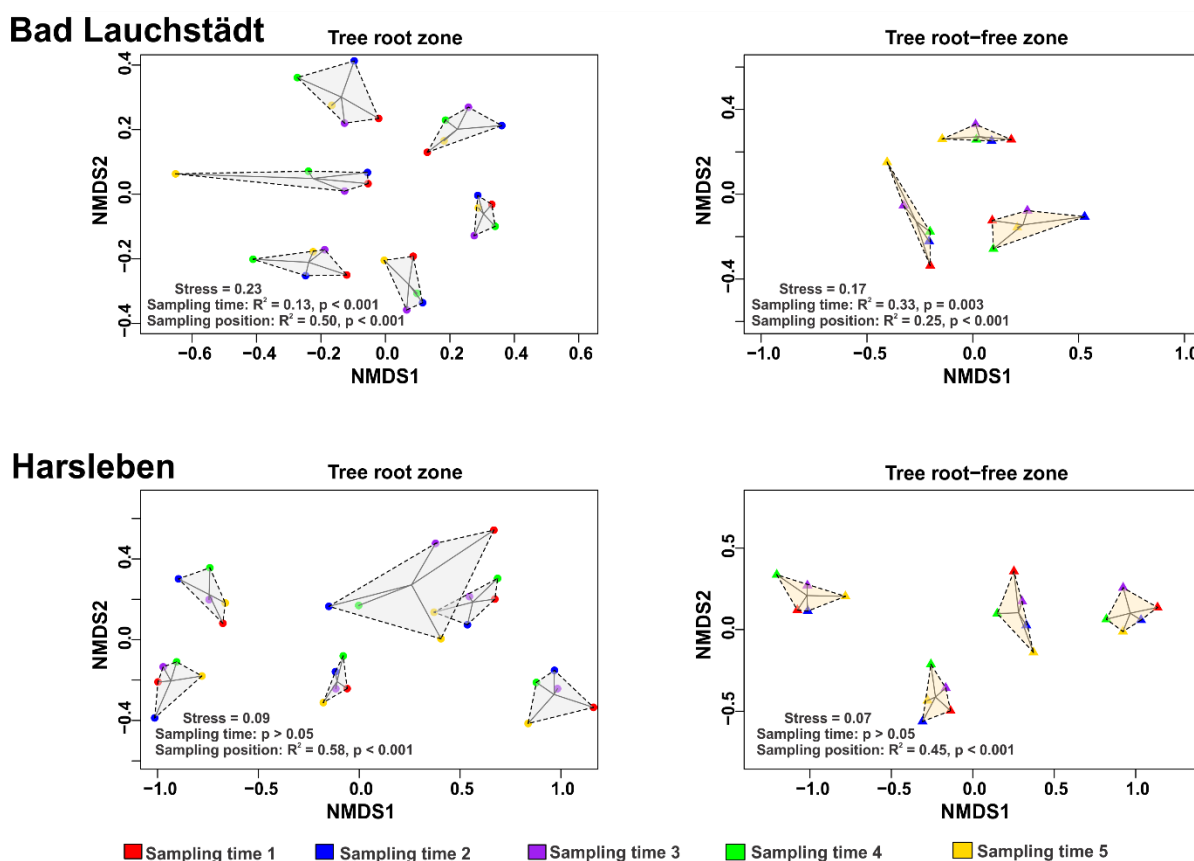


Figure 2. NMDS based on Bray-Curtis dissimilarity displaying fine spatial scale partitioning of the fungal community. Sampling times coincided respectively with ends of the tree RF1, SF1, RF2, SF2, and the senescence.

Our results confirmed the first hypothesis of temporal changes on the tree root zone bacterial community, but rejected the second hypothesis of time-induced changes on the fungal community over the vegetation period. Short-term variability in bacterial communities was also previously reported [17,18], while the majority of changes in soil fungal communities take place over longer time scales [17,18]. The rapid response of bacteria to environmental changes is a result of their relatively short generation times [17,18], versus the relatively long generation times for the fungi [3,17]. Referring to solely effects of plant time-induced changes, the bacterial community variations may have been a result of increasing size and productivity of the host plants, and subsequent changes in quantity and quality of the rhizodeposits over the vegetation period. This could explain the changes noticed in both the tree root and root-free zones.

The fungal community underwent time-induced succession in one site only. The community showed rather always fine spatial scale changes which may be explained by concurrent plant-soil interactions at fine spatial scales [19] and the fungi high dependence on host plants [8].

#### 4. Conclusion

Bacterial community in the root zone of the oak phytometers changed between time points along one vegetation period. On the contrary, the fungal community structure displayed fine spatial scale partitioning, closely linked to host plant individuals. With these results, we confirmed our original hypothesis of microbial community time dependence over vegetation period for the bacteria but we rejected it for the fungi. The current research underlines the significance of repeated samplings over a vegetation period, but could not decouple respective impacts of time and ERG. Future studies should parallel rhythmically growing host trees with continuously growing trees, and track development of their root-associated microbial community over several consecutive vegetation periods to determine respective magnitude of time and host plant rhythmic growth.

Acknowledgments: We are thankful to the Soil Ecology Department of the Helmholtz Centre for Environmental Research (UFZ), especially the staff of the TrophinOak/PhytOakmeter project; to the German Academic Exchange Service (DAAD); and to the University of Rwanda.

#### References

1. Dennis, P.G.; Miller, A.J.; Hirsch, P.R. Are root exudates more important than other sources of rhizodeposits in structuring rhizosphere bacterial communities? *FEMS microbiology ecology* 2010, *72*, 313–327.
2. Aulakh, M.; Wassmann, R.; Bueno, C.; Kreuzwieser, J.; Rennenberg, H. Characterization of root exudates at different growth stages of ten rice (*Oryza sativa* L.) cultivars. *Plant biology* 2001, *3*, 139–148.
3. Hannula, S.E.; Kielak, A.M.; Steinauer, K.; Huberty, M.; Jongen, R.; De Long, J.R.; Heinen, R.; Bezemer, T.M. Time after Time: Temporal Variation in the Effects of Grass and Forb Species on Soil Bacterial and Fungal Communities. *mBio* 2019, *10*, e02635-02619, doi:10.1128/mBio.02635-19.
4. Herrmann, S.; Recht, S.; Boenn, M.; Feldhahn, L.; Angay, O.; Fleischmann, F.; Tarkka, M.T.; Grams, T.E.E.; Buscot, F. Endogenous rhythmic growth in oak trees is regulated by internal clocks rather than resource availability. *Journal of Experimental Botany* 2015, *66*, 7113–7127, doi:10.1093/jxb/erv408.
5. Herrmann, S.; Grams, T.E.E.; Tarkka, M.T.; Angay, O.; Bacht, M.; Bönn, M.; Feldhahn, L.; Graf, M.; Kurth, F.; Maboreke, H., et al. Endogenous rhythmic growth, a trait suitable for the study of interplays between multitrophic interactions and tree development. *Perspectives in Plant Ecology, Evolution and Systematics* 2016, *19*, 40–48, doi:<https://doi.org/10.1016/j.ppees.2016.02.003>.
6. Angay, O.; Fleischmann, F.; Recht, S.; Herrmann, S.; Matyssek, R.; Oßwald, W.; Buscot, F.; Grams, T.E.E. Sweets for the foe – effects of nonstructural carbohydrates on the susceptibility of *Quercus robur* against *Phytophthora quercina*. *New Phytologist* 2014, *203*, 1282–1290, doi:10.1111/nph.12876.
7. Karst, J.; Gaster, J.; Wiley, E.; Landhäusser, S.M. Stress differentially causes roots of tree seedlings to exude carbon. *Tree Physiology* 2016, *37*, 154–164, doi:10.1093/treephys/tpw090.
8. Deneff, K.; Roobroeck, D.; Manimel Wadu, M.C.W.; Lootens, P.; Boeckx, P. Microbial community composition and rhizodeposit-carbon assimilation in differently managed temperate grassland soils. *Soil Biology and Biochemistry* 2009, *41*, 144–153, doi:<https://doi.org/10.1016/j.soilbio.2008.10.008>.
9. Habiyaremye, J.D.D.; Goldmann, K.; Reitz, T.; Herrmann, S.; Buscot, F. Tree root zone microbiome: exploring the magnitude of environmental conditions and host tree impact. *Frontiers in Microbiology* 2020, *11*, 749.
10. Weißbecker, C.; Schnabel, B.; Heintz-Buschart, A. Efficiently processing amplicon sequencing data for microbial ecology with dada2, a DADA2 implementation in Snakemake. *BioRxiv* 2020.
11. Callahan, B.J.; McMurdie, P.J.; Rosen, M.J.; Han, A.W.; Johnson, A.J.A.; Holmes, S.P. DADA2: High-resolution sample inference from Illumina amplicon data. *Nature Methods* 2016, *13*, 581–583, doi:10.1038/nmeth.3869.
12. Köster, J.; Rahmann, S. Snakemake—a scalable bioinformatics workflow engine. *Bioinformatics* 2012, *28*, 2520–2522, doi:10.1093/bioinformatics/bts480.
13. R Development Core Team, R.C. R Development Core Team. R: A Language and Environment for Statistical Computing, 2019. Available in: <https://www.r-project.org>. 2020.
14. Clarke, K.R. Non-parametric multivariate analyses of changes in community structure. *Australian journal of ecology* 1993, *18*, 117–143.
15. Oksanen, J.; Blanchet, F.G.; Friendly, M.; Kindt, R.; Legendre, P.; McGlinn, D.; Minchin, P.; O'Hara, R.; Simpson, G.; Solymos, P., et al. vegan: Community Ecology Package. R package version 2.5–6. 2019.
16. Anderson, M.J. A new method for non-parametric multivariate analysis of variance. *Austral Ecology* 2001, *26*, 32–46, doi:10.1111/j.1442-9993.2001.01070.pp.x.
17. Sun, S.; Li, S.; Avera, B.N.; Strahm, B.D.; Badgley, B.D. Soil Bacterial and Fungal Communities Show Distinct Recovery Patterns during Forest Ecosystem Restoration. *Applied and Environmental Microbiology* 2017, *83*, e00966-00917, doi:10.1128/aem.00966-17.
18. Lauber, C.L.; Ramirez, K.S.; Aanderud, Z.; Lennon, J.; Fierer, N. Temporal variability in soil microbial communities across land-use types. *The ISME Journal* 2013, *7*, 1641, doi:10.1038/ismej.2013.50
19. Burke, D.J.; López-Gutiérrez, J.C.; Smemo, K.A.; Chan, C.R. Vegetation and Soil Environment Influence the Spatial Distribution of Root-Associated Fungi in a Mature Beech-Maple Forest. *Applied and Environmental Microbiology* 2009, *75*, 7639–7648, doi:10.1128/aem.01648-09.

Publisher's Note: MDPI stays neutral with regard to jurisdictional claims in published maps and institutional affiliations.



© 2020 by the authors. Submitted for possible open access publication under the terms and conditions of the Creative Commons Attribution (CC BY) license (<http://creativecommons.org/licenses/by/4.0/>).