

Conference Proceedings Paper

Study of Black Carbon (BC) Mass Concentration Variation at Coastal Region (Surat)

Ranjitkumar Solanki ¹, K.N. Pathak ² *

^{1,2} Applied Physics Department Sardar Vallabhbhai National Institute of Technology- Surat, 395007 1;
ranjit33solanki@gmail.com

* Correspondence: drkamleshpathak@gmail.com

Abstract: Black Carbon (BC) aerosols mass concentration is study at Surat, Gujarat (India), coastal region near the Tapi River at the Gulf of Khambhat. Using Satellite Data for solar extinction due to Black Carbon (BC) mass concentration data have been collected from the Giovanni site (<http://giovanni.gsfc.nasa.gov/giovanni/>) developed by NASA. Results of the data for the 5-year period (January to December 2001-2005) have been discussed here. Annual and Seasonal variations of black carbon (BC) in relation to changes in the regional meteorological conditions. The data collected during January to December 2001-2005 indicated that annual average BC concentration. The mean annual variations of BC aerosols mass concentration seen the maximum in the month of December while minimum in the month of July. The seasonal mean BC mass concentration is lowest observed in monsoon while highest in winter at the study region. Variation of BC trend observed higher in the month December and lower in the month July which is mostly related to the changes in the local boundary layer.

Keywords: Black Carbon, Aerosols, Coastal Region

1. Introduction

Black carbon (BC), the main component of soot, is produced by the incomplete combustion of carbon-rich fuels. While the climate impacts of BC and other aerosols have been recognized for over 30 years, scientific understanding of BC as a climate-warming agent has evolved substantially over the last decade based on the results of field and satellite observations and modeling studies [1], [12]. Yet to date, BC has not been explicitly targeted through any global, regional, or national climate change policies or regulations. Instead, BC has been considered as a component of particulate matter (PM) and addressed as such in the policy and regulatory arena to control its public health and air quality (AQ) impacts.

Atmospheric heating by BC causes a strong positive radiative forcing at the top of the global atmosphere, offsetting a large fraction of the cooling by other aerosol components [4], [7], [13]. Deposited BC reduces the reflectance of Snow [15], which might significantly influence on local and regional climate [2]. It was recently estimated that BC may have contributed to more than a half of the observed Arctic warming since 1890, most of this occurring during the last three decades [14].

During recent years, BC has attracted special attention mainly because of its contribution to radiative warming of the atmosphere [3], [6], [8]. The Intergovernmental Panel on Climate Change (IPCC, 2007) has estimated that the global mean clear-sky radiative forcing of BC is $(0.23 \pm 0.25) \text{ Wm}^{-2}$, which is approximately half the value of methane, the second most important greenhouse gas after

carbon dioxide. The developing world, especially the Asian region with its large population, rapidly growing industrialization, and diverse living habitats, is believed to be one of the hotspots of carbonaceous aerosols [5], [11].

2. Data and Study region

2.1 Study Region

Present study area Surat (Coastal City) $21.17^{\circ} \text{N}, 72.83^{\circ} \text{E}$ is the southeastern part of the Gujarat state of west-central part India. It lies nearby the mouth of the "Tapti River" at the Gulf of Khambhat, close to the Arabian Sea. It also has a larger coastal area and is now the commercial and economic center in South Gujarat (INDIA), which is very famous for its diamonds and textile Industries. It is the eighth-largest city and ninth largest urban agglomeration in India.

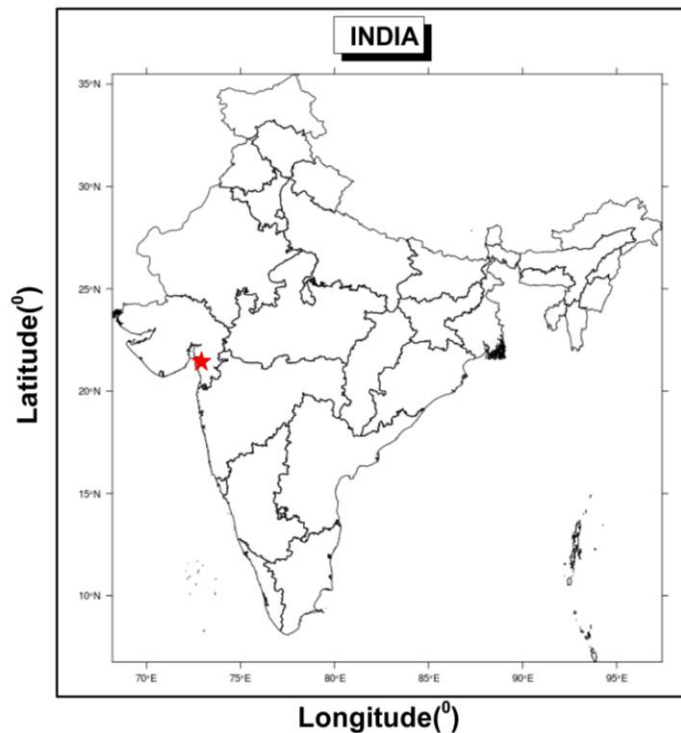


Figure (1): Geographical location of Study Area.

2.2 Data

In this study, we made use of the MERRA-II Model data at $0.5^{\circ} \times 0.625^{\circ}$ spatial resolution processed as the collected data set. In this study, MERRA-2 Black Carbon Surface Mass Concentration ($\mu\text{g}/\text{m}^3$) with Monthly temporal resolution, was downloaded from the Goddard Earth Sciences Data and Information Services Centre "GIOVANNI" platform [10]. Giovanni is a short form for the Goddard Earth Sciences Data and Information Services Center (GES-DISC) Interactive Online Visualization and Analysis Infrastructure [9]. It is a Web-based application developed by the NASA GES- DISC, and it is easy to use [9]. We will get customized data analyses and visualizations with ease [9].

3. Results and Discussion

3.1. Annual Variations of Aerosol Black Carbon Mass Concentration

From figure (2), It can be clearly seen that higher mass concentrations of BC are observed during October to March when cold weather conditions prevail during any year.

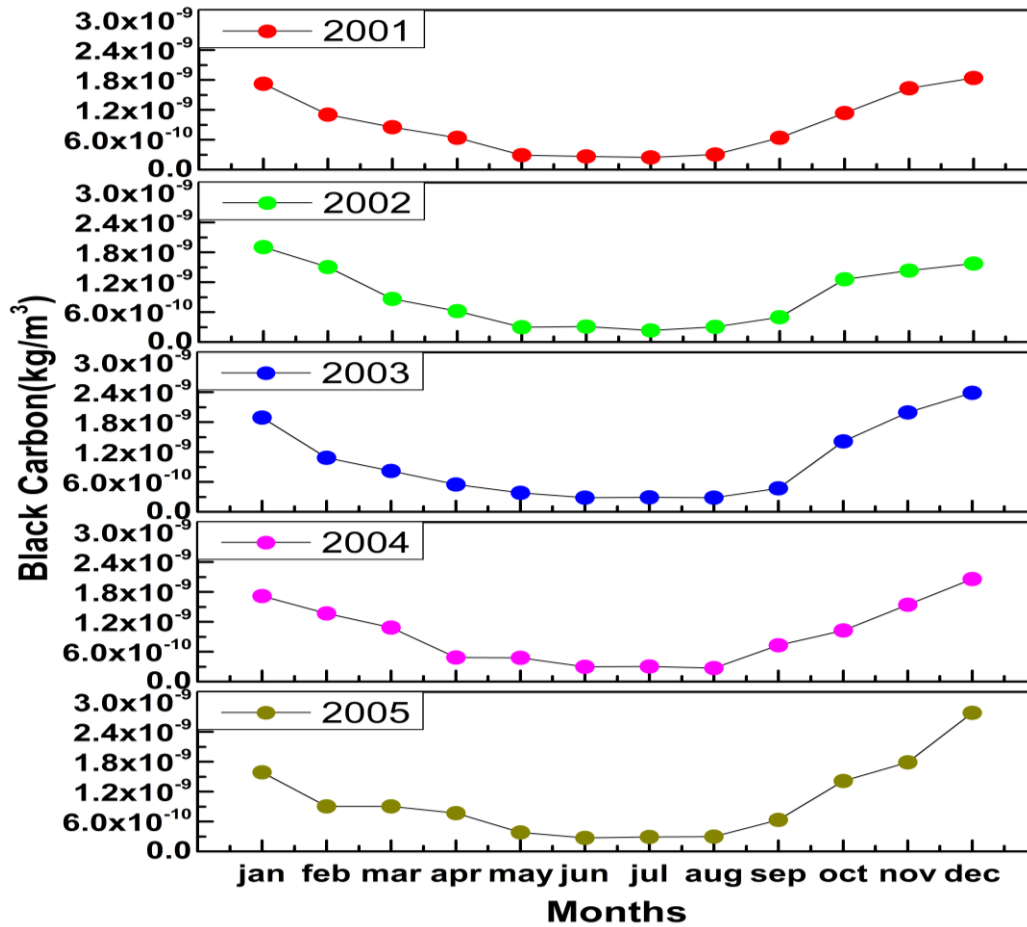


Figure (2): Annual Variation of black carbon(BC) over study region (2001 to 2005).

The black carbon mass concentration shows decreasing trends in June to September, with the monthly mean BC concentration falling to more than half the value that prevailed in cold months. This lower value is maintained until September. During this period, no influence of residential heating was observed at the site. The mean BC concentration during this period is in contrast to the value of kg/m^3 during cold months.

3.2 Seasonal Variation of Black Carbon

Summarizing the results on a seasonal basis, mainly four seasons are (I)Winter (December-March), (II)Pre-Monsoon (April-May), (III)Monsoon (June-September) and (IV)Post-Monsoon (October–November). Figure (3) shows that the seasonal mean BC mass concentration over the study region is lowest in monsoon and highest in Post Monsoon as well as in the winter season. Figure3 (A) shows higher values in December 2005 among all the years, while lower values reported in March respectively for all the years. From figure3 (B), It is also shown that the values periodically decrease in the Pre-Monsoon for all the years subsequently. During monsoon season, the rainfall and the dilution of pollutants near the ground result in lower BC Mass concentrations, as shown in figure3(C). During Post-Monsoon, gradually increase BC Mass concentration, as shown in figure3(D) for all the years, respectively.

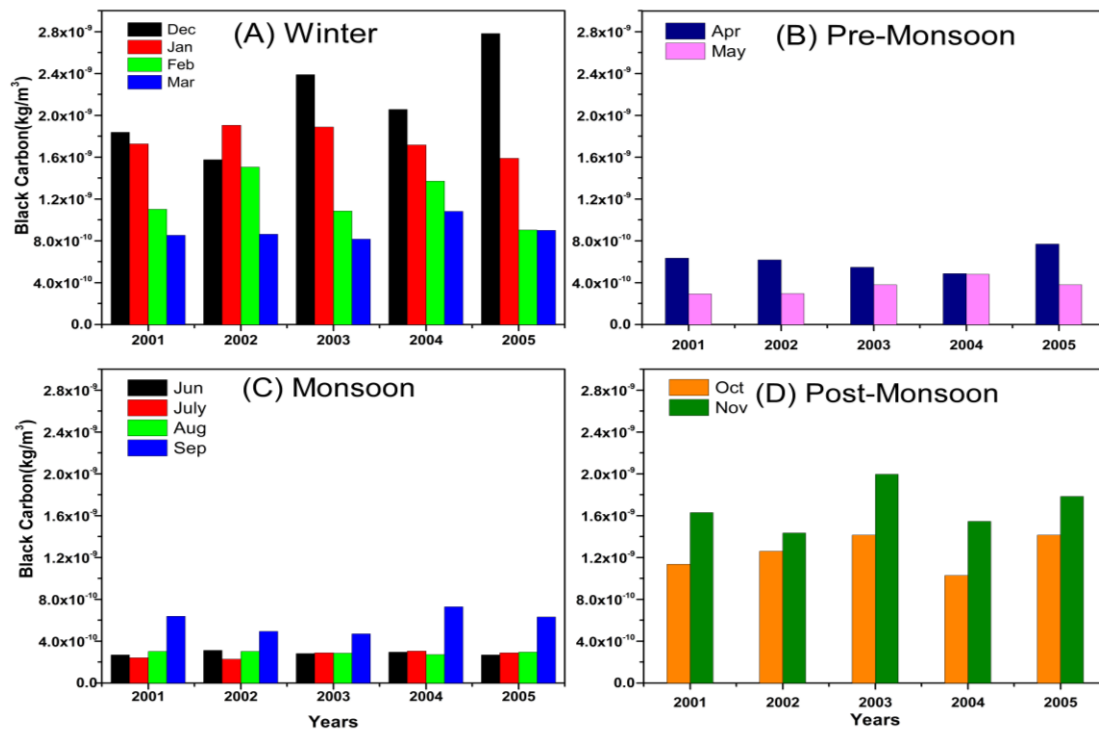


Figure (3): Seasonal Variation of black carbon(BC) for (A)Winter, (B)Pre-Monsoon, (C)Monsoon, and (D)Post- Monsoon over study region (2001 to 2005).

As it is expected, urbanization and increased anthropogenic activities have contributed particulates load into the atmosphere over Surat. For most of the years, the trend in the variation of Black Carbon(BC) is the same.

5. Conclusions

In this study, we have discussed five years' data. BC mass concentrations observed at Surat sites have been carried out using MEERA-II Model Data during January to December 2001-2005. The result shows annual and seasonal variation of Aerosol Black carbon mass concentration over the study region. The mean monthly and seasonal variations of Black Carbon aerosols mass concentration show a higher value in January and December and then gradually decrease till July. The seasonal mean BC mass concentration is lowest in monsoon–2003 and highest in winter–2005 as well as in Post-Monsoon–2003. It shows the lower values during the monsoon for all the years.

Author Contributions: Conceptualization, R.S., and K.P.; methodology, R.S.; validation, R.S., and K.P.; formal analysis, R.S.; investigation, R.S.; resources, R.S; data curation, R.S.; writing—original draft preparation, R.S.; writing—review and editing, R.S.; visualization, R.S., and K.P.; supervision, K.P.; All authors have read and agreed to the published version of the manuscript.

Funding: Authors are thankful to UGC New Delhi for providing RGNF fellowship (No. F1-17.1/2015-16/RGNF-2015-2017-SC-GUJ-26508(SA-III/Website) JANUARY 2016.

Acknowledgments: The authors wish to thank for providing data sets used in this paper were produced with the Giovanni online data system, developed and maintained by the NASA GES DISC.

Conflicts of Interest: The authors declare no conflict of interest.

References

1. Bond, Tami C., and Haolin Sun. "Can reducing black carbon emissions counteract global warming?" (2005): 5921-5926.

2. Flanner M. G., Zender C. S., Hess P. G., Mahowald N. M., Painter T. H., Ramanathan V., and Rasch P. J. (2009). Springtime warming and reduced snow cover from carbonaceous particles, *Atmos. Chem. Phys.*, 9, 2481– 2497.
3. Haywood, J. M. and Shine, K. P.: Multi-spectral Calculations of the Radiative Forcing of Tropospheric Sulphate and Soot Aerosols Using a Column Model, *Q. J. Roy. Meteorol. Soc.*, 123, 1907– 1930, 1997.
4. Haywood J.M., Roberts D.L., Slingo A., Edwards J.M., and Shine K.P. (1997). General circulation model calculations of the direct radiative forcing by anthropogenic sulphate and fossil-fuel soot aerosol, *J. Clim.*, 10, 1562-1577.
5. IPCC (Intergovernmental Panel on Climate Change): The Scientific Basis, in: Contribution of Working Group I to the Fourth Assessment Report of the Intergovernmental Panel on Climate Change, edited by: Solomon, S., Qin, D., Manning, M., Chen, Z., Marquir, M., Averyt, K. B., Tignor, M., and Miller, H. L., Cambridge Univ. Press, New York, Climate Change, 2007. Jacobson, M. Z.: Strong radiative heating due to the mixing state of black carbon in atmospheric aerosols, *Nature*, 409, 695–697, 2001.
6. Jacobson, M. Z.: Control of fossil-fuel particulate black carbon and organic matter, possibly the most effective method of slowing global warming, *J. Geophys. Res. Atmos.*, 107, 4401, doi:10.1029/2001JD001376, 2002.
7. Jacobson M. Z. (2004). Climate response of fossil fuel and biofuel soot, accounting for soot's feedback to snow and sea ice albedo and emissivity, *J. Geophys. Res.* 109, D21201, doi:10.1029/2004JD004945.
8. Myhre, G., Stordal, F., Restad, K., and Isaksen, I. S. A.: Estimation of the Direct Radiative Forcing Due to Sulfate and Soot Aerosols, *Tellus*, 50, 463–477, 1998.
9. Ganesh, K. E., et al. "A STUDY ON LONG TERM VARIATION IN PARTICULATE MATTER AND BLACK CARBON AEROSOL OPTICAL THICKNESS OVER MYSURU, INDIA: A SATELLITE DATA APPROACH." *MAUSAM* 69.2 (2018): 331-334.
10. NASA Earth Data Giovanni Webpage. Available online: <https://giovanni.gsfc.nasa.gov/giovanni/>.
11. Oshima, N., Kondo, Y., Moteki, N., Takegawa, N., Koike, M., Kita, K., Matsui, H., Kajino, M., Nakamura, H., Jung, J. S., and Kim, Y. J.: Wet removal of black carbon in Asian outflow: Aerosol Radiative Forcing in East Asia (A-FORCE) aircraft campaign, *J. Geophys. Res.*, 117, D03204, doi:10.1029/2011JD016552, 2012.
12. Ramanathan, V., & Feng, Y. (2009). Air pollution, greenhouse gases and climate change: Global and regional perspectives. *Atmospheric environment*, 43(1), 37-50.
13. Ramanathan V., and Carmichael G. (2008). Global and regional climate changes due to black carbon, *Nature Geosciences* 1, 221-227, doi:10.1038/ngeo156.
14. Shindell D., and Faluvegi G. (2009). Climate response to regional radiative forcing during the twentieth century, *Nature Geosci.* 2, 294-300.
15. Warren S., and Wiscombe W. (1980). A model for the spectral albedo of Snow. II: Snow containing atmospheric aerosols, *J. Atmos. Sci.*, 37, 2734-2745.

