

Developing an Agent-Based Model for *Haplodrassus rufipes* (Araneae: Gnaphosidae), a Generalist Predator Species of Olive Tree Pests: Conceptual Model Outline [†]

Raquel Barreira ^{1,2,*}, Maria Catarina Paz ³, Luís Amaro ^{4,5}, José Paulo Sousa ⁵, Jacinto Benhadi-Marín ⁶, Mykola Rasko ⁵, António Alves da Silva ⁵, Joana Alves ⁵, Andrey Chuhutin ⁷, Christopher John Topping ⁷ and Sónia A.P. Santos ^{3,8}

¹ CMAFcIO—Centro de Matemática, Aplicações Fundamentais e Investigação Operacional, Faculdade de Ciências da Universidade de Lisboa, Portugal

² INCITE, Barreiro School of Technology, Polytechnic Institute of Setúbal, Lavradio, Portugal

³ CIQuiBio, Barreiro School of Technology, Polytechnic Institute of Setúbal, Lavradio, Portugal; catarina.paz@estbarreiro.ips.pt (M.C.P.); sonia.santos@estbarreiro.ips.pt (S.A.P.S.)

⁴ Barreiro School of Technology, Polytechnic Institute of Setúbal, Lavradio, Portugal; luis.amaro@estudantes.ips.pt

⁵ University of Coimbra, Centre for Functional Ecology, Department of Life Sciences, Coimbra, Portugal; jps@zoo.uc.pt (J.P.S.); mikola_rasko@hotmail.com (M.R.); antonioalvesdasilva@gmail.com (A.A.d.S.); joanasilvaalves@gmail.com (J.A.)

⁶ Centro de Investigação de Montanha (CIMO), Instituto Politécnico de Bragança, Campus de Santa Apolónia, Bragança, Portugal; jbenma@ipb.com

⁷ Department of Bioscience, Aarhus University, Kalø, Denmark; andrey@bios.au.dk (A.C.); cjt@bios.au.dk (C.J.T.)

⁸ LEAF, Instituto Superior de Agronomia, Lisbon, Portugal

* Correspondence: raquel.barreira@estbarreiro.ips.pt; Tel.: +351-212-064-660

† Presented at the 1st International Electronic Conference on Plant Science, 1–15 December 2020; Available online: <https://iecps2020.sciforum.net/>.

Published: 1 December 2020

Abstract: Olive growing has been facing major sustainability challenges due to intensification, resulting in an increase use of pesticides and fertilizers and, consequently, in the depletion of natural resources, loss of biodiversity and landscape values. This has created an urgent need to develop models for managing complex agroecosystems that integrate factors affecting food quality, sustainability and biodiversity, providing a supporting technique to understand the consequences of agricultural management for ecosystem services. We are developing an advanced agent-based simulation (ABS) applied to the olive grove to model the effects of farming practices on the abundance of olive pests predators. ABS is a modelling technique where agents represent animals (predator arthropods, in our case) acting in their environment. Our model is based on an ABS system developed by Aarhus University, the ALMaSS, which comprises highly detailed farm management and spatial structures to construct dynamic landscapes where agents operate. In this work we present the conceptual model for one of the selected species, *Haplodrassus rufipes* (Araneae: Gnaphosidae).

Keywords: agent-based simulation; complex agroecosystems; olive crops; *Haplodrassus rufipes*

1. Introduction

The dissemination of intensive agricultural practices and land use dedicated to mono-cultures is a tendency spreading on the portuguese rural landscape. This type of agriculture involves the use of large amounts of pesticides, fertilizers, and water, originating the degradation and depletion of soil and groundwater, the loss of biodiversity and the decrease of landscape values. This represents a major challenge to the sustainability of the olive sector in the long term. Agent-based simulation

(ABS) is a computer tool that can be applied to agroecosystem science in order to predict the behaviour of animal species exposed to multiple stressors [1,2], including those derived from the intensification of agriculture. In this modelling technique, agents represent animals operating in their environment. To develop such a model (1) the life history of the animal is delineated, (2) a conceptual model is outlined based on that life history, and (3) the conceptual model is coded into a system that allows simulations. In this paper we present the applied methodologies to the development of an agent-based conceptual model for *Haplodrassus rufipes* (Araneae: Gnaphosidae), and early-stage results, using the ALMaSS framework, for the study period 2011 and 2012, applied to the olive grove to model the effects of farming practices on the abundance of *H. rufipes*.

H. rufipes is a generalist twilight predator, part of a group of predator arthropods that inhabit the olive grove and constitute complementary control agents against olive tree pests [3]. Its main habitat is soil under stones, where it finds refuge, feeds, and breeds [3]. *H. rufipes* development has different stages from egg to adult stage. At the end of each growing period, called instar, the entire cuticle is replaced by a new one through a process called moulting. From hatching until reaching adulthood, *H. rufipes* passes $2+n$ instars, 2 inside the eggsac, (observed in laboratory for *H. rufipes*, and also based on research of [4], for *Haplodrassus signifier*), a silken case containing the eggs, usually placed under stones and guarded by the mother, and n outside the eggsac, as spiderling, until it finally becomes an adult.

2. Experiments

2.1. Study Area

The study area (Figure 1) consists of a square-shaped 10 km² landscape window, located in Northeast of Portugal. Climate is temperate with rainy winters and hot and dry summers, according to the Köppen classification [5]. Daily records of air temperature, soil temperature and precipitation measured during the study period (2011 and 2012) at the meteorological station operated by the Instituto Português do Mar e da Atmosfera (IPMA), represented by a yellow circle in Figure 1, are shown in Figure 2. Land cover consists mainly of olive orchards, temporary crops and pastures. Forests also represent an important part of the land cover in study area, mostly in the southeastern region. Urban areas are less representative, with a part of Mirandela city appearing in the southwestern corner of the study area.

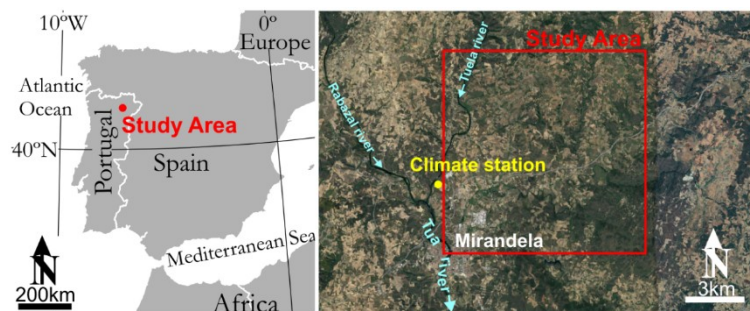


Figure 1. Location of the study area © Google Earth.

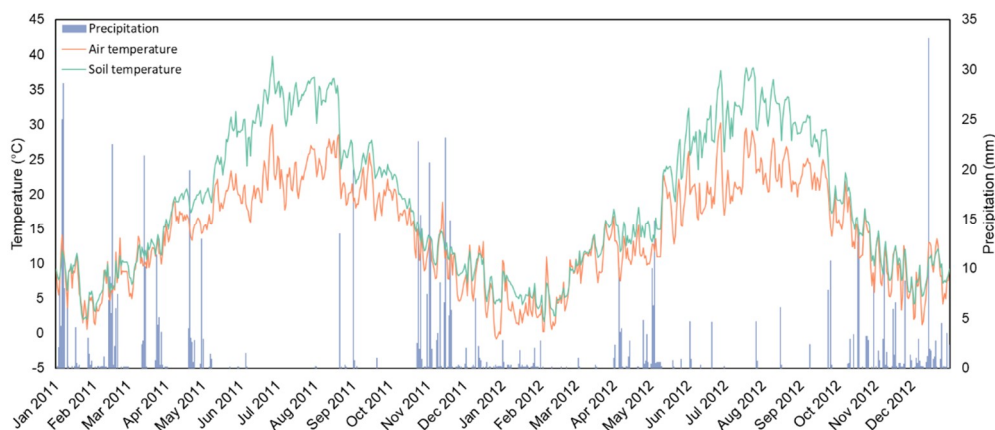


Figure 2. Daily precipitation (mm) and mean air and soil temperature (°C) recorded at the meteorological station located in the study area, during the study period.

2.2. The ALMaSS Framework

The model for *H. rufipes* was developed under the framework of ALMaSS, the Animal, Landscape and Man Simulation System [1]. This framework combines ABS for animals with a dynamic landscape simulation, allowing to observe how the changing landscape due to climate and farm management events affect key animal species. In this study, the landscape map is the study area showed in Figure 1, a 10 × 10 km area, where to each vegetation patch a geographic information system (GIS) polygon is assigned. The framework has a spatial resolution of 1 m, and a selectable time-step, which in this case is 1 day. It responds to daily climate variables inputs and farm management events (a set of farm events that happen in each GIS polygon of the landscape), that act on the landscape and on the agent-based models for animals.

2.3. Methodology for the Development of the Conceptual Model for *H. rufipes*

Features, values, simplifications and assumptions of the conceptual model for *H. rufipes* were set accordingly to data collected from the literature about this spider species and other *Haplodrassus* or *Gnaphosidae* species, and also through laboratorial experiments and field observations. Literature review was especially oriented to (a) the understanding of the life history of *H. rufipes*, which allowed to establish the life stages and the respective functions (1) development, (2) mortality, (3) overwintering, (4) movement, and (5) reproduction, and (b) the collection of data for the variables that influence *H. rufipes* life history.

Climate series referent to the years 2011 and 2012 were provided by IPMA in an hourly format and pre-processed and converted to daily format using R [6]. Daily temperatures were obtained calculating the average of the 24 hourly measures of each day, and daily precipitation were obtained calculating the sum of the same data.

3. Results and Discussion

3.1. Conceptual Model for *H. rufipes*

Figure 2 shows a scheme of the main features of the model being built for *H. rufipes*. The life stages considered for each individual were (1) Egg, (2) Spiderling, and (3) Adult. Individuals entered the next life stage if they did not die first. Only female individuals were considered, because they are the ones that limit the number of next generation of individuals. Figure 2 also shows the functions that rule the individual in each life stage. These functions depend on variables including Daily soil temperature ($T - ^\circ\text{C}$), because this is a spider that lives on the soil surface and topsoil (0–0.3 m), Daily precipitation ($P - \text{mm}$), Refuge (a categorical variable expressing the abundance of stones of each GIS polygon in the landscape), Food Availability (a categorical variable expressing the abundance of food

of each GIS polygon in the landscape, and dependent only on farm management events), and farm management events.

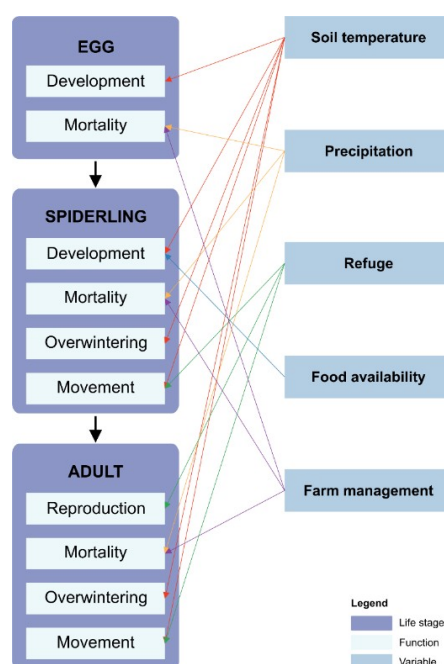


Figure 2. Life stages and respective functions for each individual, and variables on which those functions depend.

3.1.1. Development

Development rates, r (day^{-1}), of the individuals at Egg and Spiderling life stages are dependent on T . We used the linear day-degree model, as referred in [7] to express these rates:

$$r = (T - T_a)/K \tag{1}$$

where T_a is the lower temperature threshold for development ($^{\circ}\text{C}$) and K is the duration of stage, a measure of the physiological time required for the completion of a developmental process, in day-degree (dd) (Table 1). Upper threshold for development was not considered because it was assumed that this spider is adapted to the climate of the study area, being able to regulate the heat to each its eggs are subjected by placing them under stones where they develop correctly [8].

Table 1. Lower threshold for development ($T_a - ^{\circ}\text{C}$) and duration of stage ($K - \text{dd}$) for the Egg and Spiderling life stages.

Life Stage	T_a ($^{\circ}\text{C}$)	K (dd)
Egg	5	420 ¹
Spiderling	5	630 ²

¹ Laboratorial experiment: the eggsac takes 20 days to develop at a controlled temperature of 21 $^{\circ}\text{C}$. ² Assumption: If two instars inside eggsac took 20 days to develop at a controlled temperature of 21 $^{\circ}\text{C}$, we will consider a linear relation between number of days and number of instars. We also consider it reasonable that a spider should undergo three instars outside the eggsac before reaching adulthood. This way, three instars outside eggsac would take 30 days to develop at 21 $^{\circ}\text{C}$.

Spiderling development rate was dependent on the categorical variable Food Availability, assigned to each GIS polygon. The development rate was multiplied by a factor related with Food Availability category (Table 2). Food was considered as a non-limited item for the spider, because it is generalist and doesn't depend only on prey biomass (which is a function of crop growth, represented by leaf area index and biomass metrics). *H. rufipes* can eat food available in the soil, especially under stones, when there is less food available from the vegetation (e.g., preys, nectar, blackscale honeydew, ...) because of farm management and/or climate occurrences. This way, we

classify the Food Availability into two categories: Excellent, corresponding to no farm management events, and High, corresponding to when tilling, pesticide and fertilizer application, and harvest occur.

Table 2. Factor of multiplication of r according to Food Availability category.

Food Availability Category	Factor of Multiplication
Excellent	1.00
High	0.95

3.1.2. Mortality

Mortality is a stochastic function reflecting actions that arise from the landscape – abiotic conditions and farm management – and from interaction with other species or developmental problems – biotic conditions.

To these factors different probabilities of spider mortality were assigned, based on reasonable assumptions subjected to further attuning, (Table 3), which are implemented when each of them occurs.

Table 3. Probability of spider mortality for each life stage, according to actions.

Mortality	Action	Egg	Spiderling	Adult
Abiotic	P > 20 mm ¹	0.15	0.15	0.15
	Maximum of accumulated P in 5 days > 30 mm ¹	0.15	0.15	0.15
Farm management	Tilling	0.50	0.50	0.50
	Pesticide application	0.05	0.10	0.10
	Fertilizer application	0.05	0.10	0.10
	Consequences of harvest	0.05	0.10	0.10
Biotic	Failures during moulting process		0.10	
Daily ²	Daily mortality	0.001	0.001	0.0005
	Daily mortality – overwintering		0.0001	0.0001

¹ Flood condition according to [9,10]. ² Includes biotic factors parasitism and predation.

Abiotic mortality is related to extreme events – insufficient soil water content and floods. Note that mortality associated with low and high temperatures was not considered because this spider is well adapted to the low temperatures that occur in the study area, and also its behaviour of living under stones allows it to cope with high temperatures.

Farm management mortality was related to farming operations such as tilling, application of pesticides and fertilizers, and consequences of harvest. In addition, a set of specific mortality probabilities for each of the actions occurring in the different types of crops, particularly different types of olive groves, is being developed. Pesticide application was considered to influence the mortality of spider to a lesser extend as compared to fertilizer application or consequences of harvest. This is because hypothetically the spider is protected under stones from toxicity by contact. However, there was the possibility of ingestion of preys that were killed by pesticides. This possibility will be further appraised.

Biotic mortality was related to failures during the moulting process (for Spiderling), parasitism and predation.

Failures during the moulting process can occur when the spiderling moults. Because the moulting process takes less than the time step of the model (1 day), it was not considered for modelling. However, the associated mortality probability was run at the end of the Spiderling life stage (when development finishes).

Parasitism and predation were included in a mortality category called Daily Mortality. Daily Mortality was different when the spider is active and when it overwinters. Adult was considered immobile in terms of movement, during egg development, has Daily Mortality as an active spider (opposite to overwintering) because although considered immobile it walks during the twilight and returns to the same place.

3.1.3. Overwintering

H. rufipes overwinters during the period of the year when temperature and food supplies are low. During this period all individuals are immobile and don't eat.

In the model, because the first day of the simulation was defined to be January 1st, the spider initiates the simulation overwintering, so there will be a small period of overwintering in the beginning of the simulation. The number of day-degrees was calculated for the smallest overwintering period and for the normal period corresponding to the simulation running for the subsequent year. For this, the mean temperature of soil was calculated for the periods 1 January–21 March and 21 December–21 March, with a result of 7.75 °C, and 7.71 °C, respectively. The day-degrees for the two intervals was obtained multiplying the mean temperature of soil by the number of days of each period (Table 4).

Table 4. Day-degrees (dd) for overwintering according to period of the year.

Period	Day Interval	Number of Days	Mean T (°C)	dd ¹
1 January–21 March	1–80	80	7.75	620
21 December–21 March (subsequent year)	355–445	90	7.71	694

¹ This parameter is obtained multiplying the mean temperature by the number of days of each period.

This way, to start movement and ability to reproduce, the spider accumulates day-degrees from the beginning of the year and starts dispersal when the sum exceeds a threshold, 620 dd, or at day 80 counted from the beginning of the year. On day 355 adults start overwintering until the end of the simulation (if it goes only until December 31st). They start dispersal when the sum exceeds a threshold, 694 dd, or at day 445 counted from the beginning of the first year of simulation.

3.1.4. Movement

Movement is a stochastic function that runs between a lower T threshold (T_{mi}), and an upper T threshold (T_{ms}) (Table 5).

Table 5. Lower and upper T threshold for movement (T_{mi} – °C, and T_{ms} – °C, respectively).

	Spiderling	Adult
T_{mi}	4 ¹	4 ¹
T_{ms}	32	32

¹ According to [3].

Adult will move more freely than Spiderling, except during the period of egg development. Each step corresponds to 1 m displacement. The tendency of a spider to occupy a particular polygon is determined by a categorical variable called Refuge (Table 6). If the spider is in a GIS polygon with a low Refuge category (equal or less than 2), it will walk the allowed maximum number of spatial steps, so it can try to get out of that polygon. If the spider is in a GIS polygon with a high Refuge category (equal to 3), it will walk less than the allowed maximum number of steps.

Table 6. Category of Refuge according to the main vegetation cover of each polygon.

Main Vegetation Cover	Category of Refuge (0 to 3)
Temporary crops	1
Forest - non-oaks	1
Forest - other oaks	1
Forest - cork oak	2
Forest - holm oak	2
Woods	1
Pasture	1

Coniferous forest	1
Almond orchard	3
Urban	1
Shrubland	2
Vine	2
Water	0
Olive orchard - superintensive	1
Olive orchard - intensive	1
Olive orchard - traditional	3
Olive orchard - traditional intensive	2
Olive orchard - traditional biological	3
Road	0

Table 7 shows the maximum number of steps that a spider can walk per day. Adult is considered immobile during the egg development period. This is because the walk for hunting ends always at the same place – the place of the eggs – and its duration (twilight) is inferior to the time step of the model. In fact, [4] observed adult females near the eggsacs in the field. Therefore, it is expected that adult females will stay close to their eggsacs, even when they hunt during twilight.

Table 7. Maximum spatial steps that a spider can walk per day.

	Maximum Number of Steps per Day
Spiderling	5
Adult	2
Adult during egg development period	0

3.1.5. Reproduction

Only the adults that are at polygons with category of refuge equal to 3 (Table 6) in spring may initiate reproduction. This way, each adult infers what day of the year that day is, and if it is in a proper place. This place will be like a nest, where the eggs will be laid. The adult starts laying eggs as soon as it stops overwintering. Depending on the time of the year, it will have a certain probability of reproducing. The high summer temperatures diminish the movement of spiders and therefore there may be no encounters between males and females for mating. Therefore, in our model we set that there will be no ability to lay eggs from July 1st, the 182nd day of the year, onwards. We also consider it will only reproduce in its first year of life. The assumed reproduction probabilities according to time of the year are shown in Table 8. Finally, during the period of development of the eggs the probability of reproduction is 0.

Table 8. Probability of reproduction according to the time of the year.

Beginning Day ¹	Ending Day ¹	Probability of Reproduction
1	D	0
D+1	120	0.011
121	181	0.900
182	365	0

¹Days are counted from the beginning of the year. D is the day the spider stops overwintering.

It has been observed in the lab that from each eggsac an average of 20 spiderlings hatch. Because we are only considering females in this model, we established that half of this number corresponds to females. This way, each adult lays two sets of eggs, each containing 10 eggs. Therefore each adult lays 20 eggs. A set of eggs represents the concept of an eggsac.

In this moment, the code being built for *H. rufipes* model allows to simulate the reproduction function in a generic landscape. Figure 3 shows the eggs laid by adults on two different steps of the simulation of reproduction of *H. rufipes*, using the ALMaSS framework in the generic landscape.

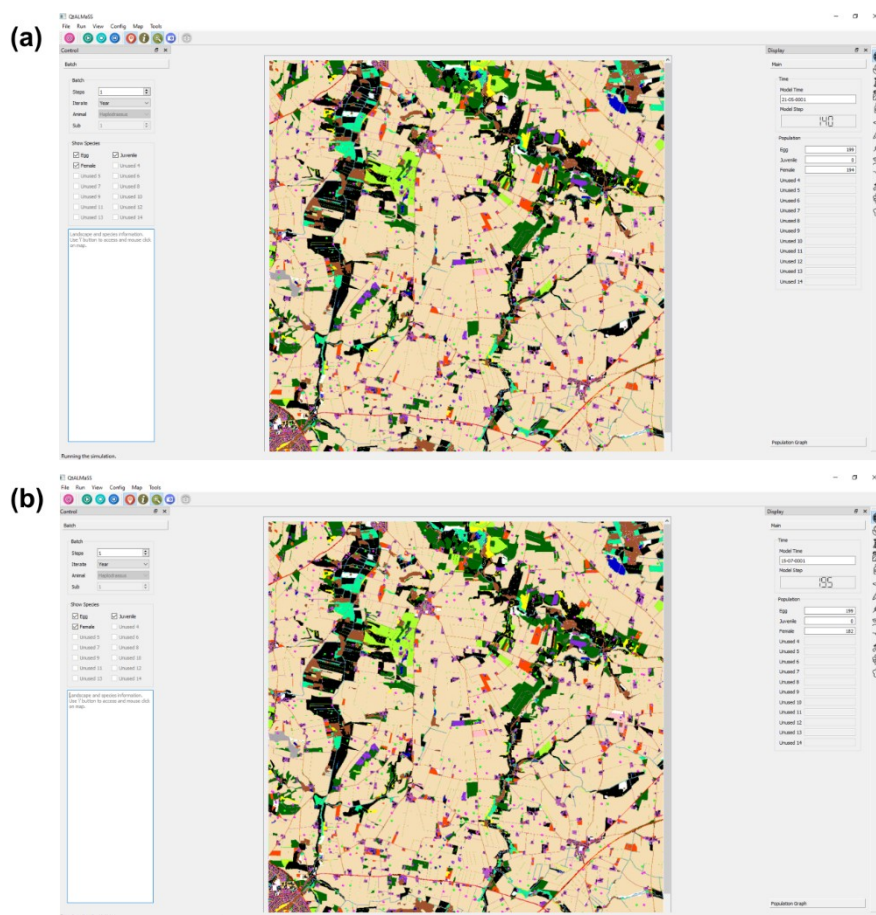


Figure 4. Two different steps of the simulation of *H. rufipes* reproduction using the ALMaSS Figure 140. corresponding to 21 May, and (b) step 195 corresponding to 15 July.

5. Conclusions

The conceptual model for *H. rufipes* is outlined and producing its first results in code development. The ABS is a valuable tool for ecological modelling.

Author Contributions: R.B., M.C.P., L.A, M.R., J.P.S., J.B.-M., A.A.d.S., C.J.T. and S.A.P.S. developed the conceptual model for *H. rufipes*; A.A.d.S. and J.A. developed the landscape model for the study area; R.B. and M.C.P. processed the climate data; R.B., M.C.P., and S.A.P.S. wrote the manuscript; M.C.P. prepared the visualization; R.B. and S.A.P.S. acquired the funding.

Acknowledgments: This work was funded by Fundação para a Ciência e Tecnologia through project PTDC/ASP-PLA/30003/2017 - OLIVESIM - Managing ecosystem services in olive groves using advanced landscape agent-based models; and by European Union’s Horizon 2020 through project ECOSTACK (Grant Agreement 773554 – H2020-SFS-2016-2017/H2020-SFS-2017-2). L.A. is sponsored by a grant from the “Instituto do Ambiente Tecnologia e Vida da Universidade de Coimbra”.

Conflicts of Interest: The authors declare no conflict of interest.

Abbreviations

The following abbreviations are used in this manuscript:

ABS	agent-based simulation
GIS	geographic information system
T	temperature
P	precipitation
dd	day-degree

References

1. Topping, C.J.; Hansen, T.S.; Jensen, T.S.; Jepsen, J.U.; Nikolajsen, F.; Odderskær, P. ALMaSS, an agent-based model for animals in temperate European landscapes. *Ecol. Model.* **2003**, *167*, 65–82. doi:10.1016/S0304-3800(03)00173-X
2. Corral, J.; Calegari, D. Towards an Agent-Based Methodology for Developing Agro-Ecosystem Simulations. In *Software Engineering and Formal Methods. SEFM 2011. Lecture Notes in Computer Science, vol 7041*; Barthe, G., Pardo, A., Schneider, G., Eds.; Springer: Berlin/Heidelberg, Germany, 2011.
3. Benhadi-Marín, J. Diversity Patterns of Araneae along a Gradient of Farming Practices in Olive Groves: Linking Landscape Pattern, Management Practices, and Species Interactions. Ph.D. Thesis, University of Coimbra, Coimbra, Portugal, 2019.
4. Zolnerowich, G.; Horner, N.V. Gnaphosid spiders of north-central Texas (Araneae, Gnaphosidae). *J. Arachnol.* **1985**, *13*, 79–85.
5. IPMA. *Área educativa – Clima de Portugal Continental*. 2020. Available online: <https://www.ipma.pt/pt/educativa/tempo.clima/> (accessed on 3 November 2020).
6. R Core Team. *R: A Language and Environment for Statistical Computing*; R Foundation for Statistical Computing: Vienna, Austria, 2020.
7. Damos, P.; Savopoulou-Soultani, M. Temperature-Driven Models for Insect Development and Vital Thermal Requirements. *Psyche* **2012**, *123405*. doi:10.1155/2012/123405
8. Pike, D.A.; Webb, J.K.; Shine, R. Hot mothers, cool eggs: nest-site selection by egg-guarding spiders accommodates conflicting thermal optima. *Funct. Ecol.* **2012**, *26*, 469–475. doi:10.1111/j.1365-2435.2011.01946.x
9. APA - Agência Portuguesa do Ambiente, I.P. *Avaliação preliminar dos riscos de inundações, Região Hidrográfica do Douro - RH3*. 2018. Available online: http://apambiente.pt/zdata/Politicass/Agua/PlaneamentoGestao/PGRI/2022-2027/APRI_ParticipacaoPublica/1_Fase/RH3_AVALIACAO_PRELIMINAR_DE_RISCO_DE_INUNDACAO.pdf.
10. ProCiv. *Avaliação nacional de Risco*. 2019. Available online: <http://www.proxiv.pt/bk/RISCOSPREV/AVALIACAONACIONALRISCO/PublishingImages/Paginas/default/ANR2019-vers%C3%A3ofinal.pdf>.

Publisher's Note: MDPI stays neutral with regard to jurisdictional claims in published maps and institutional affiliations.



© 2020 by the authors. Submitted for possible open access publication under the terms and conditions of the Creative Commons Attribution (CC BY) license (<http://creativecommons.org/licenses/by/4.0/>).